



*Final*

# FAST FACTS ABOUT OCC STUDENTS, FALL 2006 ORCHARD RIDGE CAMPUS

COLLEGE-WIDE HEADCOUNT	24,123
ORCHARD RIDGE CAMPUS HEADCOUNT	7,841

## DEMOGRAPHICS

AGE	
Average Age	26.30
Median Age	22
Modal Age	19
Age Range	15 to 90

GENDER		
	#	%
Female	4,425	56%
Male	3,106	40%
Unreported	310	4%

FULL AND PART-TIME STUDENTS		
	#	%
Part-Time	4,842	62%
Full-Time	2,999	38%

*Full-Time students are registered for 12 or more credit hours.*

RACE / ETHNICITY		
	#	%
White	4,647	59%
African American	1,009	13%
Unknown or Unreported	823	11%
Asian	196	3%
Hispanic	129	2%
Native American	42	1%
Non-Resident Alien	995	13%

*\*Percents do not add up to 100%, due to rounding.*

CITIES WHERE MORE THAN 300 OCC STUDENTS RESIDE		
	#	%
Farmington Hills	1,297	17%
West Bloomfield	710	9%
Southfield	632	8%
Novi	542	7%

## FAST FACTS ABOUT OCC STUDENTS, FALL 2006 ORCHARD RIDGE CAMPUS

### COURSE OF STUDY

TOP CREDIT PROGRAMS (OVER 200 ENROLLED)		
	#	%
Business Administration (BUS.ABA)	602	8%
Liberal Arts (ALA.ALA)	549	7%
Nursing (NUR.AASX and NUR.APP)	459	6%
General Studies (GEN.AGS)	436	6%
Undecided Students (UND.NON)	2,422	31%
Non-Degree Students (NDS.NON)	207	3%
Guest Students (GUE)	192	2%

STUDENT EDUCATIONAL GOAL AT TIME OF REGISTRATION		
	#	%
To obtain an OCC degree or certificate	2,073	26%
To transfer to another institution <i>without</i> obtaining an OCC degree or certificate	1,973	25%
To transfer to another institution <i>after</i> obtaining an OCC degree or certificate	1,866	24%
To gain knowledge <i>related</i> to employment	297	4%
To gain knowledge <i>unrelated</i> to employment	175	2%
Undecided	1,228	16%
Unknown or Unreported	229	3%

### BY CAMPUS

#### UNDUPLICATED HEADCOUNT AND CREDIT HOURS

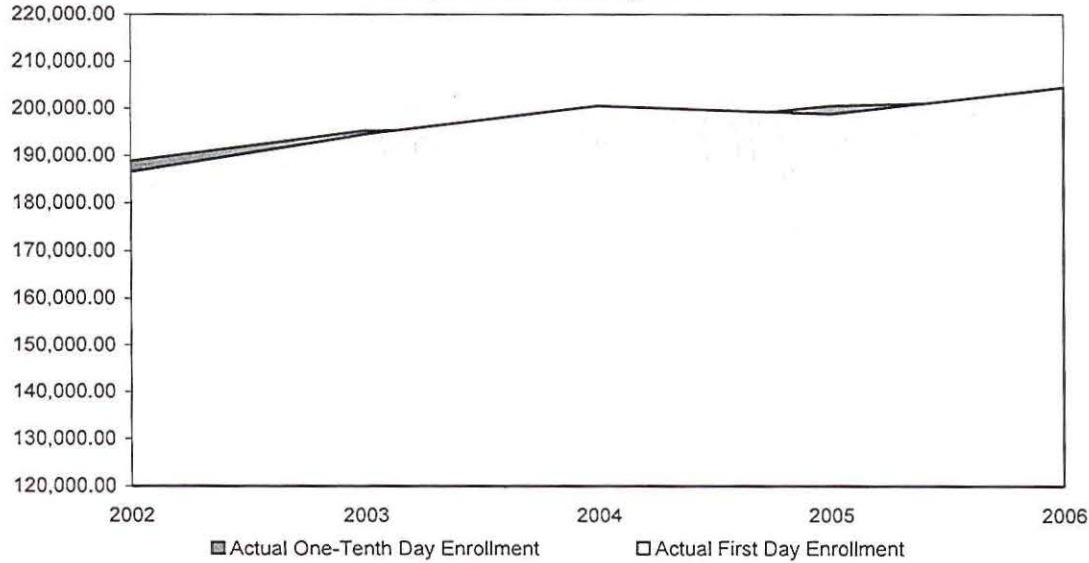
*Note: Total unduplicated headcount includes all students college-wide registered and taking at least one course at Oakland Community College. Students may attend courses at more than one campus. Therefore students' headcount is counted in each location. As a result, campus unduplicated headcounts will not add up to college-wide unduplicated headcount.*

	Headcount	FTE	Credit Hours	Average Credit Load
College-Wide	24,123	13,454	201,808.5	8.37
Orchard Ridge	7,841	3,534	53,010.0	6.76

**Oakland Community College**  
**Official Enrollment Report - Student Credit Hours**  
**Fall 2006 - One-Tenth Day**  
**College-Wide**

	2002	2003	2004	2005	2006	1-Year % Change	5-Year % Change
Actual First Day Enrollment	186,569.00	194,488.50	200,467.00	198,698.00	204,425.50	2.9%	9.6%
Actual One-Tenth Day Enrollment	188,882.00	195,253.00	195,633.50	200,503.00	201,808.50	0.7%	6.8%
% of Actual First Day Enrollment	101.2%	100.4%	97.6%	100.9%	98.7%		

**Actual One-Tenth Day Enrollment  
 Compared to First Day Enrollment**



**Summary**

In comparison with the One-Tenth Day of Session, Fall 2005, actual credit hours have increased by 0.7%.

The five-year percentage change for actual student credit hours is showing an increase of 6.8%.

Student Credit Hours, as of the One-Tenth Day of Session, Fall 2006, are 98.7% of the First Day of Session, Fall 2006.

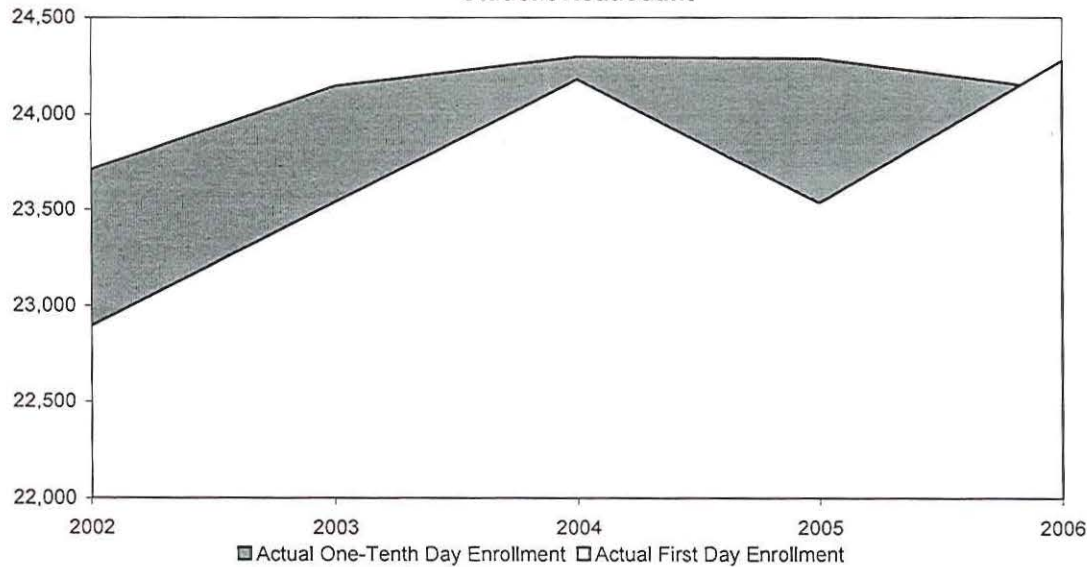
NOTE: The actual student credit hours are based on credit courses only.

*✓ ap - 1/9/07*

**Oakland Community College**  
**Official Enrollment Report - Student Headcount**  
**Fall 2006 - One-Tenth Day**  
**College-Wide**

	2002	2003	2004	2005	2006	1-Year % Change	5-Year % Change
Actual First Day Enrollment	22,895	23,539	24,179	23,534	24,277	3.2%	6.0%
Actual One-Tenth Day Enrollment	23,713	24,145	24,296	24,287	24,123 ✓	-0.7%	1.7%
% of Actual First Day Enrollment	103.6%	102.6%	100.5%	103.2%	99.4%		

**Actual One-Tenth Day of Session  
Student Headcount**



**Summary**

The One-Tenth Day of Session student headcount decreased 0.7% from Fall 2005 to Fall 2006.

The five-year percentage change shows a 1.7% increase in actual student headcount.

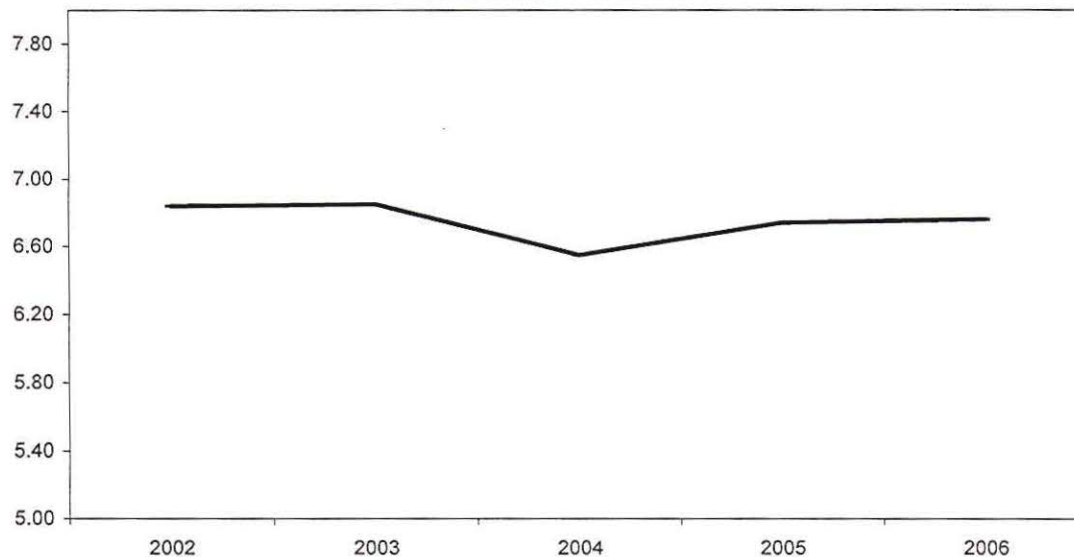
Student headcount, as of the One-Tenth Day of Session, Fall 2006, is at 99.4% of First Day of Session, Fall 2006.

NOTE: Summation of campus headcounts do not equal college totals due to attendance at more than one campus.

Oakland Community College  
 Official Enrollment Report - Credit Hours Per Student  
 Fall 2006 - One-Tenth Day  
 Orchard Ridge

	2002	2003	2004	2005	2006	1-Year % Change	5-Year % Change
Actual One-Tenth Day Credit Hours	51,502.00	52,035.00	50,796.00	52,965.00	53,010.00	0.1%	2.9%
Actual One-Tenth Day Headcount	7,535.00	7,598.00	7,756.00	7,855.00	7,841.00	-0.2%	4.1%
Credit Hours Per Student /OTD	6.84	6.85	6.55	6.74	6.76	0.3%	-1.2%

Credit Hours Per Student Ratio



**Summary**

For the One-Tenth Day of Session, Fall 2006, students at Orchard Ridge enrolled in an average of 6.76 credits. This represents a 0.3% increase in credit hours per student from Fall 2005.

The five-year percentage change for credit hours per student shows a decrease of 1.2%.

NOTE: Summation of campus headcounts do not equal college totals due to attendance at more than one campus. The actual student credit hours are based on credit courses only.

# Frequencies

[DataSet1] I:\Internal Reporting\Enrollment\Fall Enrollment Profile (for Fast Facts)\Fall 2006\Campus\_2006 OTD\Demo065T\_status1\_ORonly.sav

## Statistics

age06

N	Valid	7812
	Missing	29

age06

		Frequency	Percent	Valid Percent	Cumulative Percent
Valid	10.00	2	.0	.0	.0
	13.00	1	.0	.0	.0
	15.00	2	.0	.0	.1
	16.00	16	.2	.2	.3
	17.00	92	1.2	1.2	1.4
	18.00	803	10.2	10.3	11.7
	19.00	989	12.6	12.7	24.4
	20.00	863	11.0	11.0	35.4
	21.00	692	8.8	8.9	44.3
	22.00	515	6.6	6.6	50.9
	23.00	425	5.4	5.4	56.3
	24.00	334	4.3	4.3	60.6
	25.00	280	3.6	3.6	64.2
	26.00	266	3.4	3.4	67.6
	27.00	202	2.6	2.6	70.2
	28.00	209	2.7	2.7	72.8
	29.00	168	2.1	2.2	75.0
	30.00	110	1.4	1.4	76.4
	31.00	135	1.7	1.7	78.1
	32.00	122	1.6	1.6	79.7
	33.00	102	1.3	1.3	81.0
	34.00	94	1.2	1.2	82.2
	35.00	119	1.5	1.5	83.7
	36.00	107	1.4	1.4	85.1
	37.00	96	1.2	1.2	86.3
	38.00	72	.9	.9	87.3
	39.00	72	.9	.9	88.2
	40.00	56	.7	.7	88.9
	41.00	71	.9	.9	89.8
	42.00	77	1.0	1.0	90.8
	43.00	78	1.0	1.0	91.8
	44.00	62	.8	.8	92.6
	45.00	78	1.0	1.0	93.6
	46.00	46	.6	.6	94.2
	47.00	63	.8	.8	95.0
	48.00	44	.6	.6	95.5
	49.00	34	.4	.4	96.0
	50.00	48	.6	.6	96.6
	51.00	34	.4	.4	97.0
	52.00	30	.4	.4	97.4

v ap - 1/9/07

age06

		Frequency	Percent	Valid Percent	Cumulative Percent
Valid	53.00	28	.4	.4	97.8
	54.00	27	.3	.3	98.1
	55.00	20	.3	.3	98.4
	56.00	19	.2	.2	98.6
	57.00	23	.3	.3	98.9
	58.00	11	.1	.1	99.0
	59.00	11	.1	.1	99.2
	60.00	11	.1	.1	99.3
	61.00	9	.1	.1	99.4
	62.00	7	.1	.1	99.5
	63.00	8	.1	.1	99.6
	64.00	5	.1	.1	99.7
	65.00	3	.0	.0	99.7
	66.00	1	.0	.0	99.7
	67.00	4	.1	.1	99.8
	68.00	2	.0	.0	99.8
	69.00	2	.0	.0	99.8
	70.00	2	.0	.0	99.9
	71.00	1	.0	.0	99.9
	72.00	2	.0	.0	99.9
	74.00	3	.0	.0	99.9
	79.00	1	.0	.0	100.0
	100.00	3	.0	.0	100.0
	Total	7812	99.6	100.0	
Missing	System	29	.4		
Total		7841	100.0		

```
USE ALL.
COMPUTE filter_$=(age06 >= 15 & age06 <= 90).
VARIABLE LABEL filter_$ 'age06 >= 15 & age06 <= 90 (FILTER)'.
VALUE LABELS filter_$ 0 'Not Selected' 1 'Selected'.
FORMAT filter_$ (f1.0).
FILTER BY filter_$.
EXECUTE .
```

```
FREQUENCIES
  VARIABLES=age06
  /STATISTICS=MEAN MEDIAN MODE
  /ORDER= ANALYSIS .
```

### Frequencies

[DataSet1] I:\Internal Reporting\Enrollment\Fall Enrollment Profile (for Fast Facts)\Fall 2006\Campus\_2006 OTD\Demo065T\_status1\_ORonly.sav

#### Statistics

age06

N	Valid	7806
	Missing	0
Mean		26.3031 ✓
Median		22.0000 ✓
Mode		19.00 ✓

## age06

	Frequency	Percent	Valid Percent	Cumulative Percent
Valid 15.00	2	.0	.0	.0
16.00	16	.2	.2	.2
17.00	92	1.2	1.2	1.4
18.00	803	10.3	10.3	11.7
19.00	989	12.7	12.7	24.4
20.00	863	11.1	11.1	35.4
21.00	692	8.9	8.9	44.3
22.00	515	6.6	6.6	50.9
23.00	425	5.4	5.4	56.3
24.00	334	4.3	4.3	60.6
25.00	280	3.6	3.6	64.2
26.00	266	3.4	3.4	67.6
27.00	202	2.6	2.6	70.2
28.00	209	2.7	2.7	72.9
29.00	168	2.2	2.2	75.0
30.00	110	1.4	1.4	76.4
31.00	135	1.7	1.7	78.2
32.00	122	1.6	1.6	79.7
33.00	102	1.3	1.3	81.0
34.00	94	1.2	1.2	82.2
35.00	119	1.5	1.5	83.8
36.00	107	1.4	1.4	85.1
37.00	96	1.2	1.2	86.4
38.00	72	.9	.9	87.3
39.00	72	.9	.9	88.2
40.00	56	.7	.7	88.9
41.00	71	.9	.9	89.8
42.00	77	1.0	1.0	90.8
43.00	78	1.0	1.0	91.8
44.00	62	.8	.8	92.6
45.00	78	1.0	1.0	93.6
46.00	46	.6	.6	94.2
47.00	63	.8	.8	95.0
48.00	44	.6	.6	95.6
49.00	34	.4	.4	96.0
50.00	48	.6	.6	96.6
51.00	34	.4	.4	97.1
52.00	30	.4	.4	97.4
53.00	28	.4	.4	97.8
54.00	27	.3	.3	98.1
55.00	20	.3	.3	98.4
56.00	19	.2	.2	98.6
57.00	23	.3	.3	98.9
58.00	11	.1	.1	99.1
59.00	11	.1	.1	99.2
60.00	11	.1	.1	99.4
61.00	9	.1	.1	99.5
62.00	7	.1	.1	99.6
63.00	8	.1	.1	99.7
64.00	5	.1	.1	99.7
65.00	3	.0	.0	99.8



age06

	Frequency	Percent	Valid Percent	Cumulative Percent
Valid 66.00	1	.0	.0	99.8
67.00	4	.1	.1	99.8
68.00	2	.0	.0	99.9
69.00	2	.0	.0	99.9
70.00	2	.0	.0	99.9
71.00	1	.0	.0	99.9
72.00	2	.0	.0	99.9
74.00	3	.0	.0	100.0
79.00	1	.0	.0	100.0
Total	7806	100.0	100.0	

\*FOR ALL THE REST:

\*SORTED ALPHABETICAL

FILTER OFF.

USE ALL.

FREQUENCIES

VARIABLES=gender city repace credits crprog intent  
/ORDER= ANALYSIS .

## Frequencies

[DataSet1] I:\Internal Reporting\Enrollment\Fall Enrollment Profile (for Fast Facts)\Fall 2006\Campus\_2006 OTD\Demo065T\_status1\_ORonly.sav

### Statistics

	Gender	City	Reported Race/Ethnicity	Credits Registered This Term	Credit Program	Educational Goal
N Valid	7841	7841	7841	7841	7841	7841
Missing	0	0	0	0	0	0

## Frequency Table

### Gender

	Frequency	Percent	Valid Percent	Cumulative Percent
Valid	310	4.0	4.0	4.0
F	4425	56.4	56.4	60.4
M	3106	39.6	39.6	100.0
Total	7841	100.0	100.0	

### City

	Frequency	Percent	Valid Percent	Cumulative Percent
Valid Addison Township	1	.0	.0	.0
Allen Park	2	.0	.0	.0
Almont	2	.0	.0	.1

City

	Frequency	Percent	Valid Percent	Cumulative Percent
Valid Ann Arbor	11	.1	.1	.2
Auburn Hills	41	.5	.5	.7
Auburnhills	1	.0	.0	.7
Belleville	2	.0	.0	.8
Belmont	1	.0	.0	.8
Berkely	1	.0	.0	.8
Berkley	61	.8	.8	1.6
Beverly Hills	1	.0	.0	1.6
Beverly Hills	44	.6	.6	2.1
Beverly Hills,	1	.0	.0	2.2
Beverly Hills, Mi	1	.0	.0	2.2
Bingham Farms	8	.1	.1	2.3
Birmingham	45	.6	.6	2.8
Bloomfield	54	.7	.7	3.5
Bloomfield Hill	1	.0	.0	3.5
Bloomfield Hills	1	.0	.0	3.6
Bloomfield Hills	149	1.9	1.9	5.5
Bloomfield Hls	5	.1	.1	5.5
Bloomfield Township	1	.0	.0	5.5
Bloomfield Twp	2	.0	.0	5.6
Bloomfield Village	3	.0	.0	5.6
Brighton	70	.9	.9	6.5
Brown City	1	.0	.0	6.5
Brownstown Twp.	1	.0	.0	6.5
Brownstown,	1	.0	.0	6.5
Byron Center	1	.0	.0	6.5
Canton	31	.4	.4	6.9
Cass City	1	.0	.0	7.0
Center Line	1	.0	.0	7.0
Centerline	1	.0	.0	7.0
Chesterfield	2	.0	.0	7.0
Clarkston	76	1.0	1.0	8.0
Clawson	47	.6	.6	8.6
Clinton Township	1	.0	.0	8.6
Clinton Twp	8	.1	.1	8.7
Cmmrce Township	1	.0	.0	8.7
Columbiaville	1	.0	.0	8.7
Commerce	131	1.7	1.7	10.4
Commerce Township	8	.1	.1	10.5
Commerce Twp	82	1.0	1.0	11.5
Commerce Twp.	8	.1	.1	11.6
Commerce Twsp	2	.0	.0	11.7
Comstock Park	1	.0	.0	11.7
Davisburg	16	.2	.2	11.9
Dearborn	14	.2	.2	12.1
Dearborn Heghts	1	.0	.0	12.1
Dearborn Heights	6	.1	.1	12.1
Dearborn Hgts	5	.1	.1	12.2
Det	1	.0	.0	12.2
Detroit	1	.0	.0	12.2
Detroit	196	2.5	2.5	14.7

156

198

City

	Frequency	Percent	Valid Percent	Cumulative Percent
Valid Dexter	1	.0	.0	14.7
Dryden	3	.0	.0	14.8
East Lansing	1	.0	.0	14.8
East Northport	2	.0	.0	14.8
East Pointe	1	.0	.0	14.8
Ecorse	1	.0	.0	14.8
Farmingotn Hills	1	.0	.0	14.9
Farmingtn Hls	4	.1	.1	14.9
Farmington	89	1.1	1.1	16.0
Farmington Hill	6	.1	.1	16.1
Farmington Hills	1021	13.0	13.0	29.1
Farmington HI	78	1.0	1.0	30.1
Farmington Hlls	2	.0	.0	30.2
Farmington Hls	38	.5	.5	30.6
Farmingtonhills	2	.0	.0	30.7
Farmin ton Hills	1	.0	.0	30.7
Fenton	11	.1	.1	30.8
Ferndale	108	1.4	1.4	32.2
Flint	7	.1	.1	32.3
Flushing	1	.0	.0	32.3
Fowlerville	4	.1	.1	32.4
Franklin	24	.3	.3	32.7
Fraser	1	.0	.0	32.7
Frmington Hills	144	1.8	1.8	34.5
Gaines	1	.0	.0	34.5
Garden City	12	.2	.2	34.7
Gladstone	1	.0	.0	34.7
Goodelle	1	.0	.0	34.7
Goodrich	1	.0	.0	34.7
Grand Blanc	1	.0	.0	34.7
Grosse Pointe	2	.0	.0	34.8
Grosse Pointe Farms	1	.0	.0	34.8
Grosse Pointe Park	2	.0	.0	34.8
Grosse Pointe Woods	1	.0	.0	34.8
Grosse Pte Farms	1	.0	.0	34.8
Hamilton	1	.0	.0	34.8
Hamtrack	1	.0	.0	34.8
Hamtramck	13	.2	.2	35.0
Harper Woods	2	.0	.0	35.0
Hartland	11	.1	.1	35.2
Hatramck	1	.0	.0	35.2
Hazel Park	68	.9	.9	36.1
Highland	108	1.4	1.4	37.4
Highland Park	3	.0	.0	37.5
Highland Twp	2	.0	.0	37.5
Holly	25	.3	.3	37.8
Homer	1	.0	.0	37.8
Howell	26	.3	.3	38.2
Huntingtn Woods	1	.0	.0	38.2
Huntington Wd	4	.1	.1	38.2
Huntington Woods	16	.2	.2	38.4

1297 ✓

City

	Frequency	Percent	Valid Percent	Cumulative Percent
Valid Inkster	4	.1	.1	38.5
Keego Harbor	26	.3	.3	38.8
Keegp Harbor	1	.0	.0	38.8
Lake Angelus	1	.0	.0	38.8
Lake Orion	42	.5	.5	39.4
Lakeorion	1	.0	.0	39.4
Lapeer	1	.0	.0	39.4
Lasalle	1	.0	.0	39.4
Lathrup Village	19	.2	.2	39.7
Lenox	1	.0	.0	39.7
Leonard	5	.1	.1	39.7
Linden	3	.0	.0	39.8
Livonia	100	1.3	1.3	41.0
Louisville	1	.0	.0	41.1
Macomb	4	.1	.1	41.1
Macomb Twp	1	.0	.0	41.1
Madion Heights	1	.0	.0	41.1
Madison Hegihts	1	.0	.0	41.1
Madison Heights	52	.7	.7	41.8
Madison Hgt	1	.0	.0	41.8
Madison Hgts	60	.8	.8	42.6
Madison Hts	11	.1	.1	42.7
Madison Hts.	1	.0	.0	42.7
Metamora	3	.0	.0	42.8
Midland	1	.0	.0	42.8
Milford	203	2.6	2.6	45.4
Mt Morris	1	.0	.0	45.4
New Haven	1	.0	.0	45.4
New Hudson	89	1.1	1.1	46.5
North Branch	1	.0	.0	46.6
Northville	68	.9	.9	47.4
Novi	415	5.3	5.3	52.7
Novi,	127	1.6	1.6	54.3
Oak Park	151	1.9	1.9	56.3
Oakland	4	.1	.1	56.3
Oakland Twp	1	.0	.0	56.3
Oakpark	1	.0	.0	56.3
Orchard Lake	29	.4	.4	56.7
Orchard Lk	1	.0	.0	56.7
Orion	15	.2	.2	56.9
Ortonville	13	.2	.2	57.1
Oscoda	1	.0	.0	57.1
Oxford	35	.4	.4	57.5
Petersburg	1	.0	.0	57.5
Pinckney	5	.1	.1	57.6
Pleasant Ridge	4	.1	.1	57.7
Plymouth	18	.2	.2	57.9
Pontiac	62	.8	.8	58.7
Redford	53	.7	.7	59.4
Redford Twp	25	.3	.3	59.7
Rochester	13	.2	.2	59.8

547

City

	Frequency	Percent	Valid Percent	Cumulative Percent
Valid Rochester Hills	100	1.3	1.3	61.1
Rochester Hls	11	.1	.1	61.3
Roseville	4	.1	.1	61.3
Royal Oak	233	3.0	3.0	64.3
Saint Clair Shores	1	.0	.0	64.3
Salem	1	.0	.0	64.3
Saline	3	.0	.0	64.3
San Francisco	1	.0	.0	64.4
Shelby Township	6	.1	.1	64.4
Shelby Twp	4	.1	.1	64.5
Shreveport	1	.0	.0	64.5
South Field	1	.0	.0	64.5
South Lyon	179	2.3	2.3	66.8
Southfield	632	8.1	8.1	74.9
Southgate	1	.0	.0	74.9
St Clair Shores	3	.0	.0	74.9
St. Clair Shores	2	.0	.0	74.9
Sterling Heights	18	.2	.2	75.2
Sterling Hghts	1	.0	.0	75.2
Sterling Hts	2	.0	.0	75.2
Sylvan Lake	7	.1	.1	75.3
Taylor	7	.1	.1	75.4
Toronto Ontario Cana	1	.0	.0	75.4
Trenton	1	.0	.0	75.4
Troy	193	2.5	2.5	77.9
Union Lake	3	.0	.0	77.9
Utica	1	.0	.0	77.9
W Bloomfield	14	.2	.2	78.1
W. Bloomfield	2	.0	.0	78.1
Walled Alek	1	.0	.0	78.1
Walled Lake	110	1.4	1.4	79.5
Walled Lk	90	1.1	1.1	80.7
Warren	31	.4	.4	81.1
Washington	1	.0	.0	81.1
Waterford	273	3.5	3.5	84.6
Wayne	2	.0	.0	84.6
Webberville	1	.0	.0	84.6
West Bloomfield	2	.0	.0	84.6
West Bloomfied	1	.0	.0	84.6
West Bloomfield	684	8.7	8.7	93.4
West Bloomfield Hill	1	.0	.0	93.4
West Bloomfld	2	.0	.0	93.4
West Branch	1	.0	.0	93.4
Westbloom Field	1	.0	.0	93.4
Westbloomfield	3	.0	.0	93.5
Westland	37	.5	.5	93.9
White	1	.0	.0	94.0
White Lake	145	1.8	1.8	95.8
White Lk	2	.0	.0	95.8
Whitmore Lake	4	.1	.1	95.9
Williamston	1	.0	.0	95.9

709

710

City

	Frequency	Percent	Valid Percent	Cumulative Percent
Valid Willmar	1	.0	.0	95.9
Winchester	1	.0	.0	95.9
Windsor	3	.0	.0	96.0
Windsor H8 R1 H2	1	.0	.0	96.0
Wixom	298	3.8	3.8	99.8
Wolverine	1	.0	.0	99.8
Wolverine Lake	11	.1	.1	99.9
Wolverine Lk	1	.0	.0	99.9
Woodhaven	1	.0	.0	99.9
Ypsilanti	4	.1	.1	100.0
Total	7841	100.0	100.0	

Reported Race/Ethnicity

	Frequency	Percent	Valid Percent	Cumulative Percent
Valid	428	5.5	5.5	5.5
African American	1009	12.9	12.9	18.3
Asian	196	2.5	2.5	20.8
Hispanic	129	1.6	1.6	22.5
Native American	42	.5	.5	23.0
Non Resident Alien	995	12.7	12.7	35.7
Race Unknown	395	5.0	5.0	40.7
White	4647	59.3	59.3	100.0
Total	7841	100.0	100.0	

$$\frac{428}{7841} = .0547$$

$$\frac{395}{7841} = .0504$$

$$\frac{823}{7841} = .10496$$

Credits Registered This Term

	Frequency	Percent	Valid Percent	Cumulative Percent
Valid 1.00	62	.8	.8	.8
2.00	125	1.6	1.6	2.4
3.00	655	8.4	8.4	10.7
4.00	971	12.4	12.4	23.1
5.00	130	1.7	1.7	24.8
6.00	623	7.9	7.9	32.7
7.00	684	8.7	8.7	41.4
8.00	472	6.0	6.0	47.5
9.00	355	4.5	4.5	52.0
10.00	450	5.7	5.7	57.7
11.00	315	4.0	4.0	61.8
12.00	1271	16.2	16.2	78.0
13.00	832	10.6	10.6	88.6
14.00	487	6.2	6.2	94.8
15.00	206	2.6	2.6	97.4
16.00	115	1.5	1.5	98.9
17.00	75	1.0	1.0	99.8
18.00	9	.1	.1	99.9
19.00	2	.0	.0	100.0
20.00	2	.0	.0	100.0
Total	7841	100.0	100.0	

*part-time*  

$$\frac{4842}{7841} = .61752$$
  

$$\frac{2999}{7841} = .38247$$
  
*Full-time*

**Credit Program**

	Frequency	Percent	Valid Percent	Cumulative Percent
Valid ACC.AAS	139	1.8	1.8	1.8
ACC.ABA	13	.2	.2	1.9
ACC.CT	6	.1	.1	2.0
ACH.AAS	12	.2	.2	2.2
ACH.AASX	44	.6	.6	2.7
ALA.ALA	549	7.0	7.0	9.7
ASC.ASC	127	1.6	1.6	11.4
AUS.AAS	13	.2	.2	11.5
AUS.CT	2	.0	.0	11.5
AVM.AAS	1	.0	.0	11.6
BAT.ALA	2	.0	.0	11.6
BIS.AAS	26	.3	.3	11.9
BIS.CT	2	.0	.0	11.9
BUS.ABA	602	7.7	7.7	19.6
CAD.AAS	1	.0	.0	19.6
CAD.AIM.AASX	4	.1	.1	19.7
CAD.CAE.AAS	17	.2	.2	19.9
CAD.CAE.CT	1	.0	.0	19.9
CAD.MTO.AASX	4	.1	.1	20.0
CAD.VDO.AASX	17	.2	.2	20.2
CAR.PRT.CT	2	.0	.0	20.2
CCR.AAS	2	.0	.0	20.2
CCT.AAS	1	.0	.0	20.2
CDA.CT	1	.0	.0	20.3
CER.AAS	13	.2	.2	20.4
CER.CT	1	.0	.0	20.4
CHT.AAS	20	.3	.3	20.7
CHT.CT	2	.0	.0	20.7
CIM.NUC.AAS	1	.0	.0	20.7
CIS.AAS	32	.4	.4	21.1
CIS.CPA.AAS	34	.4	.4	21.6
CIS.CPC.CT	13	.2	.2	21.7
CIS.CSU.AAS	32	.4	.4	22.1
CIS.CSU.CT	4	.1	.1	22.2
CIS.CTS.AAS	34	.4	.4	22.6
CIS.CTS.CT	6	.1	.1	22.7
CIS.CUC.CT	3	.0	.0	22.7
CIS.CYS.CT	3	.0	.0	22.8
CIS.DBA.CA	1	.0	.0	22.8
CIS.MMC.CT	12	.2	.2	22.9
CIS.NWS.CT	12	.2	.2	23.1
CIS.OSE.CA	1	.0	.0	23.1
CIS.SWE.AAS	24	.3	.3	23.4
CIS.SWE.CT	7	.1	.1	23.5
CIS.SYA.AAS	9	.1	.1	23.6
CIS.SYA.CT	4	.1	.1	23.7
CIS.THS.AAS	4	.1	.1	23.7
CIS.THS.CT	2	.0	.0	23.7
CIS.WDC.CT	8	.1	.1	23.8
CIS.WSE.CA	1	.0	.0	23.9

**Credit Program**

	Frequency	Percent	Valid Percent	Cumulative Percent
Valid CNT.AAS	4	.1	.1	23.9
COS.MGT.AAS	11	.1	.1	24.1
COS.STY.AAS	3	.0	.0	24.1
CRJ.CRO.AAS	5	.1	.1	24.2
CRJ.CRO.CT	1	.0	.0	24.2
CRJ.GEN.AAS	5	.1	.1	24.2
CRJ.LAW.AAS	59	.8	.8	25.0
CRJ.LAW.CT	2	.0	.0	25.0
CRJ.PET.AAS	15	.2	.2	25.2
CRJ.SEC.AAS	2	.0	.0	25.2
CUL.AASX	185	2.4	2.4	27.6
CUL.BPA.CT	30	.4	.4	28.0
CUL.FSM.AAS	1	.0	.0	28.0
CUL.HMM.AAS	17	.2	.2	28.2
CUL.RMP.AAS	2	.0	.0	28.2
CUL.RMP.AASX	8	.1	.1	28.3
DHY.AASX	1	.0	.0	28.3
DHY.APP	90	1.1	1.1	29.5
DMS.AASX	1	.0	.0	29.5
DMS.APP	74	.9	.9	30.4
ECD.AAS	69	.9	.9	31.3
ECD.APP	6	.1	.1	31.4
EDU.ALA	65	.8	.8	32.2
EGR.ASC	1	.0	.0	32.2
EGR.EPT.AASX	1	.0	.0	32.3
EGR.PRE.ASC	125	1.6	1.6	33.8
ELE.AAS	13	.2	.2	34.0
EMS.AASX	2	.0	.0	34.0
EMS.APP	4	.1	.1	34.1
EMS.FFP.AASX	5	.1	.1	34.2
EMS.PAR.CT	1	.0	.0	34.2
EMT.AASX	2	.0	.0	34.2
EMT.APP	2	.0	.0	34.2
ENV.FAC.AAS	1	.0	.0	34.2
ENV.HVA.AASX	3	.0	.0	34.3
ENV.HVC.CT	1	.0	.0	34.3
ENV.HVT.AASX	3	.0	.0	34.3
ENV.SPI.AAS	1	.0	.0	34.3
EST.AAS	4	.1	.1	34.4
ETT.AAS	5	.1	.1	34.4
ETT.CT	2	.0	.0	34.5
EXS.AAS	13	.2	.2	34.6
EXS.BUS.AASX	3	.0	.0	34.7
EXS.BUS.CT	1	.0	.0	34.7
EXS.CT	3	.0	.0	34.7
FAV.ALA	92	1.2	1.2	35.9
FFT.AAS	14	.2	.2	36.1
GEN.AGS	436	5.6	5.6	41.6
GRA.ILL.AAS	3	.0	.0	41.7
GRD.AAS	93	1.2	1.2	42.9
GRN.AAS	2	.0	.0	42.9



Credit Program

	Frequency	Percent	Valid Percent	Cumulative Percent
Valid GRN.CT	1	.0	.0	42.9
GUE	192	2.4	2.4	45.4
HCA.AAS	11	.1	.1	45.5
HCA.CT	1	.0	.0	45.5
HPT.AAS	4	.1	.1	45.6
HPT.APP	29	.4	.4	45.9
HSD	106	1.4	1.4	47.3
HSG	133	1.7	1.7	49.0
ICM.PRE.ALA	11	.1	.1	49.1
IND.AAS	2	.0	.0	49.1
IND.MAR.CT	1	.0	.0	49.2
IND.MIL.CT	1	.0	.0	49.2
INT.AAS	109	1.4	1.4	50.6
LAD.AAS	5	.1	.1	50.6
LBT.AAS	1	.0	.0	50.6
LEG.AAS	1	.0	.0	50.6
LGL.AAS	5	.1	.1	50.7
LGL.APP	1	.0	.0	50.7
LSH.AAS	6	.1	.1	50.8
LTN.AAS	1	.0	.0	50.8
MDA.AAS	15	.2	.2	51.0
MDA.AASX	9	.1	.1	51.1
MDA.CT	6	.1	.1	51.2
MDA.MIC.CA	4	.1	.1	51.2
MDA.MOA.CA	1	.0	.0	51.3
MDA.PHT.CA	1	.0	.0	51.3
MET.AAS	9	.1	.1	51.4
MET.CT	3	.0	.0	51.4
MGT.AOM.AAS	6	.1	.1	51.5
MGT.BUS.AAS	45	.6	.6	52.1
MGT.CCM.CT	1	.0	.0	52.1
MGT.CON.AAS	26	.3	.3	52.4
MGT.ENO.AAS	7	.1	.1	52.5
MGT.RFB.AAS	1	.0	.0	52.5
MGT.SBO.AAS	1	.0	.0	52.5
MHS.APP	40	.5	.5	53.0
MSM.MME.AAS	2	.0	.0	53.1
MSM.MMP.AAS	1	.0	.0	53.1
MSM.MMR.AAS	2	.0	.0	53.1
MST.AAS	2	.0	.0	53.1
MST.APP	18	.2	.2	53.4
MTT.CNC.AAS	1	.0	.0	53.4
MUS.CMT.ALA	13	.2	.2	53.5
MUS.CT	8	.1	.1	53.6
MUS.PIN.ALA	8	.1	.1	53.7
MUS.PVO.ALA	8	.1	.1	53.8
NDS.NON	207	2.6	2.6	56.5
NMT.AAS	11	.1	.1	56.6
NUR.AASX	8	.1	.1	56.7
NUR.APP	451	5.8	5.8	62.5
NUR.MCL.CT	1	.0	.0	62.5

459  
 $\frac{459}{7841} = .058538$

**Credit Program**

	Frequency	Percent	Valid Percent	Cumulative Percent
Valid				
NUR.PNE.APP	44	.6	.6	63.1
NUR.RNE.APP	11	.1	.1	63.2
NUR.TPN.AAS	1	.0	.0	63.2
NUR.TPN.APP	9	.1	.1	63.3
OTA.MCC.REC	4	.1	.1	63.4
PHT.AAS	76	1.0	1.0	64.3
PHT.CT	13	.2	.2	64.5
PLG.AAS	48	.6	.6	65.1
PLG.APP	81	1.0	1.0	66.2
PLG.CT	45	.6	.6	66.7
PTA.MCC.REC	34	.4	.4	67.2
RAL.AASX	1	.0	.0	67.2
RAL.APP	60	.8	.8	67.9
ROB.AUT.AASX	7	.1	.1	68.0
ROB.AUT.CT	2	.0	.0	68.1
RSP.APP	19	.2	.2	68.3
RTT.AAS	8	.1	.1	68.4
SLI.AAS	11	.1	.1	68.5
SUR.AAS	2	.0	.0	68.6
SUR.APP	17	.2	.2	68.8
THE.ALA	13	.2	.2	68.9
UND.NON	2422	30.9	30.9	99.8
VET.MCC.REC	12	.2	.2	100.0
WEL.CT	1	.0	.0	100.0
Total	7841	100.0	100.0	

**Educational Goal**

	Frequency	Percent	Valid Percent	Cumulative Percent
Valid	229	2.9	2.9	2.9
✓ Obtain OCC degree or certificate	2073	26.4	26.4	29.4
✓ Gain knowledge unrelated to employment	175	2.2	2.2	31.6
✓ Employment Related Knowledge	297	3.8	3.8	35.4
✓ Transfer <u>after</u> obtaining degree or certificate	1866	23.8	23.8	59.2
✓ Transfer <u>without</u> obtaining degree or certificate	1973	25.2	25.2	84.3
✓ Undecided	1228	15.7	15.7	100.0
Total	7841	100.0	100.0	

\*SORTED BY DECENDING FREQ (LARGER NUMBERS ON TOP)  
 FILTER OFF.  
 USE ALL.  
 FREQUENCIES  
 VARIABLES=gender city replace credits crprog intent  
 /FORMAT=DFREQ  
 /ORDER= ANALYSIS .

# Frequencies

[DataSet1] I:\Internal Reporting\Enrollment\Fall Enrollment Profile (for Fast Facts)\Fall 2006\Campus\_2006 OTD\Demo065T\_status1\_ORonly.sav

## Statistics

	Gender	City	Reported Race/Ethnicity	Credits Registered This Term	Credit Program	Educational Goal
N Valid	7841	7841	7841	7841	7841	7841
Missing	0	0	0	0	0	0

## Frequency Table

### Gender

	Frequency	Percent	Valid Percent	Cumulative Percent
Valid F	4425	56.4	56.4	56.4
M	3106	39.6	39.6	96.0
	310	4.0	4.0	100.0
Total	7841	100.0	100.0	

### City

	Frequency	Percent	Valid Percent	Cumulative Percent
Valid Farmington Hills	1021	13.0	13.0	13.0
West Bloomfield	684	8.7	8.7	21.7
Southfield	632	8.1	8.1	29.8
Novi	415	5.3	5.3	35.1
Wixom	298	3.8	3.8	38.9
Waterford	273	3.5	3.5	42.4
Royal Oak	233	3.0	3.0	45.4
Milford	203	2.6	2.6	47.9
Detroit	196	2.5	2.5	50.4
Troy	193	2.5	2.5	52.9
South Lyon	179	2.3	2.3	55.2
Oak Park	151	1.9	1.9	57.1
Bloomfield Hills	149	1.9	1.9	59.0
White Lake	145	1.8	1.8	60.9
Frmington Hills	144	1.8	1.8	62.7
Commerce	131	1.7	1.7	64.4
Novi,	127	1.6	1.6	66.0
Walled Lake	110	1.4	1.4	67.4
Ferndale	108	1.4	1.4	68.8
Highland	108	1.4	1.4	70.1
Rochester Hills	100	1.3	1.3	71.4
Livonia	100	1.3	1.3	72.7
Walled Lk	90	1.1	1.1	73.8
Farmington	89	1.1	1.1	75.0
New Hudson	89	1.1	1.1	76.1
Commerce Twp	82	1.0	1.0	77.2

City

	Frequency	Percent	Valid Percent	Cumulative Percent
Valid Farmington Hl	78	1.0	1.0	78.2
Clarkston	76	1.0	1.0	79.1
Brighton	70	.9	.9	80.0
Hazel Park	68	.9	.9	80.9
Northville	68	.9	.9	81.7
Pontiac	62	.8	.8	82.5
Berkley	61	.8	.8	83.3
Madison Hgts	60	.8	.8	84.1
Bloomfield	54	.7	.7	84.8
Redford	53	.7	.7	85.4
Madison Heights	52	.7	.7	86.1
Clawson	47	.6	.6	86.7
Birmingham	45	.6	.6	87.3
Beverly Hills	44	.6	.6	87.8
Lake Orion	42	.5	.5	88.4
Auburn Hills	41	.5	.5	88.9
Farmington Hls	38	.5	.5	89.4
Westland	37	.5	.5	89.9
Oxford	35	.4	.4	90.3
Canton	31	.4	.4	90.7
Warren	31	.4	.4	91.1
Orchard Lake	29	.4	.4	91.5
Keego Harbor	26	.3	.3	91.8
Howell	26	.3	.3	92.1
Redford Twp	25	.3	.3	92.4
Holly	25	.3	.3	92.8
Franklin	24	.3	.3	93.1
Lathrup Village	19	.2	.2	93.3
Sterling Heights	18	.2	.2	93.5
Plymouth	18	.2	.2	93.8
Huntington Woods	16	.2	.2	94.0
Davisburg	16	.2	.2	94.2
Orion	15	.2	.2	94.4
W Bloomfield	14	.2	.2	94.6
Dearborn	14	.2	.2	94.7
Hamtramck	13	.2	.2	94.9
Ortonville	13	.2	.2	95.1
Rochester	13	.2	.2	95.2
Garden City	12	.2	.2	95.4
Wolverine Lake	11	.1	.1	95.5
Rochester Hls	11	.1	.1	95.7
Hartland	11	.1	.1	95.8
Madison Hts	11	.1	.1	95.9
Fenton	11	.1	.1	96.1
Ann Arbor	11	.1	.1	96.2
Commerce Township	8	.1	.1	96.3
Commerce Twp.	8	.1	.1	96.4
Bingham Farms	8	.1	.1	96.5
Clinton Twp	8	.1	.1	96.6
Flint	7	.1	.1	96.7
Taylor	7	.1	.1	96.8

City

	Frequency	Percent	Valid Percent	Cumulative Percent
Valid				
Sylvan Lake	7	.1	.1	96.9
Dearborn Heights	6	.1	.1	97.0
Shelby Township	6	.1	.1	97.1
Farmington Hill	6	.1	.1	97.1
Leonard	5	.1	.1	97.2
Pinckney	5	.1	.1	97.3
Bloomfield Hls	5	.1	.1	97.3
Dearborn Hgts	5	.1	.1	97.4
Inkster	4	.1	.1	97.4
Roseville	4	.1	.1	97.5
Huntington Wd	4	.1	.1	97.5
Macomb	4	.1	.1	97.6
Farmingtn Hls	4	.1	.1	97.6
Pleasant Ridge	4	.1	.1	97.7
Whitmore Lake	4	.1	.1	97.7
Shelby Twp	4	.1	.1	97.8
Ypsilanti	4	.1	.1	97.8
Fowlerville	4	.1	.1	97.9
Oakland	4	.1	.1	97.9
Metamora	3	.0	.0	98.0
Highland Park	3	.0	.0	98.0
Bloomfield Village	3	.0	.0	98.1
St Clair Shores	3	.0	.0	98.1
Saline	3	.0	.0	98.1
Westbloomfield	3	.0	.0	98.2
Union Lake	3	.0	.0	98.2
Windsor	3	.0	.0	98.3
Dryden	3	.0	.0	98.3
Linden	3	.0	.0	98.3
West Bloomfeld	2	.0	.0	98.4
Almont	2	.0	.0	98.4
Farmingtonhills	2	.0	.0	98.4
Highland Twp	2	.0	.0	98.4
Harper Woods	2	.0	.0	98.5
Grosse Pointe Park	2	.0	.0	98.5
Belleville	2	.0	.0	98.5
Bloomfield Twp	2	.0	.0	98.5
Wayne	2	.0	.0	98.6
St. Clair Shores	2	.0	.0	98.6
Sterling Hts	2	.0	.0	98.6
Allen Park	2	.0	.0	98.6
White Lk	2	.0	.0	98.7
East Northport	2	.0	.0	98.7
Grosse Pointe	2	.0	.0	98.7
Farmington Hlls	2	.0	.0	98.7
Commerce Twsp	2	.0	.0	98.8
W. Bloomfield	2	.0	.0	98.8
West Bloomfld	2	.0	.0	98.8
Chesterfield	2	.0	.0	98.8
Homer	1	.0	.0	98.9
Southgate	1	.0	.0	98.9

City

	Frequency	Percent	Valid Percent	Cumulative Percent
Valid Orchard Lk	1	.0	.0	98.9
East Pointe	1	.0	.0	98.9
Lake Angelus	1	.0	.0	98.9
Hatramck	1	.0	.0	98.9
Dexter	1	.0	.0	98.9
Windsor H8 R1 H2	1	.0	.0	98.9
Columbiaville	1	.0	.0	99.0
Cass City	1	.0	.0	99.0
Grosse Pointe Farms	1	.0	.0	99.0
Lapeer	1	.0	.0	99.0
Ecorse	1	.0	.0	99.0
Lake Orion	1	.0	.0	99.0
Oscoda	1	.0	.0	99.0
Willmar	1	.0	.0	99.0
Flushing	1	.0	.0	99.1
Clinton Township	1	.0	.0	99.1
Brown City	1	.0	.0	99.1
Winchester	1	.0	.0	99.1
Addison Twnship	1	.0	.0	99.1
Grand Blanc	1	.0	.0	99.1
Salem	1	.0	.0	99.1
Oakpark	1	.0	.0	99.1
Keegp Harbor	1	.0	.0	99.2
Lasalle	1	.0	.0	99.2
West Bloomfield Hill	1	.0	.0	99.2
Washington	1	.0	.0	99.2
Walled Alek	1	.0	.0	99.2
Fraser	1	.0	.0	99.2
Comstock Park	1	.0	.0	99.2
Centerline	1	.0	.0	99.2
Brownstown Twp.	1	.0	.0	99.3
Saint Clair Shores	1	.0	.0	99.3
Center Line	1	.0	.0	99.3
Huntingtn Woods	1	.0	.0	99.3
Wolverine	1	.0	.0	99.3
East Lansing	1	.0	.0	99.3
Cmmrce Township	1	.0	.0	99.3
Petersburg	1	.0	.0	99.3
Oakland Twp	1	.0	.0	99.4
Bloomfield Hill	1	.0	.0	99.4
Macomb Twp	1	.0	.0	99.4
West Bloomfied	1	.0	.0	99.4
Webberville	1	.0	.0	99.4
Det	1	.0	.0	99.4
Trenton	1	.0	.0	99.4
Lenox	1	.0	.0	99.5
Louisville	1	.0	.0	99.5
Auburnhills	1	.0	.0	99.5
Utica	1	.0	.0	99.5
Wolverine Lk	1	.0	.0	99.5
Byron Center	1	.0	.0	99.5

City

	Frequency	Percent	Valid Percent	Cumulative Percent
Valid Madison Hegihts	1	.0	.0	99.5
Hamilton	1	.0	.0	99.5
Beverly Hills,	1	.0	.0	99.6
North Branch	1	.0	.0	99.6
Goodrich	1	.0	.0	99.6
Madison Hts.	1	.0	.0	99.6
Mt Morris	1	.0	.0	99.6
Grosse Pte Farms	1	.0	.0	99.6
Farminton Hills	1	.0	.0	99.6
Gladstone	1	.0	.0	99.6
Sterling Hghts	1	.0	.0	99.7
Bloomfield Township	1	.0	.0	99.7
Beverly Hills, Mi	1	.0	.0	99.7
South Field	1	.0	.0	99.7
Detroit	1	.0	.0	99.7
Toronto Ontario Cana	1	.0	.0	99.7
Goodelle	1	.0	.0	99.7
Madion Heights	1	.0	.0	99.7
Shreveport	1	.0	.0	99.8
Westbloom Field	1	.0	.0	99.8
Midland	1	.0	.0	99.8
New Haven	1	.0	.0	99.8
Grosse Pointe Woods	1	.0	.0	99.8
Beverly Hills	1	.0	.0	99.8
Farmingotn Hills	1	.0	.0	99.8
Gaines	1	.0	.0	99.8
San Francisco	1	.0	.0	99.9
Hamtrack	1	.0	.0	99.9
West Branch	1	.0	.0	99.9
Dearborn Heghts	1	.0	.0	99.9
Bloomfield Hills	1	.0	.0	99.9
Brownstown,	1	.0	.0	99.9
Williamston	1	.0	.0	99.9
Woodhaven	1	.0	.0	99.9
Belmont	1	.0	.0	100.0
White	1	.0	.0	100.0
Madison Hgt	1	.0	.0	100.0
Berkely	1	.0	.0	100.0
Total	7841	100.0	100.0	

**Reported Race/Ethnicity**

		Frequency	Percent	Valid Percent	Cumulative Percent
Valid	White	4647	59.3	59.3	59.3
	African American	1009	12.9	12.9	72.1
	Non Resident Alien	995	12.7	12.7	84.8
		428	5.5	5.5	90.3
	Race Unknown	395	5.0	5.0	95.3
	Asian	196	2.5	2.5	97.8
	Hispanic	129	1.6	1.6	99.5
	Native American	42	.5	.5	100.0
	Total	7841	100.0	100.0	

**Credits Registered This Term**

		Frequency	Percent	Valid Percent	Cumulative Percent
Valid	12.00	1271	16.2	16.2	16.2
	4.00	971	12.4	12.4	28.6
	13.00	832	10.6	10.6	39.2
	7.00	684	8.7	8.7	47.9
	3.00	655	8.4	8.4	56.3
	6.00	623	7.9	7.9	64.2
	14.00	487	6.2	6.2	70.4
	8.00	472	6.0	6.0	76.5
	10.00	450	5.7	5.7	82.2
	9.00	355	4.5	4.5	86.7
	11.00	315	4.0	4.0	90.7
	15.00	206	2.6	2.6	93.4
	5.00	130	1.7	1.7	95.0
	2.00	125	1.6	1.6	96.6
	16.00	115	1.5	1.5	98.1
	17.00	75	1.0	1.0	99.0
	1.00	62	.8	.8	99.8
	18.00	9	.1	.1	99.9
	20.00	2	.0	.0	100.0
	19.00	2	.0	.0	100.0
	Total	7841	100.0	100.0	

**Credit Program**

		Frequency	Percent	Valid Percent	Cumulative Percent
Valid	UND.NON	2422	30.9	30.9	30.9
	BUS.ABA	602	7.7	7.7	38.6
	ALA.ALA	549	7.0	7.0	45.6
	NUR.APP	451	5.8	5.8	51.3
	GEN.AGS	436	5.6	5.6	56.9
	NDS.NON	207	2.6	2.6	59.5
	GUE	192	2.4	2.4	62.0
	CUL.AASX	185	2.4	2.4	64.3
	ACC.AAS	139	1.8	1.8	66.1
	HSG	133	1.7	1.7	67.8



**Credit Program**

	Frequency	Percent	Valid Percent	Cumulative Percent
Valid ASC.ASC	127	1.6	1.6	69.4
EGR.PRE.ASC	125	1.6	1.6	71.0
INT.AAS	109	1.4	1.4	72.4
HSD	106	1.4	1.4	73.8
GRD.AAS	93	1.2	1.2	74.9
FAV.ALA	92	1.2	1.2	76.1
DHY.APP	90	1.1	1.1	77.3
PLG.APP	81	1.0	1.0	78.3
PHT.AAS	76	1.0	1.0	79.3
DMS.APP	74	.9	.9	80.2
ECD.AAS	69	.9	.9	81.1
EDU.ALA	65	.8	.8	81.9
RAL.APP	60	.8	.8	82.7
CRJ.LAW.AAS	59	.8	.8	83.4
PLG.AAS	48	.6	.6	84.0
MGT.BUS.AAS	45	.6	.6	84.6
PLG.CT	45	.6	.6	85.2
NUR.PNE.APP	44	.6	.6	85.8
ACH.AASX	44	.6	.6	86.3
MHS.APP	40	.5	.5	86.8
PTA.MCC.REC	34	.4	.4	87.3
CIS.CTS.AAS	34	.4	.4	87.7
CIS.CPA.AAS	34	.4	.4	88.1
CIS.AAS	32	.4	.4	88.5
CIS.CSU.AAS	32	.4	.4	88.9
CUL.BPA.CT	30	.4	.4	89.3
HPT.APP	29	.4	.4	89.7
BIS.AAS	26	.3	.3	90.0
MGT.CON.AAS	26	.3	.3	90.4
CIS.SWE.AAS	24	.3	.3	90.7
CHT.AAS	20	.3	.3	90.9
RSP.APP	19	.2	.2	91.2
MST.APP	18	.2	.2	91.4
CAD.CAE.AAS	17	.2	.2	91.6
SUR.APP	17	.2	.2	91.8
CUL.HMM.AAS	17	.2	.2	92.0
CAD.VDO. AASX	17	.2	.2	92.3
MDA.AAS	15	.2	.2	92.4
CRJ.PET.AAS	15	.2	.2	92.6
FFT.AAS	14	.2	.2	92.8
ACC.ABA	13	.2	.2	93.0
CIS.CPC.CT	13	.2	.2	93.2
MUS.CMT.ALA	13	.2	.2	93.3
PHT.CT	13	.2	.2	93.5
CER.AAS	13	.2	.2	93.6
THE.ALA	13	.2	.2	93.8
EXS.AAS	13	.2	.2	94.0
AUS.AAS	13	.2	.2	94.1
ELE.AAS	13	.2	.2	94.3
CIS.NWS.CT	12	.2	.2	94.5
ACH.AAS	12	.2	.2	94.6

Credit Program

	Frequency	Percent	Valid Percent	Cumulative Percent
Valid VET.MCC.REC	12	.2	.2	94.8
CIS.MMC.CT	12	.2	.2	94.9
SLI.AAS	11	.1	.1	95.1
NUR.RNE.APP	11	.1	.1	95.2
COS.MGT.AAS	11	.1	.1	95.3
ICM.PRE.ALA	11	.1	.1	95.5
NMT.AAS	11	.1	.1	95.6
HCA.AAS	11	.1	.1	95.8
MET.AAS	9	.1	.1	95.9
NUR.TPN.APP	9	.1	.1	96.0
CIS.SYA.AAS	9	.1	.1	96.1
MDA.AASX	9	.1	.1	96.2
MUS.PVO.ALA	8	.1	.1	96.3
CIS.WDC.CT	8	.1	.1	96.4
MUS.CT	8	.1	.1	96.5
MUS.PIN.ALA	8	.1	.1	96.6
RTT.AAS	8	.1	.1	96.7
CUL.RMP. AASX	8	.1	.1	96.8
NUR.AASX	8	.1	.1	96.9
CIS.SWE.CT	7	.1	.1	97.0
MGT.ENO.AAS	7	.1	.1	97.1
ROB.AUT.AASX	7	.1	.1	97.2
ECD.APP	6	.1	.1	97.3
CIS.CTS.CT	6	.1	.1	97.4
MGT.AOM.AAS	6	.1	.1	97.4
MDA.CT	6	.1	.1	97.5
ACC.CT	6	.1	.1	97.6
LSH.AAS	6	.1	.1	97.7
ETT.AAS	5	.1	.1	97.7
EMS.FFP.AASX	5	.1	.1	97.8
LAD.AAS	5	.1	.1	97.9
CRJ.GEN.AAS	5	.1	.1	97.9
CRJ.CRO.AAS	5	.1	.1	98.0
LGL.AAS	5	.1	.1	98.0
CIS.CSU.CT	4	.1	.1	98.1
CAD.AIM.AASX	4	.1	.1	98.2
CIS.SYA.CT	4	.1	.1	98.2
CNT.AAS	4	.1	.1	98.3
CIS.THS.AAS	4	.1	.1	98.3
EMS.APP	4	.1	.1	98.4
CAD.MTO. AASX	4	.1	.1	98.4
EST.AAS	4	.1	.1	98.5
HPT.AAS	4	.1	.1	98.5
OTA.MCC.REC	4	.1	.1	98.6
MDA.MIC.CA	4	.1	.1	98.6
ENV.HVA.AASX	3	.0	.0	98.6
CIS.CUC.CT	3	.0	.0	98.7
ENV.HVT.AASX	3	.0	.0	98.7
COS.STY.AAS	3	.0	.0	98.8

**Credit Program**

		Frequency	Percent	Valid Percent	Cumulative Percent
Valid	EXS.BUS.AASX	3	.0	.0	98.8
	EXS.CT	3	.0	.0	98.8
	GRA.ILL.AAS	3	.0	.0	98.9
	MET.CT	3	.0	.0	98.9
	CIS.CYS.CT	3	.0	.0	99.0
	GRN.AAS	2	.0	.0	99.0
	CUL.RMP.AAS	2	.0	.0	99.0
	CRJ.LAW.CT	2	.0	.0	99.0
	BIS.CT	2	.0	.0	99.1
	EMS.AASX	2	.0	.0	99.1
	MSM.MMR.AAS	2	.0	.0	99.1
	CAR.PRT.CT	2	.0	.0	99.1
	IND.AAS	2	.0	.0	99.2
	EMT.AASX	2	.0	.0	99.2
	ROB.AUT.CT	2	.0	.0	99.2
	CIS.THS.CT	2	.0	.0	99.2
	ETT.CT	2	.0	.0	99.3
	MST.AAS	2	.0	.0	99.3
	CRJ.SEC.AAS	2	.0	.0	99.3
	MSM.MME.AAS	2	.0	.0	99.3
	BAT.ALA	2	.0	.0	99.4
	EMT.APP	2	.0	.0	99.4
	AUS.CT	2	.0	.0	99.4
	SUR.AAS	2	.0	.0	99.4
	CCR.AAS	2	.0	.0	99.5
	CHT.CT	2	.0	.0	99.5
	MSM.MMP.AAS	1	.0	.0	99.5
	CIM.NUC.AAS	1	.0	.0	99.5
	RAL.AASX	1	.0	.0	99.5
	CAD.CAE.CT	1	.0	.0	99.5
	MTT.CNC.AAS	1	.0	.0	99.6
	AVM.AAS	1	.0	.0	99.6
	LBT.AAS	1	.0	.0	99.6
	CIS.DBA.CA	1	.0	.0	99.6
	MDA.PHT.CA	1	.0	.0	99.6
	CIS.OSE.CA	1	.0	.0	99.6
	HCA.CT	1	.0	.0	99.6
	CAD.AAS	1	.0	.0	99.6
	ENV.HVC.CT	1	.0	.0	99.7
	CIS.WSE.CA	1	.0	.0	99.7
	CCT.AAS	1	.0	.0	99.7
	GRN.CT	1	.0	.0	99.7
	EXS.BUS.CT	1	.0	.0	99.7
	EGR.ASC	1	.0	.0	99.7
	NUR.TPN.AAS	1	.0	.0	99.7
	MGT.RFB.AAS	1	.0	.0	99.7
	NUR.MCL.CT	1	.0	.0	99.8
	EGR.EPT.AASX	1	.0	.0	99.8
	MGT.SBO.AAS	1	.0	.0	99.8
	LEG.AAS	1	.0	.0	99.8
	LGL.APP	1	.0	.0	99.8

**Credit Program**

		Frequency	Percent	Valid Percent	Cumulative Percent
Valid	CUL.FSM.AAS	1	.0	.0	99.8
	ENV.SPI.AAS	1	.0	.0	99.8
	DMS.AASX	1	.0	.0	99.8
	EMS.PAR.CT	1	.0	.0	99.9
	ENV.FAC.AAS	1	.0	.0	99.9
	CER.CT	1	.0	.0	99.9
	CDA.CT	1	.0	.0	99.9
	DHY.AASX	1	.0	.0	99.9
	CRJ.CRO.CT	1	.0	.0	99.9
	IND.MAR.CT	1	.0	.0	99.9
	MGT.CCM.CT	1	.0	.0	99.9
	WEL.CT	1	.0	.0	100.0
	LTN.AAS	1	.0	.0	100.0
	IND.MIL.CT	1	.0	.0	100.0
	MDA.MOA.CA	1	.0	.0	100.0
	Total	7841	100.0	100.0	

**Educational Goal**

		Frequency	Percent	Valid Percent	Cumulative Percent
Valid	Obtain OCC degree or certificate	2073	26.4	26.4	26.4
	Transfer without obtaining degree or certificate	1973	25.2	25.2	51.6
	Transfer after obtaining degree or certificate	1866	23.8	23.8	75.4
	Undecided	1228	15.7	15.7	91.1
	Employment Related Knowledge	297	3.8	3.8	94.8
		229	2.9	2.9	97.8
	Gain knowledge unrelated to employment	175	2.2	2.2	100.0
	Total	7841	100.0	100.0	