



OAKLAND
COMMUNITY
COLLEGE

Final

DRAFT

FAST FACTS ABOUT OCC STUDENTS, FALL 2006

HIGHLAND LAKES CAMPUS

COLLEGE-WIDE HEADCOUNT	24,123
HIGHLAND LAKES CAMPUS HEADCOUNT	5,013

DEMOGRAPHICS

AGE	
Average Age	26.12
Median Age	22
Modal Age	19
Age Range	15 to 90

GENDER		
	#	%
Female	3,249	65%
Male	1,652	33%
Unreported	112	2%

FULL AND PART-TIME STUDENTS		
	#	%
Part-Time	3,152	63%
Full-Time	1,861	37%

Full-Time students are registered for 12 or more credit hours.

RACE / ETHNICITY		
	#	%
White	3,948	79%
African American	278	6%
Unknown or Unreported	315	6%
Hispanic	128	3%
Asian	91	2%
Native American	22	0%
Non-Resident Alien	231	5%

**Percents do not add up to 100%, due to rounding*

CITIES WHERE MORE THAN 300 OCC STUDENTS RESIDE		
	#	%
Waterford	1,106	22%
White Lake	467	9%
Clarkston	319	6%

✓ app - 1-11-07

FAST FACTS ABOUT OCC STUDENTS, FALL 2006 HIGHLAND LAKES CAMPUS

COURSE OF STUDY

TOP CREDIT PROGRAMS (OVER 200 ENROLLED)		
	#	%
Nursing (NUR.AASX and NUR.APP)	739 ✓	15% ✓
General Studies (GEN.AGS)	359 ✓	7% ✓
Business Administration (BUS.ABA)	308 ✓	6% ✓
Liberal Arts (ALA.ALA)	261 ✓	5% ✓
Undecided Students (UND.NON)	1,222 ✓	24% ✓
Guest Students (GUE)	82 ✓	2% ✓
Non-Degree Students (NDS.NON)	86 ✓	2% ✓

STUDENT EDUCATIONAL GOAL AT TIME OF REGISTRATION		
	#	%
To obtain an OCC degree or certificate	1,889 ✓	38% ✓
To transfer to another institution <i>after</i> obtaining an OCC degree or certificate	1,118 ✓	22% ✓
To transfer to another institution <i>without</i> obtaining an OCC degree or certificate	942 ✓	19% ✓
To gain knowledge <i>related</i> to employment	113 ✓	2% ✓
To gain knowledge <i>unrelated</i> to employment	36 ✓	1% ✓
Undecided	697 ✓	14% ✓
Unknown or Unreported	218 ✓	4% ✓

BY CAMPUS

UNDUPLICATED HEADCOUNT AND CREDIT HOURS

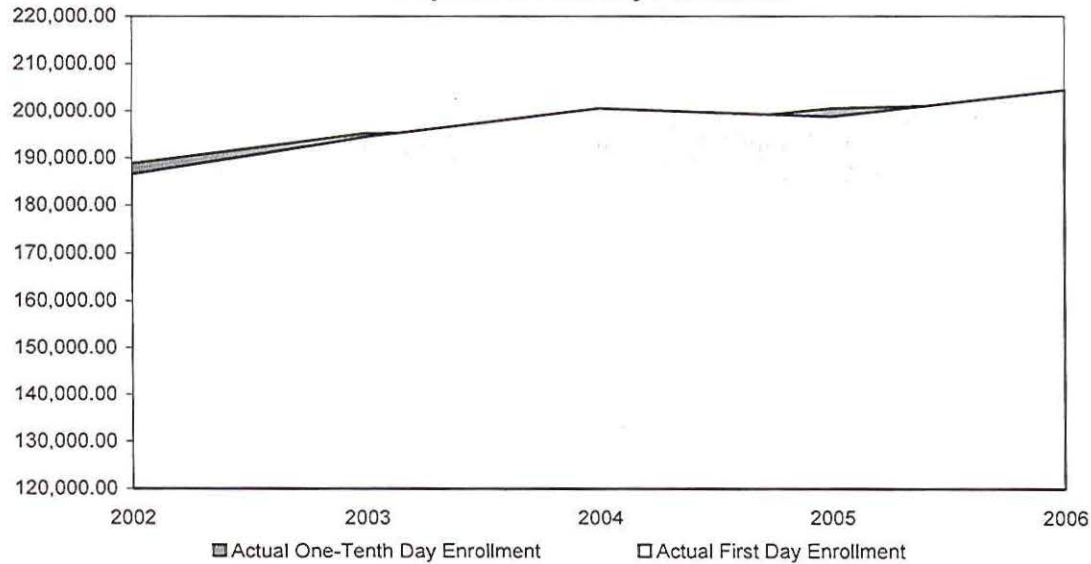
Note: Total unduplicated headcount includes all students college-wide registered and taking at least one course at Oakland Community College. Students may attend courses at more than one campus. Therefore students' headcount is counted in each location. As a result, campus unduplicated headcounts will not add up to college-wide unduplicated headcount.

	Headcount	FTE	Credit Hours	Average Credit Load
College-Wide	24,123 ✓	13,454	201,808.5 ✓	8.37
Highland Lakes	5,013 ✓	2,273	34,097.5 ✓	6.80 ✓

Oakland Community College
 Official Enrollment Report - **Student Credit Hours**
 Fall 2006 - One-Tenth Day
College-Wide

	2002	2003	2004	2005	2006	1-Year % Change	5-Year % Change
Actual First Day Enrollment	186,569.00	194,488.50	200,467.00	198,698.00	204,425.50	2.9%	9.6%
Actual One-Tenth Day Enrollment	188,882.00	195,253.00	195,633.50	200,503.00	201,808.50 ✓	0.7%	6.8%
% of Actual First Day Enrollment	101.2%	100.4%	97.6%	100.9%	98.7%		

**Actual One-Tenth Day Enrollment
 Compared to First Day Enrollment**



Summary

In comparison with the One-Tenth Day of Session, Fall 2005, actual credit hours have increased by 0.7%.

The five-year percentage change for actual student credit hours is showing an increase of 6.8%.

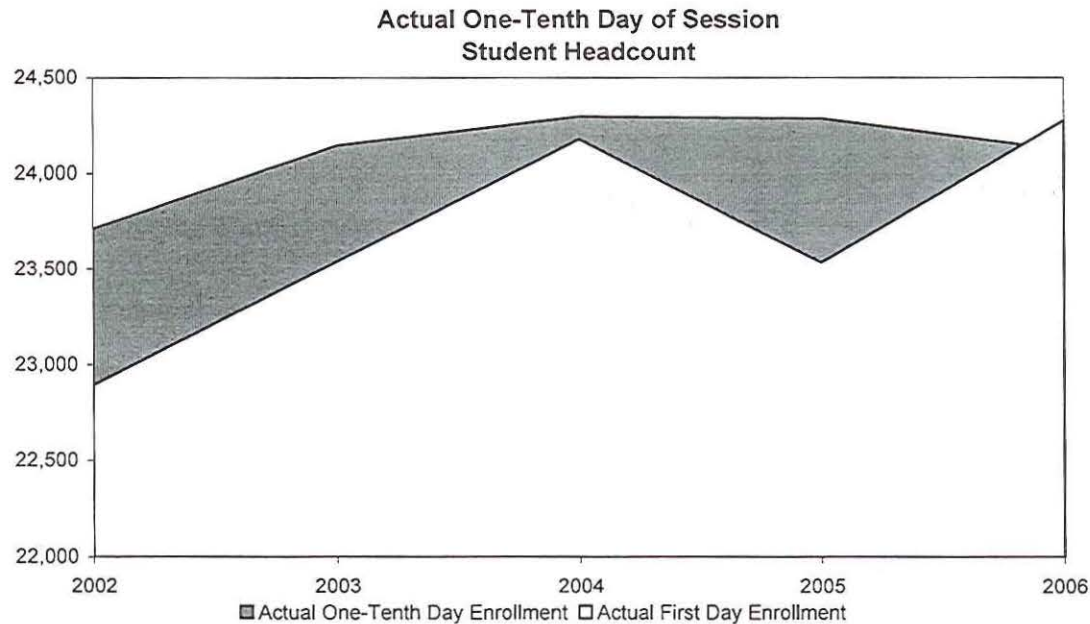
Student Credit Hours, as of the One-Tenth Day of Session, Fall 2006, are 98.7% of the First Day of Session, Fall 2006.

NOTE: The actual student credit hours are based on credit courses only.

✓ op 1-11-07

Oakland Community College
Official Enrollment Report - Student Headcount
Fall 2006 - One-Tenth Day
College-Wide

	2002	2003	2004	2005	2006	1-Year % Change	5-Year % Change
Actual First Day Enrollment	22,895	23,539	24,179	23,534	24,277	3.2%	6.0%
Actual One-Tenth Day Enrollment	23,713	24,145	24,296	24,287	24,123	-0.7%	1.7%
% of Actual First Day Enrollment	103.6%	102.6%	100.5%	103.2%	99.4%		



Summary

The One-Tenth Day of Session student headcount decreased 0.7% from Fall 2005 to Fall 2006.

The five-year percentage change shows a 1.7% increase in actual student headcount.

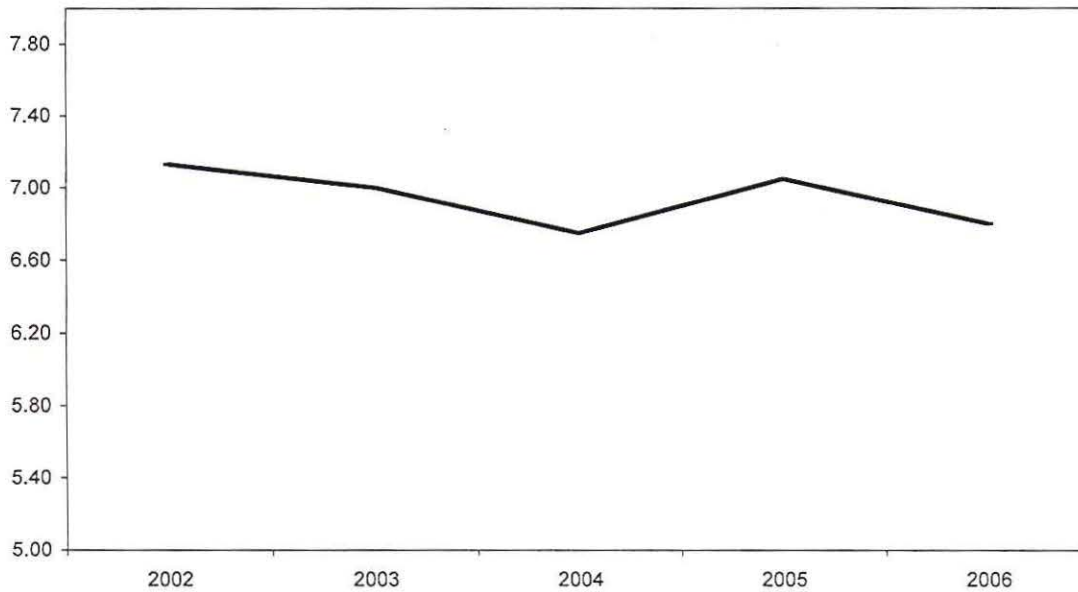
Student headcount, as of the One-Tenth Day of Session, Fall 2006, is at 99.4% of First Day of Session, Fall 2006.

NOTE: Summation of campus headcounts do not equal college totals due to attendance at more than one campus.

Oakland Community College
 Official Enrollment Report - **Credit Hours Per Student**
 Fall 2006 - One-Tenth Day
Highland Lakes

	2002	2003	2004	2005	2006	1-Year % Change	5-Year % Change
Actual One-Tenth Day Credit Hours	30,320.50	31,995.00	29,892.00	34,134.00	34,097.50	-0.1%	12.5%
Actual One-Tenth Day Headcount	4,254.00	4,570.00	4,427.00	4,840.00	5,013.00	3.6%	17.8%
Credit Hours Per Student /OTD	7.13	7.00	6.75	7.05	6.80	-3.5%	-4.6%

Credit Hours Per Student Ratio



Summary

For the One-Tenth Day of Session, Fall 2006, students at Highland Lakes enrolled in an average of 6.80 credits. This represents a 3.5% decrease in credit hours per student from Fall 2005.

The five-year percentage change for credit hours per student shows a decrease of 4.6%.

NOTE: Summation of campus headcounts do not equal college totals due to attendance at more than one campus. The actual student credit hours are based on credit courses only.

Frequencies

[DataSet2] I:\Internal Reporting\Enrollment\Fall Enrollment Profile (for Fast Facts)\Fall 2006\Campus_2006 OTD\Demo065T_status1_HLonly.sav

Statistics

age06

N	Valid	5005
	Missing	8

age06

	Frequency	Percent	Valid Percent	Cumulative Percent
Valid 15.00	2	.0	.0	.0
16.00	10	.2	.2	.2
17.00	35	.7	.7	.9
18.00	537	10.7	10.7	11.7
19.00	670	13.4	13.4	25.1
20.00	582	11.6	11.6	36.7
21.00	447	8.9	8.9	45.6
22.00	319	6.4	6.4	52.0
23.00	246	4.9	4.9	56.9
24.00	218	4.3	4.4	61.3
25.00	164	3.3	3.3	64.5
26.00	138	2.8	2.8	67.3
27.00	131	2.6	2.6	69.9
28.00	113	2.3	2.3	72.2
29.00	90	1.8	1.8	74.0
30.00	98	2.0	2.0	75.9
31.00	77	1.5	1.5	77.5
32.00	64	1.3	1.3	78.7
33.00	86	1.7	1.7	80.5
34.00	86	1.7	1.7	82.2
35.00	70	1.4	1.4	83.6
36.00	77	1.5	1.5	85.1
37.00	58	1.2	1.2	86.3
38.00	51	1.0	1.0	87.3
39.00	52	1.0	1.0	88.3
40.00	56	1.1	1.1	89.5
41.00	54	1.1	1.1	90.5
42.00	40	.8	.8	91.3
43.00	48	1.0	1.0	92.3
44.00	45	.9	.9	93.2
45.00	41	.8	.8	94.0
46.00	47	.9	.9	94.9
47.00	37	.7	.7	95.7
48.00	28	.6	.6	96.2
49.00	27	.5	.5	96.8
50.00	31	.6	.6	97.4
51.00	26	.5	.5	97.9
52.00	20	.4	.4	98.3
53.00	21	.4	.4	98.7
54.00	19	.4	.4	99.1

✓ ap-1-11-07

City

	Frequency	Percent	Valid Percent	Cumulative Percent
Valid Casco Township	1	.0	.0	3.0
Cass City	1	.0	.0	3.0
Chesterfield Townshi	1	.0	.0	3.0
Clarkston	319	6.4	6.4	9.4
Clawson	18	.4	.4	9.7
Clinton Twp	3	.1	.1	9.8
Clinton Twp.	1	.0	.0	9.8
Cmmrce Township	3	.1	.1	9.9
Comerce	2	.0	.0	9.9
Commerce	185	3.7	3.7	13.6
Commerce Township	10	.2	.2	13.8
Commerce Twp	113	2.3	2.3	16.1
Commerce Twp.	7	.1	.1	16.2
Commerce Twsp	2	.0	.0	16.2
Comstock Park	1	.0	.0	16.3
Davisburg	77	1.5	1.5	17.8
Davison	3	.1	.1	17.9
Dearborn	2	.0	.0	17.9
Dearborn Heights	4	.1	.1	18.0
Dearborn Hts	1	.0	.0	18.0
Detroit	57	1.1	1.1	19.1
Dryden	1	.0	.0	19.2
Durand	1	.0	.0	19.2
East Lansing	1	.0	.0	19.2
East Pointe	1	.0	.0	19.2
Ecorse	1	.0	.0	19.2
Farmington	6	.1	.1	19.3
Farmington Hills	83	1.7	1.7	21.0
Farmington HI	11	.2	.2	21.2
Farmington Hls	1	.0	.0	21.2
Fenton	34	.7	.7	21.9
Ferndale	16	.3	.3	22.2
Flint	8	.2	.2	22.4
Flushing	2	.0	.0	22.4
Fowlerville	2	.0	.0	22.5
Franklin	4	.1	.1	22.6
Frmington Hills	5	.1	.1	22.7
Ft. Gratiot	1	.0	.0	22.7
Garden City	2	.0	.0	22.7
Goodrich	7	.1	.1	22.9
Grand Blanc	6	.1	.1	23.0
Grosse Pointe	1	.0	.0	23.0
Hamburg	1	.0	.0	23.0
Hamtramck	2	.0	.0	23.1
Hamtramick	1	.0	.0	23.1
Harrison Township	2	.0	.0	23.1
Hartland	14	.3	.3	23.4
Hazel Park	26	.5	.5	23.9
Highland	275	5.5	5.5	29.4
Highland Twp	2	.0	.0	29.4
Holly	138	2.8	2.8	32.2

City

	Frequency	Percent	Valid Percent	Cumulative Percent
Valid Howell	20	.4	.4	32.6
Huntington Wd	1	.0	.0	32.6
Huntington Woods	1	.0	.0	32.6
Imlay City	1	.0	.0	32.7
Independence Twp	1	.0	.0	32.7
Johannesburg	1	.0	.0	32.7
Keego Harbor	25	.5	.5	33.2
Lake Leelanau	1	.0	.0	33.2
Lake Orion	69	1.4	1.4	34.6
Lapeer	5	.1	.1	34.7
Lathrup Village	1	.0	.0	34.7
Leonard	8	.2	.2	34.9
Levering	1	.0	.0	34.9
Linden	8	.2	.2	35.0
Livonia	12	.2	.2	35.3
Macomb	7	.1	.1	35.4
Macomb Twp	2	.0	.0	35.5
Madison Heights	20	.4	.4	35.9
Madison Hgts	14	.3	.3	36.1
Madison Hts	1	.0	.0	36.2
Madison Heights	1	.0	.0	36.2
Maison Heights	1	.0	.0	36.2
Marine City	1	.0	.0	36.2
Metamora	4	.1	.1	36.3
Midland	1	.0	.0	36.3
Milford	215	4.3	4.3	40.6
New Boston	1	.0	.0	40.6
New Hudson	8	.2	.2	40.8
North Branch	1	.0	.0	40.8
Northville	10	.2	.2	41.0
Novi	52	1.0	1.0	42.1
Novi,	15	.3	.3	42.3
Oak Park	20	.4	.4	42.7
Oakland	7	.1	.1	42.9
Oakland Township	1	.0	.0	42.9
Oakland Twp	1	.0	.0	42.9
Oakland Twp.	1	.0	.0	42.9
Orchard Lake	12	.2	.2	43.2
Orion	19	.4	.4	43.6
Orion Twp	1	.0	.0	43.6
Ortonville	63	1.3	1.3	44.8
Oscoda	2	.0	.0	44.9
Ossineke	1	.0	.0	44.9
Oxford	63	1.3	1.3	46.2
Pinckney	1	.0	.0	46.2
Pleasant Ridge	1	.0	.0	46.2
Plymouth	3	.1	.1	46.3
Pontiac	140	2.8	2.8	49.1
Port Huron	1	.0	.0	49.1
Redford	6	.1	.1	49.2
Redford Township	1	.0	.0	49.2

City

	City	Frequency	Percent	Valid Percent	Cumulative Percent
Valid	Redford Twp	4	.1	.1	49.3
	Redford Twp.	1	.0	.0	49.3
	Richmond	1	.0	.0	49.3
	Rochester	15	.3	.3	49.6
	Rochester Hills	97	1.9	1.9	51.6
	Rochester Hls	8	.2	.2	51.7
	Rochesterhills	1	.0	.0	51.7
	Romeo	2	.0	.0	51.8
	Roseville	1	.0	.0	51.8
	Royal Oak	56	1.1	1.1	52.9
	Saginaw	1	.0	.0	52.9
	Shelby	1	.0	.0	53.0
	Shelby Township	5	.1	.1	53.1
	Shelby Twp	8	.2	.2	53.2
	Shelby Twp.	2	.0	.0	53.3
	South Lyon	14	.3	.3	53.5
	Southfield	72	1.4	1.4	55.0
	St. Clair Shores	2	.0	.0	55.0
	Sterling Heights	11	.2	.2	55.2
	Sterling Ht.S	1	.0	.0	55.3
	Sterling Hts	1	.0	.0	55.3
	Swartz Creek	1	.0	.0	55.3
	Sylvan Lake	9	.2	.2	55.5
	Taylor	5	.1	.1	55.6
	Trenton	1	.0	.0	55.6
	Troy	80	1.6	1.6	57.2
	Union Lake	4	.1	.1	57.3
	Utica	4	.1	.1	57.4
	W Bloomfield	8	.2	.2	57.5
	Walled Lake	89	1.8	1.8	59.3
	Walled Lk	49	1.0	1.0	60.3
	Warren	13	.3	.3	60.5
	Washington	3	.1	.1	60.6
	Washington Township	1	.0	.0	60.6
	Washington Twp	1	.0	.0	60.6
✓	Waterford	1106	22.1	22.1	82.7
	West Bloomfield	2	.0	.0	82.7
	West Bloomfield	268	5.3	5.3	88.1
	Westbloomfield	1	.0	.0	88.1
	Westland	9	.2	.2	88.3
	White	1	.0	.0	88.3
	White Lake	463	9.2	9.2	97.5
✓	White Lake Township	1	.0	.0	97.5
	White Lk	2	.0	.0	97.6
	Whitelake	2	.0	.0	97.6
	Whitmore Lake	1	.0	.0	97.6
	Windsor	2	.0	.0	97.7
	Wixom	100	2.0	2.0	99.7
	Wolverine Lake	12	.2	.2	99.9
	Wolverine Lk	2	.0	.0	100.0
	Woodhaven	1	.0	.0	100.0

$$\frac{467}{5013} = .09315$$

 9%

City

	Frequency	Percent	Valid Percent	Cumulative Percent
Valid Wyandotte	1	.0	.0	100.0
Total	5013	100.0	100.0	

Reported Race/Ethnicity

	Frequency	Percent	Valid Percent	Cumulative Percent
Valid	143	2.9	2.9	2.9
African American	278	5.5	5.5	8.4
Asian	91	1.8	1.8	10.2
Hispanic	128	2.6	2.6	12.8
Native American	22	.4	.4	13.2
Non Resident Alien	231	4.6	4.6	17.8
Race Unknown	172	3.4	3.4	21.2
White	3948	78.8	78.8	100.0
Total	5013	100.0	100.0	

315 ✓

143
172
315
 $\frac{315}{5013} = .0628$

.063 ✓

Credits Registered This Term

	Frequency	Percent	Valid Percent	Cumulative Percent
Valid 1.00	41	.8	.8	.8
2.00	42	.8	.8	1.7
3.00	378	7.5	7.5	9.2
4.00	407	8.1	8.1	17.3
4.50	4	.1	.1	17.4
5.00	77	1.5	1.5	18.9
5.50	1	.0	.0	19.0
6.00	414	8.3	8.3	27.2
7.00	592	11.8	11.8	39.0
8.00	365	7.3	7.3	46.3
8.50	16	.3	.3	46.6
9.00	307	6.1	6.1	52.7
9.50	21	.4	.4	53.2
10.00	309	6.2	6.2	59.3
11.00	174	3.5	3.5	62.8
11.50	4	.1	.1	62.9
12.00	722	14.4	14.4	77.3
13.00	577	11.5	11.5	88.8
14.00	330	6.6	6.6	95.4
14.50	1	.0	.0	95.4
15.00	113	2.3	2.3	97.6
16.00	70	1.4	1.4	99.0
17.00	37	.7	.7	99.8
18.00	10	.2	.2	100.0
19.00	1	.0	.0	100.0
Total	5013	100.0	100.0	

Part-time
~~3152~~
3152
 $\frac{3152}{5013} = .6288$ ✓

Fall-time
1861
 $\frac{1861}{5013} = .3712$ ✓

Credit Program

	Frequency	Percent	Valid Percent	Cumulative Percent
Valid ACC.AAS	58	1.2	1.2	1.2
ACC.ABA	10	.2	.2	1.4
ACC.CT	2	.0	.0	1.4
ACH.AAS	6	.1	.1	1.5
ACH.AASX	21	.4	.4	1.9
✓ ALA.ALA	261	5.2	5.2	7.1
ASC.ASC	90	1.8	1.8	8.9
AUS.AAS	17	.3	.3	9.3
AUS.CT	3	.1	.1	9.3
AVM.AAS	2	.0	.0	9.4
BAT.ALA	3	.1	.1	9.4
BIS.AAS	11	.2	.2	9.7
✓ BUS.ABA	308	6.1	6.1	15.8
CAD.CAE.AAS	12	.2	.2	16.0
CAD.LV1.CA	2	.0	.0	16.1
CAD.MTO.AASX	3	.1	.1	16.1
CAD.VDO.AASX	14	.3	.3	16.4
CAD.VDO.CT	1	.0	.0	16.4
CAR.NRT.CT	1	.0	.0	16.5
CAR.PRT.CT	1	.0	.0	16.5
CCR.AAS	3	.1	.1	16.5
CCT.AAS	2	.0	.0	16.6
CER.AAS	3	.1	.1	16.6
CHT.AAS	15	.3	.3	16.9
CIM.NUC.AAS	1	.0	.0	17.0
CIS.AAS	9	.2	.2	17.1
CIS.CPA.AAS	9	.2	.2	17.3
CIS.CPC.CT	2	.0	.0	17.4
CIS.CSU.AAS	8	.2	.2	17.5
CIS.CSU.CT	2	.0	.0	17.6
CIS.CTS.AAS	11	.2	.2	17.8
CIS.CTS.CT	2	.0	.0	17.8
CIS.CYS.CT	2	.0	.0	17.9
CIS.MMC.CT	7	.1	.1	18.0
CIS.SWE.AAS	1	.0	.0	18.0
CIS.SWE.CT	1	.0	.0	18.0
CIS.SYA.AAS	2	.0	.0	18.1
CIS.THS.AAS	2	.0	.0	18.1
CIS.WDC.CT	4	.1	.1	18.2
CNT.AAS	2	.0	.0	18.2
COS.MGT.AAS	8	.2	.2	18.4
COS.STY.AAS	1	.0	.0	18.4
CRJ.CRO.AAS	4	.1	.1	18.5
CRJ.GEN.AAS	9	.2	.2	18.7
CRJ.LAW.AAS	70	1.4	1.4	20.1
CRJ.LAW.CT	1	.0	.0	20.1
CRJ.PET.AAS	16	.3	.3	20.4
CRJ.SEC.AAS	5	.1	.1	20.5
CUL.AASX	15	.3	.3	20.8
CUL.HMM.AAS	5	.1	.1	20.9

Credit Program

	Frequency	Percent	Valid Percent	Cumulative Percent
Valid CUL.RMP.AAS	1	.0	.0	20.9
DHY.AASX	24	.5	.5	21.4
DHY.APP	122	2.4	2.4	23.8
DMS.APP	38	.8	.8	24.6
ECD.AAS	120	2.4	2.4	27.0
ECD.APP	19	.4	.4	27.4
EDU.ALA	50	1.0	1.0	28.4
EGR.ASC	2	.0	.0	28.4
EGR.PRE.ASC	68	1.4	1.4	29.8
ELE.AAS	14	.3	.3	30.0
EMS.APP	3	.1	.1	30.1
EMS.CA	1	.0	.0	30.1
EMT.AASX	4	.1	.1	30.2
EMT.APP	3	.1	.1	30.3
EMT.CT	1	.0	.0	30.3
END.AAS	1	.0	.0	30.3
ENV.HVA.AASX	4	.1	.1	30.4
ENV.HVT.AASX	4	.1	.1	30.5
EST.AAS	3	.1	.1	30.5
ETT.AAS	4	.1	.1	30.6
ETT.ELF.CT	1	.0	.0	30.6
ETT.ELM.AAS	1	.0	.0	30.6
EXS.AAS	26	.5	.5	31.2
EXS.BUS.AASX	1	.0	.0	31.2
EXS.CT	3	.1	.1	31.2
EXS.GRN.AASX	1	.0	.0	31.3
FAV.ALA	42	.8	.8	32.1
FFT.AAS	8	.2	.2	32.3
FFT.CT	1	.0	.0	32.3
✓ GEN.AGS	359 ✓	7.2 ✓	7.2 ✓	39.4
GRA.ADV.AAS	2	.0	.0	39.5
GRA.ILL.AAS	1	.0	.0	39.5
GRD.AAS	30	.6	.6	40.1
— GUE	82 ✓	1.6 ✓	1.6 ✓	41.7
HCA.AAS	12	.2	.2	42.0
HPT.AAS	2	.0	.0	42.0
HPT.APP	12	.2	.2	42.3
HSD	35	.7	.7	42.9
HSG	133	2.7	2.7	45.6
ICM.PRE.ALA	1	.0	.0	45.6
IND.AAS	1	.0	.0	45.6
IND.IPE.AAS	1	.0	.0	45.7
INT.AAS	23	.5	.5	46.1
LAD.AAS	2	.0	.0	46.2
LGL.AAS	3	.1	.1	46.2
LGL.APP	1	.0	.0	46.2
LSH.AAS	5	.1	.1	46.3
LST.AAS	1	.0	.0	46.4
LTA.AAS	1	.0	.0	46.4
MDA.AAS	43	.9	.9	47.2
MDA.AASX	12	.2	.2	47.5

Credit Program

	Frequency	Percent	Valid Percent	Cumulative Percent
Valid MDA.CT	17	.3	.3	47.8
MDA.MIC.CA	29	.6	.6	48.4
MDA.MOA.CA	10	.2	.2	48.6
MDA.MOC.CA	7	.1	.1	48.7
MDA.OPA.CA	4	.1	.1	48.8
MDA.PHT.CA	14	.3	.3	49.1
MET.AAS	10	.2	.2	49.3
MET.CT	1	.0	.0	49.3
MGT.ADO.AAS	1	.0	.0	49.3
MGT.AOM.AAS	2	.0	.0	49.4
MGT.BUS.AAS	31	.6	.6	50.0
MGT.CON.AAS	9	.2	.2	50.2
MGT.ENO.AAS	7	.1	.1	50.3
MGT.RFB.AAS	1	.0	.0	50.3
MGT.SBO.AAS	1	.0	.0	50.3
MHS.AAS	1	.0	.0	50.4
MHS.APP	42	.8	.8	51.2
MSM.MMA.AAS	1	.0	.0	51.2
MSM.MMP.AAS	1	.0	.0	51.2
MSM.MMR.AAS	1	.0	.0	51.3
MSM.MMT.AAS	1	.0	.0	51.3
MST.AAS	24	.5	.5	51.8
MST.APP	43	.9	.9	52.6
MTT.CNC.AAS	1	.0	.0	52.6
MUS.CMT.ALA	3	.1	.1	52.7
MUS.CT	1	.0	.0	52.7
MUS.PIN.ALA	1	.0	.0	52.7
NDS.NON	86	1.7	1.7	54.5
NMT.AAS	7	.1	.1	54.6
NUR.AASX	146	2.9	2.9	57.5
NUR.APP	593	11.8	11.8	69.3
NUR.PNE.APP	34	.7	.7	70.0
NUR.RNE.APP	12	.2	.2	70.3
NUR.TPN.AAS	18	.4	.4	70.6
NUR.TPN.AASX	1	.0	.0	70.6
NUR.TPN.APP	42	.8	.8	71.5
OTA.MCC.REC	3	.1	.1	71.5
PHT.AAS	15	.3	.3	71.8
PHT.CT	2	.0	.0	71.9
PLG.AAS	7	.1	.1	72.0
PLG.APP	28	.6	.6	72.6
PLG.CT	1	.0	.0	72.6
PTA.MCC.REC	26	.5	.5	73.1
RAL.APP	41	.8	.8	73.9
ROB.AUT.AASX	2	.0	.0	74.0
ROB.AUT.CT	1	.0	.0	74.0
RSP.APP	16	.3	.3	74.3
RTT.AAS	5	.1	.1	74.4
SLI.AAS	22	.4	.4	74.8
SUR.AAS	2	.0	.0	74.9

739
 $\frac{739}{5013} = .1474$
 1590

Credit Program

		Frequency	Percent	Valid Percent	Cumulative Percent
Valid	SUR.APP	15	.3	.3	75.2
	THE.ALA	1	.0	.0	75.2
	UND.NON	1222	24.4	24.4	99.6
	VET.MCC.REC	20	.4	.4	100.0
	WEL.CT	1	.0	.0	100.0
	Total	5013	100.0	100.0	

Educational Goal

		Frequency	Percent	Valid Percent	Cumulative Percent
Valid		218	4.3	4.3	4.3
	Obtain OCC degree or certificate	1889	37.7	37.7	42.0
	Gain knowledge unrelated to employment	36	.7	.7	42.7
	Employment Related Knowledge	113	2.3	2.3	45.0
	Transfer after obtaining degree or certificate	1118	22.3	22.3	67.3
	Transfer without obtaining degree or certificate	942	18.8	18.8	86.1
	Undecided	697	13.9	13.9	100.0
	Total	5013	100.0	100.0	

*SORTED BY DECENDING FREQ (LARGER NUMBERS ON TOP)
 FILTER OFF.
 USE ALL.
 FREQUENCIES
 VARIABLES=gender city repace credits crprog intent
 /FORMAT=DFREQ
 /ORDER= ANALYSIS .

Frequencies

[DataSet2] I:\Internal Reporting\Enrollment\Fall Enrollment Profile (for Fast Facts)\Fall 2006\Campus_2006 OTD\Demo065T_status1_HLonly.sav

Statistics

		Gender	City	Reported Race/Ethnicity	Credits Registered This Term	Credit Program	Educational Goal
N	Valid	5013	5013	5013	5013	5013	5013
	Missing	0	0	0	0	0	0

Frequency Table

Gender

		Frequency	Percent	Valid Percent	Cumulative Percent
Valid	F	3249	64.8	64.8	64.8
	M	1652	33.0	33.0	97.8
		111	2.2	2.2	100.0
	U	1	.0	.0	100.0
	Total	5013	100.0	100.0	

City

		Frequency	Percent	Valid Percent	Cumulative Percent
Valid	Waterford	1106	22.1	22.1	22.1
	White Lake	463	9.2	9.2	31.3
	Clarkston	319	6.4	6.4	37.7
	Highland	275	5.5	5.5	43.1
	West Bloomfield	268	5.3	5.3	48.5
	Milford	215	4.3	4.3	52.8
	Commerce	185	3.7	3.7	56.5
	Pontiac	140	2.8	2.8	59.3
	Holly	138	2.8	2.8	62.0
	Commerce Twp	113	2.3	2.3	64.3
	Wixom	100	2.0	2.0	66.3
	Rochester Hills	97	1.9	1.9	68.2
	Walled Lake	89	1.8	1.8	70.0
	Farmington Hills	83	1.7	1.7	71.6
	Troy	80	1.6	1.6	73.2
	Davisburg	77	1.5	1.5	74.8
	Southfield	72	1.4	1.4	76.2
	Lake Orion	69	1.4	1.4	77.6
	Ortonville	63	1.3	1.3	78.8
	Oxford	63	1.3	1.3	80.1
	Detroit	57	1.1	1.1	81.2
	Royal Oak	56	1.1	1.1	82.3
	Novi	52	1.0	1.0	83.4
	Walled Lk	49	1.0	1.0	84.4
	Auburn Hills	40	.8	.8	85.2
	Fenton	34	.7	.7	85.8
	Bloomfield Hills	32	.6	.6	86.5
	Hazel Park	26	.5	.5	87.0
	Keego Harbor	25	.5	.5	87.5
	Howell	20	.4	.4	87.9
	Madison Heights	20	.4	.4	88.3
	Brighton	20	.4	.4	88.7
	Oak Park	20	.4	.4	89.1
	Orion	19	.4	.4	89.5
	Clawson	18	.4	.4	89.8
	Bloomfield	16	.3	.3	90.1
	Ferndale	16	.3	.3	90.5
	Novi,	15	.3	.3	90.8
	Rochester	15	.3	.3	91.1
	Madison Hgts	14	.3	.3	91.3
	Berkley	14	.3	.3	91.6

City

	Frequency	Percent	Valid Percent	Cumulative Percent
Valid Hartland	14	.3	.3	91.9
South Lyon	14	.3	.3	92.2
Warren	13	.3	.3	92.4
Birmingham	12	.2	.2	92.7
Livonia	12	.2	.2	92.9
Orchard Lake	12	.2	.2	93.2
Wolverine Lake	12	.2	.2	93.4
Sterling Heights	11	.2	.2	93.6
Farmington HI	11	.2	.2	93.8
Commerce Township	10	.2	.2	94.0
Northville	10	.2	.2	94.2
Westland	9	.2	.2	94.4
Sylvan Lake	9	.2	.2	94.6
Flint	8	.2	.2	94.8
New Hudson	8	.2	.2	94.9
Linden	8	.2	.2	95.1
Leonard	8	.2	.2	95.2
Shelby Twp	8	.2	.2	95.4
Rochester Hls	8	.2	.2	95.6
W Bloomfield	8	.2	.2	95.7
Oakland	7	.1	.1	95.9
Macomb	7	.1	.1	96.0
Goodrich	7	.1	.1	96.1
Commerce Twp.	7	.1	.1	96.3
Farmington	6	.1	.1	96.4
Redford	6	.1	.1	96.5
Grand Blanc	6	.1	.1	96.6
Lapeer	5	.1	.1	96.7
Shelby Township	5	.1	.1	96.8
Taylor	5	.1	.1	96.9
Frmington Hills	5	.1	.1	97.0
Franklin	4	.1	.1	97.1
Redford Twp	4	.1	.1	97.2
Dearborn Heights	4	.1	.1	97.3
Metamora	4	.1	.1	97.3
Union Lake	4	.1	.1	97.4
Utica	4	.1	.1	97.5
Davison	3	.1	.1	97.6
Clinton Twp	3	.1	.1	97.6
Washington	3	.1	.1	97.7
Cmmrce Township	3	.1	.1	97.7
Canton	3	.1	.1	97.8
Plymouth	3	.1	.1	97.9
Wolverine Lk	2	.0	.0	97.9
Highland Twp	2	.0	.0	97.9
Commerce Twsp	2	.0	.0	98.0
Dearborn	2	.0	.0	98.0
Oscoda	2	.0	.0	98.1
St. Clair Shores	2	.0	.0	98.1
Flushing	2	.0	.0	98.1
Fowlerville	2	.0	.0	98.2

City

	Frequency	Percent	Valid Percent	Cumulative Percent
Valid Commerce	2	.0	.0	98.2
Hamtramck	2	.0	.0	98.3
White Lk	2	.0	.0	98.3
Almont	2	.0	.0	98.3
Harrison Township	2	.0	.0	98.4
Attica	2	.0	.0	98.4
Romeo	2	.0	.0	98.5
Macomb Twp	2	.0	.0	98.5
Windsor	2	.0	.0	98.5
Garden City	2	.0	.0	98.6
West Bloomfeld	2	.0	.0	98.6
Shelby Twp.	2	.0	.0	98.7
Whitelake	2	.0	.0	98.7
Ft. Gratiot	1	.0	.0	98.7
Huntington Woods	1	.0	.0	98.7
Clinton Twp.	1	.0	.0	98.8
Allen Park	1	.0	.0	98.8
Lake Leelanau	1	.0	.0	98.8
East Lansing	1	.0	.0	98.8
Rochesterhills	1	.0	.0	98.8
Johannesburg	1	.0	.0	98.9
Saginaw	1	.0	.0	98.9
Madisone Heights	1	.0	.0	98.9
Casco Township	1	.0	.0	98.9
Pinckney	1	.0	.0	98.9
Hamtramick	1	.0	.0	99.0
Bekley	1	.0	.0	99.0
North Branch	1	.0	.0	99.0
Beverly Hills	1	.0	.0	99.0
East Pointe	1	.0	.0	99.0
Lathrup Village	1	.0	.0	99.1
Cass City	1	.0	.0	99.1
Belleville	1	.0	.0	99.1
Burton	1	.0	.0	99.1
Ossineke	1	.0	.0	99.1
Oakland Twp.	1	.0	.0	99.2
Redford Twp.	1	.0	.0	99.2
Wyandotte	1	.0	.0	99.2
Dearborn Hts	1	.0	.0	99.2
Huntington Wd	1	.0	.0	99.2
White Lake Township	1	.0	.0	99.3
Washington Township	1	.0	.0	99.3
Redford Township	1	.0	.0	99.3
Chesterfield Townshi	1	.0	.0	99.3
Dryden	1	.0	.0	99.3
Comstock Park	1	.0	.0	99.4
Whitmore Lake	1	.0	.0	99.4
Oakland Twp	1	.0	.0	99.4
Durand	1	.0	.0	99.4
Swartz Creek	1	.0	.0	99.4
Washington Twp	1	.0	.0	99.5

City

	Frequency	Percent	Valid Percent	Cumulative Percent
Valid Richmond	1	.0	.0	99.5
Pleasant Ridge	1	.0	.0	99.5
Adrian	1	.0	.0	99.5
Oakland Township	1	.0	.0	99.5
Westbloomfield	1	.0	.0	99.6
Hamburg	1	.0	.0	99.6
Imlay City	1	.0	.0	99.6
Orion Twp	1	.0	.0	99.6
Grosse Pointe	1	.0	.0	99.6
Trenton	1	.0	.0	99.7
Maison Heights	1	.0	.0	99.7
Marine City	1	.0	.0	99.7
Woodhaven	1	.0	.0	99.7
New Boston	1	.0	.0	99.7
Shelby	1	.0	.0	99.8
Sterling Hts	1	.0	.0	99.8
Levering	1	.0	.0	99.8
Midland	1	.0	.0	99.8
White	1	.0	.0	99.8
Independence Twp	1	.0	.0	99.9
Roseville	1	.0	.0	99.9
Ecorse	1	.0	.0	99.9
Port Huron	1	.0	.0	99.9
Casco	1	.0	.0	99.9
Farmington Hls	1	.0	.0	100.0
Madison Hts	1	.0	.0	100.0
Sterling Ht.S	1	.0	.0	100.0
Total	5013	100.0	100.0	

Reported Race/Ethnicity

	Frequency	Percent	Valid Percent	Cumulative Percent
Valid White	3948	78.8	78.8	78.8
African American	278	5.5	5.5	84.3
Non Resident Alien	231	4.6	4.6	88.9
Race Unknown	172	3.4	3.4	92.3
	143	2.9	2.9	95.2
Hispanic	128	2.6	2.6	97.7
Asian	91	1.8	1.8	99.6
Native American	22	.4	.4	100.0
Total	5013	100.0	100.0	

Credits Registered This Term

	Frequency	Percent	Valid Percent	Cumulative Percent
Valid 12.00	722	14.4	14.4	14.4
7.00	592	11.8	11.8	26.2
13.00	577	11.5	11.5	37.7
6.00	414	8.3	8.3	46.0
4.00	407	8.1	8.1	54.1
3.00	378	7.5	7.5	61.6
8.00	365	7.3	7.3	68.9
14.00	330	6.6	6.6	75.5
10.00	309	6.2	6.2	81.7
9.00	307	6.1	6.1	87.8
11.00	174	3.5	3.5	91.3
15.00	113	2.3	2.3	93.5
5.00	77	1.5	1.5	95.1
16.00	70	1.4	1.4	96.4
2.00	42	.8	.8	97.3
1.00	41	.8	.8	98.1
17.00	37	.7	.7	98.8
9.50	21	.4	.4	99.3
8.50	16	.3	.3	99.6
18.00	10	.2	.2	99.8
11.50	4	.1	.1	99.9
4.50	4	.1	.1	99.9
19.00	1	.0	.0	100.0
5.50	1	.0	.0	100.0
14.50	1	.0	.0	100.0
Total	5013	100.0	100.0	

Credit Program

	Frequency	Percent	Valid Percent	Cumulative Percent
Valid UND.NON	1222	24.4	24.4	24.4
NUR.APP	593	11.8	11.8	36.2
GEN.AGS	359	7.2	7.2	43.4
BUS.ABA	308	6.1	6.1	49.5
ALA.ALA	261	5.2	5.2	54.7
NUR.AASX	146	2.9	2.9	57.6
HSG	133	2.7	2.7	60.3
DHY.APP	122	2.4	2.4	62.7
ECD.AAS	120	2.4	2.4	65.1
ASC.ASC	90	1.8	1.8	66.9
NDS.NON	86	1.7	1.7	68.6
GUE	82	1.6	1.6	70.3
CRJ.LAW.AAS	70	1.4	1.4	71.7
EGR.PRE.ASC	68	1.4	1.4	73.0
ACC.AAS	58	1.2	1.2	74.2
EDU.ALA	50	1.0	1.0	75.2
MST.APP	43	.9	.9	76.0
MDA.AAS	43	.9	.9	76.9
FAV.ALA	42	.8	.8	77.7
MHS.APP	42	.8	.8	78.6

Credit Program

		Frequency	Percent	Valid Percent	Cumulative Percent
Valid	NUR.TPN.APP	42	.8	.8	79.4
	RAL.APP	41	.8	.8	80.2
	DMS.APP	38	.8	.8	81.0
	HSD	35	.7	.7	81.7
	NUR.PNE.APP	34	.7	.7	82.3
	MGT.BUS.AAS	31	.6	.6	83.0
	GRD.AAS	30	.6	.6	83.6
	MDA.MIC.CA	29	.6	.6	84.1
	PLG.APP	28	.6	.6	84.7
	EXS.AAS	26	.5	.5	85.2
	PTA.MCC.REC	26	.5	.5	85.7
	MST.AAS	24	.5	.5	86.2
	DHY.AASX	24	.5	.5	86.7
	INT.AAS	23	.5	.5	87.2
	SLI.AAS	22	.4	.4	87.6
	ACH.AASX	21	.4	.4	88.0
	VET.MCC.REC	20	.4	.4	88.4
	ECD.APP	19	.4	.4	88.8
	NUR.TPN.AAS	18	.4	.4	89.1
	AUS.AAS	17	.3	.3	89.5
	MDA.CT	17	.3	.3	89.8
	RSP.APP	16	.3	.3	90.1
	CRJ.PET.AAS	16	.3	.3	90.5
	PHT.AAS	15	.3	.3	90.8
	SUR.APP	15	.3	.3	91.1
	CHT.AAS	15	.3	.3	91.4
	CUL.AASX	15	.3	.3	91.7
	CAD.VDO. AASX	14	.3	.3	91.9
	ELE.AAS	14	.3	.3	92.2
	MDA.PHT.CA	14	.3	.3	92.5
	HPT.APP	12	.2	.2	92.7
	MDA.AASX	12	.2	.2	93.0
	CAD.CAE.AAS	12	.2	.2	93.2
	HCA.AAS	12	.2	.2	93.5
	NUR.RNE.APP	12	.2	.2	93.7
	BIS.AAS	11	.2	.2	93.9
	CIS.CTS.AAS	11	.2	.2	94.1
	ACC.ABA	10	.2	.2	94.3
	MET.AAS	10	.2	.2	94.5
	MDA.MOA.CA	10	.2	.2	94.7
	CRJ.GEN.AAS	9	.2	.2	94.9
	MGT.CON.AAS	9	.2	.2	95.1
	CIS.AAS	9	.2	.2	95.3
	CIS.CPA.AAS	9	.2	.2	95.5
	FFT.AAS	8	.2	.2	95.6
	CIS.CSU.AAS	8	.2	.2	95.8
	COS.MGT.AAS	8	.2	.2	95.9
	CIS.MMC.CT	7	.1	.1	96.1
	PLG.AAS	7	.1	.1	96.2
	MGT.ENO.AAS	7	.1	.1	96.3
	MDA.MOC.CA	7	.1	.1	96.5

Credit Program

	Frequency	Percent	Valid Percent	Cumulative Percent
Valid NMT.AAS	7	.1	.1	96.6
ACH.AAS	6	.1	.1	96.7
LSH.AAS	5	.1	.1	96.8
CRJ.SEC.AAS	5	.1	.1	96.9
CUL.HMM.AAS	5	.1	.1	97.0
RTT.AAS	5	.1	.1	97.1
ETT.AAS	4	.1	.1	97.2
ENV.HVA.AASX	4	.1	.1	97.3
ENV.HVT.AASX	4	.1	.1	97.4
MDA.OPA.CA	4	.1	.1	97.5
EMT.AASX	4	.1	.1	97.5
CIS.WDC.CT	4	.1	.1	97.6
CRJ.CRO.AAS	4	.1	.1	97.7
OTA.MCC.REC	3	.1	.1	97.8
EST.AAS	3	.1	.1	97.8
LGL.AAS	3	.1	.1	97.9
AUS.CT	3	.1	.1	97.9
BAT.ALA	3	.1	.1	98.0
CAD.MTO.AASX	3	.1	.1	98.1
CER.AAS	3	.1	.1	98.1
EXS.CT	3	.1	.1	98.2
CCR.AAS	3	.1	.1	98.2
MUS.CMT.ALA	3	.1	.1	98.3
EMT.APP	3	.1	.1	98.4
EMS.APP	3	.1	.1	98.4
LAD.AAS	2	.0	.0	98.5
AVM.AAS	2	.0	.0	98.5
CIS.THS.AAS	2	.0	.0	98.5
CIS.CSU.CT	2	.0	.0	98.6
PHT.CT	2	.0	.0	98.6
CIS.CPC.CT	2	.0	.0	98.7
ACC.CT	2	.0	.0	98.7
ROB.AUT.AASX	2	.0	.0	98.7
EGR.ASC	2	.0	.0	98.8
MGT.AOM.AAS	2	.0	.0	98.8
CIS.CYS.CT	2	.0	.0	98.9
CNT.AAS	2	.0	.0	98.9
HPT.AAS	2	.0	.0	98.9
CAD.LV1.CA	2	.0	.0	99.0
SUR.AAS	2	.0	.0	99.0
GRA.ADV.AAS	2	.0	.0	99.1
CCT.AAS	2	.0	.0	99.1
CIS.CTS.CT	2	.0	.0	99.1
CIS.SYA.AAS	2	.0	.0	99.2
COS.STY.AAS	1	.0	.0	99.2
CUL.RMP.AAS	1	.0	.0	99.2
MSM.MMR.AAS	1	.0	.0	99.2
LGL.APP	1	.0	.0	99.3
ETT.ELF.CT	1	.0	.0	99.3
CIS.SWE.AAS	1	.0	.0	99.3

Credit Program

		Frequency	Percent	Valid Percent	Cumulative Percent
Valid	CIS.SWE.CT	1	.0	.0	99.3
	MHS.AAS	1	.0	.0	99.3
	EMS.CA	1	.0	.0	99.4
	MUS.PIN.ALA	1	.0	.0	99.4
	FFT.CT	1	.0	.0	99.4
	CAD.VDO.CT	1	.0	.0	99.4
	EMT.CT	1	.0	.0	99.4
	CIM.NUC.AAS	1	.0	.0	99.5
	MET.CT	1	.0	.0	99.5
	NUR.TPN.AASX	1	.0	.0	99.5
	MTT.CNC.AAS	1	.0	.0	99.5
	MSM.MMP.AAS	1	.0	.0	99.5
	MUS.CT	1	.0	.0	99.6
	MSM.MMA.AAS	1	.0	.0	99.6
	CRJ.LAW.CT	1	.0	.0	99.6
	GRA.ILL.AAS	1	.0	.0	99.6
	LTA.AAS	1	.0	.0	99.6
	MGT.RFB.AAS	1	.0	.0	99.7
	MGT.SBO.AAS	1	.0	.0	99.7
	ROB.AUT.CT	1	.0	.0	99.7
	MGT.ADO.AAS	1	.0	.0	99.7
	EXS.BUS.AASX	1	.0	.0	99.7
	END.AAS	1	.0	.0	99.8
	LST.AAS	1	.0	.0	99.8
	IND.IPE.AAS	1	.0	.0	99.8
	PLG.CT	1	.0	.0	99.8
	IND.AAS	1	.0	.0	99.8
	EXS.GRN.AASX	1	.0	.0	99.9
	CAR.NRT.CT	1	.0	.0	99.9
	THE.ALA	1	.0	.0	99.9
	ICM.PRE.ALA	1	.0	.0	99.9
	CAR.PRT.CT	1	.0	.0	99.9
	ETT.ELM.AAS	1	.0	.0	100.0
	MSM.MMT.AAS	1	.0	.0	100.0
	WEL.CT	1	.0	.0	100.0
	Total	5013	100.0	100.0	

Educational Goal

	Frequency	Percent	Valid Percent	Cumulative Percent
Valid Obtain OCC degree or certificate	1889	37.7	37.7	37.7
Transfer after obtaining degree or certificate	1118	22.3	22.3	60.0
Transfer without obtaining degree or certificate	942	18.8	18.8	78.8
Undecided	697	13.9	13.9	92.7
	218	4.3	4.3	97.0
Employment Related Knowledge	113	2.3	2.3	99.3
Gain knowledge unrelated to employment	36	.7	.7	100.0
Total	5013	100.0	100.0	