

COPY

Institutional Research Report



Official Enrollment Report
End of Session, Summer One 2002



OAKLAND
COMMUNITY
COLLEGE

[Faint, illegible text]

COBY



OAKLAND
COMMUNITY
COLLEGE

**Official Enrollment Report
End of Session, Summer One 2002**

**Prepared by:
The Office of Institutional Research
September, 2002**

TABLE OF CONTENTS

End of Session Student Credit Hours

College-wide	4
Auburn Hills	5
Highland Lakes	6
Orchard Ridge	7
Royal Oak	8
Southfield	9

End of Session Student Headcount

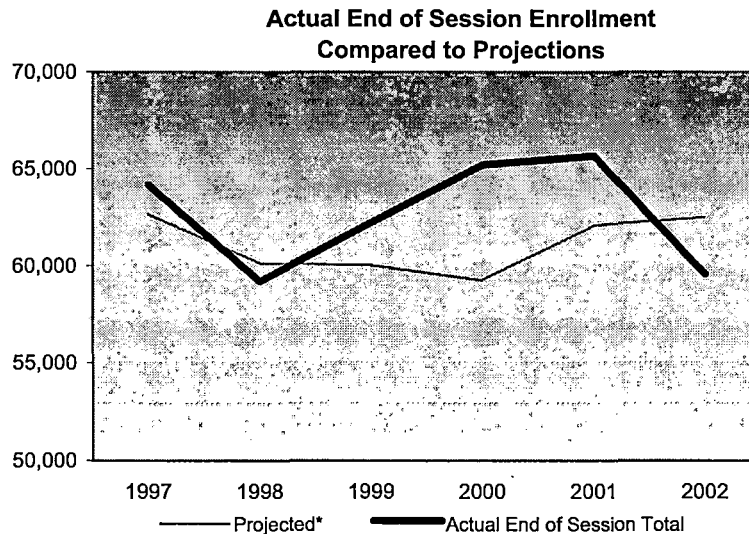
College-wide	10
Auburn Hills	11
Highland Lakes	12
Orchard Ridge	13
Royal Oak	14
Southfield	15

End of Session Student Credit Hours per Student

College-wide	16
Auburn Hills	17
Highland Lakes	18
Orchard Ridge	19
Royal Oak	20
Southfield	21

**Oakland Community College
Official Enrollment Report - Student Credit Hours
Summer One 2002 - End of Session
College-wide**

	<u>1997</u>	<u>1998</u>	<u>1999</u>	<u>2000</u>	<u>2001</u>	<u>2002</u>	<u>1 Year% Change</u>	<u>5 Year% Change</u>
Projected*	62,701	60,159	60,056	59,269	62,108	62,536	0.7%	-0.3%
Actual End of Session Total	64,178	59,201	62,226	65,221	65,671	59,573	-9.3%	-7.2%
% of Projected	102.4%	98.4%	103.6%	110.0%	105.7%	95.3%		
Actual End of Session (Credit)	59,739	57,030	57,392	57,816	61,861	57,934	-6.3%	-3.0%
Actual End of Session (Non Credit)	4,439	2,171	4,834	7,405	3,811	1,639	-57.0%	-63.1%



Summary

The total number of college-wide credit hours for Summer One 2002, End of Session, was 95.3% of the projected total. This represented a one-year decrease of 9.3% and a five-year decrease of 7.2%.

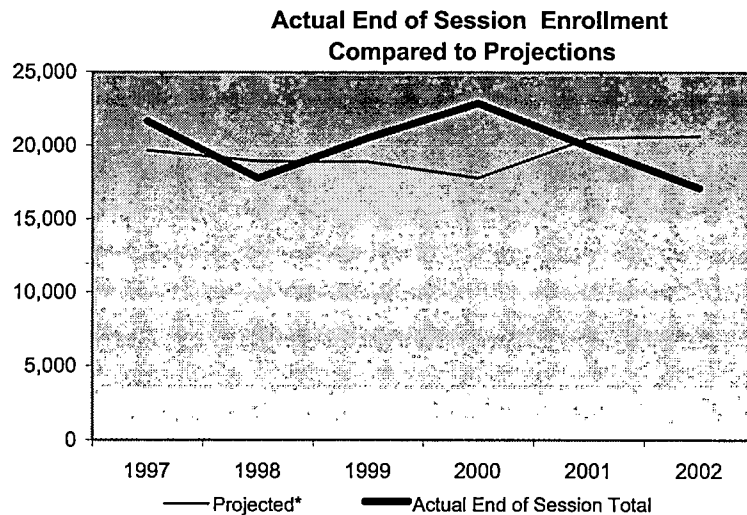
Total hours for credit courses decreased by 6.3% compared to last year and decreased 3% since 1997. For non-credit courses, there were one-year and five-year decreases of 57.0% and 63.1% respectively.

NOTE: Caution should be made when interpreting non-credit figures (non-credit credit hours and non-credit headcount). Please refer to the accompanying memo for detailed information.

*Projections include credit, as well as non-credit courses and reflect estimated end of session targets.

**Oakland Community College
Official Enrollment Report - Student Credit Hours
Summer One 2002 - End of Session
Auburn Hills**

	<u>1997</u>	<u>1998</u>	<u>1999</u>	<u>2000</u>	<u>2001</u>	<u>2002</u>	<u>1 Year% Change</u>	<u>5 Year% Change</u>
Projected*	19,662	18,950	18,917	17,804	20,520	20,661	0.7%	5.1%
Actual End of Session Total	21,661	17,784	20,559	22,859	19,909	17,114	-14.0%	-21.0%
% of Projected	110.2%	93.8%	108.7%	128.4%	97.0%	82.8%		
Actual End of Session (Credit)	18,585	16,957	16,809	16,476	17,057	16,010	-6.1%	-13.9%
Actual End of Session (Non Credit)	3,076	827	3,750	6,383	2,852	1,104	-61.3%	-64.1%



Summary

At the Auburn Hills Campus, the total number of credit hours was 82.8% of the projected total. Total credits decreased by 14.0% compared to last year, and decreased by 21.0% compared to five years ago.

Total hours for credit courses decreased by 6.1% compared to Spring 2001 and decreased by 13.9% compared to Spring 1997. The total number of credit hours for non-credit courses decreased by more than 60% during the same time periods.

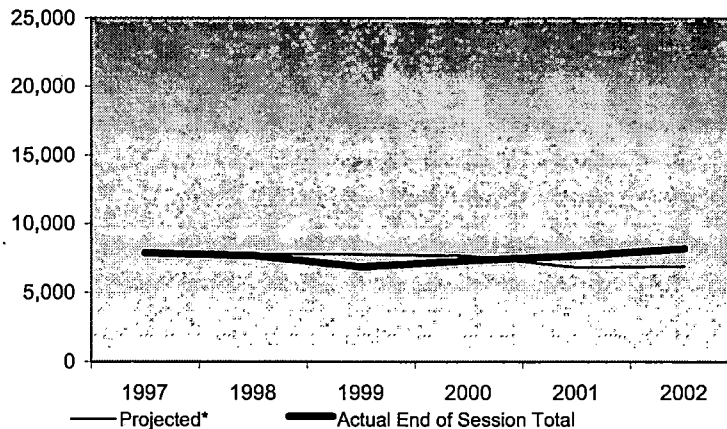
NOTE: Caution should be made when interpreting non-credit figures (non-credit credit hours and non-credit headcount). Please refer to the accompanying memo for detailed information.

*Projections include credit, as well as non-credit courses and reflect estimated end of session targets.

**Oakland Community College
Official Enrollment Report - Student Credit Hours
Summer One 2002 - End of Session
Highland Lakes**

	<u>1997</u>	<u>1998</u>	<u>1999</u>	<u>2000</u>	<u>2001</u>	<u>2002</u>	<u>1 Year% Change</u>	<u>5 Year% Change</u>
Projected*	7,892	7,800	7,787	7,680	6,848	6,895	0.7%	-12.6%
Actual End of Session Total	7,861	7,671	6,861	7,320	7,661	8,201	7.0%	4.3%
% of Projected	99.6%	98.3%	88.1%	95.3%	111.9%	118.9%		
Actual End of Session (Credit)	7,769	7,578	6,783	7,240	7,577	8,201	8.2%	5.6%
Actual End of Session (Non Credit)	92	93	78	80	85	0	-100.0%	-100.0%

**Actual End of Session Enrollment
Compared to Projections**



Summary

Summer One 2002, End of Session credit hours at the Highland Lakes campus exceeded projected totals by 18.9%, representing a one-year increase of 7.0% and a five-year increase of 4.3%.

Total credits for credit courses increased by 8.2% compared to last year, and increased by 5.6% compared to five years ago. There were no hours for non-credit courses at the End of Session, Summer One 2002.

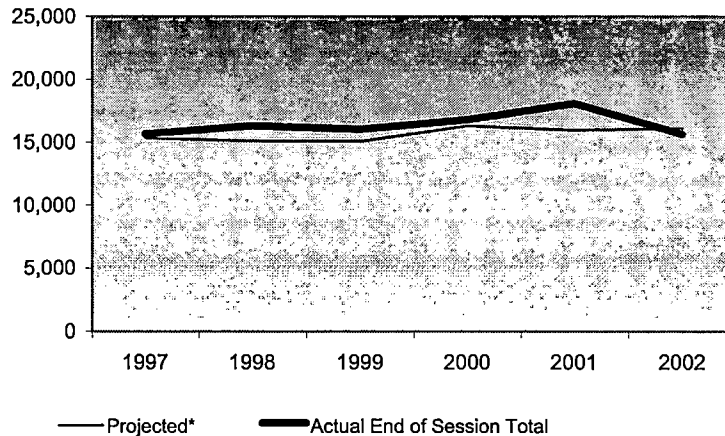
NOTE: Caution should be made when interpreting non-credit figures (non-credit credit hours and non-credit headcount). Please refer to the accompanying memo for detailed information.

*Projections include credit, as well as non-credit courses and reflect estimated end of session targets.

**Oakland Community College
Official Enrollment Report - Student Credit Hours
Summer One 2002 - End of Session
Orchard Ridge**

	<u>1997</u>	<u>1998</u>	<u>1999</u>	<u>2000</u>	<u>2001</u>	<u>2002</u>	<u>1 Year%</u> <u>Change</u>	<u>5 Year%</u> <u>Change</u>
Projected*	15,351	15,130	15,104	16,331	16,008	16,118	0.7%	5.0%
Actual End of Session Total	15,650	16,312	16,038	16,799	18,094	15,667	-13.4%	0.1%
% of Projected	101.9%	107.8%	106.2%	102.9%	113.0%	97.2%		
Actual End of Session (Credit)	14,983	15,106	15,164	16,073	17,340	15,216	-12.2%	1.6%
Actual End of Session (Non Credit)	667	1,206	874	726	754	451	-40.2%	-32.4%

**Actual End of Session Enrollment
Compared to Projections**



Summary

At the Orchard Ridge campus, total credit hours for End of Session, Summer One 2002, were 97.2% of the projected total. This represented a decrease of 13.4% compared to last year and .1% increase since 1997.

Compared to Spring 2001, Summer One 2002, End of Session, hours for credit courses decreased by 12.2%, while total hours for non-credit courses decreased by 40.2%. Compared to Spring 1997, total hours for credit courses increased by 1.6% while hours for non-credit courses decreased by 32.4%.

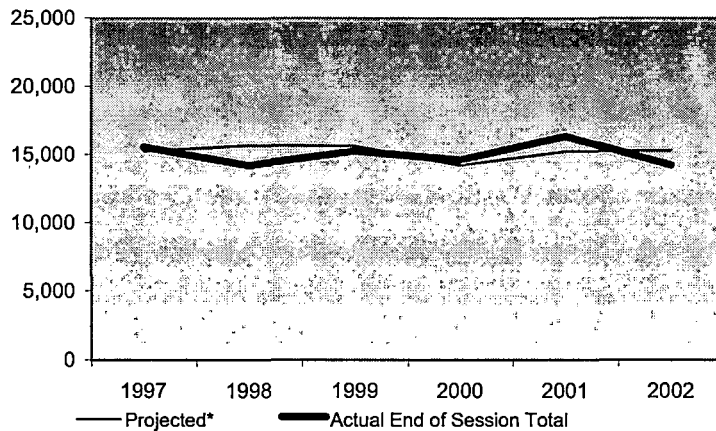
NOTE: Caution should be made when interpreting non-credit figures (non-credit credit hours and non-credit headcount). Please refer to the accompanying memo for detailed information.

*Projections include credit, as well as non-credit courses and reflect estimated end of session targets.

**Oakland Community College
Official Enrollment Report - Student Credit Hours
Summer One 2002 - End of Session
Royal Oak**

	<u>1997</u>	<u>1998</u>	<u>1999</u>	<u>2000</u>	<u>2001</u>	<u>2002</u>	<u>1 Year%</u> <u>Change</u>	<u>5 Year%</u> <u>Change</u>
Projected*	15,243	15,682	15,655	14,222	15,216	15,321	0.7%	0.5%
Actual End of Session Total	15,549	14,206	15,245	14,615	16,333	14,230	-12.9%	-8.5%
% of Projected	102.0%	90.6%	97.4%	102.8%	107.3%	92.9%		
Actual End of Session (Credit)	15,545	14,206	15,245	14,615	16,333	14,230	-12.9%	-8.5%
Actual End of Session (Non Credit)	4	0	0	0	0	0		

**Actual End of Session Enrollment
Compared to Projections**



Summary

At the Royal Oak Campus, the total number of credit hours was 92.9% of the projected total. Total credits decreased by 12.9% compared to last year, and decreased by 8.5% compared to five years ago.

As in previous years, there were no hours for non-credit courses.

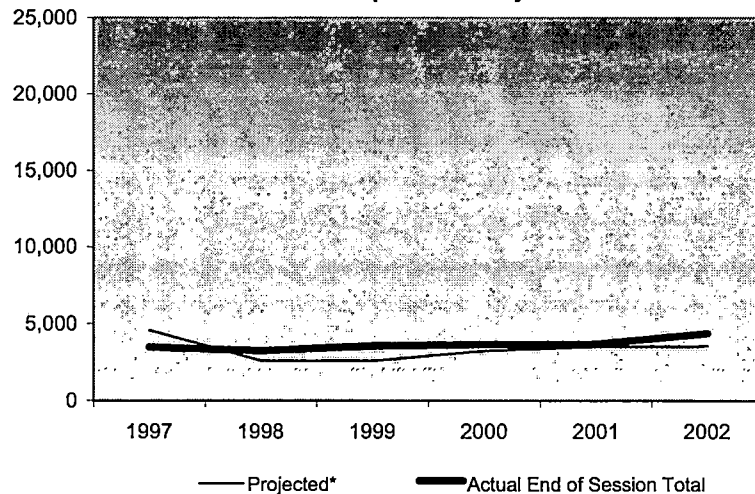
NOTE: Caution should be made when interpreting non-credit figures (non-credit credit hours and non-credit headcount). Please refer to the accompanying memo for detailed information.

*Projections include credit, as well as non-credit courses and reflect estimated end of session targets.

**Oakland Community College
Official Enrollment Report - Student Credit Hours
Summer One 2002 - End of Session
Southfield**

	<u>1997</u>	<u>1998</u>	<u>1999</u>	<u>2000</u>	<u>2001</u>	<u>2002</u>	<u>1 Year%</u> <u>Change</u>	<u>5 Year%</u> <u>Change</u>
Projected*	4,553	2,597	2,593	3,232	3,516	3,541	0.7%	-22.2%
Actual End of Session Total	3,457	3,228	3,523	3,628	3,674	4,361	18.7%	26.1%
% of Projected	75.9%	124.3%	135.9%	112.3%	104.5%	123.2%		
Actual End of Session (Credit)	2,857	3,183	3,391	3,412	3,554	4,277	20.3%	49.7%
Actual End of Session (Non Credit)	600	45	132	216	120	84	-30.0%	-86.0%

**Actual End of Session Enrollment
Compared to Projections**



Summary

End of Session credit hours for Summer One 2002 exceeded projected totals by 23.2% at the Southfield campus. Credit hours increased by 18.7% compared to last year and increased by 26.1% compared to five years ago.

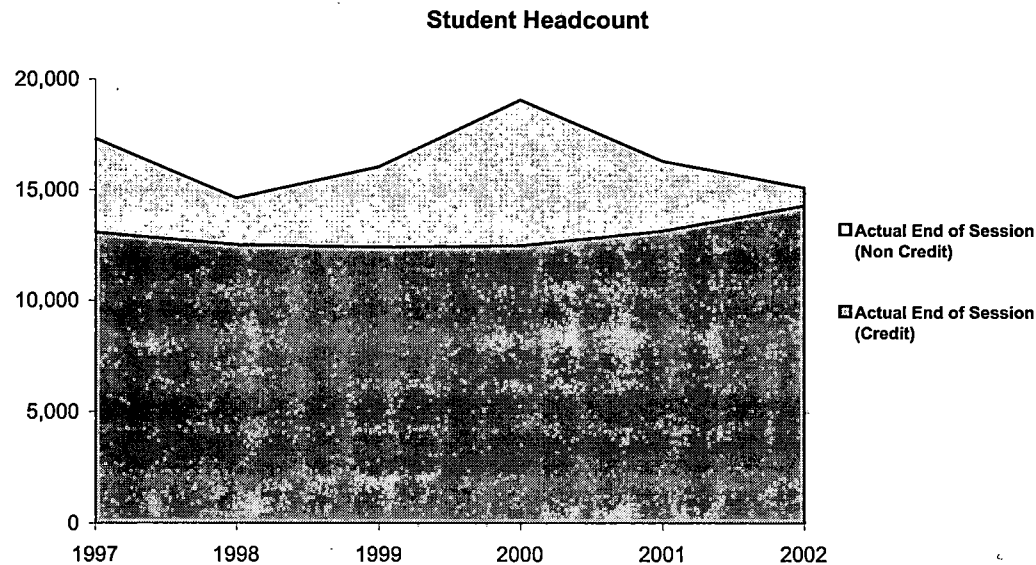
This growth is attributable to the increase in hours for credit courses, with one-year and five-year increases of 20.3% and 49.7% respectively. Non-credit courses experienced a one-year decrease in total hours by 30.0% and a five-year decrease of 86.0%.

NOTE: Caution should be made when interpreting non-credit figures (non-credit credit hours and non-credit headcount). Please refer to the accompanying memo for detailed information.

*Projections include credit, as well as non-credit courses and reflect estimated end of session targets.

**Oakland Community College
Official Enrollment Report - Student Headcount
Summer One 2002 - End of Session
College-wide**

	<u>1997</u>	<u>1998</u>	<u>1999</u>	<u>2000</u>	<u>2001</u>	<u>2002</u>	<u>1 Year% Change</u>	<u>5 Year% Change</u>
Projected Headcount	15,950	12,981	14,660	14,660	16,020	19,000	18.6%	19.1%
Actual End of Session (Credit)	13,090	12,541	12,417	12,494	13,153	14,299	8.7%	9.2%
Actual End of Session (Non Credit)	4,240	2,102	3,633	6,576	3,166	822	-74.0%	-80.6%
Actual End of Session Total	17,330	14,643	16,050	19,070	16,319	15,121	-7.3%	-12.7%
% of Projected Headcount	108.7%	112.8%	109.5%	130.1%	101.9%	79.6%		



Summary

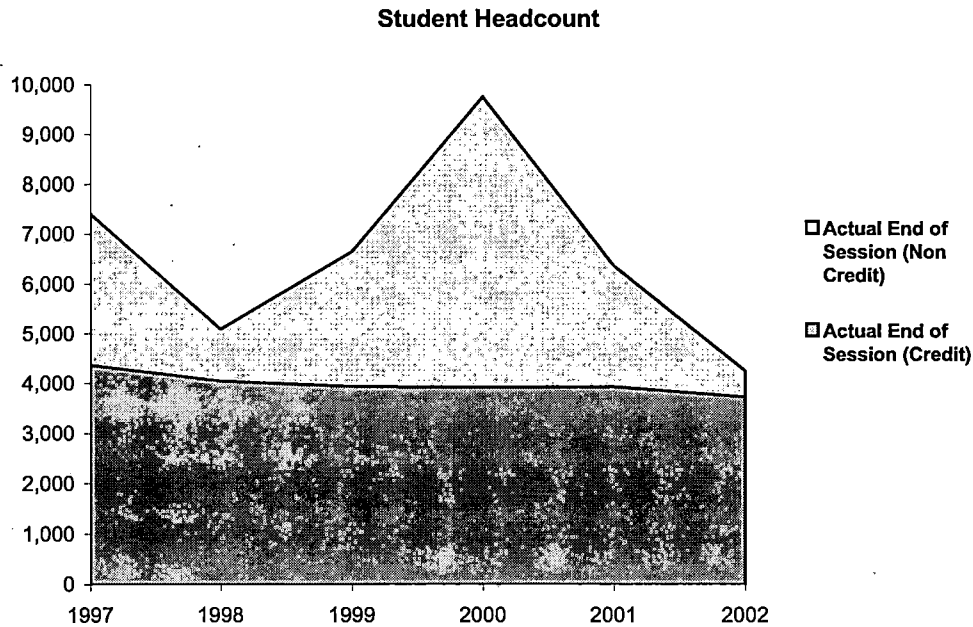
Summer One 2002, End of Session college-wide headcount was 79.6% of the projected total. There was a one-year decrease of 7.3% and a five-year decrease of 12.7%.

These decreases are attributable to the decreases in headcount in non-credit courses. Non-credit courses experienced a one-year decrease of 74.0% and a five-year decrease of 80.6%, while credit courses experienced one-year and five-year increases of 8.7% and 9.2% respectively.

NOTE: Caution should be made when interpreting non-credit figures (non-credit credit hours and non-credit headcount). Please refer to the accompanying memo for detailed information.

**Oakland Community College
 Official Enrollment Report - Student Headcount
 Summer One 2002 - End of Session
 Auburn Hills**

	<u>1997</u>	<u>1998</u>	<u>1999</u>	<u>2000</u>	<u>2001</u>	<u>2002</u>	<u>1 Year%</u> <u>Change</u>	<u>5 Year%</u> <u>Change</u>
Actual End of Session (Credit)	4,375	4,058	3,947	3,929	3,942	3,734	-5.3%	-14.7%
Actual End of Session (Non Credit)	3,036	1,039	2,703	5,832	2,428	530	-78.2%	-82.5%
Actual End of Session Total	7,411	5,097	6,650	9,761	6,370	4,264	-33.1%	-42.5%



Summary

At the Auburn Hills campus, Summer One 2002, End of Session headcount in credit courses decreased by 5.3% compared to Spring 2001, and decreased by 14.7% compared to Spring 1997.

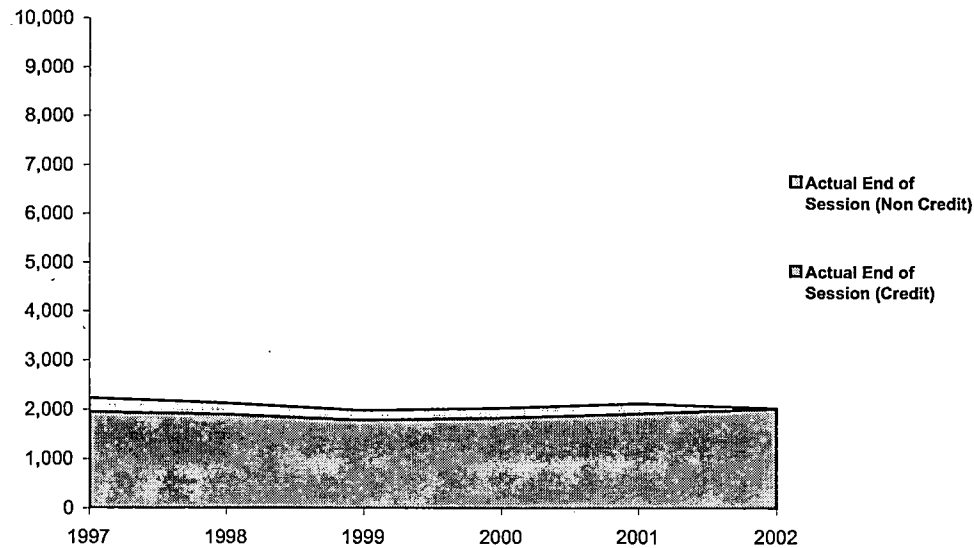
Headcount in non-credit courses decreased by 78.2% compared to last year, and decreased by 82.5% compared to five years ago.

NOTE: Caution should be made when interpreting non-credit figures (non-credit credit hours and non-credit headcount). Please refer to the accompanying memo for detailed information.

**Oakland Community College
Official Enrollment Report - Student Headcount
Summer One 2002 - End of Session
Highland Lakes**

	<u>1997</u>	<u>1998</u>	<u>1999</u>	<u>2000</u>	<u>2001</u>	<u>2002</u>	<u>1 Year% Change</u>	<u>5 Year% Change</u>
Actual End of Session (Credit)	1,963	1,907	1,788	1,842	1,921	2,028	5.6%	3.3%
Actual End of Session (Non Credit)	278	225	197	200	204	0	-100.0%	-100.0%
Actual End of Session Total	2,241	2,132	1,985	2,042	2,125	2,028	-4.6%	-9.5%

Student Headcount



Summary

For Summer One 2002, End of Session, the Highland Lakes Campus experienced a one-year increase of 5.6% and a five-year increase of 3.3% in headcount for credit courses.

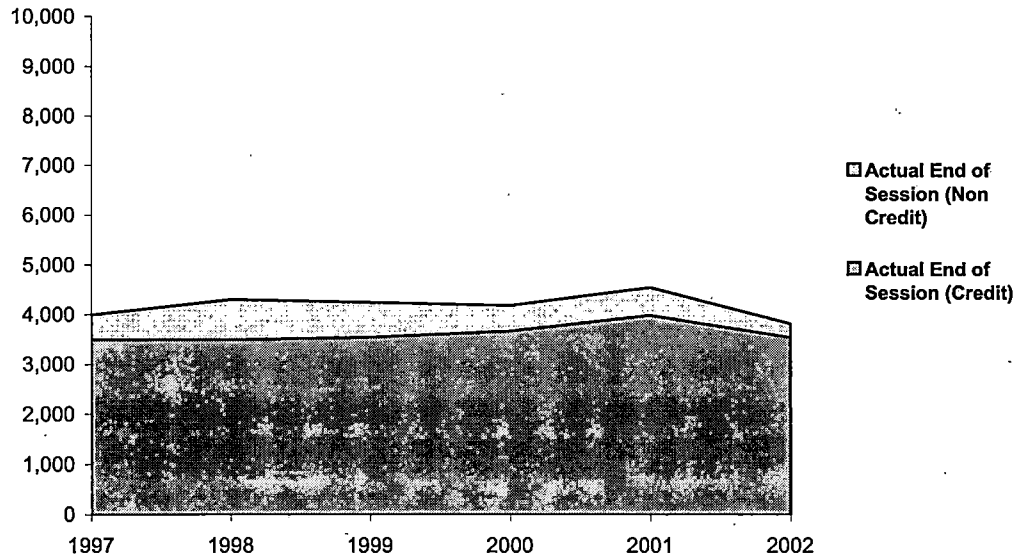
There were no students enrolled in non-credit courses at the Highland Lakes campus at the End of Session for Summer One 2002.

NOTE: Caution should be made when interpreting non-credit figures (non-credit credit hours and non-credit headcount). Please refer to the accompanying memo for detailed information.

**Oakland Community College
 Official Enrollment Report - Student Headcount
 Summer One 2002 - End of Session
 Orchard Ridge**

	<u>1997</u>	<u>1998</u>	<u>1999</u>	<u>2000</u>	<u>2001</u>	<u>2002</u>	<u>1 Year% Change</u>	<u>5 Year% Change</u>
Actual End of Session (Credit)	3,498	3,494	3,550	3,673	3,987	3,544	-11.1%	1.3%
Actual End of Session (Non Credit)	499	816	703	514	564	278	-50.7%	-44.3%
Actual End of Session Total	3,997	4,310	4,253	4,187	4,551	3,822	-16.0%	-4.4%

Student Headcount



Summary

For Summer One 2002, End of Session, headcount in credit courses at the Orchard Ridge campus decreased by 11.1% compared to Spring 2001. However headcount increased by 1.3% compared to Spring 1997.

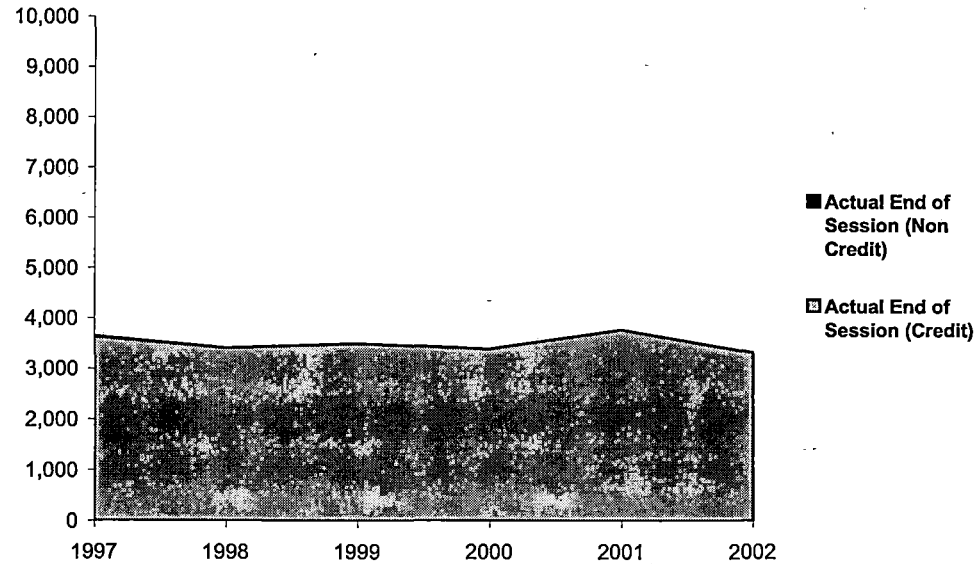
Orchard Ridge Summer One 2002, End of Session headcount in non-credit courses decreased by 50.7% compared to Spring 2001, and decreased by 44.3% compared to Spring 1997.

NOTE: Caution should be made when interpreting non-credit figures (non-credit credit hours and non-credit headcount). Please refer to the accompanying memo for detailed information.

**Oakland Community College
 Official Enrollment Report - Student Headcount
 Summer One 2002 - End of Session
 Royal Oak**

	<u>1997</u>	<u>1998</u>	<u>1999</u>	<u>2000</u>	<u>2001</u>	<u>2002</u>	<u>1 Year% Change</u>	<u>5 Year% Change</u>
Actual End of Session (Credit)	3,642	3,421	3,507	3,404	3,778	3,330	-11.9%	8.6%
Actual End of Session (Non Credit)	8	0	0	0	0	0	-	-100.0%
Actual End of Session Total	3,650	3,421	3,507	3,404	3,778	3,330	-11.9%	-8.8%

Student Headcount



Summary

Summer One 2002, End of Session headcount at the Royal Oak campus was 11.9% lower than Spring 2001, and was 8.6% higher than Spring 1997.

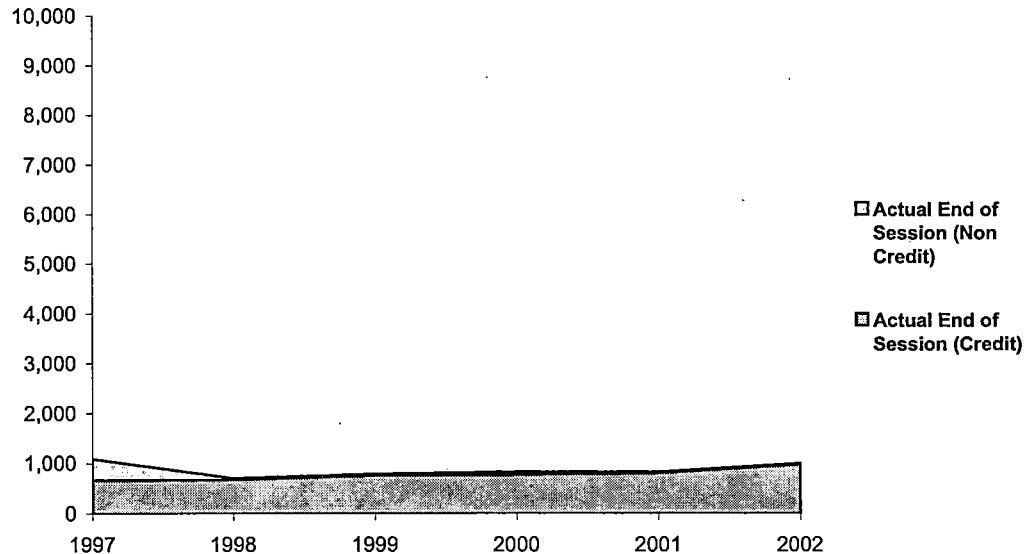
As in previous years, the headcount was zero for non-credit courses.

NOTE: Caution should be made when interpreting non-credit figures (non-credit credit hours and non-credit headcount). Please refer to the accompanying memo for detailed information.

**Oakland Community College
Official Enrollment Report - Student Headcount
Summer One 2002 - End of Session
Southfield**

	<u>1997</u>	<u>1998</u>	<u>1999</u>	<u>2000</u>	<u>2001</u>	<u>2002</u>	<u>1 Year% Change</u>	<u>5 Year% Change</u>
Actual End of Session (Credit)	675	687	764	785	815	992	21.7%	47.0%
Actual End of Session (Non Credit)	421	24	30	50	15	14	-6.7%	-96.7%
Actual End of Session Total	1,096	711	794	835	830	1,006	21.2%	-8.2%

Student Headcount



Summary

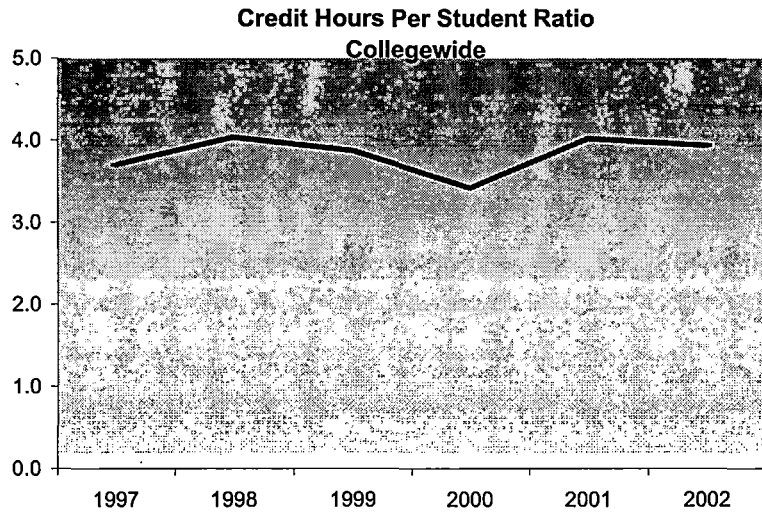
At the Southfield campus for Summer One 2002, End of Session, headcount in credit courses increased by 21.7% compared to last year, and increased by 47.0% compared to five years ago.

Summer One 2002, End of Session non-credit headcount decreased by one student (or 6.7%) compared to Spring 2001. It decreased by 96.7% compared to Spring 1997.

NOTE: Caution should be made when interpreting non-credit figures (non-credit credit hours and non-credit headcount). Please refer to the accompanying memo for detailed information.

**Oakland Community College
 Official Enrollment Report - Credit Hours Per Student
 Summer One 2002 - End of Session
 College-wide**

	<u>1997</u>	<u>1998</u>	<u>1999</u>	<u>2000</u>	<u>2001</u>	<u>2002</u>	<u>1 Year % Change</u>	<u>5 Year % Change</u>
End of Session Total Credit Hours	64,178	59,201	62,226	65,221	65,671	59,573	-9.3%	-7.2%
End of Session Total Headcount	17,330	14,643	16,050	19,070	16,319	15,121	-7.3%	-12.7%
Credit Hours Per Student	3.70	4.04	3.88	3.42	4.02	3.94	-2.1%	6.4%



Summary

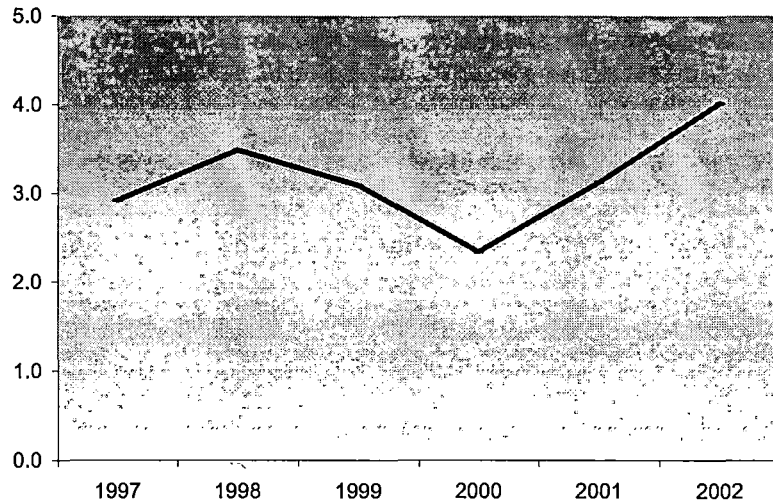
As of Summer One 2002, End of Session, the college-wide average number of credit hours per student was 3.94. College-wide credit hours per student has decreased by 2.1% since Spring 2001, but has increased 6.4% since 1997.

NOTE: Caution should be made when interpreting non-credit figures (non-credit credit hours and non-credit headcount). Please refer to the accompanying memo for detailed information.

**Oakland Community College
 Official Enrollment Report - Credit Hours Per Student
 Summer One 2002 - End of Session
 Auburn Hills**

	<u>1997</u>	<u>1998</u>	<u>1999</u>	<u>2000</u>	<u>2001</u>	<u>2002</u>	<u>1 Year % Change</u>	<u>5 Year % Change</u>
End of Session Total Credit Hours	21,661	17,784	20,559	22,859	19,909	17,114	-14.0%	-21.0%
End of Session Total Headcount	7,411	5,097	6,650	9,761	6,370	4,264	-33.1%	-42.5%
Credit Hours Per Student	2.92	3.49	3.09	2.34	3.13	4.01	28.4%	37.3%

**Credit Hours Per Student Ratio
 Auburn Hills**



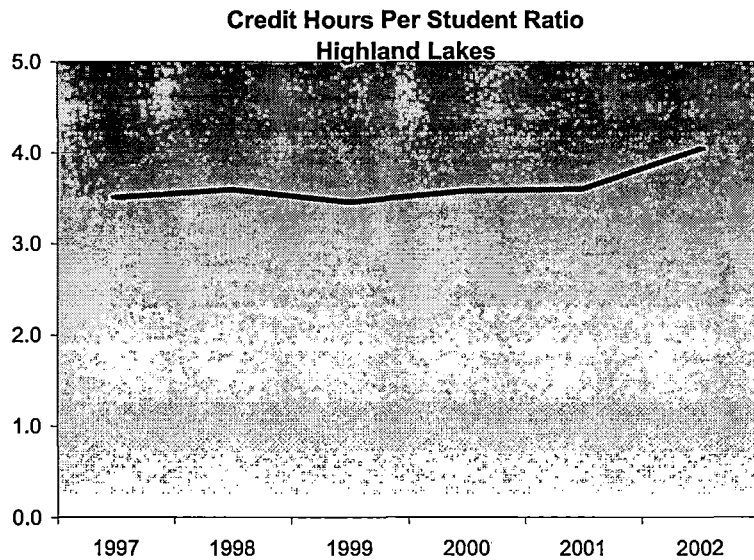
Summary

Credit hours per student at the Auburn Hills Campus were 4.01 for Summer One 2002, End of Session. This is a 28.4% increase from last year, and a 37.3% increase from 1997.

NOTE: Caution should be made when interpreting non-credit figures (non-credit credit hours and non-credit headcount). Please refer to the accompanying memo for detailed information.

**Oakland Community College
 Official Enrollment Report - Credit Hours Per Student
 Summer One 2002 - End of Session
 Highland Lakes**

	<u>1997</u>	<u>1998</u>	<u>1999</u>	<u>2000</u>	<u>2001</u>	<u>2002</u>	<u>1 Year % Change</u>	<u>5 Year % Change</u>
End of Session Total Credit Hours	7,861	7,671	6,861	7,320	7,661	8,201	7.0%	4.3%
End of Session Total Headcount	2,241	2,132	1,985	2,042	2,125	2,028	-4.6%	-9.5%
Credit Hours Per Student	3.51	3.60	3.46	3.58	3.61	4.04	12.2%	15.3%



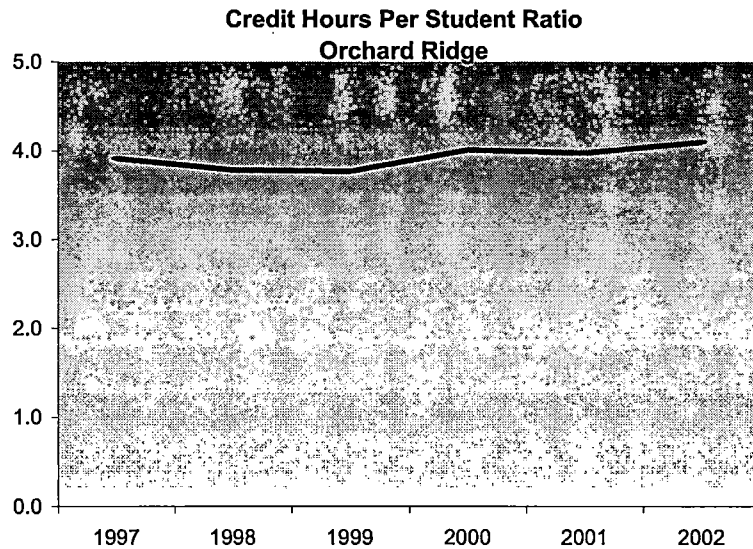
Summary

Credit hours per student at the Highland Lakes Campus were 4.04 for Summer One 2002, End of Session. This is a 12.2% increase from last year, and a 15.3% increase from 1997.

NOTE: Caution should be made when interpreting non-credit figures (non-credit credit hours and non-credit headcount). Please refer to the accompanying memo for detailed information.

**Oakland Community College
 Official Enrollment Report - Credit Hours Per Student
 Summer One 2002 - End of Session
 Orchard Ridge**

	<u>1997</u>	<u>1998</u>	<u>1999</u>	<u>2000</u>	<u>2001</u>	<u>2002</u>	<u>1 Year % Change</u>	<u>5 Year % Change</u>
End of Session Total Credit Hours	15,650	16,312	16,038	16,799	18,094	15,667	-13.4%	0.1%
End of Session Total Headcount	3,997	4,310	4,253	4,187	4,551	3,822	-16.0%	-4.4%
Credit Hours Per Student	3.92	3.78	3.77	4.01	3.98	4.10	3.1%	4.7%



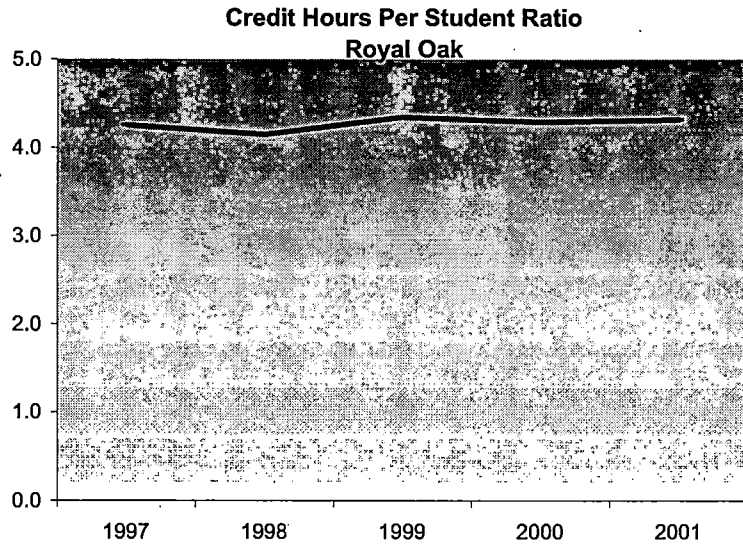
Summary

Credit hours per student at the Orchard Ridge Campus were 4.1 for Summer One 2002, End of Session. This is a 3.1% increase from last year, and a 4.7% increase from 1997.

NOTE: Caution should be made when interpreting non-credit figures (non-credit credit hours and non-credit headcount). Please refer to the accompanying memo for detailed information.

**Oakland Community College
 Official Enrollment Report - Credit Hours Per Student
 Summer One 2002 - End of Session
 Royal Oak**

	<u>1997</u>	<u>1998</u>	<u>1999</u>	<u>2000</u>	<u>2001</u>	<u>2002</u>	<u>1 Year % Change</u>	<u>5 Year % Change</u>
End of Session Total Credit Hours	15,549	14,206	15,245	14,615	16,333	14,230	-12.9%	-8.5%
End of Session Total Headcount	3,650	3,421	3,507	3,404	3,778	3,330	-11.9%	-8.8%
Credit Hours Per Student	4.26	4.15	4.35	4.29	4.32	4.27	-1.2%	0.3%



Summary

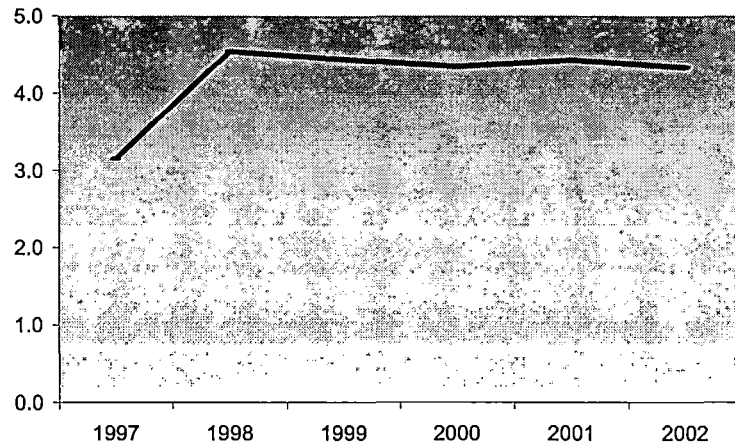
Credit hours per student at the Royal Oak Campus were 4.27 for Summer One 2002, End of Session. This is a 1.2% decrease from last year, and a .3% increase from 1997.

NOTE: Caution should be made when interpreting non-credit figures (non-credit credit hours and non-credit headcount). Please refer to the accompanying memo for detailed information.

**Oakland Community College
Official Enrollment Report - Credit Hours Per Student
Summer One 2002 - End of Session
Southfield**

	<u>1997</u>	<u>1998</u>	<u>1999</u>	<u>2000</u>	<u>2001</u>	<u>2002</u>	<u>1 Year % Change</u>	<u>5 Year % Change</u>
End of Session Total Credit Hours	3,457	3,228	3,523	3,628	3,674	4,361	18.7%	26.1%
End of Session Total Headcount	1,096	711	794	835	830	1,006	21.2%	-8.2%
Credit Hours Per Student	3.15	4.54	4.44	4.34	4.43	4.33	-2.1%	37.4%

**Credit Hours Per Student Ratio
Southfield**



Summary

Credit hours per student at the Southfield campus were 4.33 for Summer One 2002, End of Session. This is a 2.1% decrease from last year, and a 37.4% increase from 1997.

NOTE: Caution should be made when interpreting non-credit figures (non-credit credit hours and non-credit headcount). Please refer to the accompanying memo for detailed information.