

# Frequencies

## Statistics

**LOOKJOB** How long did you look for work after your degree or certificate?

N	Valid	735
	Missing	1026

**LOOKJOB** How long did you look for work after your degree or certificate?

		Frequency	Percent	Valid Percent	Cumulative Percent
Valid	0 I had this job before Graduation	550	31.2	74.8	74.8
	1 I had this job within one month of Graduation	74	4.2	10.1	84.9
	2	18	1.0	2.4	87.3
	3	19	1.1	2.6	89.9
	4	19	1.1	2.6	92.5
	5	12	.7	1.6	94.1
	6	13	.7	1.8	95.9
	7	2	.1	.3	96.2
	8	10	.6	1.4	97.6
	9	4	.2	.5	98.1
	10	4	.2	.5	98.6
	12	8	.5	1.1	99.7
	18	1	.1	.1	99.9
	24	1	.1	.1	100.0
	Total	735	41.7	100.0	
Missing	99	213	12.1		
	System	813	46.2		
	Total	1026	58.3		
Total		1761	100.0		

Includes dates

12.20.99

5.1.00

6.28.00

8.21.00

but 90 (11 = 1998  
- 1999 academic  
year)

## Statistics

*SALARY Annual Salary of OCC Graduate*

N	Valid	625
	Missing	1136
Mean		28108.80

# Frequencies

## Statistics

*RETURN1 Attended Another College or Returned to OCC?*

N	Valid	931
	Missing	830
Mean		.68

**RETURN1 Attended Another College or Returned to OCC?**

		Frequency	Percent	Valid Percent	Cumulative Percent
Valid	0 Not Attended A College Since Graduation	426	24.2	45.8	45.8
	1 Attended Another College	375	21.3	40.3	86.0
	2 Attended OCC	130	7.4	14.0	100.0
	Total	931	52.9	100.0	
Missing	9	17	1.0		
	System	813	46.2		
	Total	830	47.1		
Total		1761	100.0		

> likely to attend O.U. N=77

# Frequencies

## Statistics

EMPSTAT What is your employment status?

N	Valid	930
	Missing	831
Mean		1.73

EMPSTAT What is your employment status?

		Frequency	Percent	Valid Percent	Cumulative Percent
Valid	0 Self-employed	25	1.4	2.7	2.7
	1 Employed full time	578	32.8	62.2	64.8
	2 Employed part time	186	10.6	20.0	84.8
	3 Military Service	2	.1	.2	85.1
	4 Unemployed, seeking employment	42	2.4	4.5	89.6
	5 Unemployed, not seeking employment	97	5.5	10.4	100.0
	Total	930	52.8	100.0	
Missing	9	18	1.0		
	System	813	46.2		
	Total	831	47.2		
Total	1761	100.0			

7.9%

# Frequencies

## Statistics

JOBRELA To What Extent is Your Job related to your OCC degree/certificate?

N	Valid	776
	Missing	985

1/ of grads employed 1 year after degree 93%

JOBRELA To What Extent is Your Job related to your OCC degree/certificate?

		Frequency	Percent	Valid Percent	Cumulative Percent
Valid	0	73	4.1	9.4	9.4
	1 Not at all Related	206	11.7	26.5	36.0
	2 Somewhat Related	193	11.0	24.9	60.8
	3 Highly Related	270	15.3	34.8	95.6
	4	6	.3	.8	96.4
	5	21	1.2	2.7	99.1
	6	4	.2	.5	99.6
	7	3	.2	.4	100.0
	Total	776	44.1	100.0	
Missing	8 Not Applicable	8	.5		
	9	164	9.3		
	System	813	46.2		
	Total	985	55.9		
Total		1761	100.0		

11.  
15.3  
-----  
26.3%

# Frequencies

## Statistics

LOOKJOB How long did you look for work after your degree or certificate?

N	Valid	1337
	Missing	2054

LOOKJOB How long did you look for work after your degree or certificate?

		Frequency	Percent	Valid Percent	Cumulative Percent
Valid	0 I had this job before Graduation	992	29.3	74.2	74.2
	1 I had this job within one month of Graduation	165	4.9	12.3	86.5
	2	27	.8	2.0	88.6
	3	31	.9	2.3	90.9
	4	29	.9	2.2	93.0
	5	20	.6	1.5	94.5
	6	24	.7	1.8	96.3
	7	6	.2	.4	96.8
	8	15	.4	1.1	97.9
	9	8	.2	.6	98.5
	10	5	.1	.4	98.9
	11	1	.0	.1	99.0
	12	11	.3	.8	99.8
	18	1	.0	.1	99.9
	24	1	.0	.1	99.9
	34	1	.0	.1	100.0
	Total	1337	39.4	100.0	
Missing	88 Not Applicable	29	.9		
	99	405	11.9		
	System	1620	47.8		
	Total	2054	60.6		
Total		3391	100.0		

All dates. (w/ 11 academic year 1998-1999)

# Frequencies

## Statistics

*SALARY Annual Salary of OCC Graduate*

N	Valid	1197
	Missing	2194
Mean		30322.47

**SALARY Annual Salary of OCC Graduate**

		Frequency	Percent	Valid Percent	Cumulative Percent
Valid	200	2	.1	.2	.2
	300	1	.0	.1	.3
	600	1	.0	.1	.3
	700	1	.0	.1	.4
	790	1	.0	.1	.5
	832	1	.0	.1	.6
	944	1	.0	.1	.7
	950	2	.1	.2	.8
	1000	3	.1	.3	1.1
	1200	4	.1	.3	1.4
	1300	1	.0	.1	1.5
	1400	2	.1	.2	1.7
	1500	6	.2	.5	2.2
	1560	1	.0	.1	2.3
	1600	2	.1	.2	2.4
	2000	8	.2	.7	3.1
	2059	1	.0	.1	3.2
	2100	1	.0	.1	3.3
	2200	1	.0	.1	3.3
	2300	3	.1	.3	3.6
	2457	1	.0	.1	3.7
	2500	6	.2	.5	4.2
	2600	4	.1	.3	4.5
	2800	2	.1	.2	4.7
	3000	10	.3	.8	5.5
	3100	1	.0	.1	5.6
3200	4	.1	.3	5.9	
3300	3	.1	.3	6.2	
3350	1	.0	.1	6.3	

# Frequencies

## Statistics

*RETURN1 Attended Another College or Returned to OCC?*

N	Valid	1726
	Missing	1665

**RETURN1 Attended Another College or Returned to OCC?**

		Frequency	Percent	Valid Percent	Cumulative Percent
Valid	0 Not Attended A College Since Graduation	846	24.9	49.0	49.0
	1 Attended Another College	632	18.6	36.6	85.6
	2 Attended OCC	248	7.3	14.4	100.0
	Total	1726	50.9	100.0	
Missing	9	45	1.3		
	System	1620	47.8		
	Total	1665	49.1		
Total		3391	100.0		



2 data sets

11 = 1998 - 1999 school year

**Frequencies**

**Statistics**

**JOBRELA To What Extent is Your Job related to your OCC degree/certificate?**

✓ of grads employed 1 year after degree.

N	Valid	1464
	Missing	1927

**JOBRELA To What Extent is Your Job related to your OCC degree/certificate?**

		Frequency	Percent	Valid Percent	Cumulative Percent
Valid	0	74	2.2	5.1	5.1
	1 Not at all Related	421	12.4	28.8	33.8
	2 Somewhat Related	375	11.1	25.6	59.4
	3 Highly Related	560	16.5	38.3	97.7
	4	6	.2	.4	98.1
	5	21	.6	1.4	99.5
	6	4	.1	.3	99.8
	7	3	.1	.2	100.0
	Total	1464	43.2	100.0	
Missing	8 Not Applicable	36	1.1		
	9	271	8.0		
	System	1620	47.8		
	Total	1927	56.8		
Total		3391	100.0		

11.1  
16.5  

---

27.6%

# Frequencies

## Statistics

SCHATT Name of College Attended

N	Valid	648
	Missing	2743

### SCHATT Name of College Attended

		Frequency	Percent	Valid Percent	Cumulative Percent
Valid	260	1	.0	.2	.2
	694	1	.0	.2	.3
	711	2	.1	.3	.6
	734 FLORIDA STATE UNIVERSITY	1	.0	.2	.8
	902 UNIVERSITY OF HAWAII AT MANOA	1	.0	.2	.9
	1278	1	.0	.2	1.1
	1386	1	.0	.2	1.2
	1968 CALVIN	5	.1	.8	2.0
	1972 CENTRAL MICHIGAN UNIVERSITY	22	.6	3.4	5.4
	1974 CLEARY COLLEGE	6	.2	.9	6.3
	1980 WILLIAM TYNDALE COLLEGE (DETROIT BIBLE)	2	.1	.3	6.6
	1981 DAVENPORT COLLEGE OF BUSINESS	4	.1	.6	7.3
	1987 DETROIT COLLEGE OF BUSINESS	3	.1	.5	7.7
	1990 EASTERN MICHIGAN UNIVERSITY	33	1.0	5.1	12.8
	1994 FERRIS STATE COLLEGE	2	.1	.3	13.1
	1996 MOTT COMMUNITY COLLEGE - FLINT JR. - GENESEE	1	.0	.2	13.3
	2005 GRAND VALLEY STATE	2	.1	.3	13.6
	2006 HENRY FORD COMMUNITY COLLEGE	3	.1	.5	14.0
2012 HOPE COLLEGE	2	.1	.3	14.4	

SCHATT Name of College Attended

	Frequency	Percent	Valid Percent	Cumulative Percent
2019 LANSING COMMUNITY COLLEGE	1	.0	.2	14.5
2020 LAWRENCE INSTITUTE OF TECHNOLOGY	15	.4	2.3	16.8
2022 MADONNA COLLEGE	25	.7	3.9	20.7
2024 MARYGROVE COLLEGE	14	.4	2.2	22.8
2032 MICHIGAN STATE UNIVERSITY	12	.4	1.9	24.7
2033 OAKLAND UNIVERSITY	146	4.3	22.5	47.2
2038 NORTHERN MICHIGAN UNIVERSITY	2	.1	.3	47.5
2041 NORTHWOOD INSTITUTE	4	.1	.6	48.1
2043 OAKLAND COMMUNITY COLLEGE-AUBURN HILLS CAMPUS	5	.1	.8	48.9
2052 SIENA HEIGHTS COLLEGE	5	.1	.8	49.7
2054 MACOMB COMMUNITY COLLEGE	5	.1	.8	50.5
2055 SOUTHWESTERN MICHIGAN COLLEGE	1	.0	.2	50.6
2056 SPRING ARBOR COLLEGE	9	.3	1.4	52.0
2057 SAGINAW VALLEY STATE COLLEGE	3	.1	.5	52.5
2060 UNIVERSITY OF DETROIT	14	.4	2.2	54.6
2062 UNIVERSITY OF MICHIGAN	10	.3	1.5	56.2
2063 UNIVERSITY OF MICHIGAN - FLINT COLLEGE	24	.7	3.7	59.9
2064 WAYNE STATE UNIVERSITY	95	2.8	14.7	74.5
2065 WALSH COLLEGE	58	1.7	9.0	83.5
2066 WESTERN MICHIGAN UNIVERSITY	7	.2	1.1	84.6

Valid

**SCHATT Name of College Attended**

		Frequency	Percent	Valid Percent	Cumulative Percent
Valid	2068 WAYNE COUNTY COMMUNITY COLLEGE	3	.1	.5	85.0
	2070 SCHOOLCRAFT COMMUNITY COLLEGE	4	.1	.6	85.6
	2074 UNIVERSITY OF MICHIGAN - DEARBORN	33	1.0	5.1	90.7
	2142	8	.2	1.2	92.0
	2148 SAINT MARYS COLLEGE	1	.0	.2	92.1
	2190	1	.0	.2	92.3
	3279	2	.1	.3	92.6
	3346	1	.0	.2	92.7
	3851	1	.0	.2	92.9
	4011	1	.0	.2	93.1
	4014	1	.0	.2	93.2
	4379	1	.0	.2	93.4
	4658	1	.0	.2	93.5
	5570 UNIVERSITY OF PHOENIX	8	.2	1.2	94.8
	7019 NATIONAL INSTITUTE OF TECHNOLOGY (R.E.T.S.)	1	.0	.2	94.9
	7022 BAKER COLLEGE	30	.9	4.6	99.5
	7150 CENTER-CREATIVE STUDIES(ARTS&CRAFTS) QTR(2/3) OR	3	.1	.5	100.0
Total	648	19.1	100.0		
Missing	8888 Does not apply	134	4.0		
	9999 Missing System	988	29.1		
	Total	1621	47.8		
	Total	2743	80.9		
Total		3391	100.0		

# Frequencies

## Statistics

CREDREG

N	Valid	23688
	Missing	0

## CREDREG

	Frequency	Percent	Valid Percent	Cumulative Percent
Valid 1	198	.8	.8	.8
2	248	1.0	1.0	1.9
3	3348	14.1	14.1	16.0
4	4160	17.6	17.6	33.6
5	1	.0	.0	33.6
5	245	1.0	1.0	34.6
6	2127	9.0	9.0	43.6
7	2442	10.3	10.3	53.9
8	1	.0	.0	53.9
8	1613	6.8	6.8	60.7
9	924	3.9	3.9	64.6
10	1363	5.8	5.8	70.4
11	901	3.8	3.8	74.2
12	2523	10.7	10.7	84.8
13	1682	7.1	7.1	91.9
14	1113	4.7	4.7	96.6
15	403	1.7	1.7	98.3
16	232	1.0	1.0	99.3
17	118	.5	.5	99.8
18	29	.1	.1	99.9
19	7	.0	.0	100.0
20	4	.0	.0	100.0
21	4	.0	.0	100.0
22	1	.0	.0	100.0
23	1	.0	.0	100.0
Total	23688	100.0	100.0	

99 Follow-up #2

Frequencies

Statistics

		currently employed -- follow-up #2	currently attending college -- follow-up #2	which college -- follow-up #2	do you plan to attend college in future -- follow-up #2	If plan to attend college, when? -- follow-up #2
N	Valid	20	46	18	26	46
	Missing	26	0	28	20	0
Mean		1.10		2042.28		

Statistics

		Expected field of study-- follow-up #2	what is longterm ed. goal -- follow-up #2	how sure about ed goal -- follow-up #2	NARRATIVE: Extent to which college/work influenced by PSP -- follow-up #2	long-term career goal -- follow-up #2
N	Valid	17	20	18	46	14
	Missing	29	26	28	0	32
Mean		21.06	5.65	2.89		20.50

Statistics

		sure about career goal -- follow-up #2	responded to follow-up survey #3
N	Valid	20	46
	Missing	26	0
Mean		2.20	

Frequency Table

currently employed -- follow-up #2

		Frequency	Percent	Valid Percent	Cumulative Percent
Valid	not employed	6	13.0	30.0	30.0
	yes, part-time	6	13.0	30.0	60.0
	yes, full-time	8	17.4	40.0	100.0
	Total	20	43.5	100.0	
Missing	System	26	56.5		
Total		46	100.0		

currently attending college -- follow-up #2

	Frequency	Percent	Valid Percent	Cumulative Percent
Valid	26	56.5	56.5	56.5
no	2	4.3	4.3	60.9
yes	18	39.1	39.1	100.0
Total	46	100.0	100.0	

which college -- follow-up #2

	Frequency	Percent	Valid Percent	Cumulative Percent
Valid 2005	1	2.2	5.6	5.6
Oakland University	4	8.7	22.2	27.8
2041	1	2.2	5.6	33.3
Oakland Community College	9	19.6	50.0	83.3
2064	1	2.2	5.6	88.9
2066	2	4.3	11.1	100.0
Total	18	39.1	100.0	
Missing does not apply	2	4.3		
System	26	56.5		
Total	28	60.9		
Total	46	100.0		

do you plan to attend college in future -- follow-up #2

	Frequency	Percent	Valid Percent	Cumulative Percent
Valid	26	56.5	100.0	100.0
Missing does not apply	20	43.5		
Total	46	100.0		

If plan to attend college, when? -- follow-up #2

	Frequency	Percent	Valid Percent	Cumulative Percent
Valid	26	56.5	56.5	56.5
88	20	43.5	43.5	100.0
Total	46	100.0	100.0	



Expected field of study-- follow-up #2

		Frequency	Percent	Valid Percent	Cumulative Percent
Valid	Business	5	10.9	29.4	29.4
	Communications	2	4.3	11.8	41.2
	Computer Hardware	1	2.2	5.9	47.1
	Engineering Technology	1	2.2	5.9	53.0
	Medical Assisting	3	6.5	17.6	70.6
	Hospitality	1	2.2	5.9	76.5
	Liberal Arts	2	4.3	11.8	88.3
	Other	3	6.5	17.6	100.0
	Total	17	37.0	100.0	
Missing	Missing/Undecided	3	6.5		
	System	26	56.5		
	Total	29	63.0		
Total		46	100.0		

what is longterm ed. goal -- follow-up #2

		Frequency	Percent	Valid Percent	Cumulative Percent
Valid	Two-year Associate Degree	1	2.2	5.0	5.0
	Baccalaureate Degree (B.A. or B.S.)	7	15.2	35.0	40.0
	Masters Degree or Higher (M.A., Ph.D., M.D., etc...)	10	21.7	50.0	90.0
	Uncertain/Missing	2	4.3	10.0	100.0
	Total	20	43.5	100.0	
Missing	System	26	56.5		
Total		46	100.0		

how sure about ed goal -- follow-up #2

		Frequency	Percent	Valid Percent	Cumulative Percent
Valid	Somewhat sure	2	4.3	11.1	11.1
	Very sure	16	34.8	88.9	100.0
	Total	18	39.1	100.0	
Missing	does not apply	2	4.3		
	System	26	56.5		
	Total	28	60.9		
Total		46	100.0		

NARRATIVE: Extent to which college/work influenced by PSP -- follow-up #2

		Frequency	Percent	Valid Percent	Cumulative Percent
Valid	2	26	56.5	56.5	56.5
	3	1	2.2	2.2	58.7
	4	4	8.7	8.7	67.4
	5	15	32.6	32.6	100.0
	Total	46	100.0	100.0	

long-term career goal -- follow-up#2

		Frequency	Percent	Valid Percent	Cumulative Percent
Valid	Health Care Professional	4	8.7	28.6	28.6
	Sales	1	2.2	7.1	35.7
	Educator (teacher, librarian)	1	2.2	7.1	42.9
	Computer Technology/ Programmer/Analyst	4	8.7	28.6	71.4
	Hospitality/Service Industry Work	1	2.2	7.1	78.6
	Entrepreneur	1	2.2	7.1	85.7
	Other	2	4.3	14.3	100.0
	Total	14	30.4	100.0	
Missing	undecided/missing	6	13.0		
	System	26	56.5		
	Total	32	69.6		
Total		46	100.0		

sure about career goal -- follow-up #2

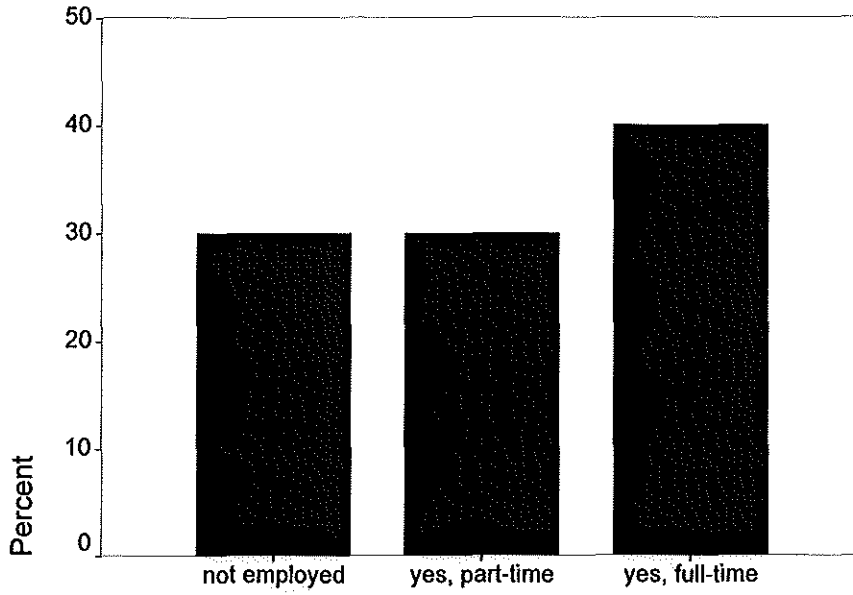
		Frequency	Percent	Valid Percent	Cumulative Percent
Valid	Not sure at all	7	15.2	35.0	35.0
	Somewhat sure	2	4.3	10.0	45.0
	Very sure	11	23.9	55.0	100.0
	Total	20	43.5	100.0	
Missing	System	26	56.5		
Total		46	100.0		

responded to follow-up survey #3

	Frequency	Percent	Valid Percent	Cumulative Percent
Valid	46	100.0	100.0	100.0

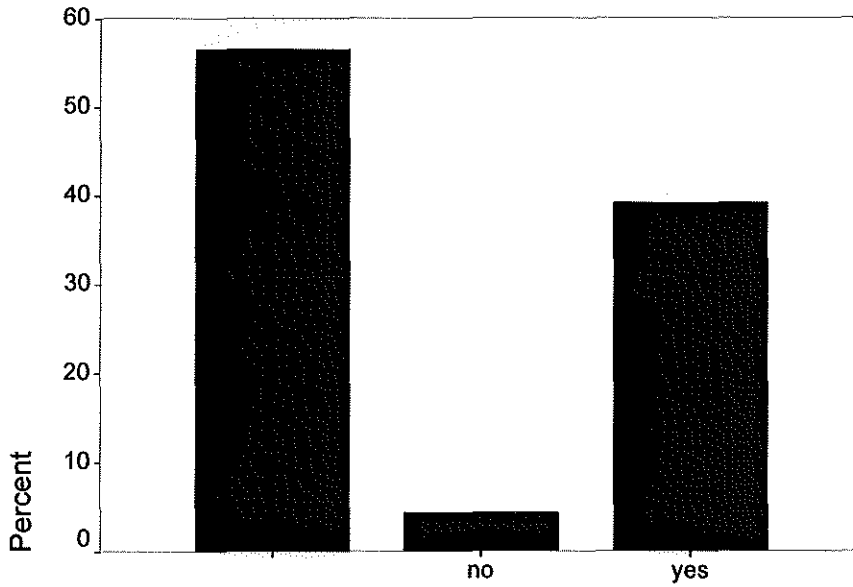
Bar Chart

currently employed -- follow-up #2



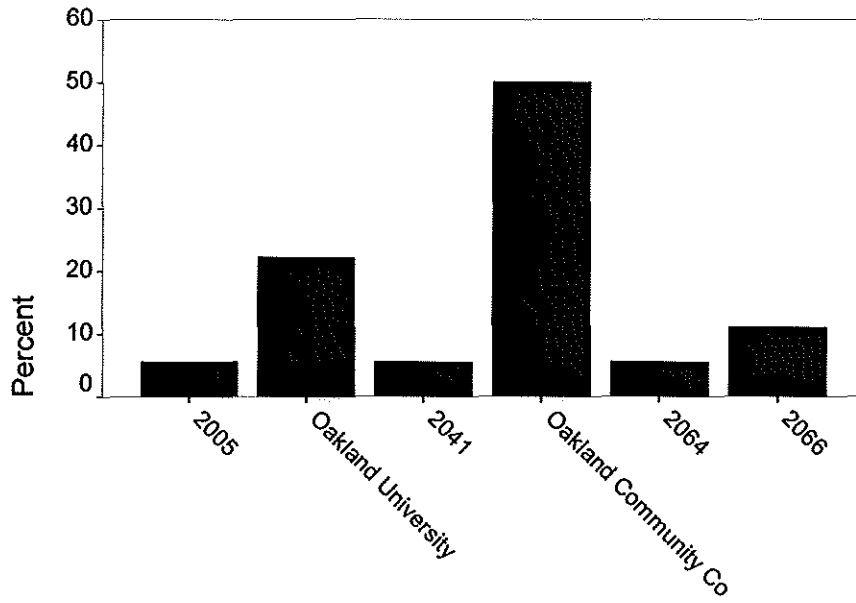
currently employed -- follow-up #2

currently attending college -- follow-up #2



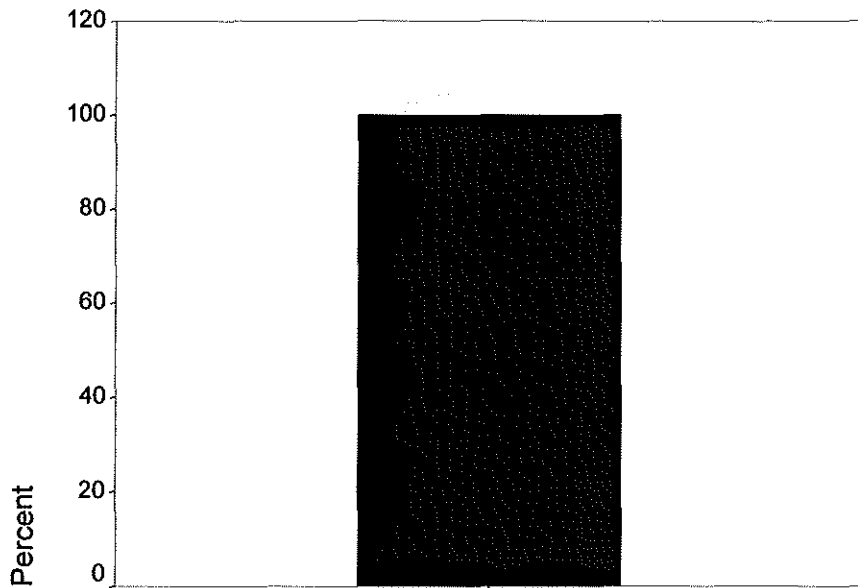
currently attending college -- follow-up #2

which college -- follow-up #2



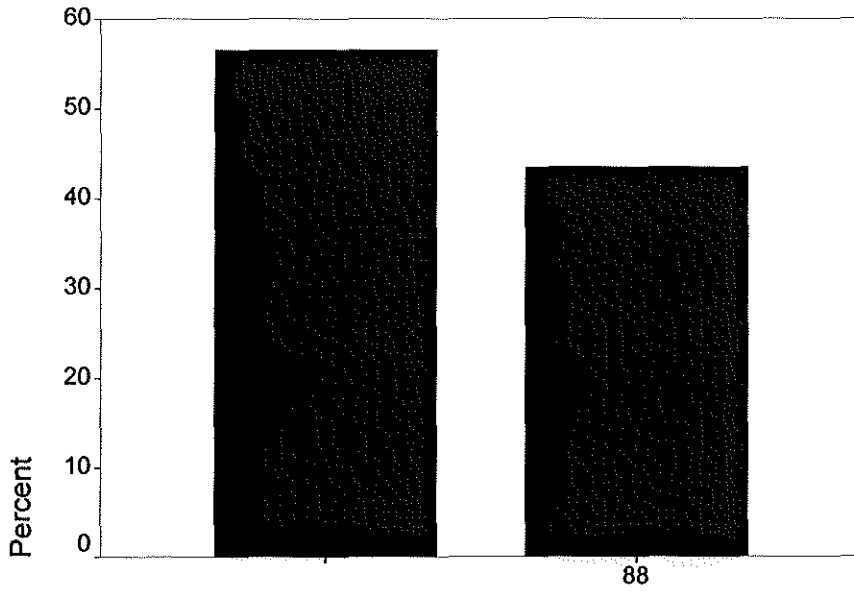
which college -- follow-up #2

do you plan to attend college in future -- fol



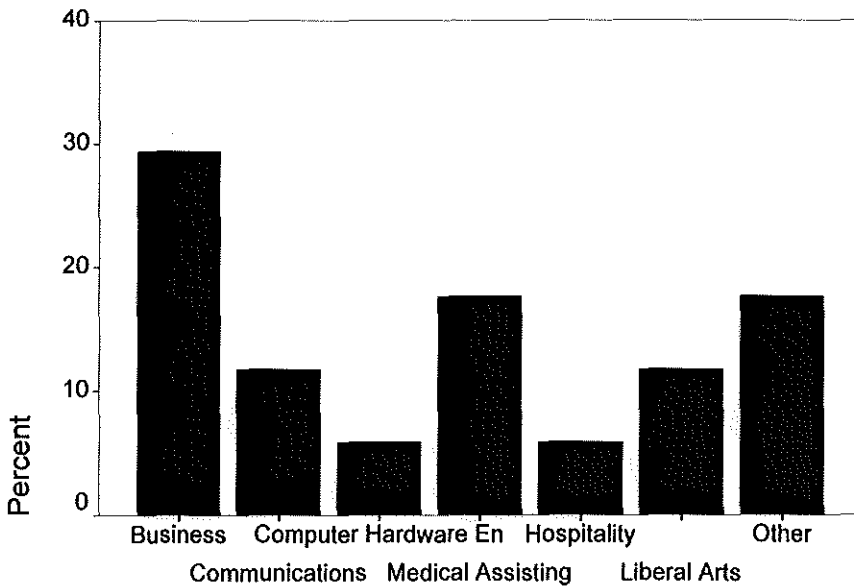
do you plan to attend college in future -- follow-up #2

If plan to attend college, when? -- follow-up



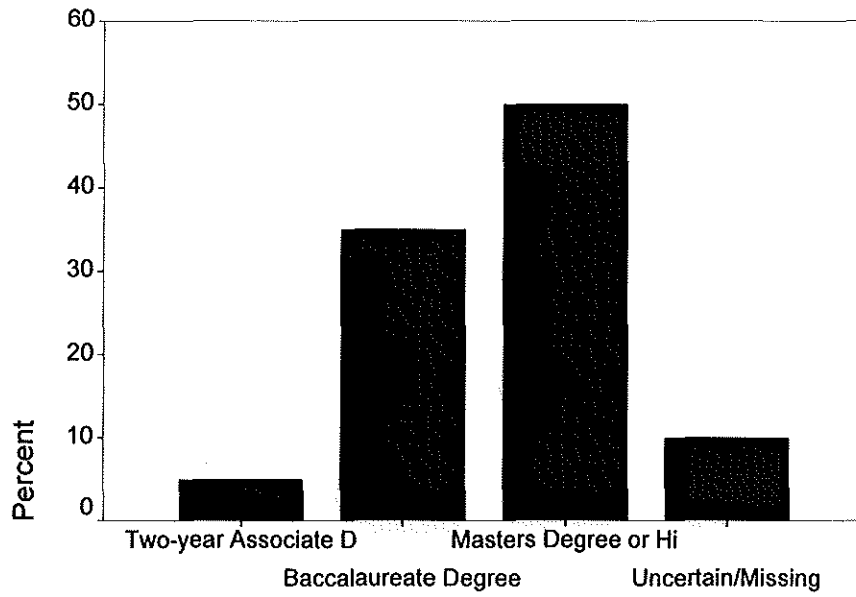
If plan to attend college, when? -- follow-up #2

Expected field of study-- follow-up #2



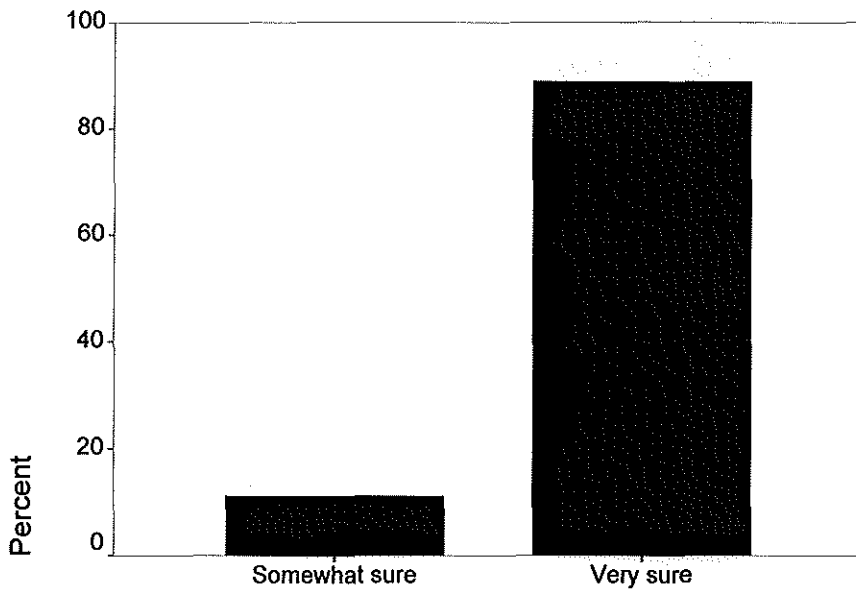
Expected field of study-- follow-up #2

what is longterm ed. goal -- follow-up #2



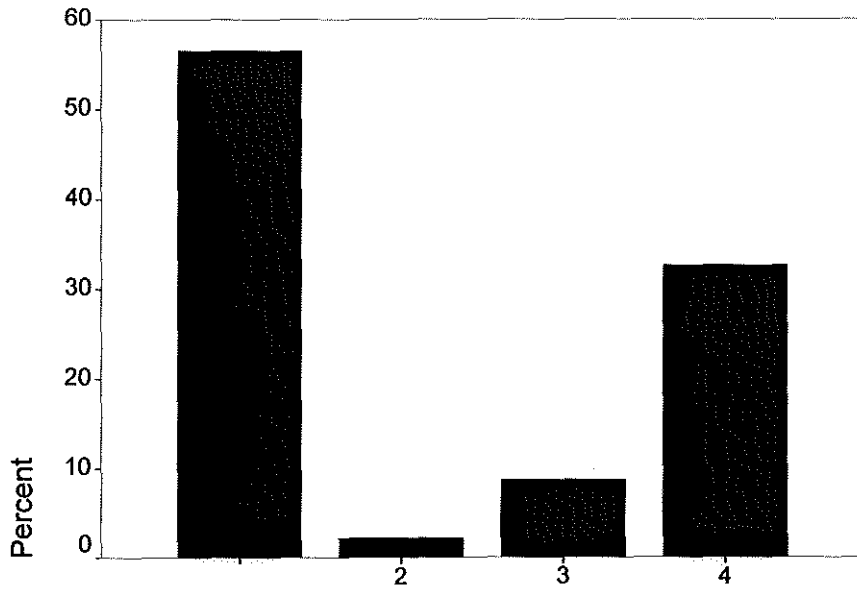
what is longterm ed. goal -- follow-up #2

how sure about ed goal -- follow-up #2



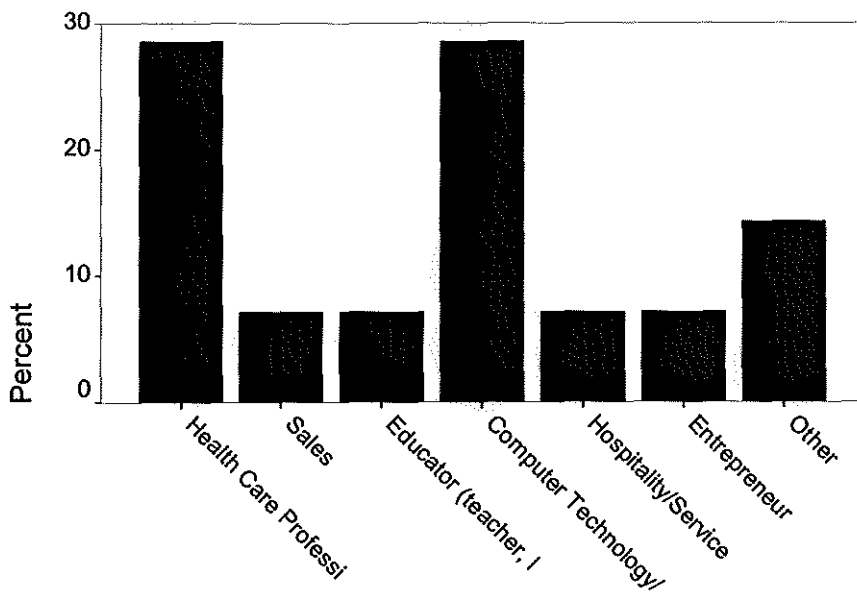
how sure about ed goal -- follow-up #2

NARRATIVE: Extent to which college/work



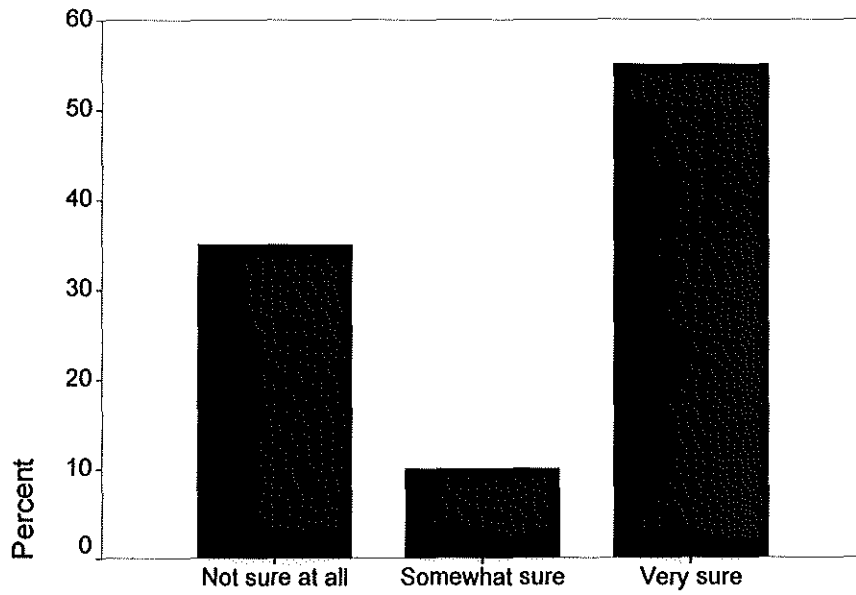
NARRATIVE: Extent to which college/work influenced by PS

long-term career goal -- follow-up#2



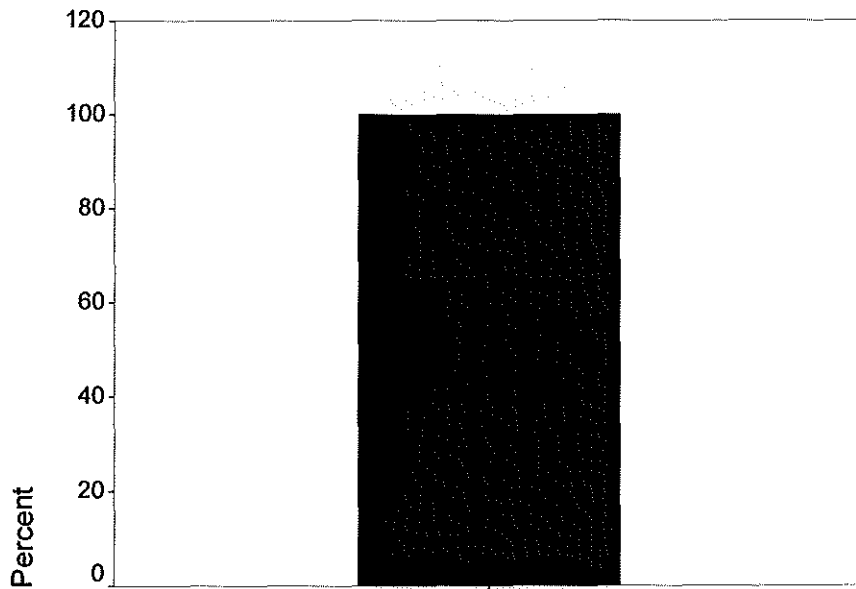
long-term career goal -- follow-up#2

sure about career goal -- follow-up #2



sure about career goal -- follow-up #2

responded to follow-up survey #3



responded to follow-up survey #3



HSGRADYR

	Frequency	Percent	Valid Percent	Cumulative Percent
Valid 91	80	1.2	1.2	77.9
92	97	1.5	1.5	79.4
93	100	1.5	1.5	80.9
94	131	2.0	2.0	82.9
95	132	2.0	2.0	85.0
96	181	2.8	2.8	87.8
97	209	3.2	3.2	91.0
98	221	3.4	3.4	94.4
99	360	5.6	5.6	100.0
Total	6465	100.0	100.0	

# Frequencies

## Statistics

HSGRADYR

N	Valid	6465
	Missing	0

### HSGRADYR

	Frequency	Percent	Valid Percent	Cumulative Percent
Valid	845	13.1	13.1	13.1
00	684	10.6	10.6	23.7
01	2244	34.7	34.7	58.4
02	132	2.0	2.0	60.4
03	13	.2	.2	60.6
05	1	.0	.0	60.6
07	1	.0	.0	60.6
45	3	.0	.0	60.7
47	1	.0	.0	60.7
49	1	.0	.0	60.7
51	1	.0	.0	60.7
56	3	.0	.0	60.8
57	2	.0	.0	60.8
58	3	.0	.0	60.9
59	2	.0	.0	60.9
60	5	.1	.1	61.0
61	8	.1	.1	61.1
62	6	.1	.1	61.2
63	12	.2	.2	61.4
64	11	.2	.2	61.5
65	13	.2	.2	61.7
66	15	.2	.2	62.0
67	11	.2	.2	62.1
68	14	.2	.2	62.4
69	16	.2	.2	62.6
70	21	.3	.3	62.9
71	21	.3	.3	63.2
72	26	.4	.4	63.7
73	29	.4	.4	64.1
74	30	.5	.5	64.6
75	33	.5	.5	65.1
76	27	.4	.4	65.5
77	30	.5	.5	66.0
78	33	.5	.5	66.5
79	41	.6	.6	67.1
80	42	.6	.6	67.7
81	44	.7	.7	68.4
82	40	.6	.6	69.0
83	49	.8	.8	69.8
84	39	.6	.6	70.4
85	39	.6	.6	71.0
86	59	.9	.9	71.9
87	75	1.2	1.2	73.1
88	74	1.1	1.1	74.2
89	67	1.0	1.0	75.3
90	88	1.4	1.4	76.6

48

39

35

2000 2001  
43% 35%