



OAKLAND
COMMUNITY
COLLEGE

**CREDIT HOUR TRENDS REPORT
(1989-90 THROUGH 1998-99)**

Prepared by:

*The Office of Institutional Research
Oakland Community College
November 1999*

Oakland Community College Credit Hour Trends Report (1989-90 through 1998-99) Major Findings

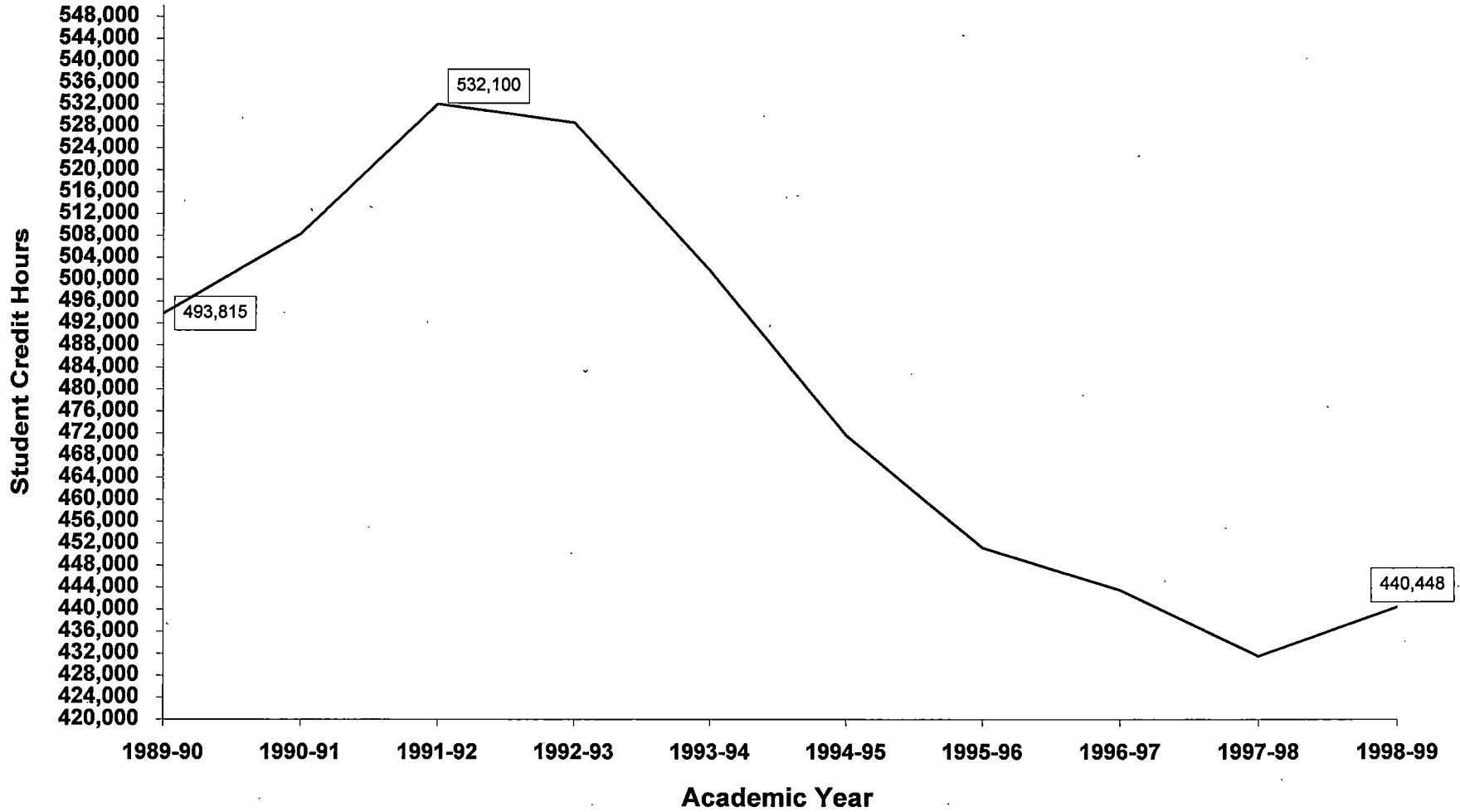
Each year the Office of Institutional Research prepares the Credit Hour Trends report, based on data submitted to the Michigan Department of Education in the ACS-6 report (Activities Classification Structure). The Credit Hour Trends report examines enrollment trends of OCC disciplines, based on course prefix codes and "curriculum clusters."

This report depicts the five and ten year trends in annual credit hours generated, trends in the changing rate of enrollment college-wide and by curriculum cluster, and the top credit hour generating disciplines.

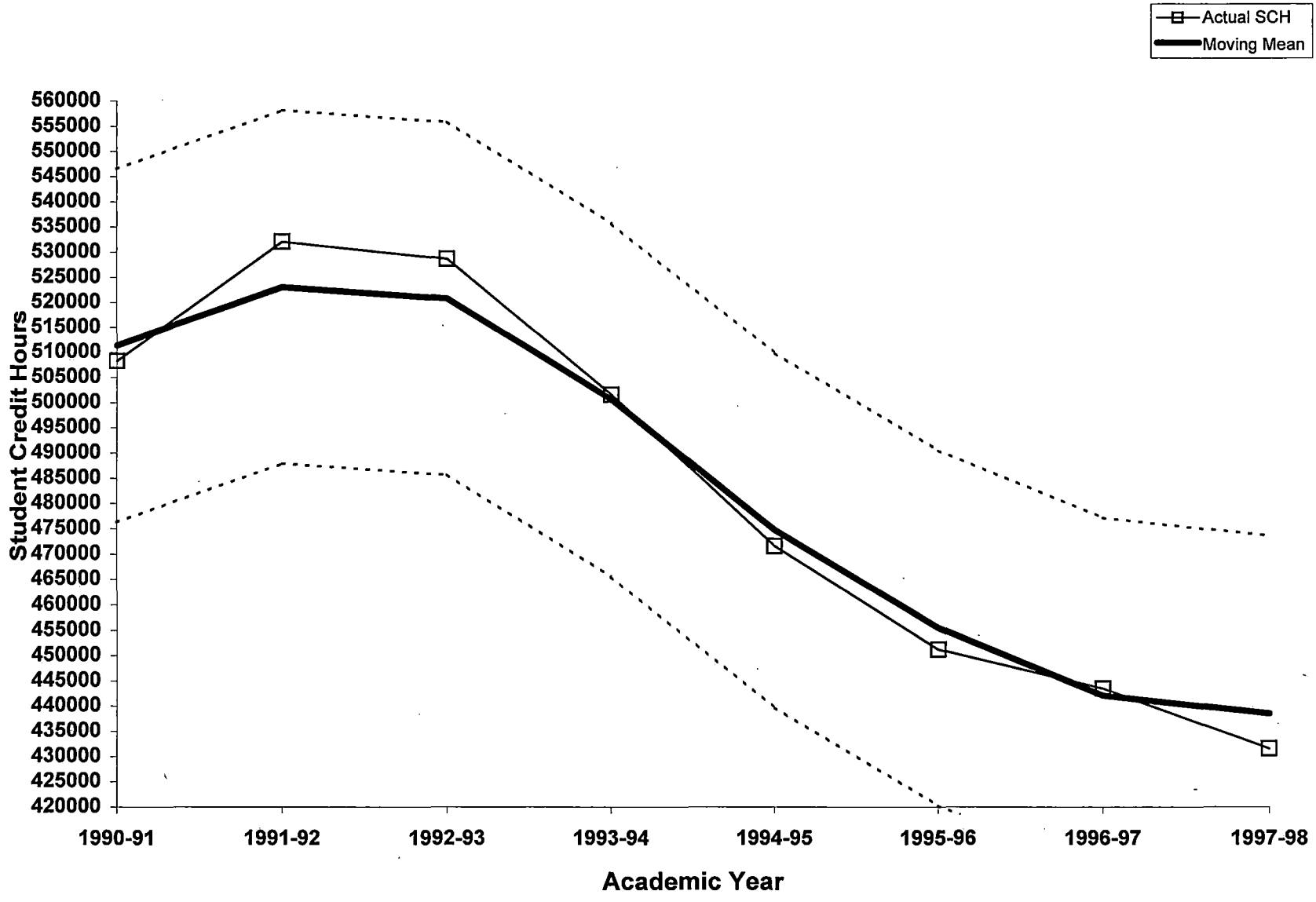
Highlights from this year's report include:

- ◆ Total student credit hour levels increased this year after decreasing in the previous six consecutive years. In the 1991-92 academic year (AY), the number of student credit hours (SCH) peaked with 532,100 SCH generated college-wide. By 1997-98 total SCH had decreased by nearly 19% from this high, for a total of 431,521 SCH. Total student credit hours increased 2% from 1997-98 to 1998-1999, for a total of 440,448 student credit hours in academic year 1998-99.
- ◆ The increase in total credit hours during academic year 1998-99 reflects an upward swing overall. While the total number of student credit hours declined in each of the previous six years, the rate of decline has lessened since the 1994-95 academic year. For example in 1994-95 the total number of student credit hours had declined nearly 6% from the previous year. Whereas in 1995-96 the total SCH declined approximately 4% from the previous year. Rates of decline were 1.7% and 2.7% for AY 1996-97 and 1997-98, respectively.
- ◆ In 1998-99, eleven disciplines out of 111 generated more than 10,000 student credit hours. The "Top Five" SCH-generating disciplines are Mathematics (MAT), English (ENG), Computer Information Systems (CIS), Psychology (PSY), and Biology (BIO).
- ◆ Sixty disciplines out of 111 generated less than 1,000 SCH in 1998-99.
- ◆ In the past five years, 43 disciplines increased the number of SCH generated. During this time the number of SCH generated declined for 70 disciplines. In the past ten years, 43 disciplines increased the number of SCH generated. During this time the number of SCH generated declined for 71 disciplines.
- ◆ In order to provide a broader understanding of enrollment trends in various disciplines, course prefix codes are grouped into eight curriculum clusters. The three largest curriculum clusters are Math & Sciences (generating 24% of the college's total SCH), Humanities & Language (generating 21% of the college's total SCH), and Social Sciences (generating 17% of the college's total SCH).

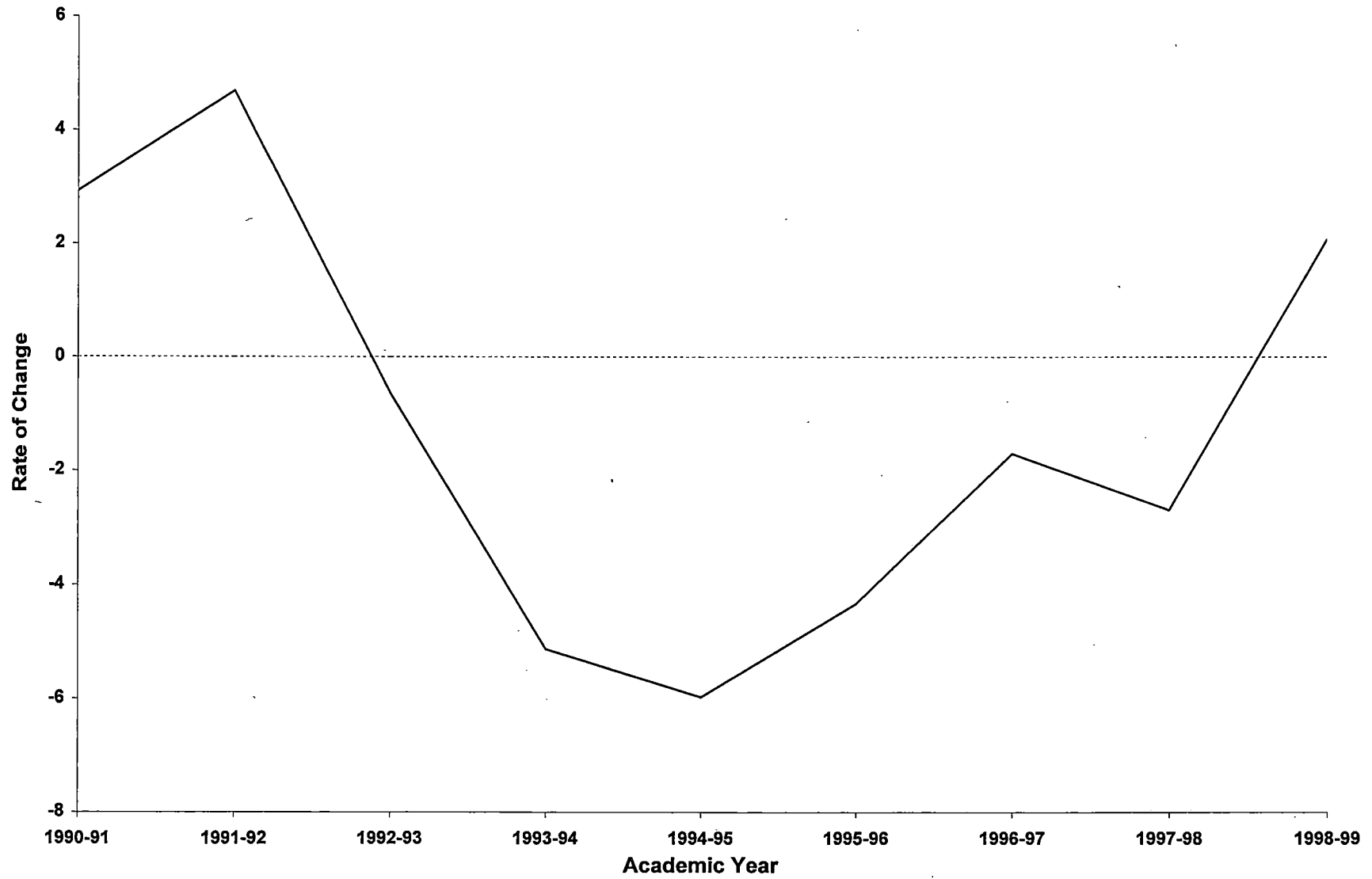
Oakland Community College
Ten Year Trend in Student Credit Hours
College-wide Totals
1989-90 Through 1998-99



**Oakland Community College
Three Year Moving Mean
College-wide
through 1997-98**



**Oakland Community College
Rate of Change in Student Credit Hours
College-wide Totals
1989-90 through 1998-99**



Oakland Community College
Student Credit Hours
Sorted by Total Student Credit Hours
1998-99

Course Prefix	Description	1998-99 SCH	One Year % Change	5 Year % Change	10 Year % Change
MAT	Mathematics	63,712	0	-4	-6
ENG	English	46,965	-2	-19	-25
CIS	Computer Info Systems	34,373	1	26	56
PSY	Psychology	20,954	0	-13	-22
BIO	Biology	17,234	-5	-33	-10
BUS	Business Administration	16,619	1	2	-32
POL	Political Science	15,000	2	-9	-23
ACC	Accounting	13,213	-4	-15	-42
HIS	History	12,432	4	14	-6
ESL	English as a Second Language	11,279	23	203	3,028
ART	Art	10,596	0	1	-7
ECO	Economics	9,840	1	-12	-33
HUM	Humanities	9,024	1	-12	-27
SOC	Sociology	8,637	-2	-15	-29
PER	Physical Education	8,351	6	-15	-12
CHE	Chemistry	8,336	0	-26	-7
CAD	Computer Aided Design & Drafting	7,776	6	19	91
NUR	Nursing	7,120	-3	-6	36
BPI	Business Professional Inst.	6,884	321	21	2,553
SPA	Spanish	6,696	4	38	89
PHI	Philosophy	6,006	2	12	26
SPE	Speech	5,405	0	-14	6
PLS	Law Enforcement	5,212	3	-2	-1
PHO	Photography	4,844	5	19	12
BIS	Bus Info Sys	4,312	-9	-18	-52
PHY	Physics	3,633	-4	-2	40
GSC	General Science	3,376	1	-1	-3
CSC	Community Service Course	3,256	33	-48	-58
PAS	Police Academy Science	2,983	30	149	91
FST	Food Service	2,751	2	-24	-30
DDT	Drafting Design Tech	2,517	-2	-15	-25
SSC	Social Science	2,517	18	-23	-58
HEA	Health	2,424	4	-32	7
FTI	Fire Technical Institute	2,283	30	-46	12
LSC	Life Science	2,136	8	0	-26
ANT	Anthropology	2,094	29	8	33
MUS	Music	2,064	-13	-1	-33
MKT	Marketing	1,911	5	3	-49
FRE	French	1,852	3	-8	-5
ECD	Early Childhood Dev.	1,754	-20	-2	52
CER	Ceramics	1,728	4	28	-8

Course Prefix	Description	1998-99 SCH	One Year % Change	5 Year % Change	10 Year % Change
EMT	Emergency Med Tech	1,625	-5	13	95
MHA	Mental Health	1,624	-15	-26	-35
THE	Theatre	1,617	9	37	12
MTS	Manufacturing Technolical Ser	1,487	14	100	100
MED	Medical Technology	1,311	-10	-43	-28
CEC	Continuing Education	1,308	110	68	100
GCA	Graphics/Commercial Art	1,266	43	-1	-38
GER	German	1,264	16	14	7
LGL	Legal Assisting	1,233	-10	-35	41
LST	Landscape Tech	1,206	-9	-24	-38
ROB	Robotics Tech	1,132	5	4	-24
DHY	Dental Hygiene	1,122	0	2	-3
EEC	Electrical/Electronics Tech	1,065	-18	-31	100
FFT	Fire Fighter Technology	984	86	-27	100
EGR	Pre-Engineering	926	0	3	95
GEO	Geography	903	37	45	34
ATA	Automobile Servicing	888	-27	-41	-50
JPN	Japanese	844	21	34	100
MDA	Medical Assisting	838	-15	-38	65
DMS	Diagno. Med Sonography	823	7	10	-8
CNS	Counseling	806	-23	-39	-55
FSH	Found Stud./Humanities	800	-30	-33	-74
EXL	Exercise Science & Technology	768	-17	-21	-6
BTC	Business Technology Center	768	167	100	100
TER	Climate Control Tech	727	-12	-40	-58
IIC	Indiv. Instruction Center	712	-42	-58	28
ARC	Architecture	660	-19	-19	-44
ECT	Computer Hardware Engineering Tech	644	-6	-25	-27
SLS	Sign Language Studies	621	11	4	-5
RAD	Radiologic Tech	607	-23	-9	135
RSP	Respiratory Therapy	579	-21	-37	-6
ATM	Machine Tool Tech	525	22	-49	-39
VBT	Vehicle Body	520	-7	-42	-59
MEC	Mechanical Technology	519	-5	-17	7
HCA	Health Care Admin.	504	10	5	-5
FSN	Found Stud./Nat.Science	496	32	53	-17
ISC	Instructional Sport Camps	450	-28	-22	-12
ITA	Italian	436	51	63	100
MST	Massage Therapy	371	100	100	100
ATW	Welding/Fabrication Tech	363	-39	3	-15
EDU	Education	333	23	217	6
DSB	Dir.Study/Behav/Soc.Sci.	318	6	108	18
ADT	Automobile Drawing	315	-17	62	-30
HPT	Hospital Pharmacy Tech	269	-21	-17	-22
APP	Pre-Apprentice	262	2	-18	93
ETT	Electrical Trades Tech	256	-12	41	-85
FLT	Aviation Flight Tech	251	-20	-62	-74

Course Prefix	Description	1998-99 SCH	One Year % Change	5 Year % Change	10 Year % Change
LIB	Library Tech	245	-16	-17	67
APM	Apprentice Pattern Maker	232	-52	-49	-35
ELT	Electronics Tech	222	-20	-31	100
RUS	Russian	208	100	100	100
ATF	Fluid Power Tech	204	-41	-39	-50
APD	Apprentice Drafting	171	10	-46	-81
PSC	Physical Science	168	-22	-13	-28
GRN	Gerontology	162	-30	-70	-55
ARB	Arabic	156	117	100	100
FSS	Found Stud./Soc.Science	128	-51	-43	-83
CIM	Computer Integrated Mfg.	124	-58	-23	-74
X..	Pentastar Courses	122	10,997	-67	100
TED	Pre-Apprentice Drafting	117	-15	-64	-82
IND	Industrial Sciences	116	25	-55	-54
DEN	Dental Assisting	90	7	-3	11
RET	Retailing	90	50	-72	-86
WOD	Woodworking	84	-7	75	-51
APT	Apprentice Tinsmith	81	-47	-63	-46
KEH	Kind., Elementary, High Sch	79	-11	8	-80
QAT	Quality Assurance Tech	78	-4	-92	-87
APS	Apprentice Shop	45	100	15	-48
DRT	Drafting	24	-43	-53	100
JOR	Journalism	22	633	-54	-85
COM	Communications	18	200	-96	-98
PPI	Public Professional Inst.	12	100	100	-83
AET	Alternative Energy Tech	4	-94	100	-98

Oakland Community College
Student Credit Hours
Sorted by One Year Percent Change
1997-98 Through 1998-99

Course Prefix	Description	1998-99 SCH	One Year % Change	5 Year % Change	10 Year % Change
X..	Pentastar Courses	122	10,997	-67	100
JOR	Journalism	22	633	-54	-85
BPI	Business Professional Inst.	6,884	321	21	2,553
COM	Communications	18	200	-96	-98
BTC	Business Technology Center	768	167	100	100
ARB	Arabic	156	117	100	100
CEC	Continuing Education	1,308	110	68	100
MST	Massage Therapy	371	100	100	100
RUS	Russian	208	100	100	100
APS	Apprentice Shop	45	100	15	-48
PPI	Public Professional Inst.	12	100	100	-83
FFT	Fire Fighter Technology	984	86	-27	100
ITA	Italian	436	51	63	100
RET	Retailing	90	50	-72	-86
GCA	Graphics/Commercial Art	1,266	43	-1	-38
GEO	Geography	903	37	45	34
CSC	Community Service Course	3,256	33	-48	-58
FSN	Found Stud./Nat.Science	496	32	53	-17
FTI	Fire Technical Institute	2,283	30	-46	12
PAS	Police Academy Science	2,983	30	149	91
ANT	Anthropology	2,094	29	8	33
IND	Industrial Sciences	116	25	-55	-54
EDU	Education	333	23	217	6
ESL	English as a Second Language	11,279	23	203	3,028
ATM	Machine Tool Tech	525	22	-49	-39
JPN	Japanese	844	21	34	100
SSC	Social Science	2,517	18	-23	-58
GER	German	1,264	16	14	7
MTS	Manufacturing Technolglcal Ser	1,487	14	100	100
SLS	Sign Language Studies	621	11	4	-5
HCA	Health Care Admin.	504	10	5	-5
APD	Apprentice Drafting	171	10	-46	-81
THE	Theatre	1,617	9	37	12
LSC	Life Science	2,136	8	0	-26
DMS	Diagno. Med Sonography	823	7	10	-8
DEN	Dental Assisting	90	7	-3	11
CAD	Computer Aided Design & Drafting	7,776	6	19	91
PER	Physical Education	8,351	6	-15	-12
DSB	Dir.Study/Behav/Soc.Sci.	318	6	108	18
MKT	Marketing	1,911	5	3	-49
ROB	Robotics Tech	1,132	5	4	-24

Course Prefix	Description	1998-99 SCH	One Year % Change	5 Year % Change	10 Year % Change
PHO	Photography	4,844	5	19	12
HIS	History	12,432	4	14	-6
CER	Ceramics	1,728	4	28	-8
HEA	Health	2,424	4	-32	7
SPA	Spanish	6,696	4	38	89
FRE	French	1,852	3	-8	-5
PLS	Law Enforcement	5,212	3	-2	-1
POL	Political Science	15,000	2	-9	-23
APP	Pre-Apprentice	262	2	-18	93
FST	Food Service	2,751	2	-24	-30
PHI	Philosophy	6,006	2	12	26
BUS	Business Administration	16,619	1	2	-32
HUM	Humanities	9,024	1	-12	-27
ECO	Economics	9,840	1	-12	-33
GSC	General Science	3,376	1	-1	-3
CIS	Computer Info Systems	34,373	1	26	56
PSY	Psychology	20,954	0	-13	-22
SPE	Speech	5,405	0	-14	6
EGR	Pre-Engineering	926	0	3	95
CHE	Chemistry	8,336	0	-26	-7
ART	Art	10,596	0	1	-7
DHY	Dental Hygiene	1,122	0	2	-3
MAT	Mathematics	63,712	0	-4	-6
SOC	Sociology	8,637	-2	-15	-29
ENG	English	46,965	-2	-19	-25
DDT	Drafting Design Tech	2,517	-2	-15	-25
NUR	Nursing	7,120	-3	-6	36
ACC	Accounting	13,213	-4	-15	-42
QAT	Quality Assurance Tech	78	-4	-92	-87
PHY	Physics	3,633	-4	-2	40
BIO	Biology	17,234	-5	-33	-10
EMT	Emergency Med Tech	1,625	-5	13	95
MEC	Mechanical Technology	519	-5	-17	7
ECT	Computer Hardware Engineering Tech	644	-6	-25	-27
WOD	Woodworking	84	-7	75	-51
VBT	Vehicle Body	520	-7	-42	-59
LST	Landscape Tech	1,206	-9	-24	-38
BIS	Bus Info Sys	4,312	-9	-18	-52
MED	Medical Technology	1,311	-10	-43	-28
LGL	Legal Assisting	1,233	-10	-35	41
KEH	Kind., Elementary, High Sch	79	-11	8	-80
ETT	Electrical Trades Tech	256	-12	41	-85
TER	Climate Control Tech	727	-12	-40	-58
MUS	Music	2,064	-13	-1	-33
MDA	Medical Assisting	838	-15	-38	65
MHA	Mental Health	1,624	-15	-26	-35
TED	Pre-Apprentice Drafting	117	-15	-64	-82

Course Prefix	Description	1998-99 SCH	One Year % Change	5 Year % Change	10 Year % Change
LIB	Library Tech	245	-16	-17	67
ADT	Automobile Drawing	315	-17	62	-30
EXL	Exercise Science & Technology	768	-17	-21	-6
EEC	Electrical/Electronics Tech	1,065	-18	-31	100
ARC	Architecture	660	-19	-19	-44
FLT	Aviation Flight Tech	251	-20	-62	-74
ECD	Early Childhood Dev.	1,754	-20	-2	52
ELT	Electronics Tech	222	-20	-31	100
RSP	Respiratory Therapy	579	-21	-37	-6
HPT	Hospital Pharmacy Tech	269	-21	-17	-22
PSC	Physical Science	168	-22	-13	-28
CNS	Counseling	806	-23	-39	-55
RAD	Radiologic Tech	607	-23	-9	135
ATA	Automobile Servicing	888	-27	-41	-50
ISC	Instructional Sport Camps	450	-28	-22	-12
GRN	Gerontology	162	-30	-70	-55
FSH	Found Stud./Humanities	800	-30	-33	-74
ATW	Welding/Fabrication Tech	363	-39	3	-15
ATF	Fluid Power Tech	204	-41	-39	-50
IIC	Indiv. Instruction Center	712	-42	-58	28
DRT	Drafting	24	-43	-53	100
APT	Apprentice Tinsmith	81	-47	-63	-46
FSS	Found Stud./Soc.Science	128	-51	-43	-83
APM	Apprentice Pattern Maker	232	-52	-49	-35
CIM	Computer Integrated Mfg.	124	-58	-23	-74
AET	Alternative Energy Tech	4	-94	100	-98

Oakland Community College
Student Credit Hours
Sorted by 5 Year Percent Change
1994-95 Through 1998-99

Course Prefix	Description	1998-99 SCH	One Year % Change	5 Year % Change	10 Year % Change
EDU	Education	333	23	217	6
ESL	English as a Second Language	11,279	23	203	3,028
PAS	Police Academy Science	2,983	30	149	91
DSB	Dir.Study/Behav/Soc.Sci.	318	6	108	18
RUS	Russian	208	100	100	100
PPI	Public Professional Inst.	12	100	100	-83
MTS	Manufacturing Technolical Ser	1,487	14	100	100
MST	Massage Therapy	371	100	100	100
BTC	Business Technology Center	768	167	100	100
ARB	Arabic	156	117	100	100
AET	Alternative Energy Tech	4	-94	100	-98
WOD	Woodworking	84	-7	75	-51
CEC	Continuing Education	1,308	110	68	100
ITA	Italian	436	51	63	100
ADT	Automobile Drawing	315	-17	62	-30
FSN	Found Stud./Nat.Science	496	32	53	-17
GEO	Geography	903	37	45	34
ETT	Electrical Trades Tech	256	-12	41	-85
SPA	Spanish	6,696	4	38	89
THE	Theatre	1,617	9	37	12
JPN	Japanese	844	21	34	100
CER	Ceramics	1,728	4	28	-8
CIS	Computer Info Systems	34,373	1	26	56
BPI	Business Professional Inst.	6,884	321	21	2,553
CAD	Computer Aided Design & Drafting	7,776	6	19	91
PHO	Photography	4,844	5	19	12
APS	Apprentice Shop	45	100	15	-48
GER	German	1,264	16	14	7
HIS	History	12,432	4	14	-6
EMT	Emergency Med Tech	1,625	-5	13	95
PHI	Philosophy	6,006	2	12	26
DMS	Diagno. Med Sonography	823	7	10	-8
KEH	Kind., Elementary, High Sch	79	-11	8	-80
ANT	Anthropology	2,094	29	8	33
HCA	Health Care Admin.	504	10	5	-5
ROB	Robotics Tech	1,132	5	4	-24
SLS	Sign Language Studies	621	11	4	-5
EGR	Pre-Engineering	926	0	3	95
ATW	Welding/Fabrication Tech	363	-39	3	-15
MKT	Marketing	1,911	5	3	-49
DHY	Dental Hygiene	1,122	0	2	-3

Course Prefix	Description	1998-99 SCH	One Year % Change	5 Year % Change	10 Year % Change
BUS	Business Administration	16,619	1	2	-32
ART	Art	10,596	0	1	-7
LSC	Life Science	2,136	8	0	-26
GSC	General Science	3,376	1	-1	-3
GCA	Graphics/Commercial Art	1,266	43	-1	-38
MUS	Music	2,064	-13	-1	-33
PHY	Physics	3,633	-4	-2	40
PLS	Law Enforcement	5,212	3	-2	-1
ECD	Early Childhood Dev.	1,754	-20	-2	52
DEN	Dental Assisting	90	7	-3	11
MAT	Mathematics	63,712	0	-4	-6
NUR	Nursing	7,120	-3	-6	36
FRE	French	1,852	3	-8	-5
RAD	Radiologic Tech	607	-23	-9	135
POL	Political Science	15,000	2	-9	-23
ECO	Economics	9,840	1	-12	-33
HUM	Humanities	9,024	1	-12	-27
PSC	Physical Science	168	-22	-13	-28
PSY	Psychology	20,954	0	-13	-22
SPE	Speech	5,405	0	-14	6
ACC	Accounting	13,213	-4	-15	-42
DDT	Drafting Design Tech	2,517	-2	-15	-25
PER	Physical Education	8,351	6	-15	-12
SOC	Sociology	8,637	-2	-15	-29
HPT	Hospital Pharmacy Tech	269	-21	-17	-22
LIB	Library Tech	245	-16	-17	67
MEC	Mechanical Technology	519	-5	-17	7
APP	Pre-Apprentice	262	2	-18	93
BIS	Bus Info Sys	4,312	-9	-18	-52
ENG	English	46,965	-2	-19	-25
ARC	Architecture	660	-19	-19	-44
EXL	Exercise Science & Technology	768	-17	-21	-6
ISC	Instructional Sport Camps	450	-28	-22	-12
CIM	Computer Integrated Mfg.	124	-58	-23	-74
SSC	Social Science	2,517	18	-23	-58
FST	Food Service	2,751	2	-24	-30
LST	Landscape Tech	1,206	-9	-24	-38
ECT	Computer Hardware Engineering Tech	644	-6	-25	-27
CHE	Chemistry	8,336	0	-26	-7
MHA	Mental Health	1,624	-15	-26	-35
FFT	Fire Fighter Technology	984	86	-27	100
EEC	Electrical/Electronics Tech	1,065	-18	-31	100
ELT	Electronics Tech	222	-20	-31	100
HEA	Health	2,424	4	-32	7
FSH	Found Stud./Humanities	800	-30	-33	-74
BIO	Biology	17,234	-5	-33	-10
LGL	Legal Assisting	1,233	-10	-35	41

Course Prefix	Description	1998-99 SCH	One Year % Change	5 Year % Change	10 Year % Change
RSP	Respiratory Therapy	579	-21	-37	-6
MDA	Medical Assisting	838	-15	-38	65
ATF	Fluid Power Tech	204	-41	-39	-50
CNS	Counseling	806	-23	-39	-55
TER	Climate Control Tech	727	-12	-40	-58
ATA	Automobile Servicing	888	-27	-41	-50
VBT	Vehicle Body	520	-7	-42	-59
FSS	Found Stud./Soc.Science	128	-51	-43	-83
MED	Medical Technology	1,311	-10	-43	-28
APD	Apprentice Drafting	171	10	-46	-81
FTI	Fire Technical Institute	2,283	30	-46	12
CSC	Community Service Course	3,256	33	-48	-58
ATM	Machine Tool Tech	525	22	-49	-39
APM	Apprentice Pattern Maker	232	-52	-49	-35
DRT	Drafting	24	-43	-53	100
JOR	Journalism	22	633	-54	-85
IND	Industrial Sciences	116	25	-55	-54
IIC	Indiv. Instruction Center	712	-42	-58	28
FLT	Aviation Flight Tech	251	-20	-62	-74
APT	Apprentice Tinsmith	81	-47	-63	-46
TED	Pre-Apprentice Drafting	117	-15	-64	-82
X..	Pentastar Courses	122	10,997	-67	100
GRN	Gerontology	162	-30	-70	-55
RET	Retailing	90	50	-72	-86
QAT	Quality Assurance Tech	78	-4	-92	-87
COM	Communications	18	200	-96	-98

Oakland Community College
Student Credit Hours
Sorted by 10 Year Percent Change
1989-90 Through 1998-99

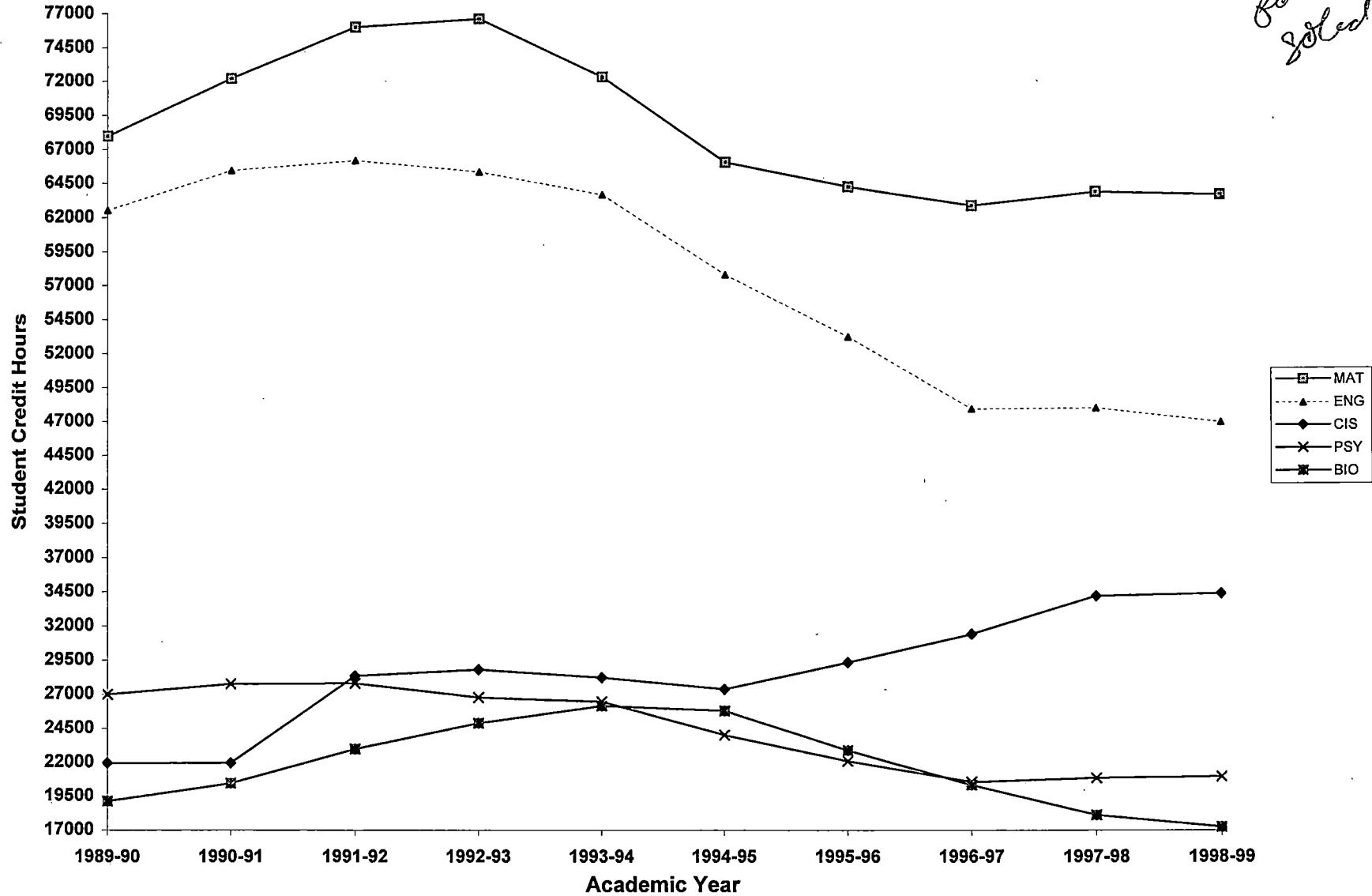
Course Pre	Description	1998-99 SCH	One Year % Change	5 Year % Change	10 Year % Change
ESL	English as a Second Language	11,279	-23	203	3,028
BPI	Business Professional Inst.	6,884	321	21	2,553
RAD	Radiologic Tech	607	-23	-9	135
MTS	Manufacturing Technolglal Ser	1,487	14	100	100
CEC	Continuing Education	1,308	110	68	100
EEC	Electrical/Electronics Tech	1,065	-18	-31	100
FFT	Fire Fighter Technology	984	86	-27	100
JPN	Japanese	844	21	34	100
BTC	Business Technology Center	768	167	100	100
ITA	Italian	436	51	63	100
MST	Massage Therapy	371	100	100	100
ELT	Electronics Tech	222	-20	-31	100
RUS	Russian	208	100	100	100
ARB	Arabic	156	117	100	100
X..	Pentastar Courses	122	10,997	-67	100
DRT	Drafting	24	-43	-53	100
EGR	Pre-Engineering	926	0	3	95
EMT	Emergency Med Tech	1,625	-5	13	95
APP	Pre-Apprentice	262	2	-18	93
CAD	Computer Aided Design & Drafting	7,776	6	19	91
PAS	Police Academy Science	2,983	30	149	91
SPA	Spanish	6,696	4	38	89
LIB	Library Tech	245	-16	-17	67
MDA	Medical Assisting	838	-15	-38	65
CIS	Computer Info Systems	34,373	1	26	56
ECD	Early Childhood Dev.	1,754	-20	-2	52
LGL	Legal Assisting	1,233	-10	-35	41
PHY	Physics	3,633	-4	-2	40
NUR	Nursing	7,120	-3	-6	36
GEO	Geography	903	37	45	34
ANT	Anthropology	2,094	29	8	33
IIC	Indiv. Instruction Center	712	-42	-58	28
PHI	Philosophy	6,006	2	12	26
DSB	Dir.Study/Behav/Soc.Sci.	318	6	108	18
FTI	Fire Technical Institute	2,283	30	-46	12
PHO	Photography	4,844	5	19	12
THE	Theatre	1,617	9	37	12
DEN	Dental Assisting	90	7	-3	11
GER	German	1,264	16	14	7
HEA	Health	2,424	4	-32	7
MEC	Mechanical Technology	519	-5	-17	7

Course Pre	Description	1998-99 SCH	One Year % Change	5 Year % Change	10 Year % Change
SPE	Speech	5,405	0	-14	6
EDU	Education	333	23	217	6
PLS	Law Enforcement	5,212	3	-2	-1
GSC	General Science	3,376	1	-1	-3
DHY	Dental Hygiene	1,122	0	2	-3
FRE	French	1,852	3	-8	-5
SLS	Sign Language Studies	621	11	4	-5
HCA	Health Care Admin.	504	10	5	-5
HIS	History	12,432	4	14	-6
EXL	Exercise Science & Technology	768	-17	-21	-6
MAT	Mathematics	63,712	0	-4	-6
RSP	Respiratory Therapy	579	-21	-37	-6
CHE	Chemistry	8,336	0	-26	-7
ART	Art	10,596	0	1	-7
CER	Ceramics	1,728	4	28	-8
DMS	Diagno. Med Sonography	823	7	10	-8
BIO	Biology	17,234	-5	-33	-10
PER	Physical Education	8,351	6	-15	-12
ISC	Instructional Sport Camps	450	-28	-22	-12
ATW	Welding/Fabrication Tech	363	-39	3	-15
FSN	Found Stud./Nat.Science	496	32	53	-17
HPT	Hospital Pharmacy Tech	269	-21	-17	-22
PSY	Psychology	20,954	0	-13	-22
POL	Political Science	15,000	2	-9	-23
ROB	Robotics Tech	1,132	5	4	-24
ENG	English	46,965	-2	-19	-25
DDT	Drafting Design Tech	2,517	-2	-15	-25
LSC	Life Science	2,136	8	0	-26
ECT	Computer Hardware Engineering Tech	644	-6	-25	-27
HUM	Humanities	9,024	1	-12	-27
PSC	Physical Science	168	-22	-13	-28
MED	Medical Technology	1,311	-10	-43	-28
SOC	Sociology	8,637	-2	-15	-29
FST	Food Service	2,751	2	-24	-30
ADT	Automobile Drawing	315	-17	62	-30
BUS	Business Administration	16,619	1	2	-32
ECO	Economics	9,840	1	-12	-33
MUS	Music	2,064	-13	-1	-33
APM	Apprentice Pattern Maker	232	-52	-49	-35
MHA	Mental Health	1,624	-15	-26	-35
LST	Landscape Tech	1,206	-9	-24	-38
GCA	Graphics/Commercial Art	1,266	43	-1	-38
ATM	Machine Tool Tech	525	22	-49	-39
ACC	Accounting	13,213	-4	-15	-42
ARC	Architecture	660	-19	-19	-44
APT	Apprentice Tinsmith	81	-47	-63	-46
APS	Apprentice Shop	45	100	15	-48

Course Pre	Description	1998-99 SCH	One Year % Change	5 Year % Change	10 Year % Change
MKT	Marketing	1,911	5	3	-49
ATF	Fluid Power Tech	204	-41	-39	-50
ATA	Automobile Servicing	888	-27	-41	-50
WOD	Woodworking	84	-7	75	-51
BIS	Bus Info Sys	4,312	-9	-18	-52
IND	Industrial Sciences	116	25	-55	-54
GRN	Gerontology	162	-30	-70	-55
CNS	Counseling	806	-23	-39	-55
CSC	Community Service Course	3,256	33	-48	-58
TER	Climate Control Tech	727	-12	-40	-58
SSC	Social Science	2,517	18	-23	-58
VBT	Vehicle Body	520	-7	-42	-59
CIM	Computer Integrated Mfg.	124	-58	-23	-74
FLT	Aviation Flight Tech	251	-20	-62	-74
FSH	Found Stud./Humanities	800	-30	-33	-74
KEH	Kind., Elementary, High Sch	79	-11	8	-80
APD	Apprentice Drafting	171	10	-46	-81
TED	Pre-Apprentice Drafting	117	-15	-64	-82
FSS	Found Stud./Soc.Science	128	-51	-43	-83
PPI	Public Professional Inst.	12	100	100	-83
JOR	Journalism	22	633	-54	-85
ETT	Electrical Trades Tech	256	-12	41	-85
RET	Retailing	90	50	-72	-86
QAT	Quality Assurance Tech	78	-4	-92	-87
COM	Communications	18	200	-96	-98
AET	Alternative Energy Tech	4	-94	100	-98

Oakland Community College
Trend in Total Student Credit Hours
Top 5 SCH-Generating Disciplines
1989-90 through 1998-99

*ENG
line
formatted
solid*



**Oakland Community College
Student Credit Hours by Cluster
(1998-99)**

**Clusters Ranked by
1998-99 Credit Hours**

Cluster	1998-99 SCH	% of Total
Math & Sciences	100,017	23
Humanities & Language	93,660	21
Social Science	73,318	17
Business	71,751	16
Public Services	40,448	9
Commercial & Fine Arts	20,135	5
Allied Health	20,075	5
Automotive Technologies	16,265	4
Non-Automotive Technologies	4,779	1
GRAND TOTAL	440,448	100

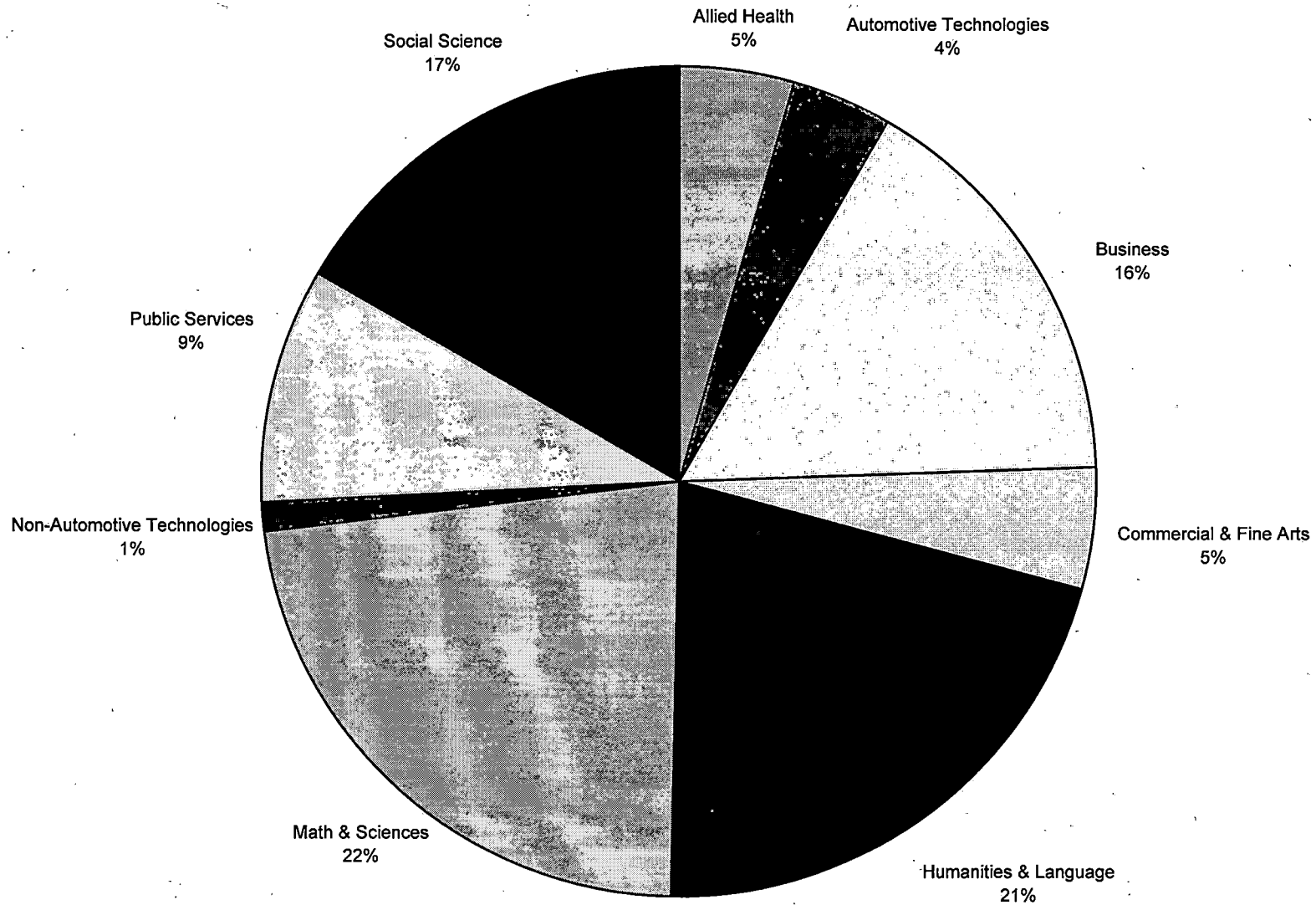
**Clusters Ranked by
Five Year Percent Change**

Cluster	1998-99 SCH	% of Total	5- Year % Change
Commercial & Fine Arts	20,135	5	9
Business	71,751	16	5
Humanities & Language	93,660	21	-3
Social Science	73,318	17	-8
Public Services	40,448	9	-9
Math & Sciences	100,017	23	-12
Automotive Technologies	16,265	4	-14
Allied Health	20,075	5	-17
Non-Automotive Technologies	4,779	1	-32
GRAND TOTALS	440,448	100	-7

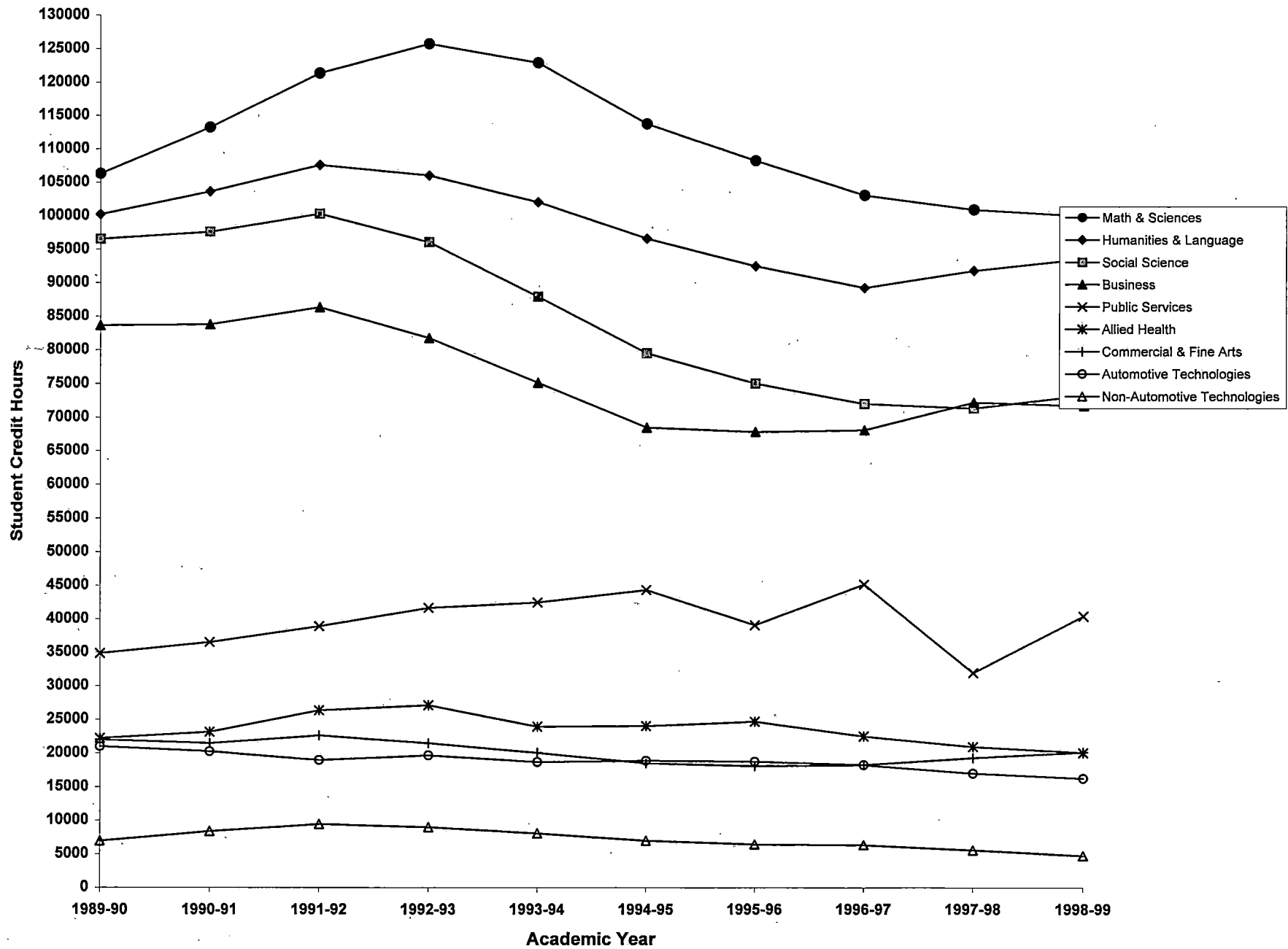
**Clusters Ranked by
Ten Year Percent Change**

Cluster	1998-99 SCH	% of Total	10- Year % Change
Public Services	31,984	7	16
Math & Sciences	101,012	23	-6
Humanities & Language	91,881	21	-7
Commercial & Fine Arts	19,328	4	-8
Allied Health	20,961	5	-10
Business	72,273	17	-14
Automotive Technologies	17,052	4	-22
Social Science	71,417	17	-24
Non-Automotive Technologies	5,613	1	-31
GRAND TOTALS	431,521	100	-11

**Oakland Community College
Student Credit Hours By Cluster
1998-99**

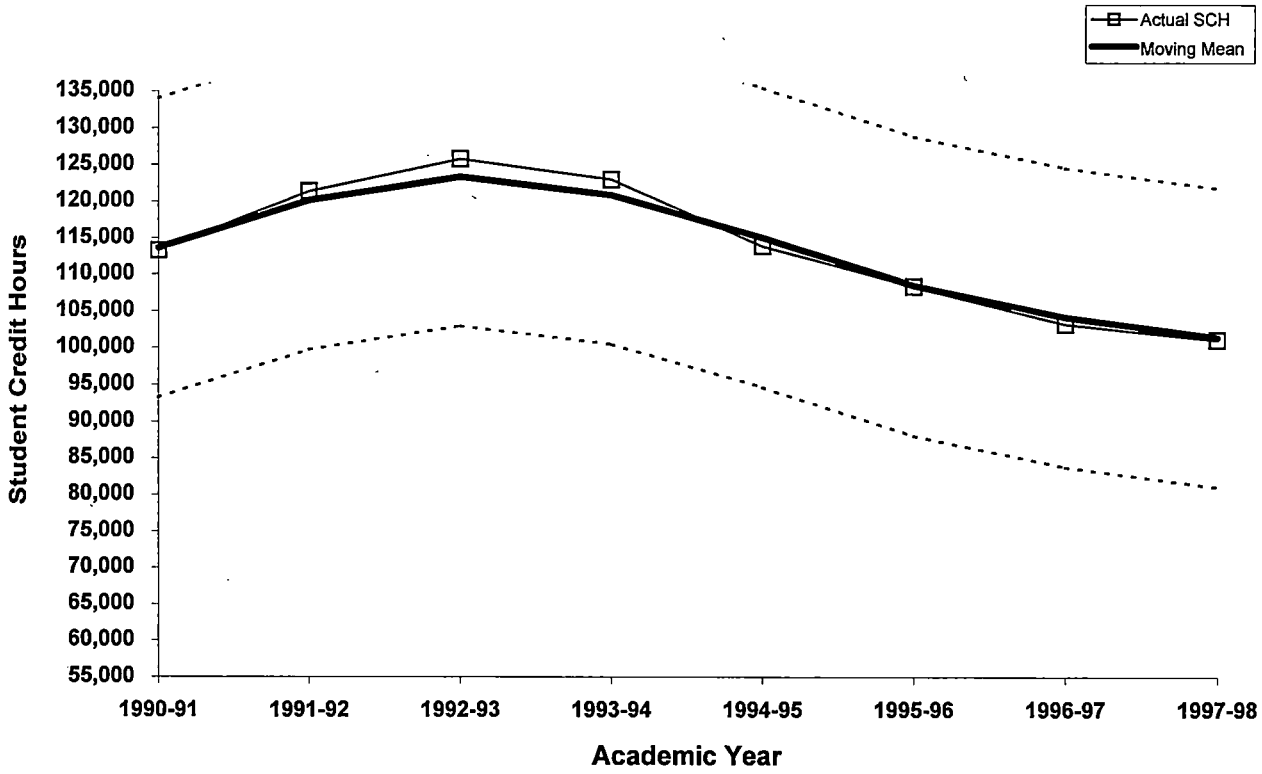


**Oakland Community College
Student Credit Hours By Cluster
1989-90 Through 1998-99**

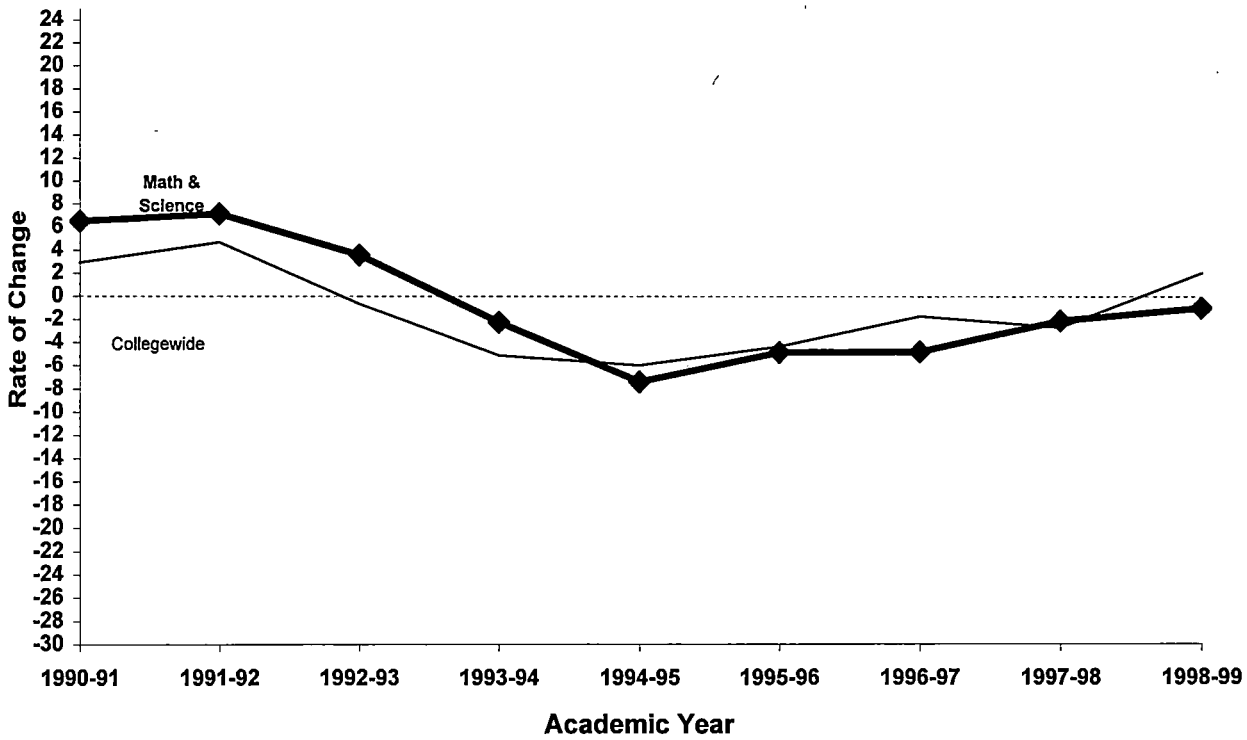


**Oakland Community College
Math & Sciences Cluster
1989-90 through 1998-99**

3-Year Moving Mean 1989-90 through 1997-98

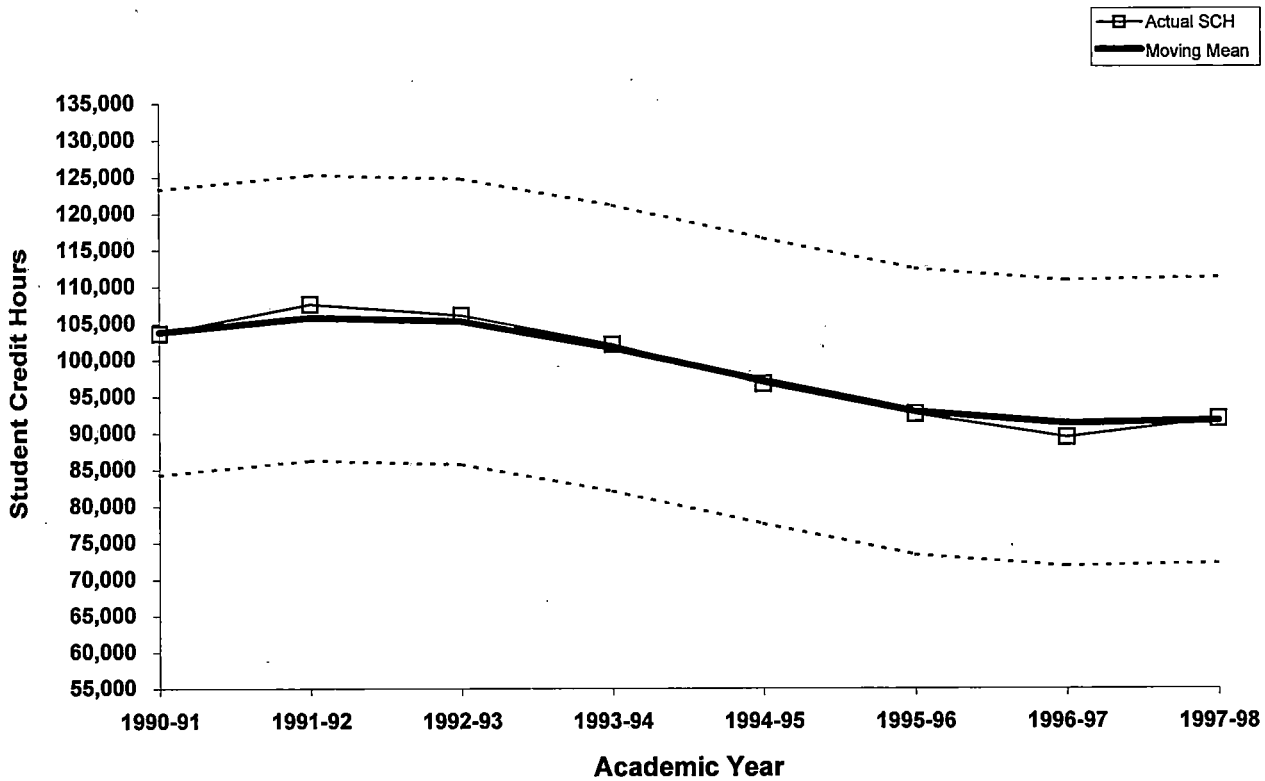


Rate of Change in Student Credit Hours 1990-91 through 1998-99

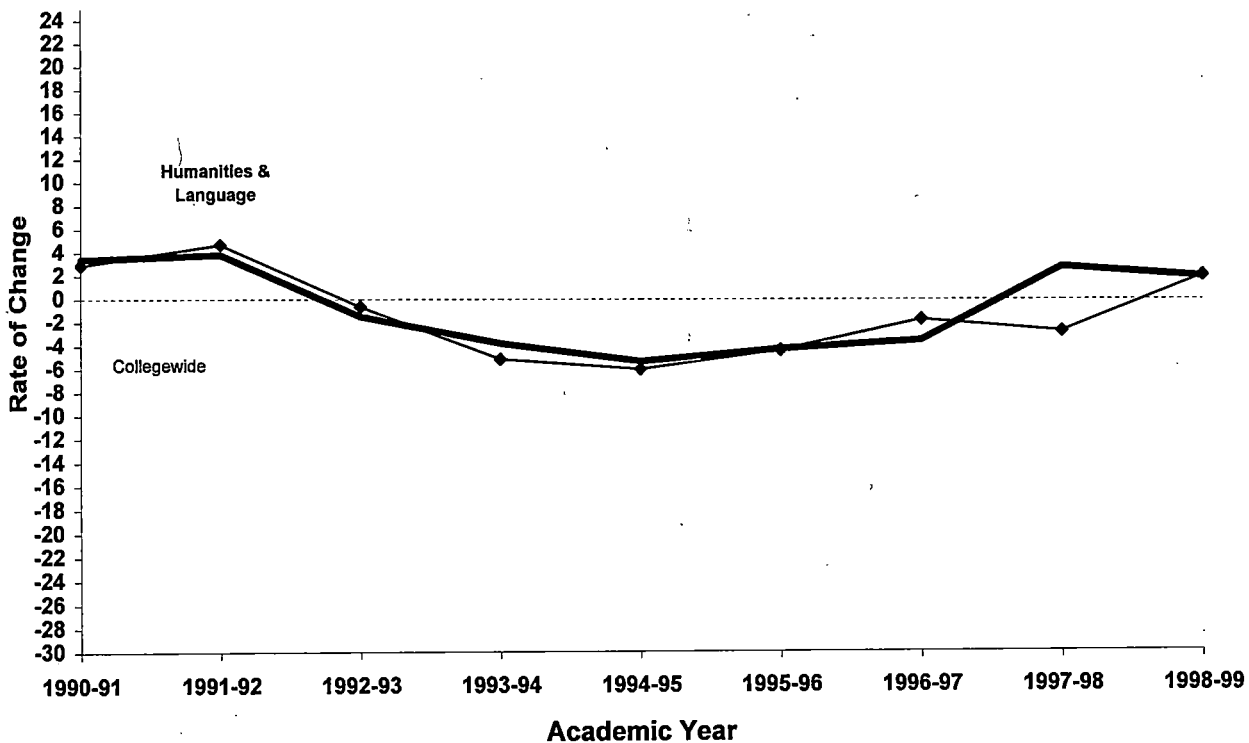


Oakland Community College
 Humanities & Language Cluster
 1990-91 through 1998-99

3-Year Moving Mean 1990-91 through 1997-98

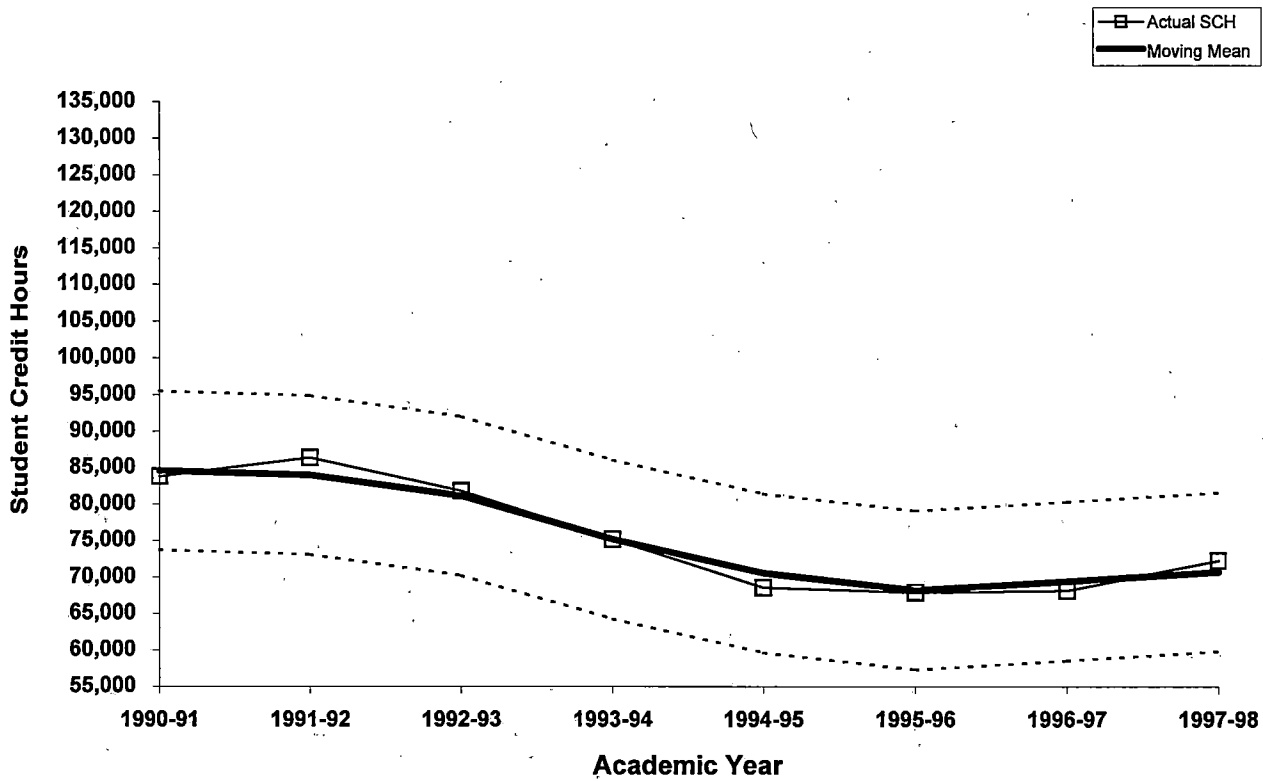


Rate of Change in Student Credit Hours 1990-91 through 1998-99

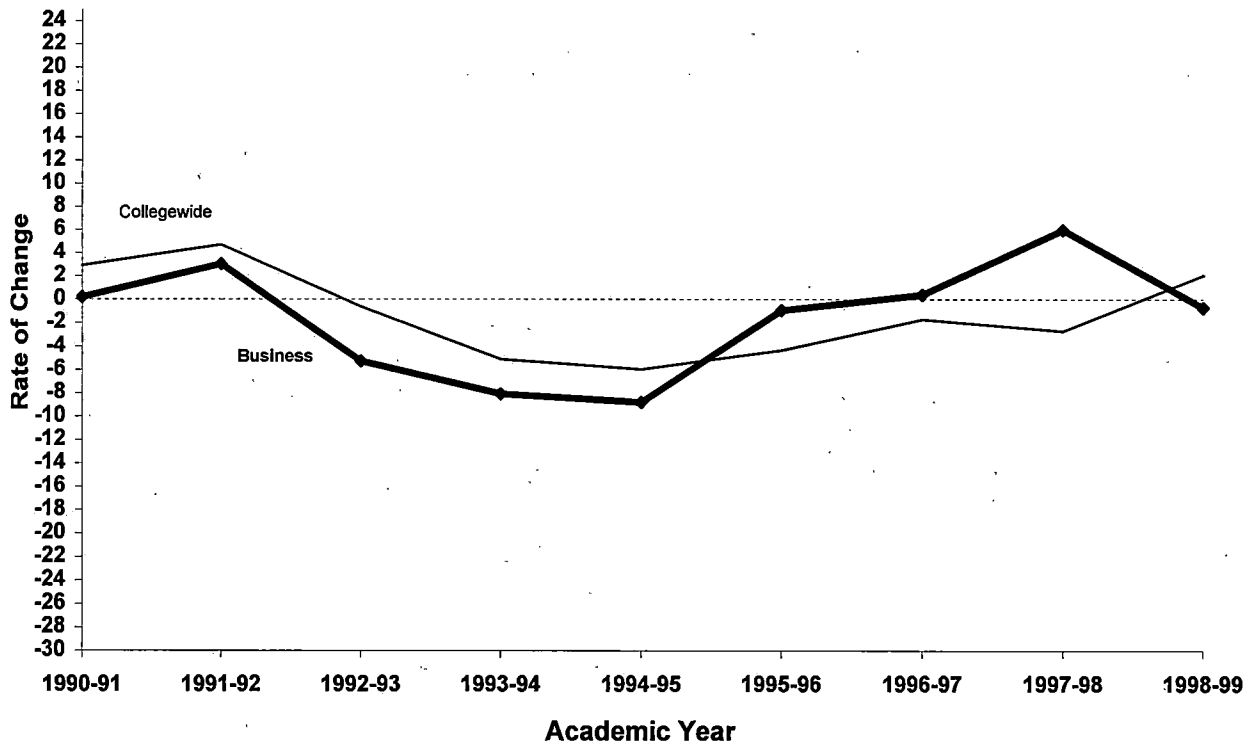


**Oakland Community College
Business Cluster
1990-91 through 1998-99**

3-Year Moving Mean 1990-91 through 1997-98

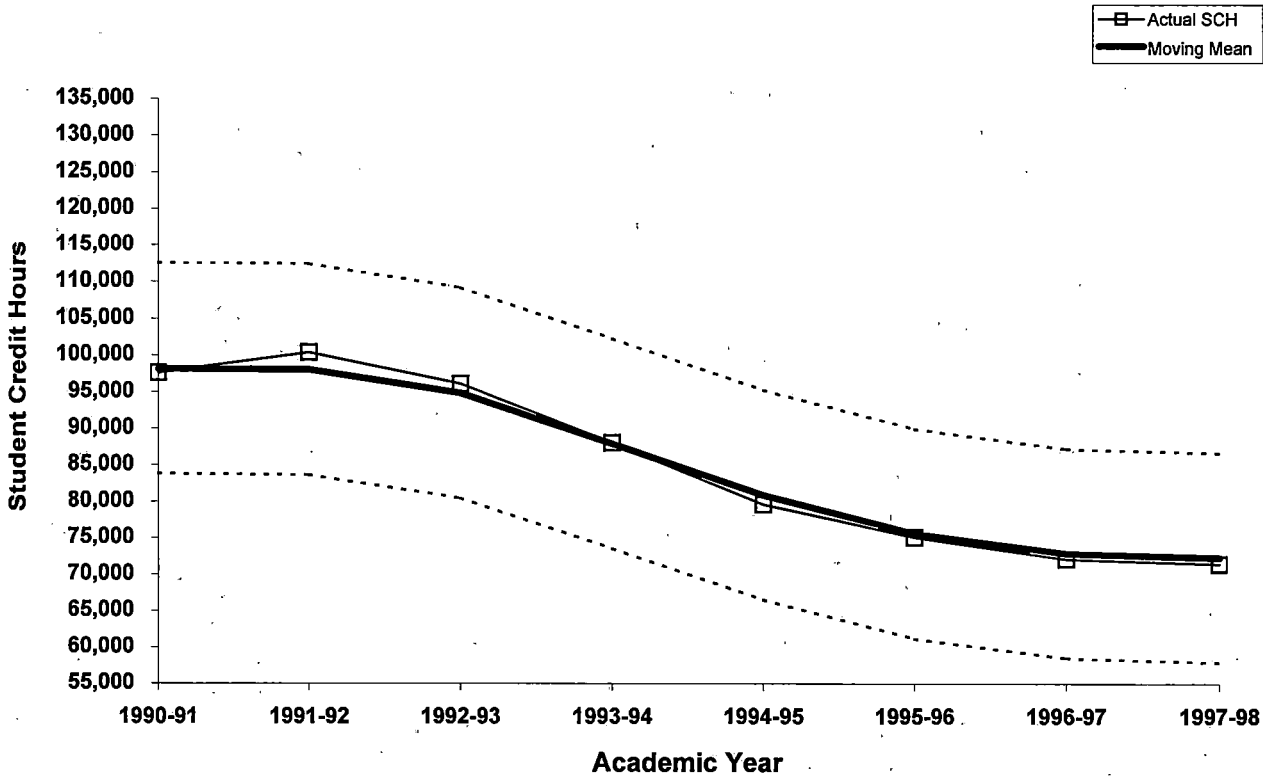


Rate of Change in Student Credit Hours 1990-91 through 1998-99

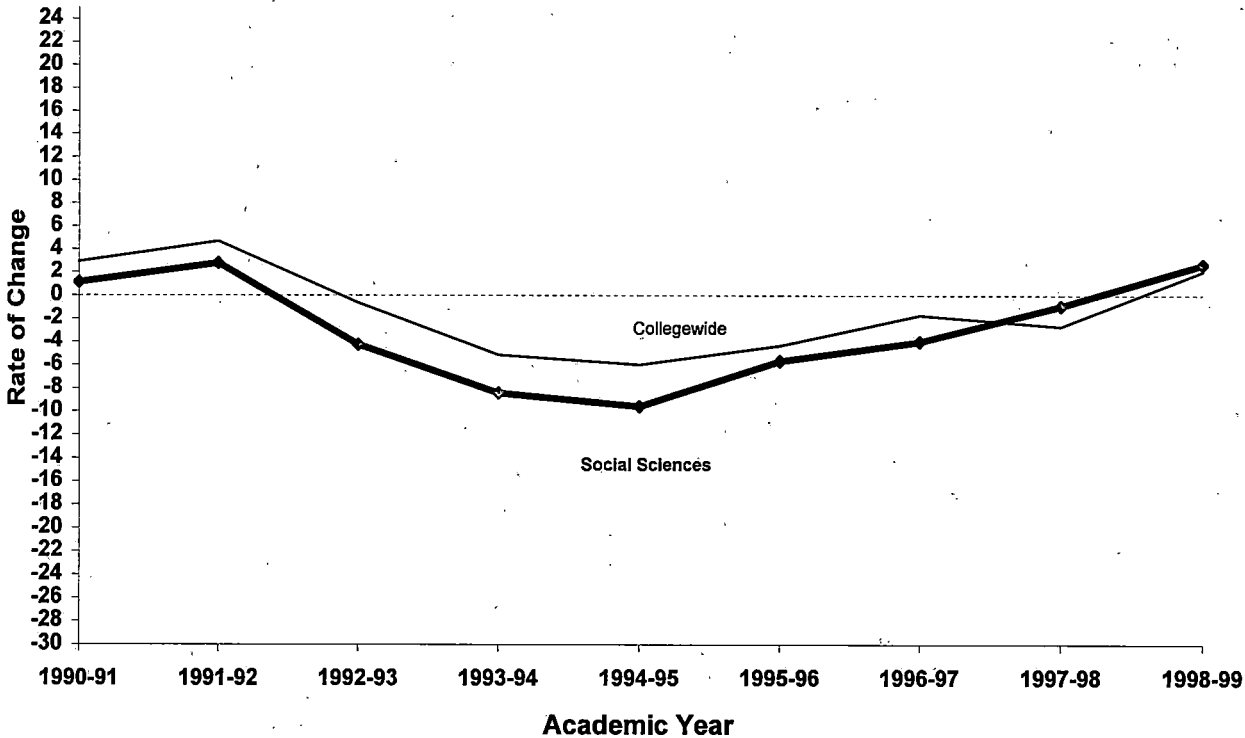


Oakland Community College
 Social Science Cluster
 1990-91 through 1998-99

3-Year Moving Mean 1990-91 through 1997-98

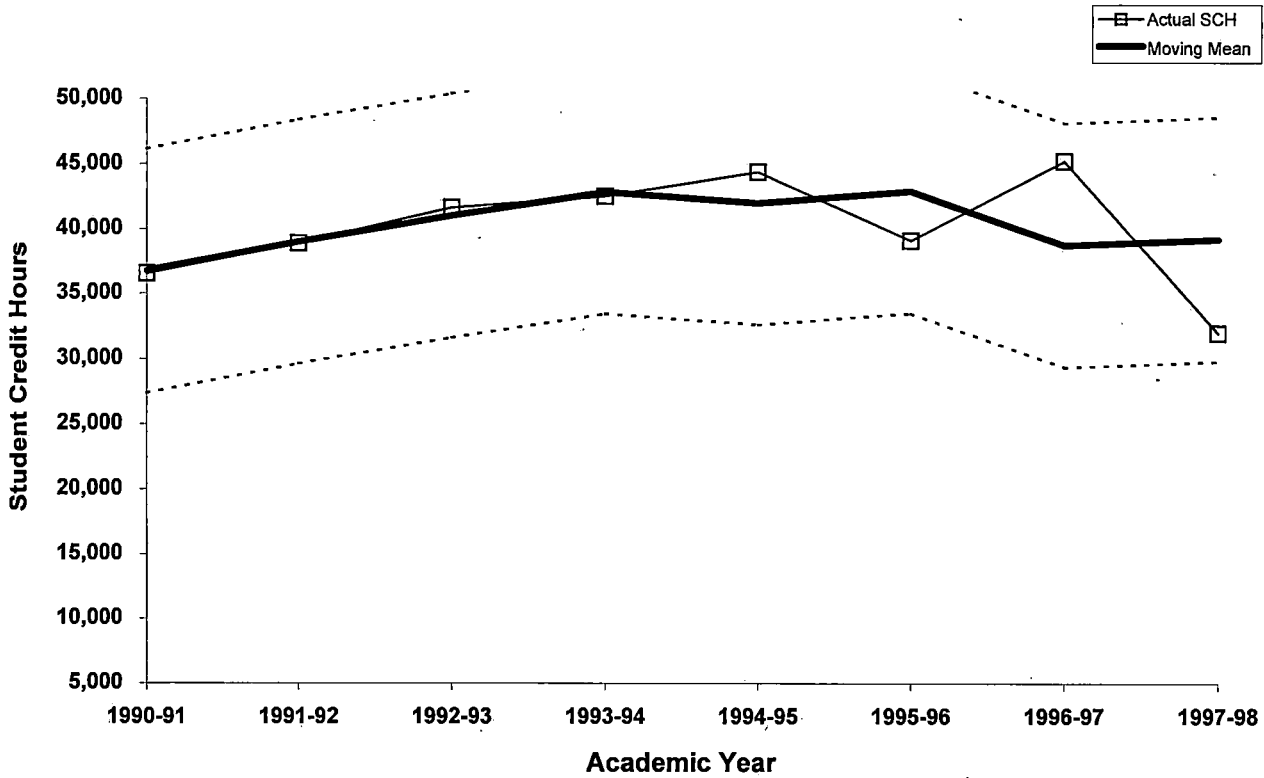


Rate of Change in Student Credit Hours 1990-91 through 1998-99

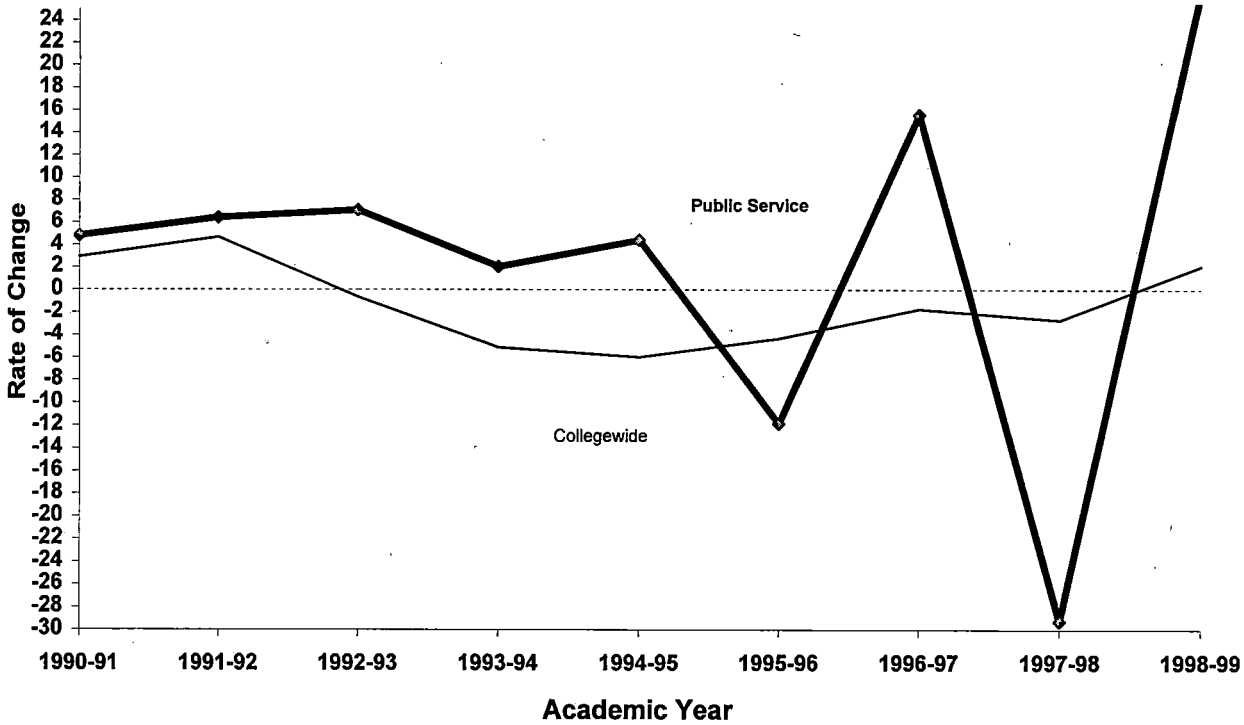


Oakland Community College
Public Services Cluster
1990-91 through 1998-99

3-Year Moving Mean 1990-91 through 1997-98

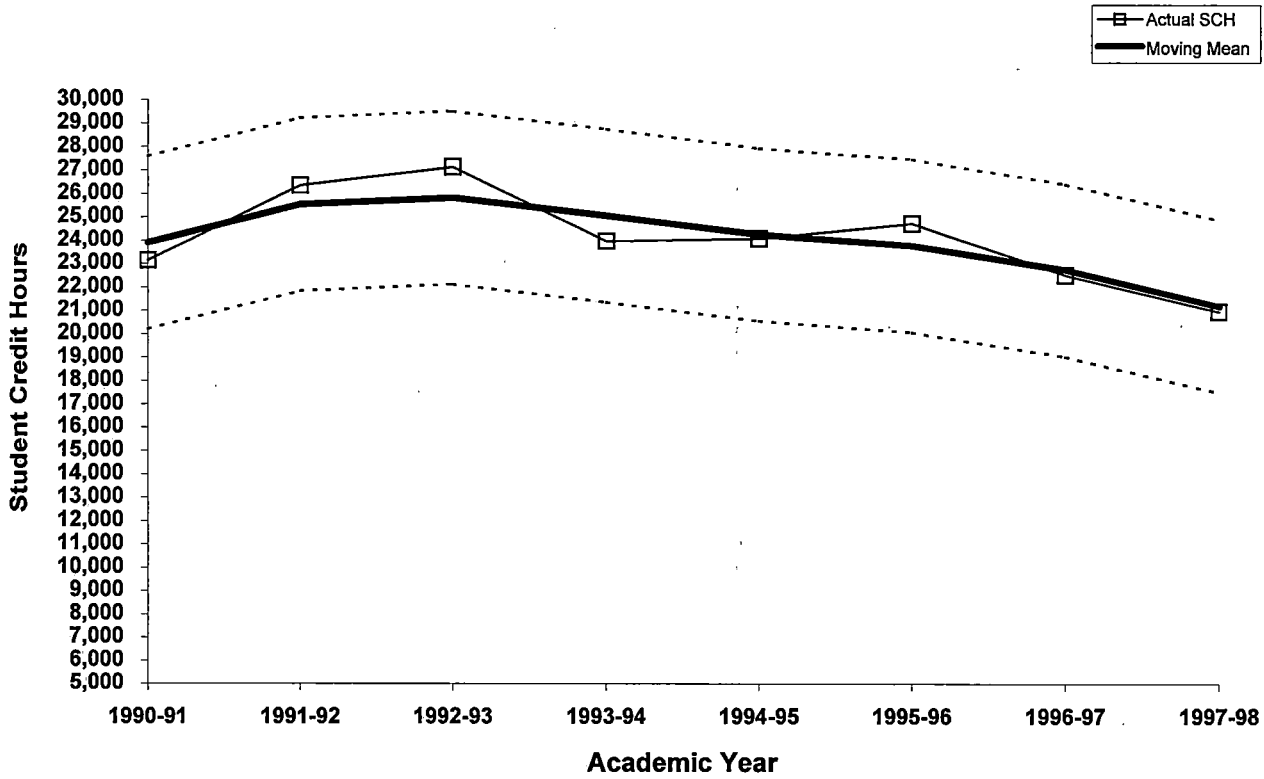


Rate of Change in Student Credit Hours 1990-91 through 1998-99

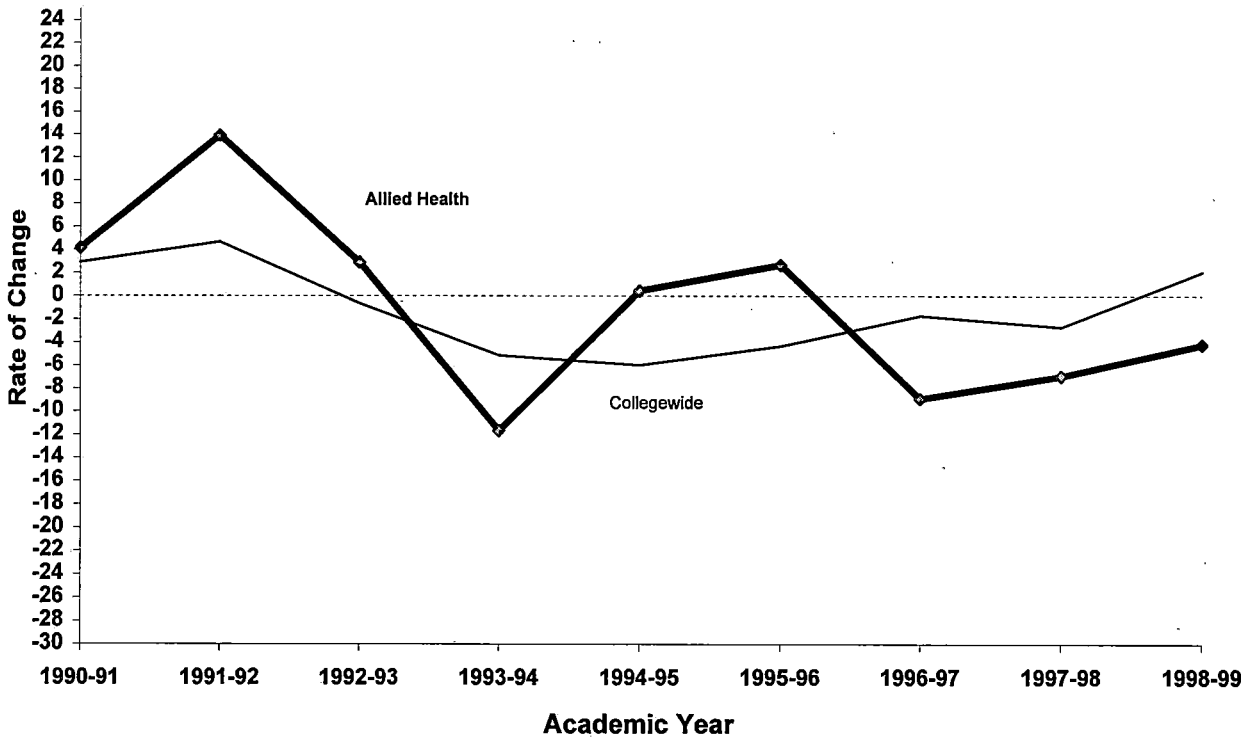


Oakland Community College
 Allied Health Cluster
 1990-91 through 1998-99

3-Year Moving Mean 1990-91 through 1997-98

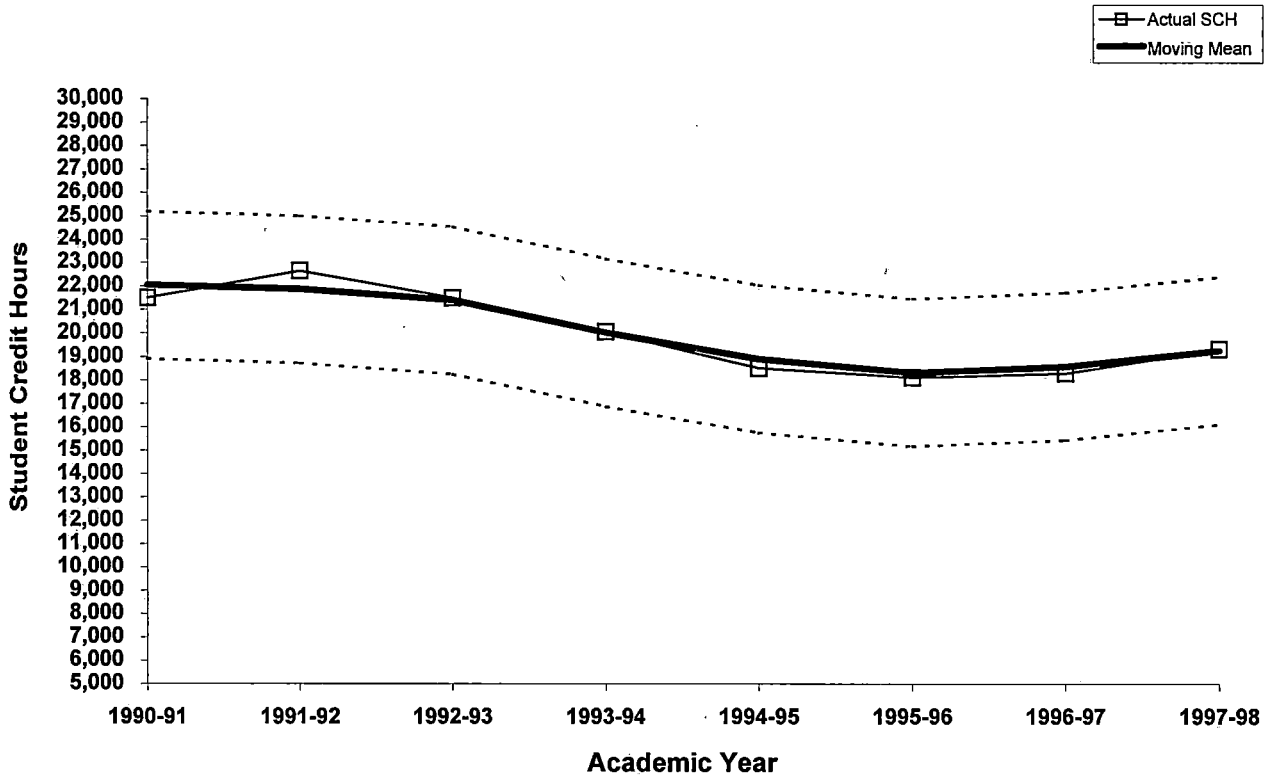


Rate of Change in Student Credit Hours 1990-91 through 1998-99

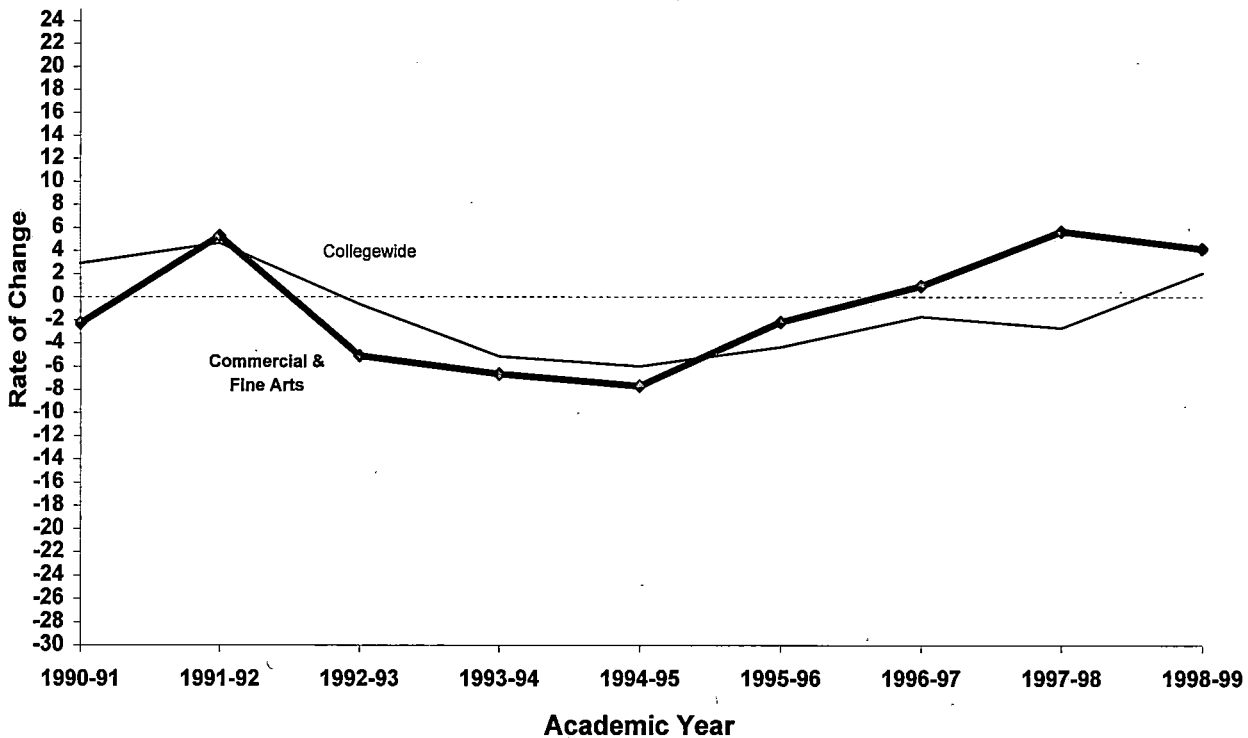


Oakland Community College
 Commercial & Fine Arts Cluster
 1990-91 through 1998-99

3-Year Moving Mean 1990-91 through 1997-98

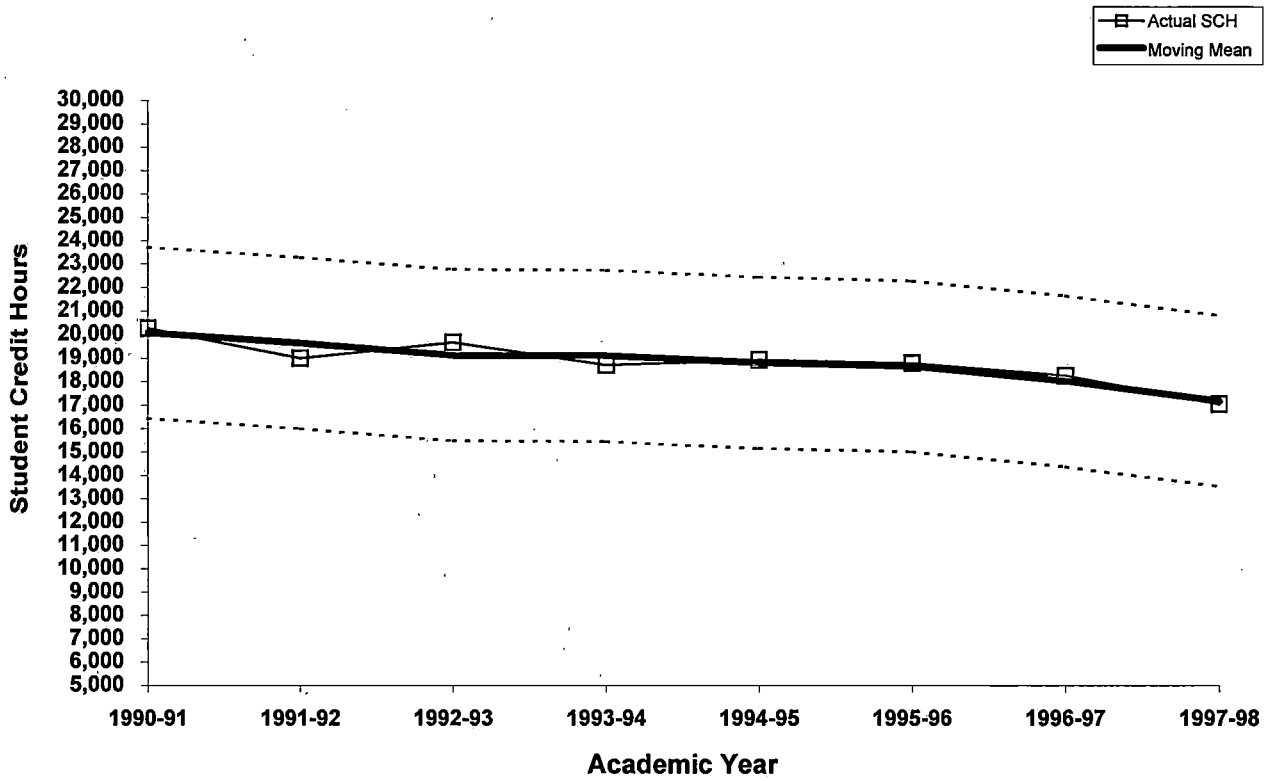


Rate of Change in Student Credit Hours 1990-91 through 1998-99

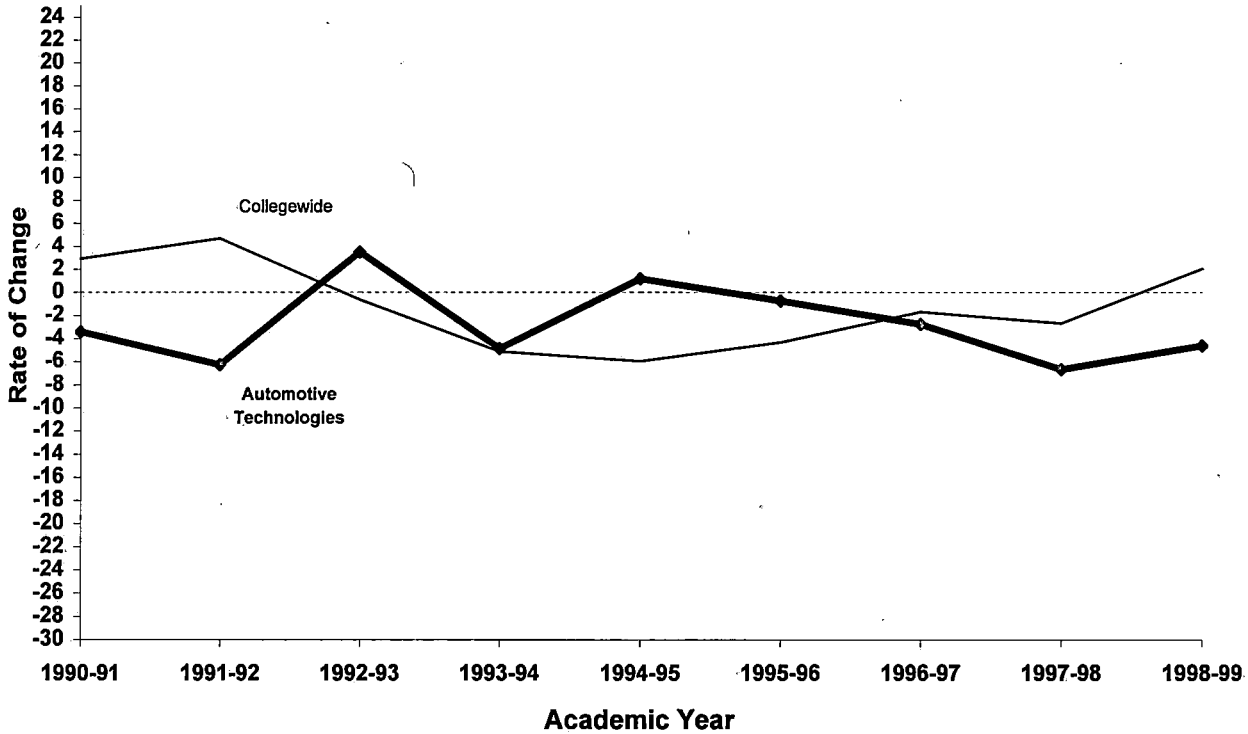


**Oakland Community College
Automotive Technologies Cluster
1990-91 through 1998-99**

3-Year Moving Mean 1990-91 through 1997-98

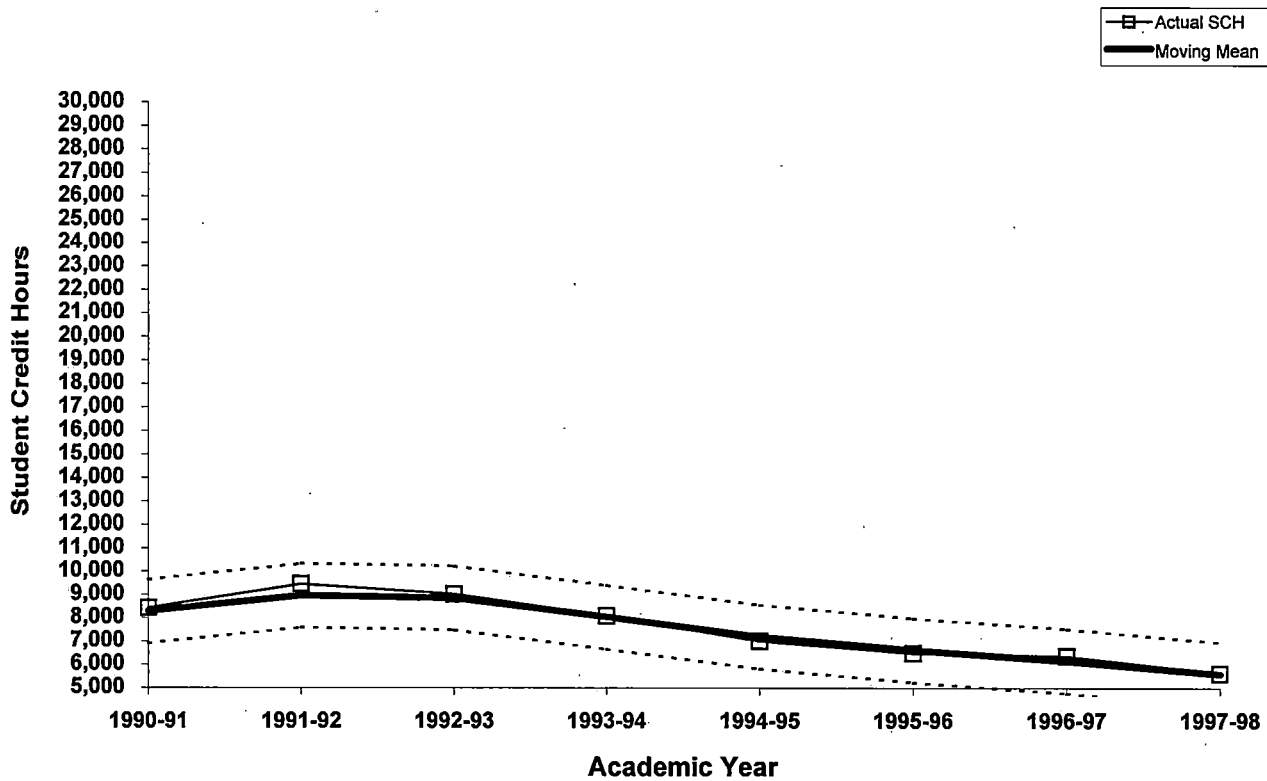


Rate of Change in Student Credit Hours 1990-91 through 1998-99



Oakland Community College
 Non-Automotive Technologies Cluster
 1990-91 through 1998-99

3-Year Moving Mean 1990-91 through 1997-98



Rate of Change in Student Credit Hours 1990-91 through 1998-99

