



MEMORANDUM

To: Prentice Ryan,
Athletic Director

From: Martin A. Orlowski, Director,
Office of Institutional Planning & Analysis

Subject: 1992-93 Athletics Report

Date: November 19, 1993

The Office of Institutional Planning & Analysis has completed the 1992-93 Athletics report. This report compares athletic scholarship recipients to non-athletic scholarship recipients. Comparisons are based on cumulative grade point average, number of credits attempted, and number of credits completed during academic year 1992-93.

Highlights from this year's report include:

- A total of 93 athletes were evaluated in this report of which thirty-nine (42%) were male and 54 (58%) were female. Sixty-six (71%) of these athletes received athletic scholarships. Among athletes whose ethnicity is known, 9.3% are African-American, 3.5% are Hispanic, and 87.2% are White. Based on Fall 1993 enrollment data College-wide percentages are 11.6% African-American, 1.8% Hispanic, 2.3% Asian, 0.7% Native American and 83.6% White.
- Average GPA (cumulative) for athletes receiving scholarships was slightly lower (2.744) than for those athletes not receiving scholarships (2.857).
- During academic year 1992-93 scholarship recipients attempted an average of 21.2 credit hours, while non-scholarship athletes attempted an average of 24.6 credits. This suggests that the non-scholarship group may be attempting one more class over the course of the year than the scholarship athletes.
- The completion rate for both groups was comparable, 93.1% for scholarship and 94% for non-scholarship athletes.
- Generally, non-scholarship athletes academically perform at slightly higher levels than scholarship athletes. However, this finding is not necessarily true when individual sports are analyzed.

If you have any questions pertaining to this report, please do not hesitate to call me at 7746.

pc: D. Jaksen

Attachment: 1992-93 Athletics Report
/s

**Oakland Community College
Athletics Report
(1992-93)**

	<u>Scholarship</u>	<u>Non-Scholarship</u>
Mens Basketball		
Cumulative G.P.A.	2.705	2.464
Attempted Credits	23.6	23.3
Completed Credits	22.8	21.3
Credit Completion Ratio	97.8%	90.0%
Subtotal	9	4
Mens Cross Country		
Cumulative G.P.A.	2.600	2.331
Attempted Credits	18.0	21.8
Completed Credits	16.0	20.3
Credit Completion Ratio	85.7%	92.3%
Subtotal	5	4
Mens Golf		
Cumulative G.P.A.	2.316	3.122
Attempted Credits	18.4	28.0
Completed Credits	16.8	28.0
Credit Completion Ratio	91.5%	100.0%
Subtotal	5	5
Mens Tennis		
Cumulative G.P.A.	2.828	0.000
Attempted Credits	23.4	0.0
Completed Credits	22.1	0.0
Credit Completion Ratio	93.9%	0.0%
Subtotal	7	0
Womens Basketball		
Cumulative G.P.A.	2.956	2.905
Attempted Credits	23.0	22.0
Completed Credits	22.6	20.5
Credit Completion Ratio	98.4%	93.5%
Subtotal	8	4
Womens Cross Country		
Cumulative G.P.A.	3.060	1.978
Attempted Credits	13.9	26.0
Completed Credits	12.0	23.0
Credit Completion Ratio	85.8%	88.5%
Subtotal	7	1
Womens Softball		
Cumulative G.P.A.	2.417	3.261
Attempted Credits	22.5	24.3
Completed Credits	19.9	23.3
Credit Completion Ratio	88.3%	95.2%
Subtotal	14	4

GET FILE='I:\ATHLETIC\ATHLETIC.SYS'.

The SPSS/PC+ system file is read from
file I:\ATHLETIC\ATHLETIC.SYS

The file was created on 11/16/93 at 14:32:48
and is titled ATHLETICS COMMAND FILE

The SPSS/PC+ system file contains

100 cases, each consisting of

30 variables (including system variables).

30 variables will be used in this session.

This procedure was completed at 14:39:31

SELECT IF (SSN GT 000000001).

SELECT IF (SSN LT 999999999).

SELECT IF (COHORT EQ 9293).

SELECT IF (TOTATT GT 000.0).

FREQUENCIES VARIABLES=CUMGPA AWARD TO RACE TOTATT TOTCOMP RATIO/BARGRAPH.

The raw data or transformation pass is proceeding

93 cases are written to the compressed active file.

***** Memory allows a total of 17873 Values, accumulated across all Variables.

There also may be up to 2234 Value Labels for each Variable.

CUMGPA CUMULATIVE G.P.A.

Value Label	Value	Frequency	Percent	Valid Percent	Cum Percent
	1.250	1	1.1	1.1	1.1
	1.342	1	1.1	1.1	2.2
	1.452	1	1.1	1.1	3.2
	1.550	2	2.2	2.2	5.4
	1.600	1	1.1	1.1	6.5
	1.607	1	1.1	1.1	7.5
	1.638	1	1.1	1.1	8.6
	1.656	1	1.1	1.1	9.7
	1.826	1	1.1	1.1	10.8
	1.978	1	1.1	1.1	11.8
	2.072	1	1.1	1.1	12.9
	2.096	1	1.1	1.1	14.0
	2.101	1	1.1	1.1	15.1
	2.157	1	1.1	1.1	16.1
	2.187	1	1.1	1.1	17.2
	2.228	1	1.1	1.1	18.3
	2.241	1	1.1	1.1	19.4
	2.250	2	2.2	2.2	21.5
	2.276	1	1.1	1.1	22.6
	2.296	1	1.1	1.1	23.7
	2.320	1	1.1	1.1	24.7
	2.347	1	1.1	1.1	25.8
	2.435	1	1.1	1.1	26.9
	2.453	1	1.1	1.1	28.0
	2.468	1	1.1	1.1	29.0
	2.479	1	1.1	1.1	30.1
	2.480	1	1.1	1.1	31.2
	2.486	1	1.1	1.1	32.3
	2.500	1	1.1	1.1	33.3
	2.547	1	1.1	1.1	34.4
	2.553	1	1.1	1.1	35.5
	2.567	1	1.1	1.1	36.6
	2.571	2	2.2	2.2	38.7
	2.642	1	1.1	1.1	39.8
	2.651	1	1.1	1.1	40.9
	2.653	1	1.1	1.1	41.9
	2.660	1	1.1	1.1	43.0
	2.662	1	1.1	1.1	44.1
	2.687	1	1.1	1.1	45.2
	2.700	1	1.1	1.1	46.2
	2.714	1	1.1	1.1	47.3
	2.814	1	1.1	1.1	48.4
	2.827	1	1.1	1.1	49.5
	2.833	1	1.1	1.1	50.5
	2.846	1	1.1	1.1	51.6
	2.857	1	1.1	1.1	52.7
	2.876	1	1.1	1.1	53.8
	2.880	1	1.1	1.1	54.8
	2.909	1	1.1	1.1	55.9
	2.916	1	1.1	1.1	57.0

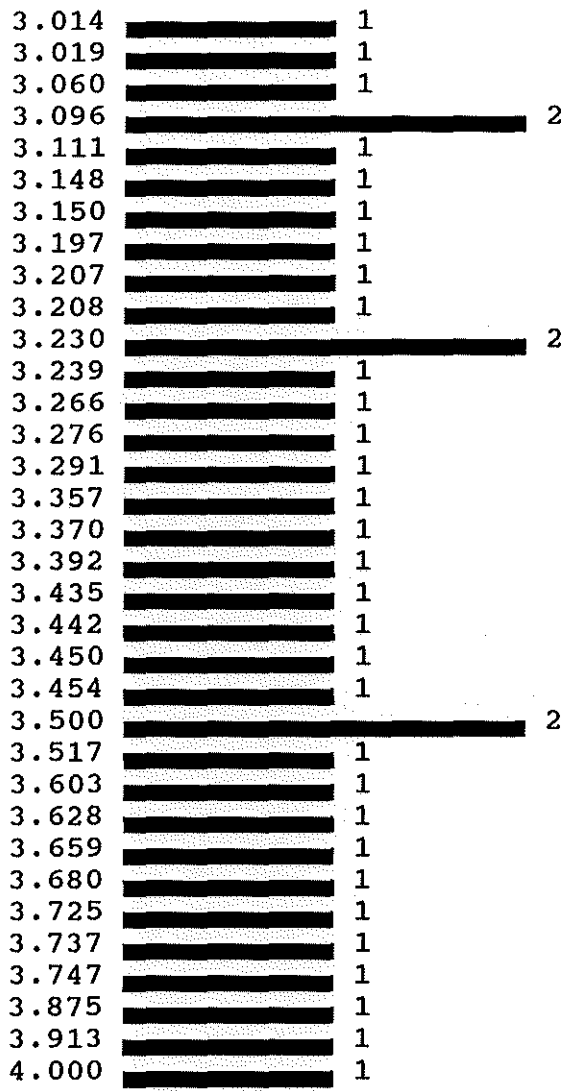
CUMGPA CUMULATIVE G.P.A.

2.940	1	1.1	1.1	58.1
2.955	1	1.1	1.1	59.1
3.013	1	1.1	1.1	60.2
3.014	1	1.1	1.1	61.3
3.019	1	1.1	1.1	62.4
3.060	1	1.1	1.1	63.4
3.096	2	2.2	2.2	65.6
3.111	1	1.1	1.1	66.7
3.148	1	1.1	1.1	67.7
3.150	1	1.1	1.1	68.8
3.197	1	1.1	1.1	69.9
3.207	1	1.1	1.1	71.0
3.208	1	1.1	1.1	72.0
3.230	2	2.2	2.2	74.2
3.239	1	1.1	1.1	75.3
3.266	1	1.1	1.1	76.3
3.276	1	1.1	1.1	77.4
3.291	1	1.1	1.1	78.5
3.357	1	1.1	1.1	79.6
3.370	1	1.1	1.1	80.6
3.392	1	1.1	1.1	81.7
3.435	1	1.1	1.1	82.8
3.442	1	1.1	1.1	83.9
3.450	1	1.1	1.1	84.9
3.454	1	1.1	1.1	86.0
3.500	2	2.2	2.2	88.2
3.517	1	1.1	1.1	89.2
3.603	1	1.1	1.1	90.3
3.628	1	1.1	1.1	91.4
3.659	1	1.1	1.1	92.5
3.680	1	1.1	1.1	93.5
3.725	1	1.1	1.1	94.6
3.737	1	1.1	1.1	95.7
3.747	1	1.1	1.1	96.8
3.875	1	1.1	1.1	97.8
3.913	1	1.1	1.1	98.9
4.000	1	1.1	1.1	100.0
	-----	-----	-----	
Total	93	100.0	100.0	

CUMGPA CUMULATIVE G.P.A.

1.250	█	1
1.342	█	1
1.452	█	1
1.550	████████████████████	2
1.600	█	1
1.607	█	1
1.638	█	1
1.656	█	1
1.826	█	1
1.978	█	1
2.072	█	1
2.096	█	1
2.101	█	1
2.157	█	1
2.187	█	1
2.228	█	1
2.241	█	1
2.250	████████████████████	2
2.276	█	1
2.296	█	1
2.320	█	1
2.347	█	1
2.435	█	1
2.453	█	1
2.468	█	1
2.479	█	1
2.480	█	1
2.486	█	1
2.500	█	1
2.547	█	1
2.553	█	1
2.567	█	1
2.571	████████████████████	2
2.642	█	1
2.651	█	1
2.653	█	1
2.660	█	1
2.662	█	1
2.687	█	1
2.700	█	1
2.714	█	1
2.814	█	1
2.827	█	1
2.833	█	1
2.846	█	1
2.857	█	1
2.876	█	1
2.880	█	1
2.909	█	1
2.916	█	1
2.940	█	1
2.955	█	1
3.013	█	1

CUMGPA CUMULATIVE G.P.A.



Valid cases

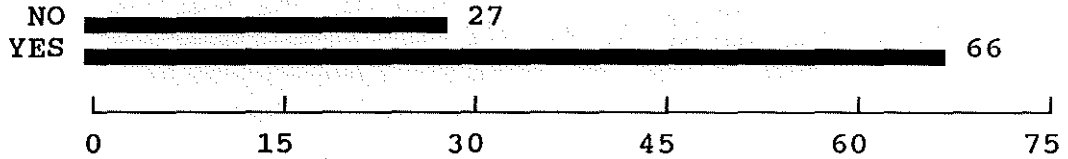
93

Missing cases

0

AWARD Scholarship received

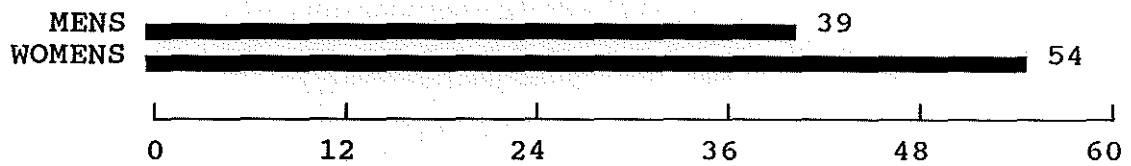
Value Label	Value	Frequency	Percent	Valid Percent	Cum Percent
NO	0	27	29.0	29.0	29.0
YES	1	66	71.0	71.0	100.0
		-----	-----	-----	
	Total	93	100.0	100.0	



Valid cases 93 Missing cases 0

SPORTSEX Men or Womens sport

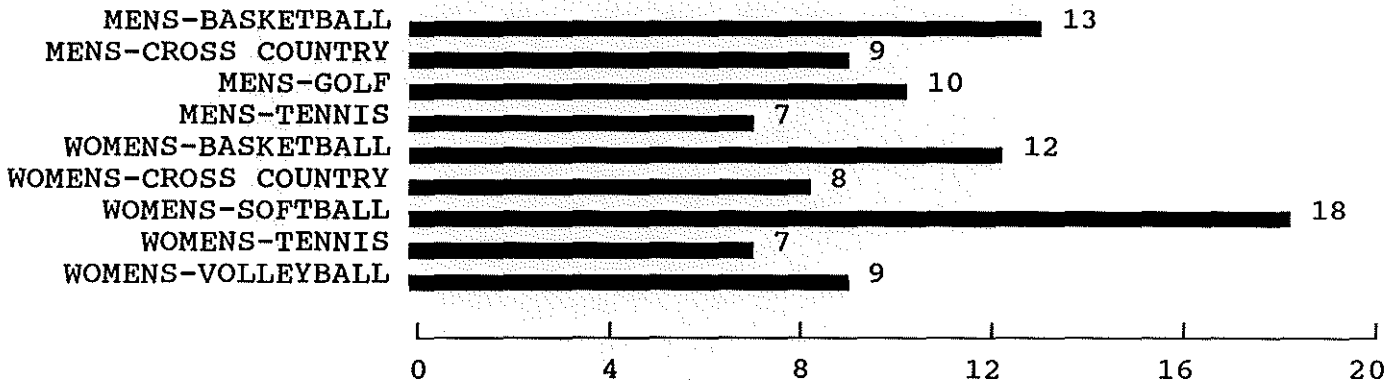
Value Label	Value	Frequency	Percent	Valid Percent	Cum Percent
MENS	M	39	41.9	41.9	41.9
WOMENS	W	54	58.1	58.1	100.0
		-----	-----	-----	
	Total	93	100.0	100.0	



Valid cases 93 Missing cases 0

SPORT1 Sport: active in #1

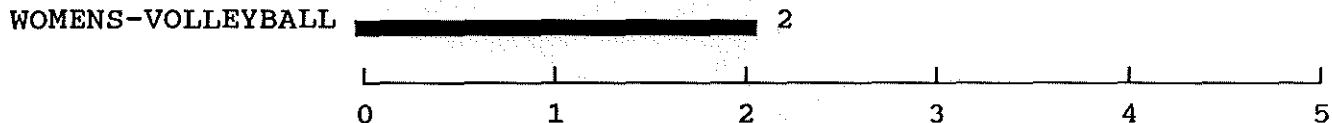
Value Label	Value	Frequency	Percent	Valid Percent	Cum Percent
MENS-BASKETBALL	MB	13	14.0	14.0	14.0
MENS-CROSS COUNTRY	MC	9	9.7	9.7	23.7
MENS-GOLF	MG	10	10.8	10.8	34.4
MENS-TENNIS	MT	7	7.5	7.5	41.9
WOMENS-BASKETBALL	WB	12	12.9	12.9	54.8
WOMENS-CROSS COUNTRY	WC	8	8.6	8.6	63.4
WOMENS-SOFTBALL	WS	18	19.4	19.4	82.8
WOMENS-TENNIS	WT	7	7.5	7.5	90.3
WOMENS-VOLLEYBALL	WV	9	9.7	9.7	100.0
Total		93	100.0	100.0	



Valid cases 93 Missing cases 0

SPORT2 Sport: active in #2

Value Label	Value	Frequency	Percent	Valid Percent	Cum Percent
WOMENS-VOLLEYBALL	WV	2	2.2	100.0	100.0
DOES NOT APPLY	XX	91	97.8	Missing	
	Total	93	100.0	100.0	



Valid cases 2 Missing cases 91

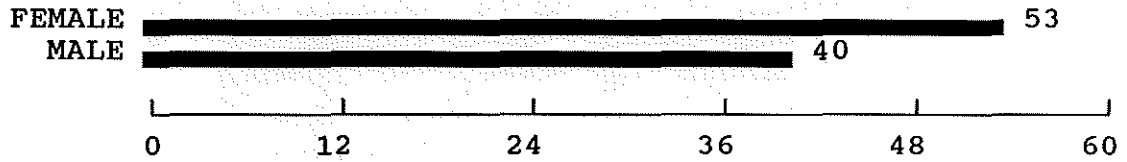
SPORT3 Sport: active in #3

Value Label	Value	Frequency	Percent	Valid Percent	Cum Percent
DOES NOT APPLY	XX	93	100.0	Missing	
	Total	93	100.0	100.0	

Valid cases 0 Missing cases 93

SEX Students gender

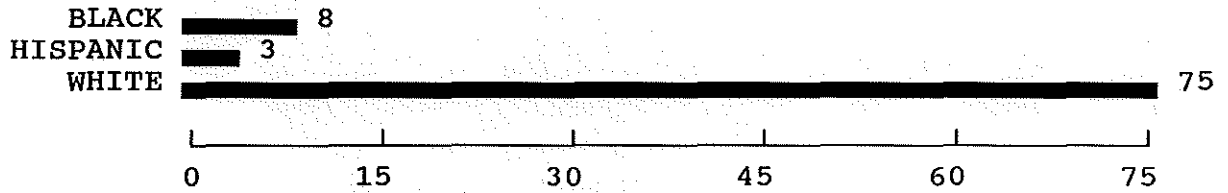
Value Label	Value	Frequency	Percent	Valid Percent	Cum Percent
FEMALE	F	53	57.0	57.0	57.0
MALE	M	40	43.0	43.0	100.0
	Total	93	100.0	100.0	



Valid cases 93 Missing cases 0

RACE Students race

Value Label	Value	Frequency	Percent	Valid Percent	Cum Percent	<i>College.</i>
BLACK	B	8	8.6	9.3	9.3	AA-10.9
HISPANIC	H	3	3.2	3.5	12.8	Asian 1.5
WHITE	W	75	80.6	87.2	100.0	Hispanic 1.6
UNKNOWN	X	7	7.5	Missing		White 85.5
Total		93	100.0	100.0		

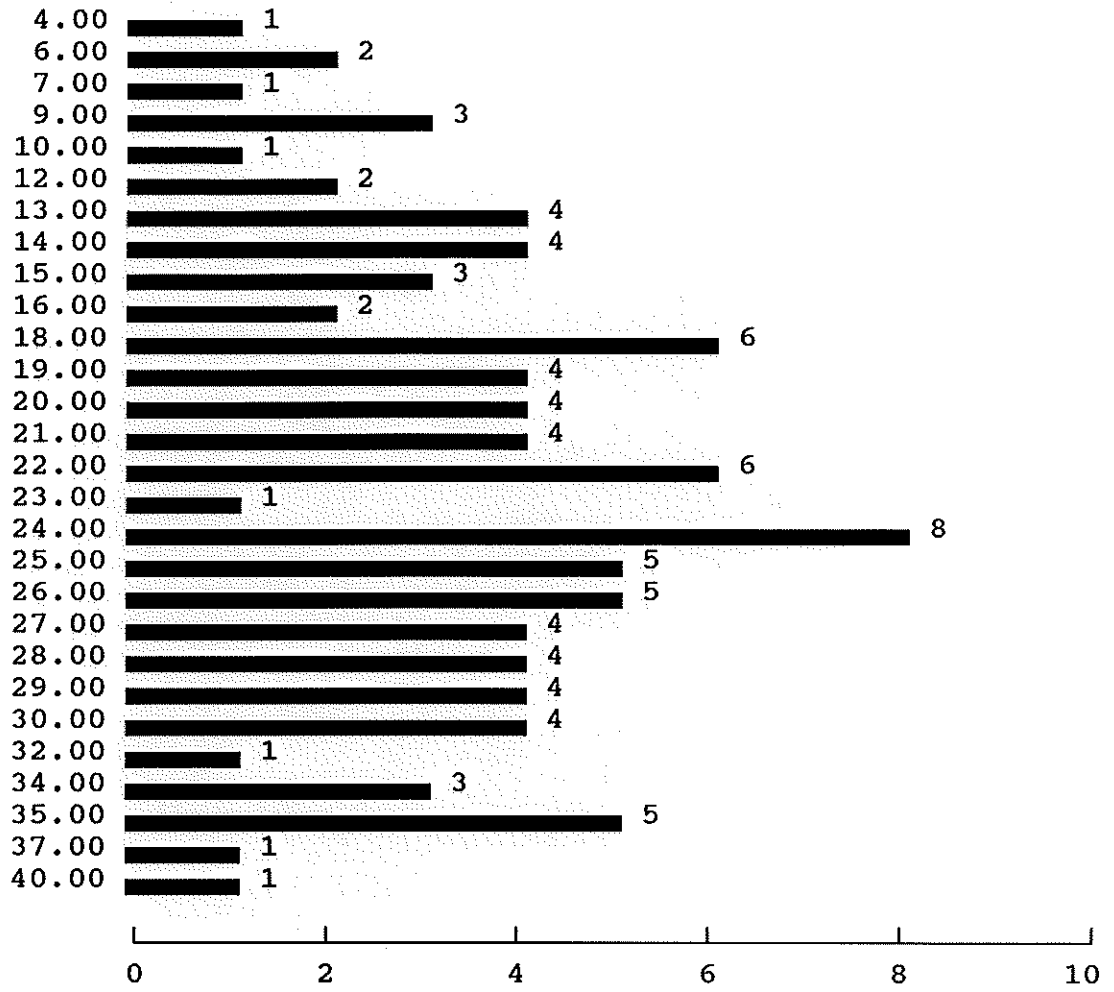


Valid cases 86 Missing cases 7

TOTATT

Value Label	Value	Frequency	Percent	Valid Percent	Cum Percent
	4.00	1	1.1	1.1	1.1
	6.00	2	2.2	2.2	3.2
	7.00	1	1.1	1.1	4.3
	9.00	3	3.2	3.2	7.5
	10.00	1	1.1	1.1	8.6
	12.00	2	2.2	2.2	10.8
	13.00	4	4.3	4.3	15.1
	14.00	4	4.3	4.3	19.4
	15.00	3	3.2	3.2	22.6
	16.00	2	2.2	2.2	24.7
	18.00	6	6.5	6.5	31.2
	19.00	4	4.3	4.3	35.5
	20.00	4	4.3	4.3	39.8
	21.00	4	4.3	4.3	44.1
	22.00	6	6.5	6.5	50.5
	23.00	1	1.1	1.1	51.6
	24.00	8	8.6	8.6	60.2
	25.00	5	5.4	5.4	65.6
	26.00	5	5.4	5.4	71.0
	27.00	4	4.3	4.3	75.3
	28.00	4	4.3	4.3	79.6
	29.00	4	4.3	4.3	83.9
	30.00	4	4.3	4.3	88.2
	32.00	1	1.1	1.1	89.2
	34.00	3	3.2	3.2	92.5
	35.00	5	5.4	5.4	97.8
	37.00	1	1.1	1.1	98.9
	40.00	1	1.1	1.1	100.0
		-----	-----	-----	
	Total	93	100.0	100.0	

TOTATT



Valid cases

93

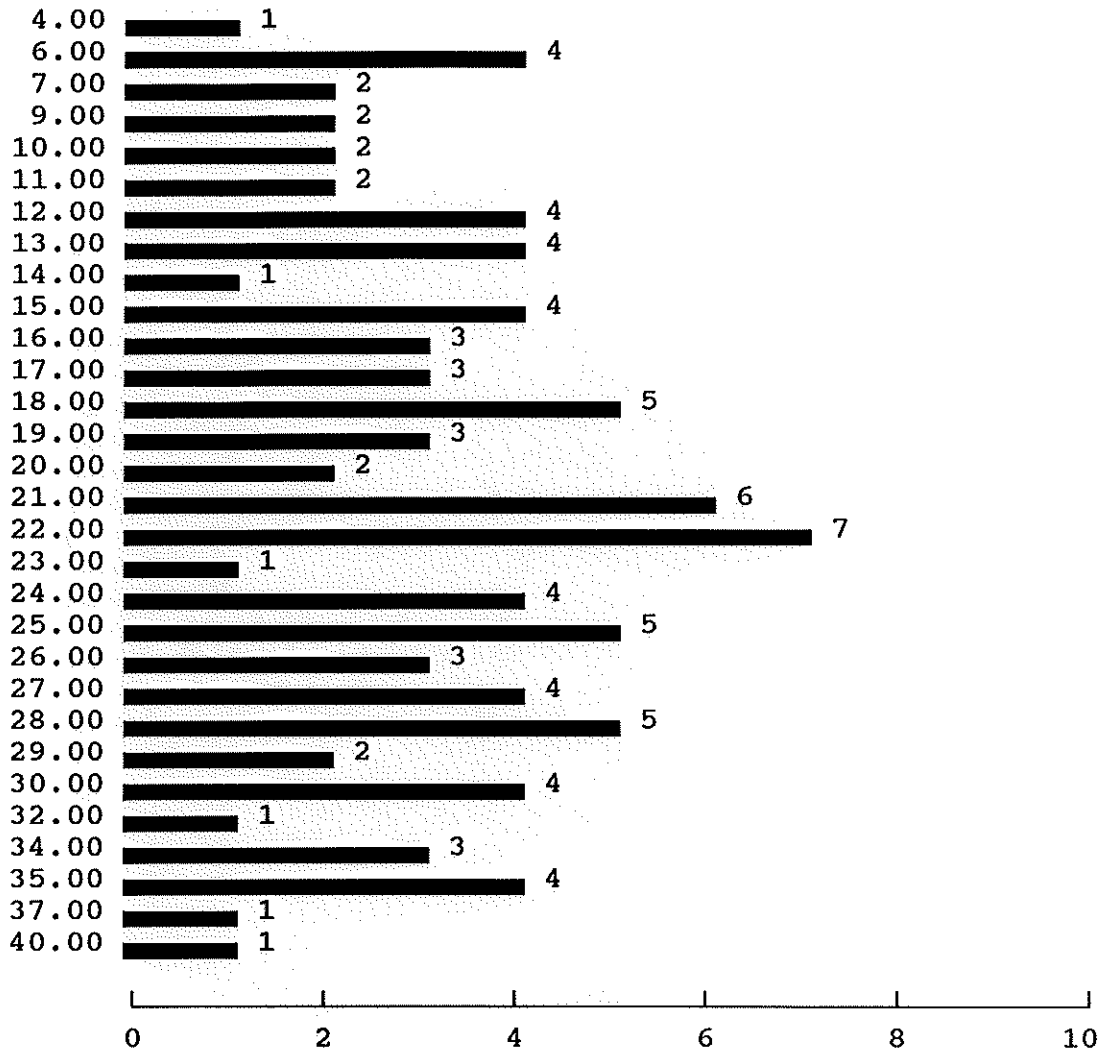
Missing cases

0

TOTCOMP

Value Label	Value	Frequency	Percent	Valid Percent	Cum Percent
	4.00	1	1.1	1.1	1.1
	6.00	4	4.3	4.3	5.4
	7.00	2	2.2	2.2	7.5
	9.00	2	2.2	2.2	9.7
	10.00	2	2.2	2.2	11.8
	11.00	2	2.2	2.2	14.0
	12.00	4	4.3	4.3	18.3
	13.00	4	4.3	4.3	22.6
	14.00	1	1.1	1.1	23.7
	15.00	4	4.3	4.3	28.0
	16.00	3	3.2	3.2	31.2
	17.00	3	3.2	3.2	34.4
	18.00	5	5.4	5.4	39.8
	19.00	3	3.2	3.2	43.0
	20.00	2	2.2	2.2	45.2
	21.00	6	6.5	6.5	51.6
	22.00	7	7.5	7.5	59.1
	23.00	1	1.1	1.1	60.2
	24.00	4	4.3	4.3	64.5
	25.00	5	5.4	5.4	69.9
	26.00	3	3.2	3.2	73.1
	27.00	4	4.3	4.3	77.4
	28.00	5	5.4	5.4	82.8
	29.00	2	2.2	2.2	84.9
	30.00	4	4.3	4.3	89.2
	32.00	1	1.1	1.1	90.3
	34.00	3	3.2	3.2	93.5
	35.00	4	4.3	4.3	97.8
	37.00	1	1.1	1.1	98.9
	40.00	1	1.1	1.1	100.0
		-----	-----	-----	
	Total	93	100.0	100.0	

TOTCOMP



Valid cases

93

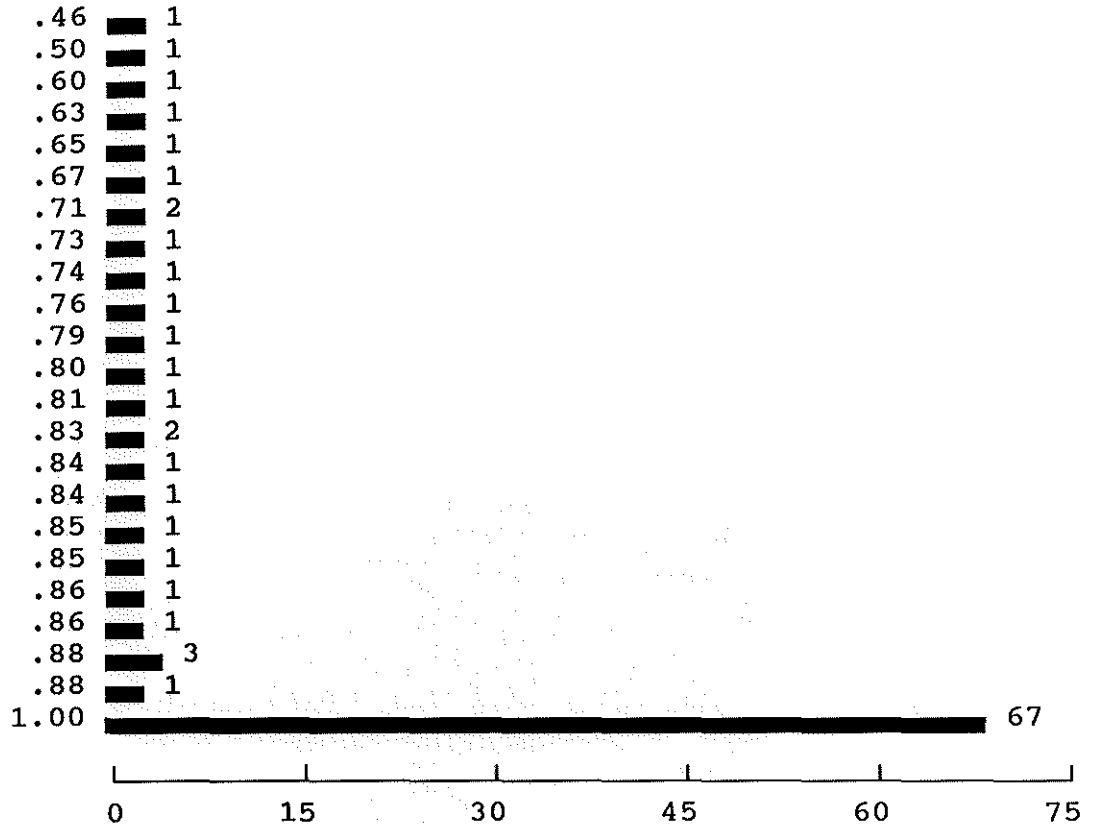
Missing cases

0

RATIO

Value Label	Value	Frequency	Percent	Valid Percent	Cum Percent
	.46	1	1.1	1.1	1.1
	.50	1	1.1	1.1	2.2
	.60	1	1.1	1.1	3.2
	.63	1	1.1	1.1	4.3
	.65	1	1.1	1.1	5.4
	.67	1	1.1	1.1	6.5
	.71	2	2.2	2.2	8.6
	.73	1	1.1	1.1	9.7
	.74	1	1.1	1.1	10.8
	.76	1	1.1	1.1	11.8
	.79	1	1.1	1.1	12.9
	.80	1	1.1	1.1	14.0
	.81	1	1.1	1.1	15.1
	.83	2	2.2	2.2	17.2
	.84	1	1.1	1.1	18.3
	.84	1	1.1	1.1	19.4
	.85	1	1.1	1.1	20.4
	.85	1	1.1	1.1	21.5
	.86	1	1.1	1.1	22.6
	.86	1	1.1	1.1	23.7
	.88	3	3.2	3.2	26.9
	.88	1	1.1	1.1	28.0
	1.00	67	72.0	72.0	100.0
		-----	-----	-----	
	Total	93	100.0	100.0	

RATIO



Valid cases

93

Missing cases

0

This procedure was completed at 14:39:58

CORRELATIONS VARIABLES=AWARD CUMGPA RATIO TOTATT TOTCOMP/OPTIONS=2 5.

Correlations:	AWARD	CUMGPA	RATIO	TOTATT	TOTCOMP
AWARD	1.0000 (0) P= .	-.0802 (93) P= .445	-.0314 (93) P= .765	-.2027 (93) P= .051	-.1937 (93) P= .063
CUMGPA	-.0802 (93) P= .445	1.0000 (0) P= .	.5674 (93) P= .000	.2248 (93) P= .030	.3784 (93) P= .000
RATIO	-.0314 (93) P= .765	.5674 (93) P= .000	1.0000 (0) P= .	.1849 (93) P= .076	.4331 (93) P= .000
TOTATT	-.2027 (93) P= .051	.2248 (93) P= .030	.1849 (93) P= .076	1.0000 (0) P= .	.9618 (93) P= .000
TOTCOMP	-.1937 (93) P= .063	.3784 (93) P= .000	.4331 (93) P= .000	.9618 (93) P= .000	1.0000 (0) P= .

(Coefficient / (Cases) / 2-tailed Significance)

" . " is printed if a coefficient cannot be computed

This procedure was completed at 14:40:00
MEANS VARIABLES=CUMGPA BY AWARD BY SPORT1.

***** Given WORKSPACE allows for 8936 Cells with 2 Dimensions for MEANS.

Summaries of CUMGPA CUMULATIVE G.P.A.
 By levels of AWARD Scholarship received
 SPORT1 Sport: active in #1

Variable	Value	Label	Mean	Std Dev	Cases
For Entire Population			2.77674	.64487	93
AWARD	0	NO	2.85715 ✓	.71104	27
SPORT1	MB	MENS-BASKETBALL	✓2.46350 ✓	.81390	4
SPORT1	MC	MENS-CROSS COUNTRY	2.33050 ✓	.55367	4
SPORT1	MG	MENS-GOLF	3.12180 ✓	.72485	5
SPORT1	WB	WOMENS-BASKETBALL	2.90475 ✓	.94267	4
SPORT1	WC	WOMENS-CROSS COUNTRY	1.97800 ✓	.00000	1
SPORT1	WS	WOMENS-SOFTBALL	3.26075 ✓	.31965	4
SPORT1	WT	WOMENS-TENNIS	3.53133 ✓	.23774	3
SPORT1	WV	WOMENS-VOLLEYBALL	2.56200 ✓	.01273	2
AWARD	1	YES	2.74385 ✓	.61854	66
SPORT1	MB	MENS-BASKETBALL	2.70500 ✓	.43937	9
SPORT1	MC	MENS-CROSS COUNTRY	2.59980 ✓	.82171	5
SPORT1	MG	MENS-GOLF	2.31600 ✓	.75775	5
SPORT1	MT	MENS-TENNIS	2.82786 ✓	.48125	7
SPORT1	WB	WOMENS-BASKETBALL	2.95550 ✓	.41166	8
SPORT1	WC	WOMENS-CROSS COUNTRY	3.06043 ✓	.64568	7
SPORT1	WS	WOMENS-SOFTBALL	2.41721 ✓	.68950	14
SPORT1	WT	WOMENS-TENNIS	2.92475 ✓	.61215	4
SPORT1	WV	WOMENS-VOLLEYBALL	3.10971 ✓	.45479	7
Total Cases =		93			

This procedure was completed at 14:40:03
MEANS VARIABLES=TOTATT BY AWARD BY SPORT1.

***** Given WORKSPACE allows for 8936 Cells with 2 Dimensions for MEANS.

Summaries of TOTATT
 By levels of AWARD Scholarship received
 SPORT1 Sport: active in #1

Variable	Value	Label	Mean	Std Dev	Cases
For Entire Population			22.1613	7.8301	93
AWARD	0	NO	24.6296 ✓	5.7389	27
SPORT1	MB	MENS-BASKETBALL	23.2500 ✓	5.1235	4
SPORT1	MC	MENS-CROSS COUNTRY	21.7500 ✓	3.0957	4
SPORT1	MG	MENS-GOLF	28.0000 ✓	8.1240	5
SPORT1	WB	WOMENS-BASKETBALL	22.0000 ✓	4.5461	4
SPORT1	WC	WOMENS-CROSS COUNTRY	26.0000 ✓	.0000	1
SPORT1	WS	WOMENS-SOFTBALL	24.2500 ✓	5.6789	4
SPORT1	WT	WOMENS-TENNIS	28.6667 ✓	7.6376	3
SPORT1	WV	WOMENS-VOLLEYBALL	24.0000 ✓	5.6569	2
AWARD	1	YES	21.1515 ✓	8.3689	66
SPORT1	MB	MENS-BASKETBALL	23.5556 ✓	9.4751	9
SPORT1	MC	MENS-CROSS COUNTRY	18.0000 ✓	8.2158	5
SPORT1	MG	MENS-GOLF	18.4000 ✓	7.8294	5
SPORT1	MT	MENS-TENNIS	23.4286 ✓	9.3783	7
SPORT1	WB	WOMENS-BASKETBALL	23.0000 ✓	9.1652	8
SPORT1	WC	WOMENS-CROSS COUNTRY	13.8571 ✓	8.1533	7
SPORT1	WS	WOMENS-SOFTBALL	22.5000 ✓	7.1549	14
SPORT1	WT	WOMENS-TENNIS	17.2500 ✓	8.6168	4
SPORT1	WV	WOMENS-VOLLEYBALL	24.7143	5.2509	7
Total Cases =					93

This procedure was completed at 14:40:06
MEANS VARIABLES=TOTCOMP BY AWARD BY SPORT1.

***** Given WORKSPACE allows for 8936 Cells with 2 Dimensions for MEANS.

Summaries of TOTCOMP
 By levels of AWARD Scholarship received
 SPORT1 Sport: active in #1

Variable	Value	Label	Mean	Std Dev	Cases
For Entire Population			20.8710	8.2991	93
AWARD	0	NO	23.3704	6.9235	27
SPORT1	MB	MENS-BASKETBALL	21.2500✓	7.7190	4
SPORT1	MC	MENS-CROSS COUNTRY	20.2500✓	4.6458	4
SPORT1	MG	MENS-GOLF	28.0000✓	8.1240	5
SPORT1	WB	WOMENS-BASKETBALL	20.5000✓	5.0662	4
SPORT1	WC	WOMENS-CROSS COUNTRY	23.0000✓	.0000	1
SPORT1	WS	WOMENS-SOFTBALL	23.2500✓	6.7020	4
SPORT1	WT	WOMENS-TENNIS	28.6667✓	7.6376	3
SPORT1	WV	WOMENS-VOLLEYBALL	20.5000✓	10.6066	2
AWARD	1	YES	19.8485✓	8.6402	66
SPORT1	MB	MENS-BASKETBALL	22.7778✓	8.6715	9
SPORT1	MC	MENS-CROSS COUNTRY	16.0000✓	9.8489	5
SPORT1	MG	MENS-GOLF	16.8000✓	7.3280	5
SPORT1	MT	MENS-TENNIS	22.1429✓	9.8392	7
SPORT1	WB	WOMENS-BASKETBALL	22.6250✓	9.1798	8
SPORT1	WC	WOMENS-CROSS COUNTRY	12.0000✓	8.3865	7
SPORT1	WS	WOMENS-SOFTBALL	19.9286✓	7.5800	14
SPORT1	WT	WOMENS-TENNIS	17.2500✓	8.6168	4
SPORT1	WV	WOMENS-VOLLEYBALL	24.7143✓	5.2509	7
Total Cases =			93		

This procedure was completed at 14:40:08
MEANS VARIABLES=RATIO BY AWARD BY SPORT1.

***** Given WORKSPACE allows for 8936 Cells with 2 Dimensions for MEANS.

Summaries of RATIO
By levels of AWARD Scholarship received
SPORT1 Sport: active in #1

Variable	Value	Label	Mean	Std Dev	Cases
For Entire Population			.9338	.1231	93
AWARD	0	NO	.9398 ✓	.1160	27
SPORT1	MB	MENS-BASKETBALL	.9000 ✓	.2000	4
SPORT1	MC	MENS-CROSS COUNTRY	.9230 ✓	.0889	4
SPORT1	MG	MENS-GOLF	1.0000 ✓	.0000	5
SPORT1	WB	WOMENS-BASKETBALL	.9348 ✓	.1304	4
SPORT1	WC	WOMENS-CROSS COUNTRY	.8846 ✓	.0000	1
SPORT1	WS	WOMENS-SOFTBALL	.9524 ✓	.0952	4
SPORT1	WT	WOMENS-TENNIS	1.0000 ✓	.0000	3
SPORT1	WV	WOMENS-VOLLEYBALL	.8250 ✓	.2475	2
AWARD	1	YES	.9314 ✓	.1267	66
SPORT1	MB	MENS-BASKETBALL	.9778 ✓	.0667	9
SPORT1	MC	MENS-CROSS COUNTRY	.8571 ✓	.2202	5
SPORT1	MG	MENS-GOLF	.9153 ✓	.1272	5
SPORT1	MT	MENS-TENNIS	.9389 ✓	.0773	7
SPORT1	WB	WOMENS-BASKETBALL	.9844 ✓	.0442	8
SPORT1	WC	WOMENS-CROSS COUNTRY	.8576 ✓	.2140	7
SPORT1	WS	WOMENS-SOFTBALL	.8827 ✓	.1333	14
SPORT1	WT	WOMENS-TENNIS	1.0000 ✓	.0000	4
SPORT1	WV	WOMENS-VOLLEYBALL	1.0000 ✓	.0000	7
Total Cases =		93			

This procedure was completed at 14:40:11

FINISH

[Faint, illegible text or markings in the center of the page]