

Oakland Community College  
 5-Year Population Estimates for Cities Surrounding Highland Lakes Campus  
 April 2007

## Population Growth Estimates for Cities Surrounding the Highland Lakes Campus

City, Village or Township	2006 Estimated Population	2011 Projected Population	2006-2011 Projected Growth (%)
Clarkston	929	934	0.5%
Commerce Township	33,657	35,181	4.5%
Keego Harbor	2,776	2,809	1.2%
Lake Angelus	422	470	11.4%
Lake Orion	2,823	2,876	1.9%
Orchard Lake Village	2,277	2,312	1.5%
Pontiac	67,893	68,866	1.4%
Springfield	14,240	14,665	3.0%
Sylvan Lake	1,688	1,697	0.5%
Walled Lake	7,585	7,979	5.2%
Waterford	73,931	75,261	1.8%
West Bloomfield	66,920	68,241	2.0%
White Lake	30,342	31,356	3.3%
Wixom	13,929	14,292	2.6%
Wolverine Lake	4,339	4,358	0.4%
<b>Total</b>	<b>323,751</b>	<b>331,297</b>	<b>2.3%</b>

Source: ESRI Business Information Solutions  
 Compiled by: Oakland County Planning and Economic Development Services

In 2006, Oakland County had an estimated population of 1,236,621 with a projected population of 1,269,111 for 2011 estimating a growth of 2.6%. Of 15 selected cities surrounding the Highland Lakes Campus, the total 2006 estimated population is 323,751 with 331,297 as the projected population for 2011 estimating a 2.3% growth.

Note: Estimated 2006 and projected 2011 Oakland County population totals cannot be found in the table above.

Office of Institutional Research  
Project Summary:

**Population estimates cities near HL**

<b>ID:</b>	2732	<b>IR Category:</b>	Environmental Scanni
<b>Requester</b>	Randolph, Deb	<b>Project Type:</b>	Ad Hoc
<b>Date Requested</b>	14-Mar-07	<b>Status:</b>	Active
<b>Expected Completion</b>	30-Apr-07	<b>Assigned To:</b>	Shirey, E.
<b>Actual Completion:</b>			

**I Drive Location:** I:\Ad Hoc Studies\Ad Hoc Active & Pending\Population Growth near HL

**Description:** Can I get some data as to how fast the northern side of Oakland county is growing, especially the area around the Highland Lakes Campus. Thanks

**Methodology:**

**Major Findings:**

## Shirey, Erin

---

**From:** Showers, Nancy C  
**Sent:** Friday, March 23, 2007 1:52 PM  
**To:** Randolph, Debra A  
**Cc:** Orłowski, Martin A; Shirey, Erin  
**Subject:** FW: ?

Hi, Deb. Sorry for the delay in responding. Our office doesn't have anything readily available regarding this information, but we can do a little digging if you would like. It would be helpful for you to provide a few names of cities around HL for which you are interested in retrieving data. I'll follow-up with what we find.

Thank you,

Nancy, ext. 2141

-----Original Message-----

**From:** Orłowski, Martin A  
**Sent:** Wednesday, March 14, 2007 1:37 PM  
**To:** Randolph, Debra A  
**Cc:** Showers, Nancy C  
**Subject:** RE: ?

Deb,

I don't have anything on this right at hand. SEMCOG might have such data as well as the Oakland County Economic Development Office. I'm also forwarding your e-mail to Nancy Showers, since IR might have such data in their records (don't know).

Martin Orłowski, Director  
Assessment & Effectiveness  
Oakland Community College  
(248) 522-3882

-----Original Message-----

**From:** Randolph, Debra A  
**Sent:** Wednesday, March 14, 2007 9:17 AM  
**To:** Orłowski, Martin A  
**Subject:** ?

Hi, this is Deb Randolph and I have a question. Can I get some data as to how fast the northern side of Oakland county is growing, especially the area around the Highland Lakes Campus. thanks

## Shirey, Erin

---

**From:** Randolph, Debra A  
**Sent:** Wednesday, April 04, 2007 11:06 AM  
**To:** Shirey, Erin  
**Subject:** RE: Population growth around Highland Lakes

Thank you very much

-----Original Message-----

**From:** Shirey, Erin  
**Sent:** Wednesday, April 04, 2007 10:42 AM  
**To:** Randolph, Debra A  
**Subject:** RE: Population growth around Highland Lakes

Great, I will go ahead and put something together for you.

Erin Shirey

-----Original Message-----

**From:** Randolph, Debra A  
**Sent:** Wednesday, April 04, 2007 10:41 AM  
**To:** Shirey, Erin  
**Subject:** RE: Population growth around Highland Lakes

I just wanted a few figures as to how fast Oakland County was growing especially around the Highland Lakes Campus to put in a request for a new faculty member. thanks

-----Original Message-----

**From:** Shirey, Erin  
**Sent:** Wednesday, April 04, 2007 10:11 AM  
**To:** Randolph, Debra A  
**Subject:** Population growth around Highland Lakes

Deb,

I just wanted to touch base with you in reference to your request for population growth around the Highland Lakes campus. Did you have any particular cities in mind. I just wanted to make sure that you receive what you need.

Thanks,

Erin L. Shirey  
Research Assistant  
Oakland Community College  
Institutional Research Department  
elshirey@oaklandcc.edu  
(218) 232-4519

*Institutional Research: Progress Through Knowledge*

## Population Growth Estimates for Cities Surrounding the Highland Lakes Campus

City, Village or Township	2006 Estimated Population	2011 Projected Population	2006-2011 Projected Growth (%)
Clarkston	929	934	0.5%
Commerce Township	33,657	35,181	4.5%
Keego Harbor	2,776	2,809	1.2%
Lake Angelus	422	470	11.4%
Lake Orion	2,823	2,876	1.9%
Orchard Lake Village	2,277	2,312	1.5%
Pontiac	67,893	68,866	1.4%
Springfield	14,240	14,665	3.0%
Sylvan Lake	1,688	1,697	0.5%
Walled Lake	7,585	7,979	5.2%
Waterford	73,931	75,261	1.8%
West Bloomfield	66,920	68,241	2.0%
White Lake	30,342	31,356	3.3%
Wixom	13,929	14,292	2.6%
Wolverine Lake	4,339	4,358	0.4%
<b>Total</b>	<b>323,751</b>	<b>331,297</b>	<b>2.3%</b>

Source: ESRI Business Information Solutions  
 Compiled by: Oakland County Planning and Economic Development Services

In 2006, Oakland County had an estimated population of 1,236,621 with a projected population of 1,269,111 for 2011 estimating a growth of 2.6%. Of 15 selected cities surrounding the Highland Lakes Campus, the total 2006 estimated population is 323,751 with 331,297 as the projected population for 2011 estimating a 2.3% growth.

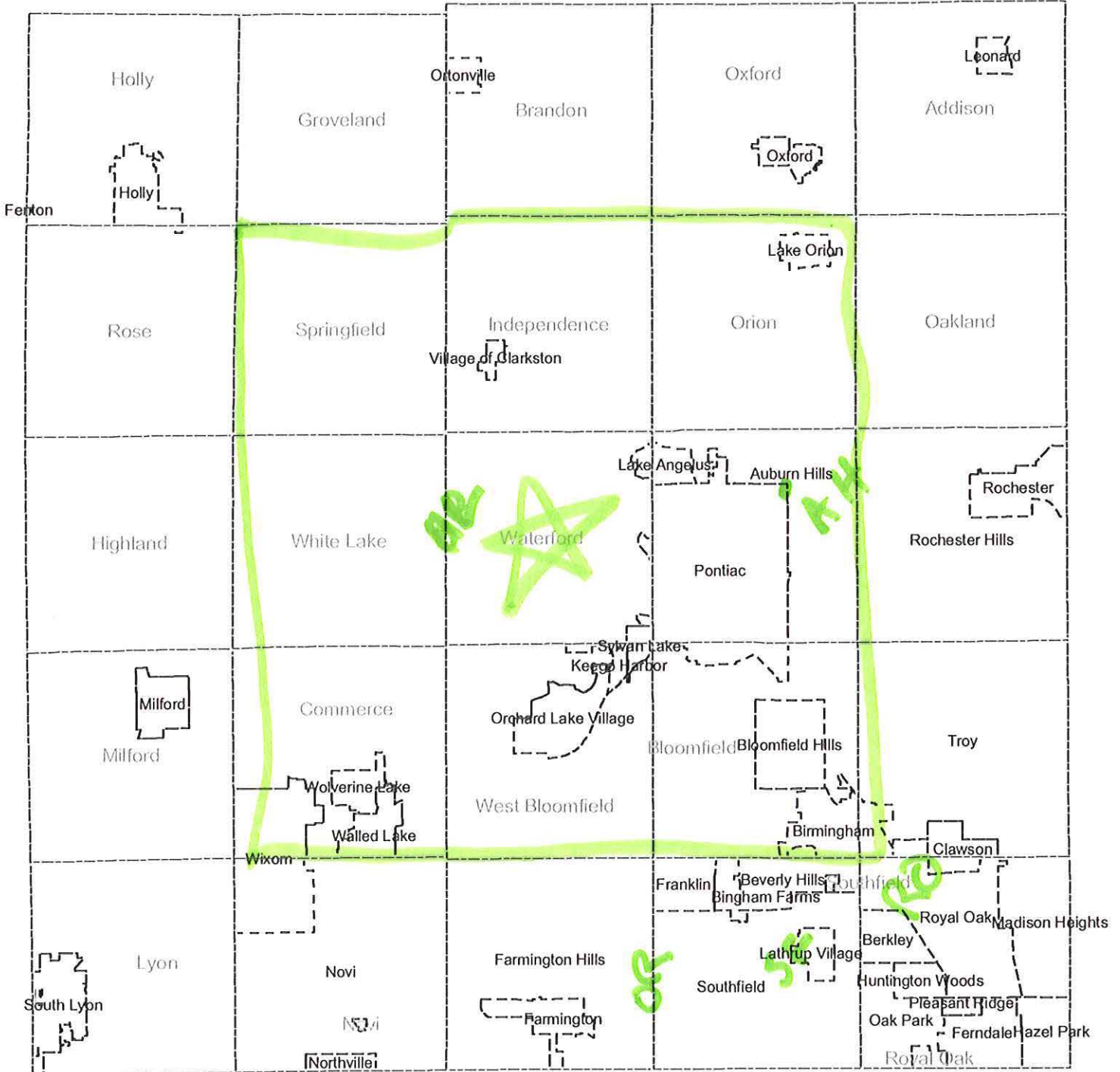
Note: Estimated 2006 and projected 2011 Oakland County population totals cannot be found in the table above.





# Oakland County Municipal Boundaries

February, 2005



## Planning & Economic Development Services

Executive Office Building  
 1200 N. Telegraph Road, Dept. 412  
 Pontiac, MI 48341-0412  
 TEL 248.858.0720



L. Brooks Patterson, County Executive





Address **Waterford, MI**

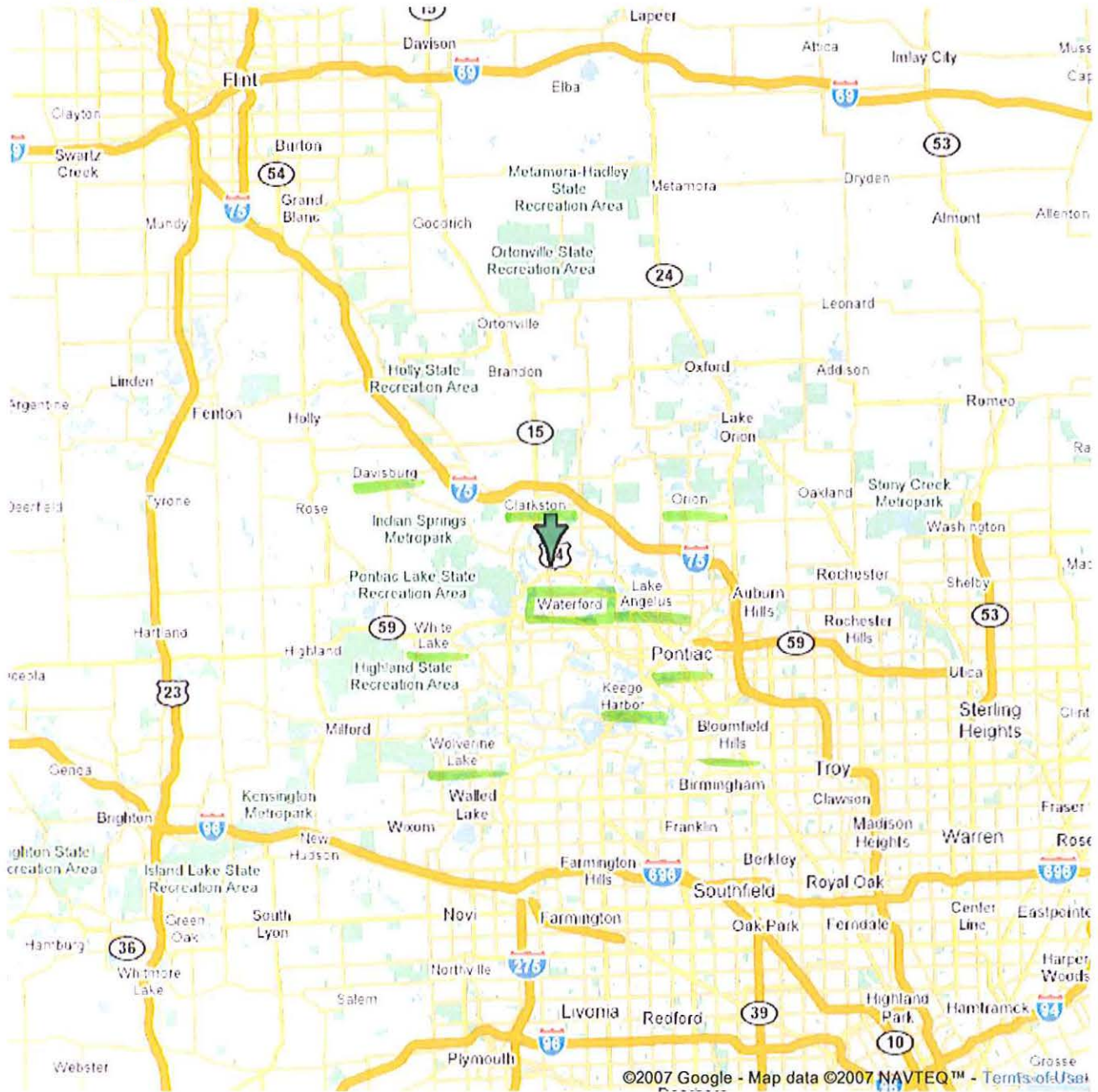


Table 3

**Population Change by Community, Southeast Michigan, 2000-2007 (Cont'd)**

Community	Total Population				Household Population				Group Quarters Population			
	Census April 1, 2000	Estimate Mar. 1, 2007	Change 2000-2007		Census April 1, 2000	Estimate Mar. 1, 2007	Change 2000-2007		Census April 1, 2000	Estimate Mar. 1, 2007	Change 2000-2007	
			Number	Percent			Number	Percent			Number	Percent
<b>Oakland County</b>	<b>1,194,156</b>	<b>1,220,256</b>	<b>26,100</b>	<b>2.2</b>	<b>1,180,408</b>	<b>1,206,425</b>	<b>26,017</b>	<b>2.2</b>	<b>13,748</b>	<b>13,831</b>	<b>83</b>	<b>0.6</b>
Addison Twp	6,107	6,489	382	6.3	5,958	6,340	382	6.4	149	149	0	0.0
Auburn Hills	19,837	20,963	1,126	5.7	18,170	19,062	892	4.9	1,667	1,901	234	14.0
Berkley	15,531	14,505	-1,026	-6.6	15,506	14,480	-1,026	-6.6	25	25	0	0.0
Beverly Hills	10,437	10,190	-247	-2.4	10,304	10,057	-247	-2.4	133	133	0	0.0
Bingham Farms	1,030	1,009	-21	-2.0	1,030	1,009	-21	-2.0	0	0	0	0.0
Birmingham	19,291	19,581	290	1.5	19,287	19,577	290	1.5	4	4	0	0.0
Bloomfield Hills	3,940	3,744	-196	-5.0	3,729	3,533	-196	-5.3	211	211	0	0.0
Bloomfield Twp	43,023	41,720	-1,303	-3.0	42,585	41,282	-1,303	-3.1	438	438	0	0.0
Brandon Twp	13,230	14,067	837	6.3	13,141	13,978	837	6.4	89	89	0	0.0
Clarkston, Village of	962	982	20	2.1	962	982	20	2.1	0	0	0	0.0
Clawson	12,732	11,869	-863	-6.8	12,582	11,719	-863	-6.9	150	150	0	0.0
Commerce Twp	30,349	36,195	5,846	19.3	30,326	36,172	5,846	19.3	23	23	0	0.0
Farmington	10,423	10,339	-84	-0.8	10,287	10,203	-84	-0.8	136	136	0	0.0
Farmington Hills	82,111	80,457	-1,654	-2.0	80,798	79,144	-1,654	-2.0	1,313	1,313	0	0.0
Ferndale	22,105	20,246	-1,859	-8.4	22,003	20,144	-1,859	-8.4	102	102	0	0.0
Franklin	2,937	3,044	107	3.6	2,927	3,034	107	3.7	10	10	0	0.0
Groveland Twp	6,150	6,409	259	4.2	6,118	6,377	259	4.2	32	32	0	0.0
Hazel Park	18,963	18,395	-568	-3.0	18,956	18,388	-568	-3.0	7	7	0	0.0
Highland Twp	19,169	20,010	841	4.4	19,152	19,993	841	4.4	17	17	0	0.0
Holly	6,135	6,206	71	1.2	6,004	6,075	71	1.2	131	131	0	0.0
Holly Twp	3,902	5,576	1,674	42.9	3,801	5,475	1,674	44.0	101	101	0	0.0
Huntington Woods	6,151	5,905	-246	-4.0	6,145	5,899	-246	-4.0	6	6	0	0.0
Independence Twp	32,581	34,829	2,248	6.9	32,300	34,548	2,248	7.0	281	281	0	0.0
Keego Harbor	2,769	2,913	144	5.2	2,769	2,913	144	5.2	0	0	0	0.0
Lake Angelus	326	308	-18	-5.5	326	308	-18	-5.5	0	0	0	0.0
Lake Orion	2,715	2,661	-54	-2.0	2,602	2,548	-54	-2.1	113	113	0	0.0
Lathrup Village	4,236	4,092	-144	-3.4	4,213	4,069	-144	-3.4	23	23	0	0.0
Leonard	332	327	-5	-1.5	332	327	-5	-1.5	0	0	0	0.0
Lyon Twp	11,041	13,527	2,486	22.5	11,018	13,504	2,486	22.6	23	23	0	0.0
Madison Heights	31,101	29,817	-1,284	-4.1	30,941	29,657	-1,284	-4.1	160	160	0	0.0
Milford	6,272	6,336	64	1.0	6,186	6,250	64	1.0	86	86	0	0.0
Milford Twp	8,999	10,163	1,164	12.9	8,895	10,059	1,164	13.1	104	104	0	0.0
Northville (Part)	3,352	3,209	-143	-4.3	3,352	3,209	-143	-4.3	0	0	0	0.0
Novi	47,579	54,420	6,841	14.4	47,312	54,153	6,841	14.5	267	267	0	0.0
Oakland Twp	13,071	16,300	3,229	24.7	13,051	16,280	3,229	24.7	20	20	0	0.0
Oak Park	29,793	31,344	1,551	5.2	29,770	31,321	1,551	5.2	23	23	0	0.0
Orchard Lake Village	2,215	2,304	89	4.0	2,209	2,298	89	4.0	6	6	0	0.0
Orion Twp	30,748	32,279	1,531	5.0	30,579	32,110	1,531	5.0	169	169	0	0.0
Ortonville	1,535	1,574	39	2.5	1,507	1,546	39	2.6	28	28	0	0.0

(Cont'd)

Table 3

**Population Change by Community, Southeast Michigan, 2000-2007 (Cont'd)**

Community	Total Population				Household Population				Group Quarters Population			
	Census April 1, 2000	Estimate Mar. 1, 2007	Change 2000-2007 Number    Percent		Census April 1, 2000	Estimate Mar. 1, 2007	Change 2000-2007 Number    Percent		Census April 1, 2000	Estimate Mar. 1, 2007	Change 2000-2007 Number    Percent	
<b>Oakland County (Cont'd)</b>												
Oxford	3,540	3,695	155	4.4	3,514	3,669	155	4.4	26	26	0	0.0
Oxford Twp	12,485	15,867	3,382	27.1	12,402	15,784	3,382	27.3	83	83	0	0.0
Pleasant Ridge	2,594	2,349	-245	-9.4	2,589	2,344	-245	-9.5	5	5	0	0.0
Pontiac	67,506	68,191	685	1.0	64,896	65,581	685	1.1	2,610	2,610	0	0.0
Rochester	10,467	12,061	1,594	15.2	10,371	11,965	1,594	15.4	96	96	0	0.0
Rochester Hills	68,825	69,377	552	0.8	68,042	68,594	552	0.8	783	783	0	0.0
Rose Twp	6,210	6,207	-3	0.0	6,171	6,168	-3	0.0	39	39	0	0.0
Royal Oak	60,062	55,899	-4,163	-6.9	59,556	55,393	-4,163	-7.0	506	506	0	0.0
Royal Oak Twp	5,446	2,669	-2,777	-51.0	5,394	2,617	-2,777	-51.5	52	52	0	0.0
South Lyon	10,036	11,196	1,160	11.6	9,962	11,122	1,160	11.6	74	74	0	0.0
Southfield	78,322	78,130	-192	-0.2	77,099	76,907	-192	-0.2	1,223	1,223	0	0.0
Springfield Twp	13,338	14,403	1,065	8.0	13,247	14,312	1,065	8.0	91	91	0	0.0
Sylvan Lake	1,735	1,648	-87	-5.0	1,730	1,643	-87	-5.0	5	5	0	0.0
Troy	80,959	81,413	454	0.6	80,724	81,178	454	0.6	235	235	0	0.0
Walled Lake	6,713	6,953	240	3.6	6,708	6,948	240	3.6	5	5	0	0.0
Waterford Twp	71,981	70,828	-1,153	-1.6	71,231	70,078	-1,153	-1.6	750	750	0	0.0
West Bloomfield Twp	64,860	65,873	1,013	1.6	64,081	65,094	1,013	1.6	779	779	0	0.0
White Lake Twp	28,219	30,600	2,381	8.4	27,936	30,468	2,532	9.1	283	132	-151	-53.4
Wixom	13,263	14,380	1,117	8.4	13,207	14,324	1,117	8.5	56	56	0	0.0
Wolverine Lake	4,415	4,213	-202	-4.6	4,415	4,213	-202	-4.6	0	0	0	0.0
<b>St. Clair County</b>	<b>164,235</b>	<b>174,080</b>	<b>9,845</b>	<b>6.0</b>	<b>162,558</b>	<b>172,198</b>	<b>9,640</b>	<b>5.9</b>	<b>1,677</b>	<b>1,882</b>	<b>205</b>	<b>12.2</b>
Algonac	4,613	4,477	-136	-2.9	4,606	4,470	-136	-3.0	7	7	0	0.0
Berlin Twp	3,162	3,381	219	6.9	3,162	3,381	219	6.9	0	0	0	0.0
Brockway Twp	1,900	2,102	202	10.6	1,890	2,092	202	10.7	10	10	0	0.0
Burtchville Twp	3,956	4,045	89	2.2	3,950	4,039	89	2.3	6	6	0	0.0
Capac	1,775	2,260	485	27.3	1,775	2,260	485	27.3	0	0	0	0.0
Casco Twp	4,748	4,779	31	0.7	4,748	4,779	31	0.7	0	0	0	0.0
China Twp	3,340	3,635	345	10.3	3,328	3,673	345	10.4	12	12	0	0.0
Clay Twp	9,822	9,866	44	0.4	9,822	9,866	44	0.4	0	0	0	0.0
Clyde Twp	5,523	5,600	77	1.4	5,497	5,574	77	1.4	26	26	0	0.0
Columbus Twp	4,615	4,911	296	6.4	4,604	4,900	296	6.4	11	11	0	0.0
Cottleville Twp	3,814	3,997	183	4.8	3,808	3,991	183	4.8	6	6	0	0.0
East China Twp	3,630	4,075	445	12.3	3,485	3,930	445	12.8	145	145	0	0.0
Emmett	251	248	-3	-1.2	251	248	-3	-1.2	0	0	0	0.0
Emmett Twp	2,255	2,566	311	13.8	2,255	2,566	311	13.8	0	0	0	0.0
Fort Gratiot Twp	10,691	11,414	723	6.8	10,438	11,161	723	6.9	253	253	0	0.0
(Cont'd)												

## Oakland County Municipality Population Trends

City, Village or Township	2006 Estimated Population	2011 Projected Population	2009-2011 Projected Growth (%)
Addison Township	6,438	6,586	0.45%
Auburn Hills	21,511	22,273	0.70%
Berkley	15,206	15,293	0.11%
Beverly Hills	10,369	10,480	0.21%
Bingham Farms	1,014	1,023	0.18%
Birmingham	19,068	19,198	0.14%
Bloomfield Hills	4,036	4,121	0.42%
Bloomfield Township	41,797	42,080	0.14%
Brandon Township	14,133	14,542	0.57%
Clarkston	929	934	0.10%
Clawson	12,444	12,524	0.13%
Commerce Township	33,657	35,181	0.89%
Farmington	9,917	10,006	0.18%
Farmington Hills	82,227	83,112	0.21%
Ferndale	21,645	21,768	0.11%
Franklin	2,965	2,999	0.23%
Groveland Township	5,963	6,000	0.12%
Hazel Park	18,589	18,694	0.11%
Highland Township	19,504	19,826	0.33%
Holly Township	5,793	6,748	3.10%
Holly Village	6,578	6,780	0.61%
Huntington Woods	5,991	6,027	0.12%
Independence Township	34,668	35,712	0.59%
Keego Harbor	2,776	2,809	0.24%
Lake Angelus	422	470	2.18%
Lake Orion	2,823	2,876	0.37%
Lathrup Village	4,319	4,368	0.23%
Leonard	363	376	0.71%
Lyon	12,196	12,724	0.85%
Madison Heights	30,833	31,113	0.18%
Milford Township	9,690	10,035	0.70%
Milford Village	6,538	6,670	0.40%
Northville	3,274	3,297	0.14%
Novi	56,518	60,699	1.44%
Novi Township	172	172	0.06%
Oak Park	31,929	32,204	0.17%
Oakland Township	16,755	18,474	1.97%
Orchard Lake Village	2,277	2,312	0.30%
Orion Township	32,259	33,047	0.48%
Ortonville	1,522	1,526	0.05%
Oxford Township	15,845	17,396	1.88%
Oxford Village	3,574	3,612	0.21%
Pleasant Ridge	2,526	2,541	0.12%
Pontiac	67,893	68,866	0.29%
Rochester	11,697	12,722	1.69%
Rochester Hills	70,693	74,496	0.49%
Rose Township	6,388	6,487	0.31%
Royal Oak	58,929	59,324	0.13%
Royal Oak Township	2,831	2,865	0.24%
South Lyon	11,981	12,827	1.37%

## Oakland County Municipality Population Trends

<b>City, Village or Township</b>	<b>2006 Estimated Population</b>	<b>2011 Projected Population</b>	<b>2009-2011 Projected Growth (%)</b>
Southfield	78,936	80,183	0.31%
Southfield Township	25	26	0.15%
Springfield	14,240	14,665	0.59%
Sylvan Lake	1,688	1,697	0.11%
Troy	83,221	84,838	0.39%
Walled Lake	7,585	7,979	1.02%
Waterford	73,931	75,261	0.36%
West Bloomfield	66,920	68,241	0.39%
White Lake	30,342	31,356	0.66%
Wixom	13,929	14,292	0.52%
Wolverine Lake	4,339	4,358	0.09%

**Source:** *ESRI Business Information Solutions*

**Please Note:** *These figures were extracted from reports generated from spatial queries utilizing the Oakland County CVT SDE layer along with ESRI's Business Analyst Software.*

**Updated:** *January 2007.*

**Compiled By:** *Oakland County Planning and Economic Development Services.*

# Fall 2006 OTD Demo, Home Campus Highland Lakes, City of Residency

[DataSet1] C:\Documents and Settings\elshirey\My Documents\Fall 2006 OTD Demo.sav

## Statistics

City

N	Valid	6183
	Missing	0

## City

	Frequency	Percent	Valid Percent	Cumulative Percent
Valid				
Allen Park	1	.0	.0	.0
Allenton	1	.0	.0	.0
Almont	2	.0	.0	.1
Anderson	1	.0	.0	.1
Ann Arbor	1	.0	.0	.1
Attica	1	.0	.0	.1
Auburn Hills	49	.8	.8	.9
Belleville	2	.0	.0	.9
Berkley	27	.4	.4	1.4
Beverly Hills	3	.0	.0	1.4
Birmingham	15	.2	.2	1.7
Bloomfield	16	.3	.3	1.9
Bloomfield Hills	27	.4	.4	2.4
Brighton	21	.3	.3	2.7
Byron	2	.0	.0	2.7
Canton	10	.2	.2	2.9
Casco	1	.0	.0	2.9
Casco Township	1	.0	.0	2.9
Cass City	1	.0	.0	2.9
Chesterfield	1	.0	.0	3.0
Chesterfield Townshi	1	.0	.0	3.0
China Twp	1	.0	.0	3.0
Clarkston	284	4.6	4.6	7.6
Clawson	17	.3	.3	7.9
Clinton Township	1	.0	.0	7.9
Clinton Twp	8	.1	.1	8.0
Cmmrce Township	3	.0	.0	8.1
Comerce	2	.0	.0	8.1
Comerce	215	3.5	3.5	11.6
Comerce Township	11	.2	.2	11.7
Comerce Twp	155	2.5	2.5	14.2
Comerce Twp.	8	.1	.1	14.4
Comerce Twsp	1	.0	.0	14.4
Comstock Park	1	.0	.0	14.4
Davisburg	90	1.5	1.5	15.9
Davison	2	.0	.0	15.9
Dearborn	2	.0	.0	15.9
Dearborn Heights	6	.1	.1	16.0
Dearborn Hgts	1	.0	.0	16.0
Dearborn Hts	1	.0	.0	16.1
Detroit	171	2.8	2.8	18.8

City

	Frequency	Percent	Valid Percent	Cumulative Percent
Valid Detroit ,	1	.0	.0	18.8
Dryden	2	.0	.0	18.9
Durand	1	.0	.0	18.9
East Lansing	1	.0	.0	18.9
Ecorse	1	.0	.0	18.9
Elkton	1	.0	.0	18.9
Farmingtn Hls	1	.0	.0	19.0
Farmington	7	.1	.1	19.1
Farmington Hill	2	.0	.0	19.1
Farmington Hills	94	1.5	1.5	20.6
Farmington HI	6	.1	.1	20.7
Farmington Hls	2	.0	.0	20.8
Farmingtonhills	1	.0	.0	20.8
Fenton	40	.6	.6	21.4
Ferdale	1	.0	.0	21.4
Ferndale	43	.7	.7	22.1
Findlay	1	.0	.0	22.1
Flint	8	.1	.1	22.3
Flushing	3	.0	.0	22.3
Fowlerville	1	.0	.0	22.3
Franklin	1	.0	.0	22.4
Frmington Hills	8	.1	.1	22.5
Ft. Gratiot	1	.0	.0	22.5
Garden City	3	.0	.0	22.5
Goodrich	5	.1	.1	22.6
Grand Blanc	11	.2	.2	22.8
Hamburg	1	.0	.0	22.8
Hamtramck	3	.0	.0	22.9
Harper Woods	1	.0	.0	22.9
Harrison Township	2	.0	.0	22.9
Hartland	16	.3	.3	23.2
Hazel Park	50	.8	.8	24.0
Highland	345	5.6	5.6	29.6
Highland Park	3	.0	.0	29.6
Highland Twp	4	.1	.1	29.7
Holly	134	2.2	2.2	31.8
Howell	26	.4	.4	32.3
Huntington Wd	1	.0	.0	32.3
Huntington Woods	2	.0	.0	32.3
Inkster	1	.0	.0	32.3
Johannesburg	1	.0	.0	32.3
Keego Harbor	28	.5	.5	32.8
Lake Angelus	2	.0	.0	32.8
Lake Orion	62	1.0	1.0	33.8
Lapeer	6	.1	.1	33.9
Lathrup Village	3	.0	.0	34.0
Leonard	5	.1	.1	34.1
Lincoln Park	2	.0	.0	34.1
Linden	7	.1	.1	34.2
Livonia	15	.2	.2	34.4
Macomb	7	.1	.1	34.6

City

		Frequency	Percent	Valid Percent	Cumulative Percent
Valid	Macomb Twp	4	.1	.1	34.6
	Madison Heights	21	.3	.3	35.0
	Madison Hgts	14	.2	.2	35.2
	Madison Hts	10	.2	.2	35.4
	Madisonheights	1	.0	.0	35.4
	Maison Heights	1	.0	.0	35.4
	Marine City	1	.0	.0	35.4
	Metamora	2	.0	.0	35.4
	Midland	1	.0	.0	35.5
	Milford	253	4.1	4.1	39.5
	Mt Morris	1	.0	.0	39.6
	New Boston	1	.0	.0	39.6
	New Haven	1	.0	.0	39.6
	New Hudson	11	.2	.2	39.8
	North Branch	1	.0	.0	39.8
	Northville	8	.1	.1	39.9
	Novi	61	1.0	1.0	40.9
	Novi,	22	.4	.4	41.3
	Oak Park	75	1.2	1.2	42.5
	Oakland	8	.1	.1	42.6
	Oakland Twp	1	.0	.0	42.6
	Oakpark	1	.0	.0	42.6
	Orchard Lake	10	.2	.2	42.8
	Orchard Lk	1	.0	.0	42.8
	Orion	15	.2	.2	43.1
	Ortonville	60	1.0	1.0	44.0
	Oscoda	1	.0	.0	44.0
	Ossineke	1	.0	.0	44.1
	Oxford	67	1.1	1.1	45.1
	Pinckney	2	.0	.0	45.2
	Plymouth	4	.1	.1	45.2
	Pontiac	158	2.6	2.6	47.8
	Port Huron	1	.0	.0	47.8
	Redford	17	.3	.3	48.1
	Redford Township	1	.0	.0	48.1
	Redford Twp	3	.0	.0	48.1
	Redford Twp.	1	.0	.0	48.2
	Richmond	1	.0	.0	48.2
	Rochester	26	.4	.4	48.6
	Rochester Hills	94	1.5	1.5	50.1
	Rochester Hls	11	.2	.2	50.3
	Rochesterhills	1	.0	.0	50.3
	Romeo	1	.0	.0	50.3
	Romulus	1	.0	.0	50.3
	Roscommon	1	.0	.0	50.4
	Roseville	3	.0	.0	50.4
	Royal Oak	90	1.5	1.5	51.9
	Saginaw	1	.0	.0	51.9
	Shelby	2	.0	.0	51.9
	Shelby Township	6	.1	.1	52.0
	Shelby Twp	9	.1	.1	52.2



City

	Frequency	Percent	Valid Percent	Cumulative Percent
Valid Shelby Twp.	1	.0	.0	52.2
South Lyon	22	.4	.4	52.5
Southfield	193	3.1	3.1	55.7
Spring Lake	1	.0	.0	55.7
St Clair Shores	1	.0	.0	55.7
St. Clair Shores	1	.0	.0	55.7
Sterling Heights	25	.4	.4	56.1
Sterling Ht.S	1	.0	.0	56.1
Sterling Hts	5	.1	.1	56.2
Sylvan Lake	7	.1	.1	56.3
Taylor	6	.1	.1	56.4
Troy	99	1.6	1.6	58.0
Union Lake	5	.1	.1	58.1
Utica	2	.0	.0	58.1
W Bloomfield	4	.1	.1	58.2
Walled Lake	122	2.0	2.0	60.2
Walled Lk	57	.9	.9	61.1
Warren	27	.4	.4	61.5
Washington	2	.0	.0	61.6
Washington Twp	1	.0	.0	61.6
Waterfield	1	.0	.0	61.6
Waterford	1324	21.4	21.4	83.0
Waterford Township	1	.0	.0	83.0
Wayne	1	.0	.0	83.0
West Bloomfeld	1	.0	.0	83.1
West Bloomfied	1	.0	.0	83.1
West Bloomfield	311	5.0	5.0	88.1
West Branch	1	.0	.0	88.1
Westbloomfield	3	.0	.0	88.2
Westland	10	.2	.2	88.3
White	1	.0	.0	88.3
White Lake	540	8.7	8.7	97.1
White Lake Township	1	.0	.0	97.1
White Lk	3	.0	.0	97.1
Whitelake	1	.0	.0	97.2
Whitmore Lake	1	.0	.0	97.2
Windsor	1	.0	.0	97.2
Wixom	153	2.5	2.5	99.7
Wolverine Lake	17	.3	.3	99.9
Wolverine Lk	2	.0	.0	100.0
Woodhaven	1	.0	.0	100.0
Wyandotte	1	.0	.0	100.0
Total	6183	100.0	100.0	