

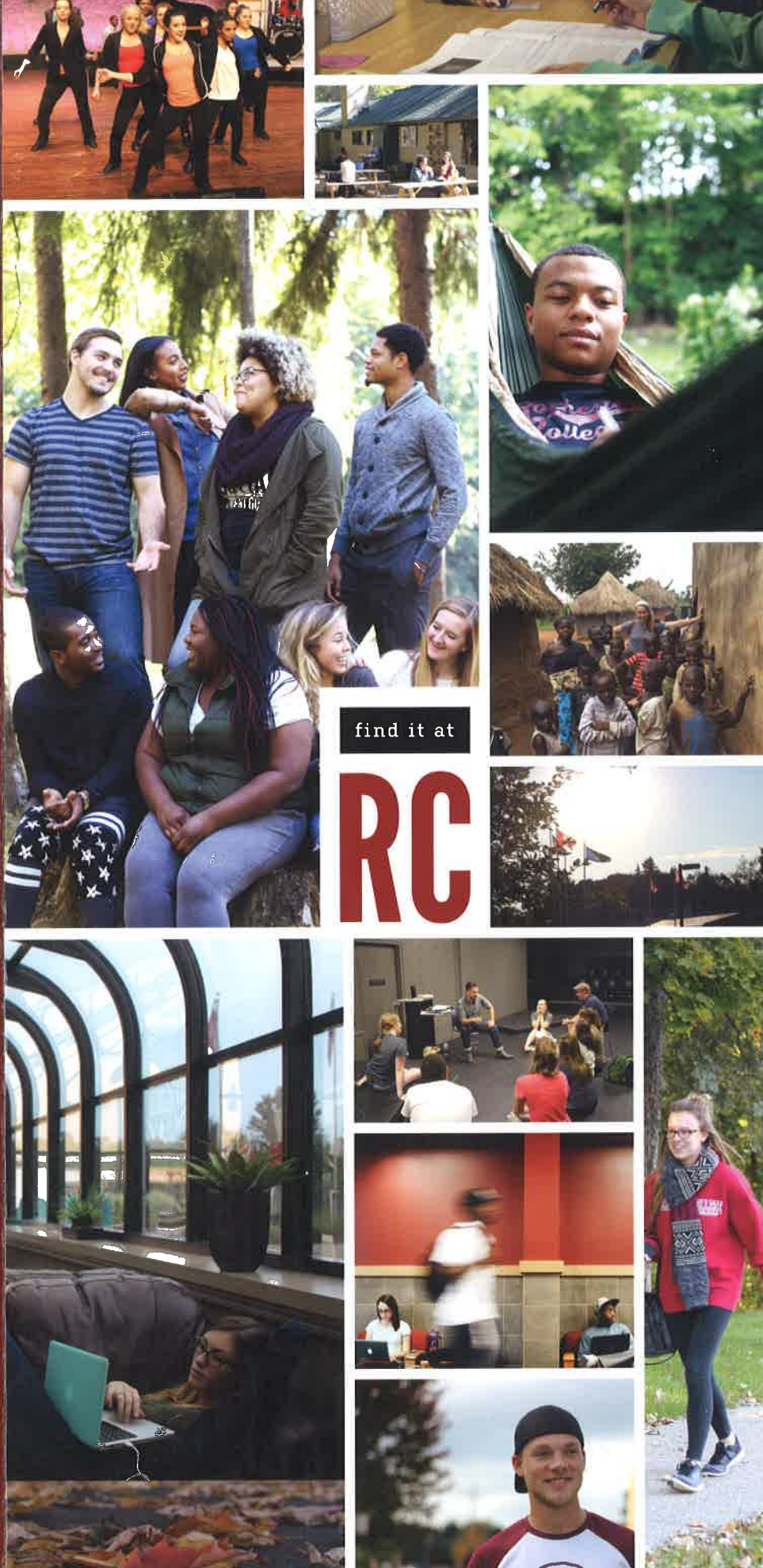
Non-Profit Org.  
U.S. Postage  
PAID  
Rochester, Mich.  
Permit No. 86



**ROCHESTER  
COLLEGE**

800 West Avon Road  
Rochester Hills, Michigan 48307  
[www.rc.edu](http://www.rc.edu)

CHANGE SERVICE REQUESTED





97%

OF TRADITIONAL STUDENTS  
RECEIVE FINANCIAL AID

including scholarships, grants, and loans from  
federal, state and institutional sources

1,172

STUDENTS  
from 18 states  
and 10 nations

average  
CLASS  
SIZE of

12

We offer the choice of a  
**MacBook Pro** or **iPad**  
TO FULL-TIME  
TRADITIONAL STUDENTS  
(must be new and/or transferring  
29 or fewer credits; deadline applies)



86%

of graduates were  
employed, enrolled in graduate school,  
or engaged in an internship  
within 6 months of graduation

OUR CAMPUS IS **83 PRISTINE ACRES**  
LOCATED A SHORT WALK AWAY FROM DOWNTOWN ROCHESTER  
AND NO MORE THAN 30 MILES FROM  
**MUSEUMS • MARKETS • MALLS • CONCERTS**  
**PRO SPORTS • THE AUTOMOVITE SCENE • OUTDOOR ADVENTURE**  
FOOD TRUCKS TO FINE DINING • WORLD CLASS ENTERTAINMENT  
NATURAL BEAUTY, AND ALL KINDS OF OTHER FUN TO DISCOVER

CNN's Money Magazine recognized  
Rochester as one of the top places  
to live and the very

**BEST IN ALL OF  
MICHIGAN!**

STUDENT TO  
FACULTY RATIO **12:1**





find your calling.

# DEGREE OPTIONS

## BACHELOR OF ARTS (BA)

### ENGLISH

### INTERDISCIPLINARY STUDIES

Concentrations are available in Art, Bible, Business, English, General Science, History, Honors Leadership, International Studies, Mass Communication, Mathematics, Ministry, Music, Performing Arts, Pre-Law, Pre-Physician's Assistant, Professional Writing, Psychology, Social Entrepreneurship, Leadership and Theatre

### MUSICAL THEATRE

### THEATRE

## BACHELOR OF BUSINESS ADMINISTRATION (BBA)

### ACCOUNTING

### MANAGEMENT\*

### SOCIAL ENTREPRENEURSHIP

### SPORTS MANAGEMENT

### STRATEGIC LEADERSHIP\*

## BACHELOR OF SCIENCE (BS)

### BEHAVIORAL SCIENCE

Concentration in Social Work

### BIBLICAL STUDIES

### BIOLOGY

### CHRISTIAN MINISTRY\*

### EARLY CHILDHOOD STUDIES\*

### EDUCATION, ELEMENTARY

Majors are available in Early Childhood (ZS Endorsement), Integrated Science, Language Arts, Learning Disabilities, Mathematics and Social Studies Education

### EDUCATION, SECONDARY

Majors are available in English, Integrated Science, Learning Disabilities, Mathematics and Social Studies

### HEALTH SCIENCES

Tracks are available in Pre-Pharmacy and Pre-Physical Therapy

### INTERDISCIPLINARY STUDIES

Concentrations are available in Art, Bible, Business, English, General Science, History, Honors Leadership, International Studies, Mass Communication, Mathematics, Ministry, Music, Performing Arts, Pre-Law, Pre-Med, Pre-Physician's Assistant, Professional Writing, Psychology, Social Entrepreneurship, Leadership and Theatre

### MASS COMMUNICATION\*

Tracks are available in Broadcast Media, Graphic Design, Journalism, Public Relations and Media and Communication Arts

### MUSICAL THEATRE

### NEUROPSYCHOLOGY

### PSYCHOLOGY\*

### TECHNICAL AND PROFESSIONAL STUDIES

This program incorporates an approved certificate program in a technical field from another institution into a BS degree from Rochester College

### THEATRE

### THEATRE MANAGEMENT

### URBAN MINISTRY

### WORSHIP MINISTRY

### YOUTH AND FAMILY MINISTRY

## BACHELOR OF SCIENCE IN NURSING (BSN)

### RN TO BSN

## ASSOCIATE OF ARTS (AA)

\*accelerated degree offering

Our advisers will help you choose your path, then stay on track. Wondering what these programs look like? Visit [RC.EDU/CATALOG](http://RC.EDU/CATALOG)

find your inner warrior.

# ATHLETICS

The administration, faculty and coaching staff of Rochester College desire for each athlete to achieve his or her full potential in every area of life. We are committed to providing opportunities for growth through practice, competition and personal relationships. Developing God-given potential, accepting responsibility and striving for excellence are vital dimensions of growth as Christian athletes and as people. Members of the RC athletic program will represent the institution in a positive manner, always upholding the Christian beliefs the college has been founded upon. Athletics are an important part of Rochester College's pursuit of excellence.

### NATIONAL TITLES IN:

MEN'S BASKETBALL • MEN'S CROSS COUNTRY • MEN'S GOLF • MEN'S SOCCER • WOMEN'S VOLLEYBALL • SOFTBALL

### INTERCOLLEGIATE SPORTS

BASEBALL (men's)\*  
BASKETBALL (men's & women's)\*  
BOWLING (men's & women's)  
COMPETITIVE CHEER (men's & women's)  
CROSS COUNTRY (men's & women's)

CLUB SPORT  
ACHA D1 HOCKEY (men's)

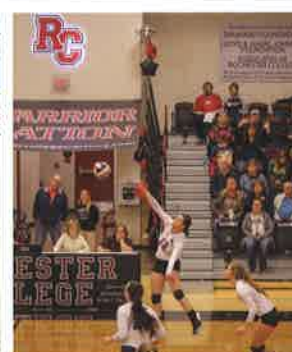
GOLF (men's & women's)  
TRACK & FIELD (men's & women's)  
SOCCER (men's & women's)  
SOFTBALL (women's)  
VOLLEYBALL (women's)

\*varsity & junior varsity



### WELCOME HOME WARRIORS

Rochester College students receive free admission to every sporting event on campus.





find your place.

# CAMPUS LIFE

find your start.

# ADMISSIONS

HANGOUTS + HOTSPOTS



## RESIDENCE HALLS

You'll be right in the middle of the action, with easy access to classes, dining, recreation and events. Plus, students who live on campus are more likely to graduate in four years.



## LAKE NORCENTRA PARK

Grab a hammock from The Center for Student Life, explore the great outdoors and meet up with friends to study in the Cheer Garden.



## WARRIOR CENTER

This exercise facility is available to all full-time students seven days a week and offers both cardio and strength training areas.



## GARTH PLEASANT ARENA

Our new arena is home to Warrior volleyball and basketball, and the RC community gathers here twice a week for Chapel.



## KIBO CORNER

This on-campus coffee shop gives 100% of profits to Kibo Group International for sustainable development projects in East Africa.



## THE ACE LAB & THE CHILL

The Academic Center for Excellence (ACE) Lab offers study resources, tutoring and supplemental instruction at no cost to students. The Community Hub for Integrated Living and Learning (CHILL) is a cozy, quiet place to study, work on a group project or hang out between classes.

## STUDENT ACTIVITIES

A Cappella Chorus • Campus Ministry • Campus Puppy Program  
Greek Life • Intramurals • Student Government • Study Abroad • Theatre  
The Shield Student Media • Traveling Performance Groups  
...AND A WHOLE LOT MORE EVENTS, CLUBS AND GET TOGETHERS TO KEEP YOUR CALENDAR FULL!

## WARRIOR FRIDAY CAMPUS PREVIEW DATES

Being on campus and experiencing our community first-hand is the best way to decide if RC is right for you. Register for a Warrior Friday at [rc.edu/warriorfriday](http://rc.edu/warriorfriday).

NOV.	JAN.	FEB.	MARCH	APRIL
<b>10</b>	<b>26</b>	<b>23</b>	<b>23</b>	<b>13</b>
2017	2018	2018	2018	2018

☛ Prefer something more one-on-one? Talk to your recruiter about a personalized visit.

## APPLY ONLINE AT [RC.EDU/APPLY](http://RC.EDU/APPLY)

☛ Visit [rc.edu/costcalc](http://rc.edu/costcalc) for an estimate on the amount of financial aid RC can help with.

## CONNECT TO OUR CAMPUS DOWNLOAD THE RC APP



## TRADITIONAL TUITION & FEES

Annual Tuition	\$21,116	Block rate (12-18 credit hours per semester)
Room & Board	\$7,160	Suite-style residence halls & 19 meals/week
Student Fees	\$1,196	Student support, IT and other services

**Est. Gross Cost of Attendance** Residential **\$30,680** | Commuter **\$22,612**

Annual costs for on-campus and commuter students include tuition and traditional student support fees. The cost of books and supplies is not included in these figures and varies depending on the courses you take. For pricing on the accelerated program, visit [www.rc.edu/acceleratedtuition](http://www.rc.edu/acceleratedtuition)

## MORE QUESTIONS?

248.218.2222 | [WWW.RC.EDU](http://WWW.RC.EDU)  
800 WEST AVON ROAD, ROCHESTER HILLS, MI 48307

