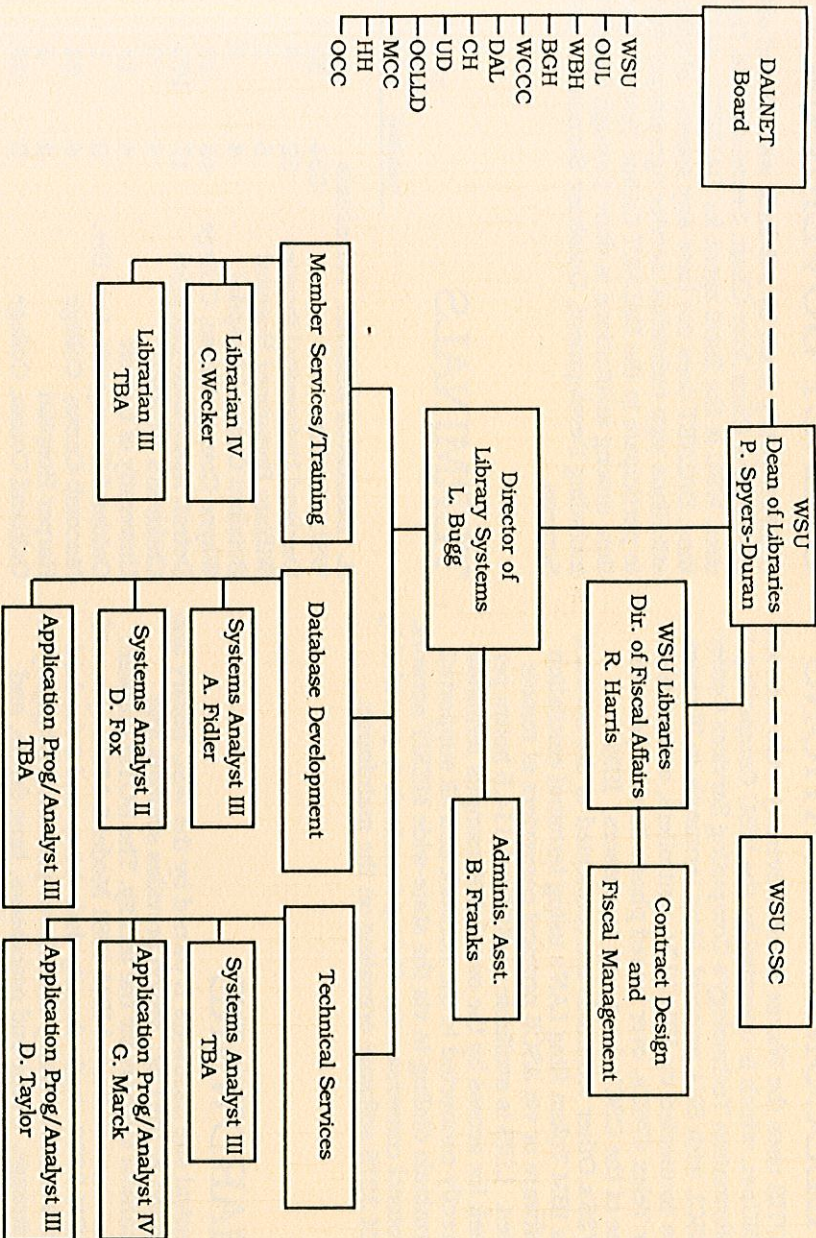


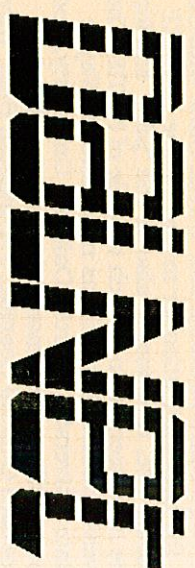
ORGANIZATION



DALNET DATABASE STATISTICS

Bibliographic Records	Loaded as of	Anticipated N o.	Total by
	June 1989	added in 12 mos	June 1990
WSU Libraries, incl. Center for Res. Libs	1,079,890	350,000	1,429,890
Oakland Univ. Libraries (OUL)	234,045	120,000	354,045
Beaumont Hosp., Royal Oak (WBH)	10,213	1,300	11,513
Botsford General Hospital (BGH)	2,832	200	3,032
Wayne County Comm. College (WCCC)	35,237	1,800	37,037
Detroit Public Library (DAL)	696,101	312,000	1,008,101
Children's Hosp. of Michigan (CH)	3,791	500	4,291
University of Detroit (UD)	228,114	49,000	277,114
Oakland County Library Law Division (OCLLD)	527	2,500	3,027
Macomb Comm. College (MCC)	99,000	10,000	109,000
Harper Hospital, Detroit (HH)	10,434	900	11,334
Oakland Comm. College (OCC)	0	135,000	135,000
Total	2,400,184	983,200	3,383,384

Facts about



Systems Office
242 Purdy Library
Detroit, Michigan 48202
(313) 577-4058

DALNET

DALNET, the *Detroit Area Library Network*, is a non-profit corporation formed in 1985 to enable its members to participate in improved library services through shared automation. Wayne State University is the host institution for managing the DALNET central site, functioning also as the "pilot" site for the implementation of each module of NOTIS. The twelve member institutions now include: Wayne State University, Detroit; Oakland University, Rochester; William Beaumont Hospital, Royal Oak; Botsford General Hospital, Farmington Hills; Wayne County Community College, Detroit; the Detroit Associated Libraries, including the Detroit Public Library and the McGregor Library of Highland Park; Children's Hospital of Michigan; the University of Detroit; the Oakland County Library Law Division; Macomb Community College, Warren; Harper Hospital, Detroit; and Oakland Community College.

SOFTWARE

The NOTIS software was selected in 1985 to meet the automation requirements of Wayne State's Libraries and those of the other DALNET libraries.

Installed at WSU in December 1985, NOTIS, the *Northwestern Online Total Integrated System*, is a software package developed in the 1970's for Northwestern University Library to run on an IBM, or compatible, mainframe. Under continual enhancement, NOTIS currently supports cataloging/authority control, acquisitions/serials control, circulation, and online catalog functions, using a central bibliographic database. The online catalog, named LUIS for Library User Information System, displays not only bibliographic and holdings data, but also circulation and acquisitions information, to library users.

NOTIS Release 4.5, MVS version, is tested and installed. NOTIS at WSU runs with: MVS, CICS, VTAM, ACF2 (security), Syncsort, VPS (distributed printing), SAS (report writer), and CICS Monitor software systems.

NOTIS is implemented module by module, at each DALNET site, beginning with the loading of bibliographic records. Implementation of the NOTIS modules is supported by WSU Libraries.

TELECOMMUNICATIONS

NOTIS uses the Wayne State University-wide network, WSUnet, which is operated by the WSU Computing & Information Technology's Computing Services Center (CSC), with SNA protocol. Most terminals in libraries are connected via IBM 3174 controllers, or equivalent for Telex 476L's, over leased phone lines to ports on one of the CSC's front-end processors, IBM 3725's. Other terminals are connected to the network via IBM Token Ring LAN's using terminal emulation software or via ASCII protocol converters at remote sites. LUIS is available on WSUnet 114.5 hours per week for access by the over 1,200 campus terminals directly connected to the network and all supported terminals dialing in via the state-wide MERT network. Protocol conversion for dial-up terminals is provided by SIM 3278 software operating on the mainframe.

HARDWARE

Central site hardware is owned by the WSU library and located at the CSC, which provides systems and technical support for the facility. The NOTIS software runs on a dedicated IBM 4381 Model 2 16Mb cpu, with 4 IBM 3380 single-density disk drives and 2 Amdahl 6380 double density disk drives providing 20 gigabytes of storage. Front-end processors, tape drives, and system printers are shared with WSU administrative computing. The IBM 3081 used for administrative computing is a backup cpu for NOTIS. Hardware expansions take place as needed.

Relationship to WSU Computing Services Center (CSC)

The WSU Libraries employ and supervise all systems and application programmer analysis and other technical staff necessary to develop this multi-type library network. The Libraries have negotiated on behalf of DALNET members a facilities service agreement with the WSU Computing Services Center to provide housing and daily operation of the central site hardware. WSU Libraries reimburses the Computing Services Center for costs of operating the Libraries' mainframe. The Computing Services Center staff also provides valuable consulting services as needed.

DALNET GOVERNANCE

DALNET policy is set by a Board, with elected officers, including a Chair, Vice-Chair, Secretary, and Treasurer. WSU is the fiscal agent for DALNET. At this time, DALNET does not have any assets. Member institutions sign individual service agreements with WSU to participate in the DALNET Online System. Coordination among institutions is done through Committees including Development, Database Standards, and LUIS Screens.

TERMINALS

	To be installed		Total
	Installed	89/90	

A. Dedicated DALNET Terminals			
WSU Libraries	254	30	284
Oakland University Libraries	32	6	38
William Beaumont Hospital	5	1	6
Botsford General Hospital	4	0	4
Wayne County Comm. College	45	12	57
Detroit Associated Libraries	17	100	117
Children's Hospital	4	0	4
University of Detroit	4	13	17
Oakland County Lib. Law Div.	9	1	10
Macomb Comm. College	4	24	28
Harper Hospital	0	4	4
Oakland Comm. College	0	30	30

B. Remote Access Terminals			
WSU Campus	1,500	200	1,700
Other Campuses		300	300
Total	1,878	721	2,599

Terminals currently installed for dedicated access include: Telex 476L's for OCLC transfer and data entry; pc's with 3270 emulation; IBM 3178/79 and 3191/92 terminals; Memorex 2291's; Telex 191's; Wyse WY60's; and IBM Token Ring using IBM PS/2's.