

**WAYNE STATE
UNIVERSITY LIBRARY SYSTEM**



DALNET

In today's information-intensive society, library users often find it necessary to go beyond the resources of a single library system. When individual libraries combine efforts, the value of their resources increases dramatically.

WAYNE STATE UNIVERSITY

Wayne State University (WSU) is one of the leading research institutions in the United States. The WSU Library System is ranked among the top research library systems in the country. A long history of cooperation between WSU's Library System and other metropolitan Detroit libraries led to the creation of the Detroit Area Library Network, DALNET, for which Wayne State University serves as the host institution.

DALNET

DALNET is a nonprofit corporation formed in 1985 to enable its members to participate in improved library services through shared automation. DALNET, the most comprehensive program of its kind in Michigan and a model for others in the U.S. and Canada, offers a unique opportunity for users to access vast resources. Its online catalog combines the resources of a major public library, professional health science and law libraries and important academic libraries.

DALNET policy is set by its Board. Elected officers include the Chair, Vice-Chair, Secretary and Treasurer. WSU is the fiscal agent for DALNET. Member institutions sign individual service agreements with WSU to participate in the DALNET Online System. Coordination among institutions is done through committees, including Circulation & Access, and Database Standards.

DALNET Member Library Systems

- Wayne State University, Detroit
- Oakland University, Rochester
- William Beaumont Hospital, Royal Oak
- Botsford General Hospital, Farmington Hills
- Wayne County Community College, Detroit
- The Detroit Associated Libraries, including the Detroit Public Library and the McGregor Library of Highland Park
- Children's Hospital of Michigan, Detroit
- University of Detroit, Detroit
- Oakland County Library-Law Division, Pontiac
- Macomb Community College, Warren
- Harper Hospital, Detroit
- Oakland Community College, Auburn Hills

BENEFITS

For DALNET Member Libraries the benefits of membership include:

- A unique opportunity for participation in an automated information network.
- Substantial improvement in the quality of current services provided.
- Modernized, state-of-the-art, computerized services.
- Improvement in resource management and control.
- Shared online union catalog identifying each member's resources.
- Shared circulation and serial control systems enabling each library's users to know the availability of materials.
- Increased capability for cooperative acquisitions and collection development.
- Shared borrower files to facilitate the borrowing agreements.
- Management information to better analyze and control use of the Detroit area's information resources.
- Reduced costs of separately automating each library through shared central site preparation, system personnel, system operation, databases, and of hardware and software.
- A large, multi-institution, multi-type automated library network that is more attractive to external funding agencies than individual library automation projects.
- A comprehensive, shared automated system that enables Detroit area libraries to contribute significantly to the emerging Information Age.

For DALNET Library Users the benefits include:

- Library users have access to information on the resources owned by DALNET participating libraries through one online catalog, LUIS, the Library User Information System.
- When searching LUIS, from library terminal or from home, library users will know:
 - the materials owned by all DALNET libraries;
 - location of materials in each library;
 - whether those materials are checked out or on the shelf; and
 - which issues of periodicals have been received.
- As each library determines access and availability of materials it owns, the library cards they issue may enable users to:
 - check out materials at that library;
 - have a hold placed on a book currently checked out from that library; and
 - access many other services.

INTEGRATED LIBRARY SYSTEM

NOTIS (the Northwestern Online Total Integrated System) is a comprehensive automated library management system. Its software was selected in 1985 to meet the automation requirements of Wayne State's Libraries and those of the other DALNET libraries. This software package provides an online catalog of information about each member's collections. A library user can tell if a member library owns a particular volume, where that volume is in the system, and if it has been checked out. The online catalog shared by DALNET member libraries now includes nearly 2.5 million bibliographic records.

DALNET is one of the first fully computerized, multi-type library consortia in the United States. It uses NOTIS software to create a shared, multi-institution online catalog. During the 1986 NOTIS Users Group Meeting in Evanston, Illinois, DALNET was given an award for its pioneering efforts in developing consortium use of NOTIS integrated library system software on IBM mainframe hardware.

The NOTIS Library Management System was developed in the 1970's for Northwestern University Library to run on an IBM, or compatible, mainframe. Under continual enhancement, the NOTIS software currently provides an online public catalog, circulation, acquisitions, cataloging and periodicals control modules. The online catalog displays not only card catalog and holdings data but also circulation and ordering information to library users. The Wayne State University/DALNET site functions as a leader and source of NOTIS expertise for the entire state.

Several other Michigan libraries have selected and are installing the NOTIS software. The potential is being built for state-wide access to these automated library installations, perhaps with the MERIT Computer Network as the telecommunications vehicle. The DALNET LUIS database is one of several accessible via the MERIT network.

NOTIS uses the Wayne State University-wide network, WSUnet, which is operated by the WSU Computing & Information Technology's Computing Services Center (CSC), with SNA protocol. Most terminals in libraries are connected via IBM 3174 controllers, or equivalent, over leased phone lines to ports on front-end processors, IBM 3725's. Other terminals are connected to the network via IBM Token Ring LAN's using terminal emulation software or via ASCII protocol converters at remote sites. LUIS is available on WSUnet for access by terminals directly connected to the network and by all supported terminals dialing-in via the state-wide MERIT

network. Protocol conversion for dial-up terminals is provided by SIM 3278 software operating on the mainframe.

Software

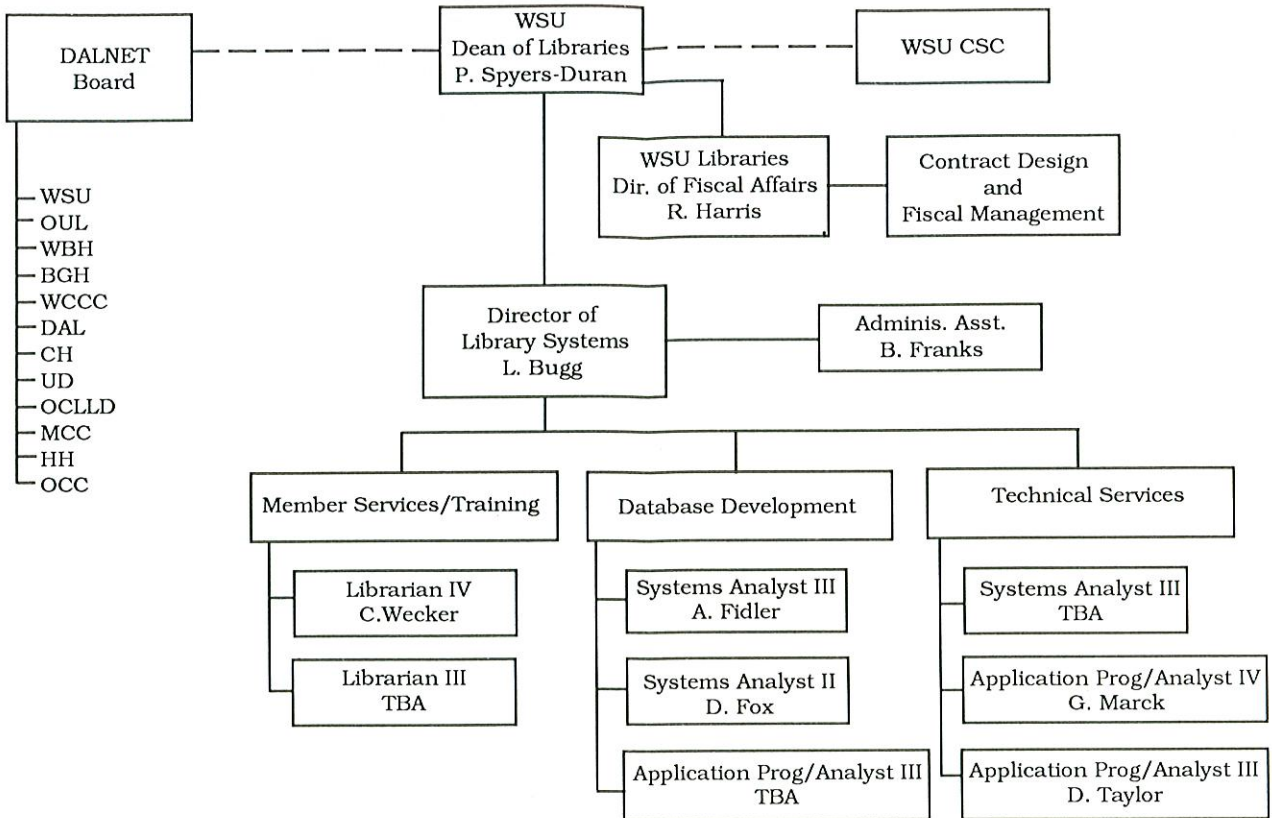
Wayne State University, in addition to serving as "host" institution for DALNET, functions also as the "pilot" site for the implementation of each NOTIS module. Then, with the assistance of the WSU Library System, NOTIS is implemented module by module at each DALNET site, beginning with the loading of bibliographic records. NOTIS Release 4.5 MVS version, has been tested and installed. NOTIS at WSU runs with: MVS, CICS, VTAM, ACF2 (security), Syncsort, VPS (distributed printing), SAS (report writer), CICS Monitor, and Omegamon software systems.

Terminals

	<u>Estimated Numbers 89/90</u>
<u>A. Library Terminals</u>	
WSU Libraries	320
Oakland University Libraries	50
William Beaumont Hospital	6
Botsford General Hospital	4
Wayne County Comm. College	62
Detroit Associated Libraries	119
Children's Hospital	4
University of Detroit	30
Oakland Co. Library/Law Div.	9
Macomb Community College	28
Harper Hospital	4
Oakland Community College	30
Sub-Total	666
<u>B. Campus Network</u>	
WSU Campus	2,200
Other Campuses	300
Total	3,166

Terminals currently installed for dedicated access include: Telex 476L's for OCLC transfer and data entry; pc's with 3270 emulation; IBM 3178/79 and 3191/92 terminals; Memorex 2291's; Telex 191's; Wyse WY60's; and IBM Token Ring using IBM PS/2's.

ORGANIZATION



Hardware/Telecommunications

DALNET central site hardware is owned by the Wayne State University Library System. The NOTIS software runs on a dedicated IBM 4381 Model 2 16Mb cpu, with IBM 3380 single-density disk drives and Amdahl 6380 double density disk drives providing 20 gigabytes of storage, soon to be expanded to 30 gigabytes. Front-end processors, tape drives, and system printers are shared with WSU administrative computing. The IBM 3081 used for administrative computing is a backup cpu for NOTIS. Hardware expansions take place as needed.

The WSU Library System employs and supervises all systems and application programmer analysts and other technical staff necessary to develop this multi-type library network. There is a facilities service agreement with the Computing Services Center to provide housing and daily operation of the central site hardware. WSU Library System reimburses the Computing Services Center for operating the Library System's mainframe. Computing Services Center staff also provide valuable consulting services as needed.

DALNET Database Statistics

	<u>Bibliographic Records as of 9/89</u>	<u>Additions Anticipated 9/90</u>	<u>Estimated Total 9/90</u>
WSU Libraries, incl. CRL	1,109,096	287,000	1,396,096
Oakland Univ. Libraries	237,346	117,000	354,346
Beaumont Hospital	10,569	1,300	11,869
Botsford Hospital	2,974	200	3,174
Wayne Co. Comm. College	35,695	1,800	37,495
Detroit Public Library	700,284	311,000	1,011,284
Children's Hospital	3,840	500	4,349
University of Detroit	253,500	5,000	258,500
Oakland Co. Library/Law	3,975	1,500	5,475
Macomb Community College	101,226	1,800	103,026
Harper Hospital	10,686	1,400	12,086
Oakland Community College	0	120,000	120,000
Total	2,469,200	848,500	3,317,700

FOR MORE INFORMATION

For general information on the University Library System, write or phone: Office of the Dean, Wayne State University Library System, 134 Purdy Library, Detroit, MI 48202, (313) 577-4020.



Wayne State University
University Library System