

Institutional Research Report

**Library Technician
Degree and Credit Hour Trends Reports
for
Curriculum Review Committee**



**OAKLAND
COMMUNITY
COLLEGE**

TABLE OF CONTENTS

Library Technician Degree Trends Report

LTN Degree Trends Summary

LTN Ten-Year Trend

LTN Rate of Change

LTN Three-Year Moving Mean

College-Wide Ten-Year Trend

Library Technical Services Credit Hour Trends Report

LIB Credit Hour Trends Summary

LIB Ten-Year Trend

LIB Three-Year Moving Mean

LIB Rate of Change

College-Wide Ten-Year Trend



OAKLAND
COMMUNITY
COLLEGE

Degree Trends Report
Library Technician
LTN
2004-05

Prepared by:
Oakland Community College
Office of Institutional Research
January 19, 2006

**Oakland Community College
Degree Trends Report
Library Technician (LTN)
1995-96 through 2004-05**

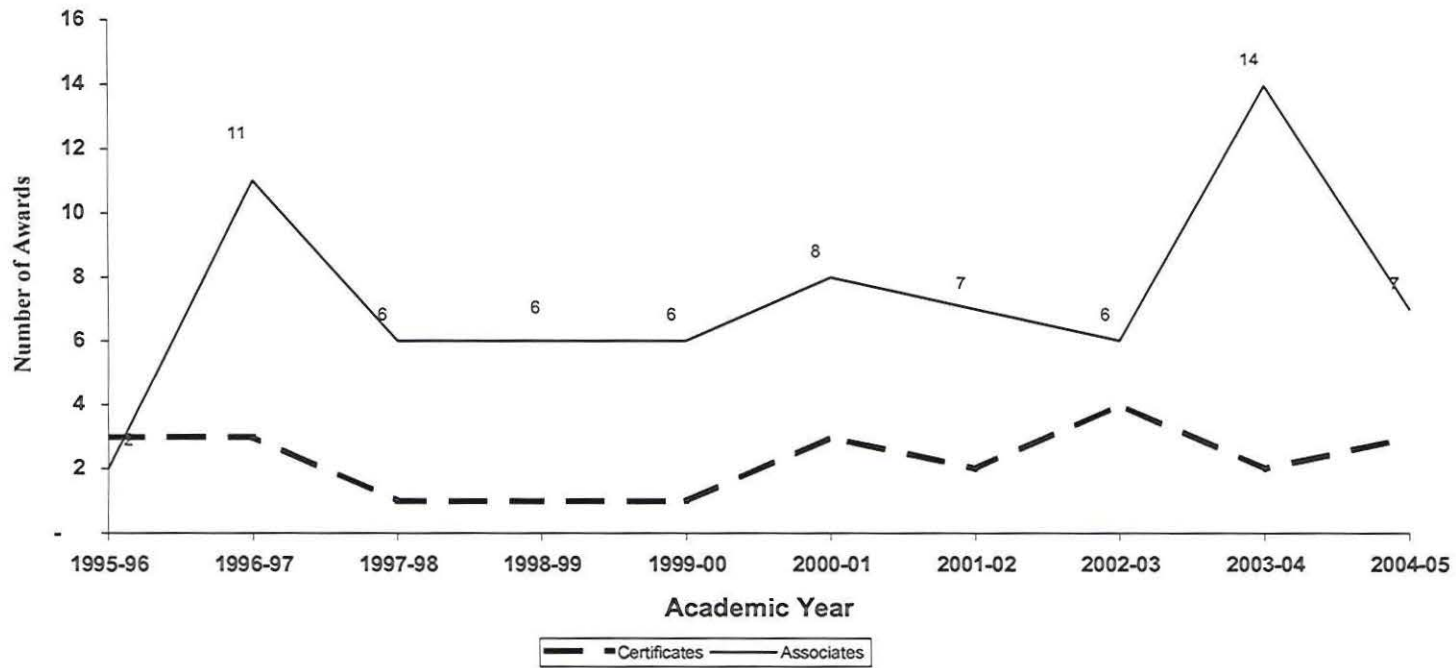
The Degree Trends Report is developed by the Office of Institutional Research based on data compiled from official college records which are submitted to the State of Michigan for the IPEDS (Integrated Post-Secondary Education System) Annual Degrees Conferred Report. The Degree Trends Report examines trends of OCC degrees, based on specific programs. The standard format offers information about certificates and associate degrees awarded. In the event that a given program offers only a certificate or an associate degree, information describing the other type of award will not be shown.

Trends over a specified period of time are illustrated by the following graphs for Library Technician (LTN)

- Ten-year trend showing the annual awards conferred in Library Technician
- Rate of change in annual awards conferred in Library Technician
- The three-year Moving Mean for annual awards conferred in Library Technician
- Ten-year trend in awards conferred collegewide.

Questions regarding this report can be forwarded to the Office of Institutional Research at (248) 341-2123.

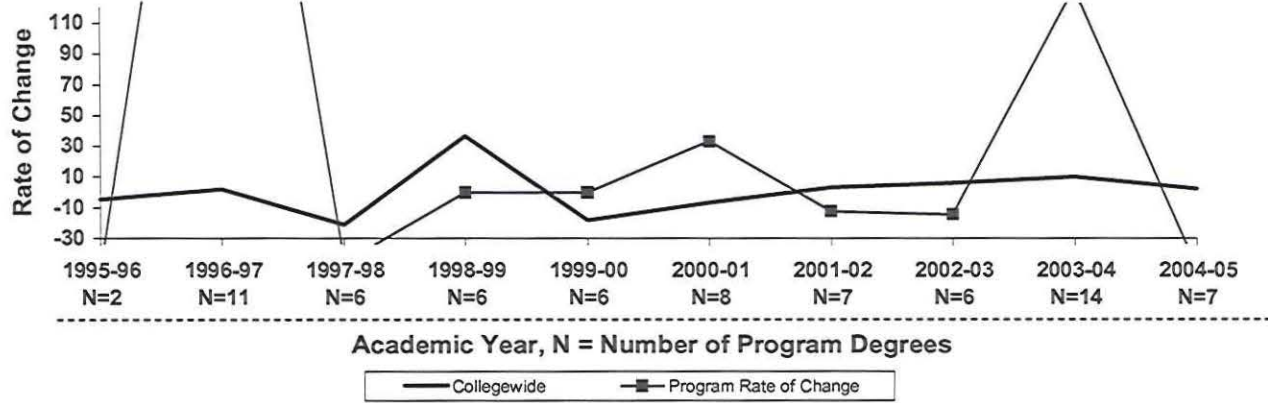
**Oakland Community College
Associate Degrees and Certificates Awarded
Library Technician
1995-96 through 2004-05**



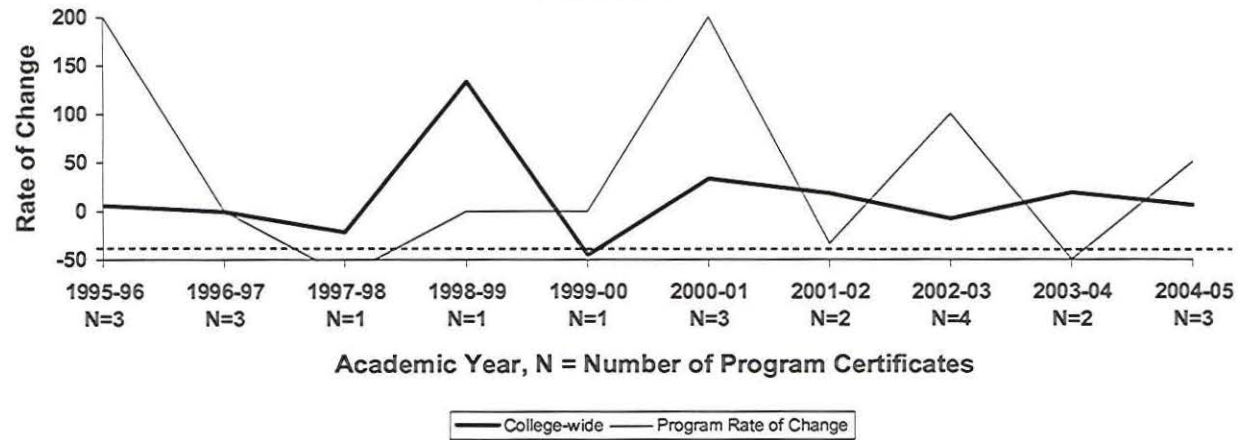
| <u>Academic Yr.</u> | <u>Certificates</u> | <u>Associates</u> |
|---------------------|---------------------|-------------------|
| 1995-96 | 3 | 2 |
| 1996-97 | 3 | 11 |
| 1997-98 | 1 | 6 |
| 1998-99 | 1 | 6 |
| 1999-00 | 1 | 6 |
| 2000-01 | 3 | 8 |
| 2001-02 | 2 | 7 |
| 2002-03 | 4 | 6 |
| 2003-04 | 2 | 14 |
| 2004-05 | 3 | 7 |

**Oakland Community College
Rate of Change in Annual Awards
College-Wide
1995-96 through 2004-05**

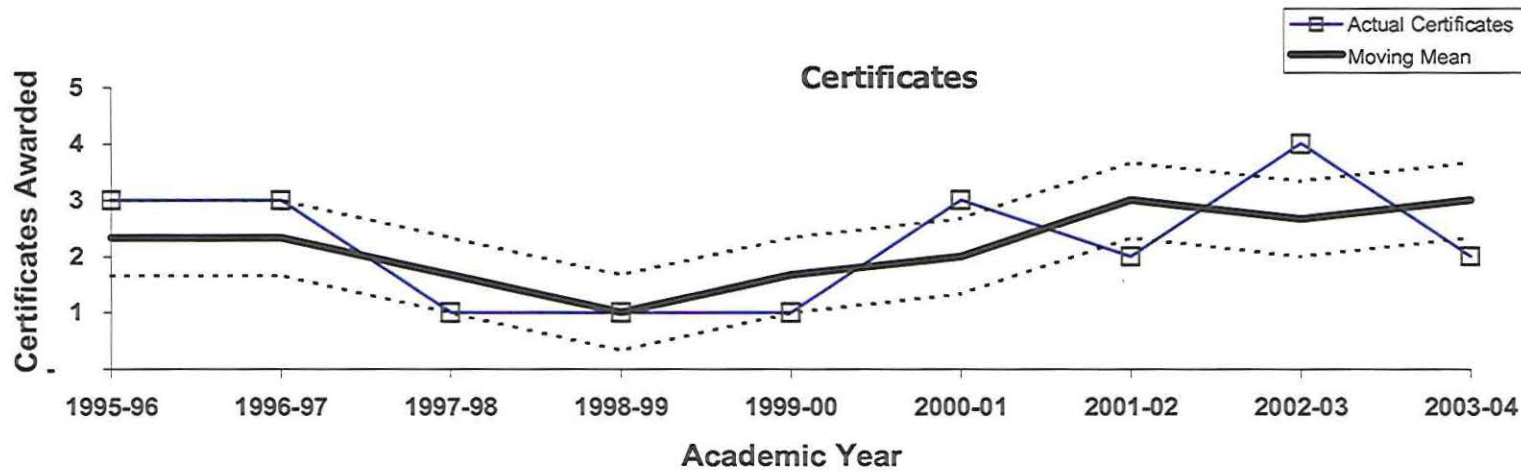
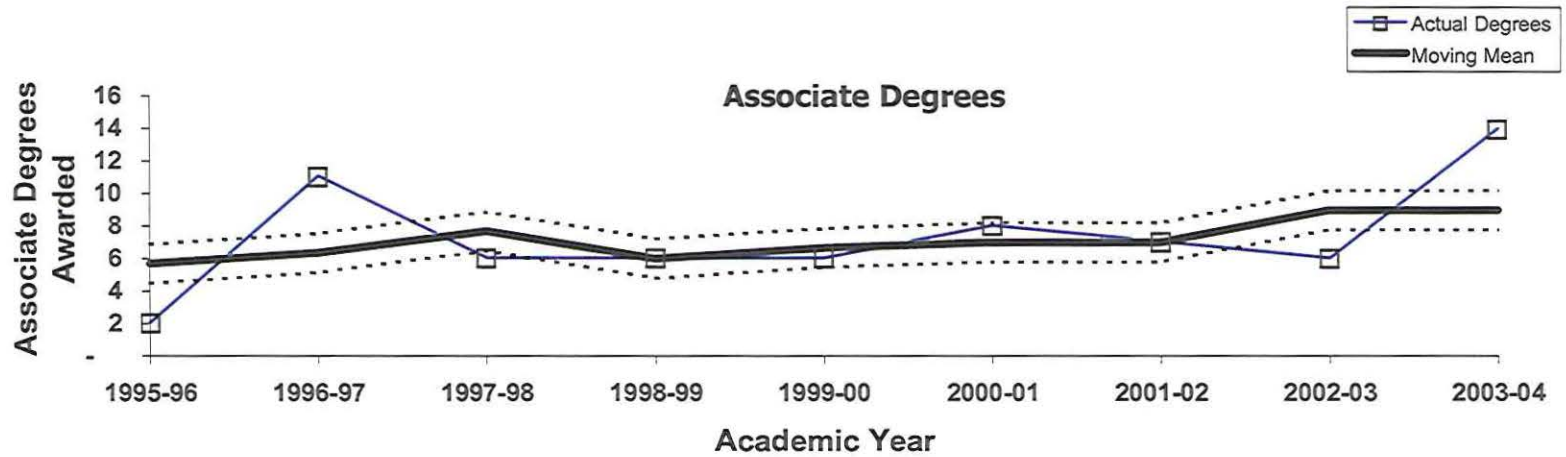
Associate Degrees



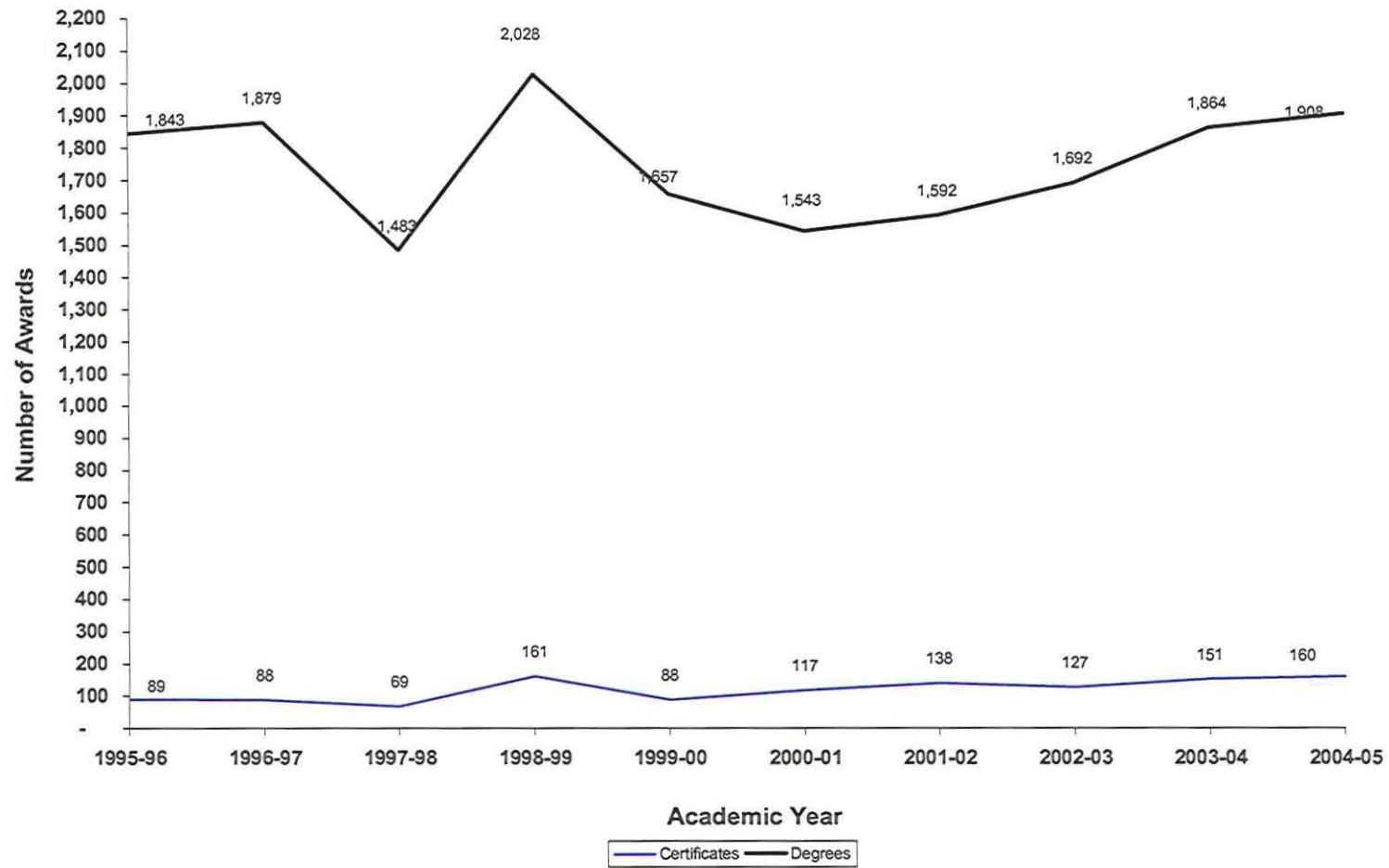
Certificates



**Oakland Community College
Three Year Moving Mean in Annual Awards
Library Technician
1995-96 through 2003-04**



**Oakland Community College
Associate Degrees and Certificates Awarded
College-Wide
1995-96 through 2004-05**





OAKLAND
COMMUNITY
COLLEGE

**Credit Hour Trends Report
Library Tech
LIB
2004-05**

**Prepared by:
Oakland Community College
Office of Institutional Research
January 19, 2006**

**Oakland Community College
Credit Hour Trends Report
Library Tech
1994-95 through 2004-05**

Each year the Office of Institutional Research prepares the Credit Hour Trends Report, based on data submitted to the State of Michigan in the annual ACS-6 (Activities Classification Structure) process. This report is based on each course section's official count date (1/10th Day). The Credit Hour Trends Report examines annual (July 1 - June 30) enrollment trends of OCC disciplines, based on course prefix codes.

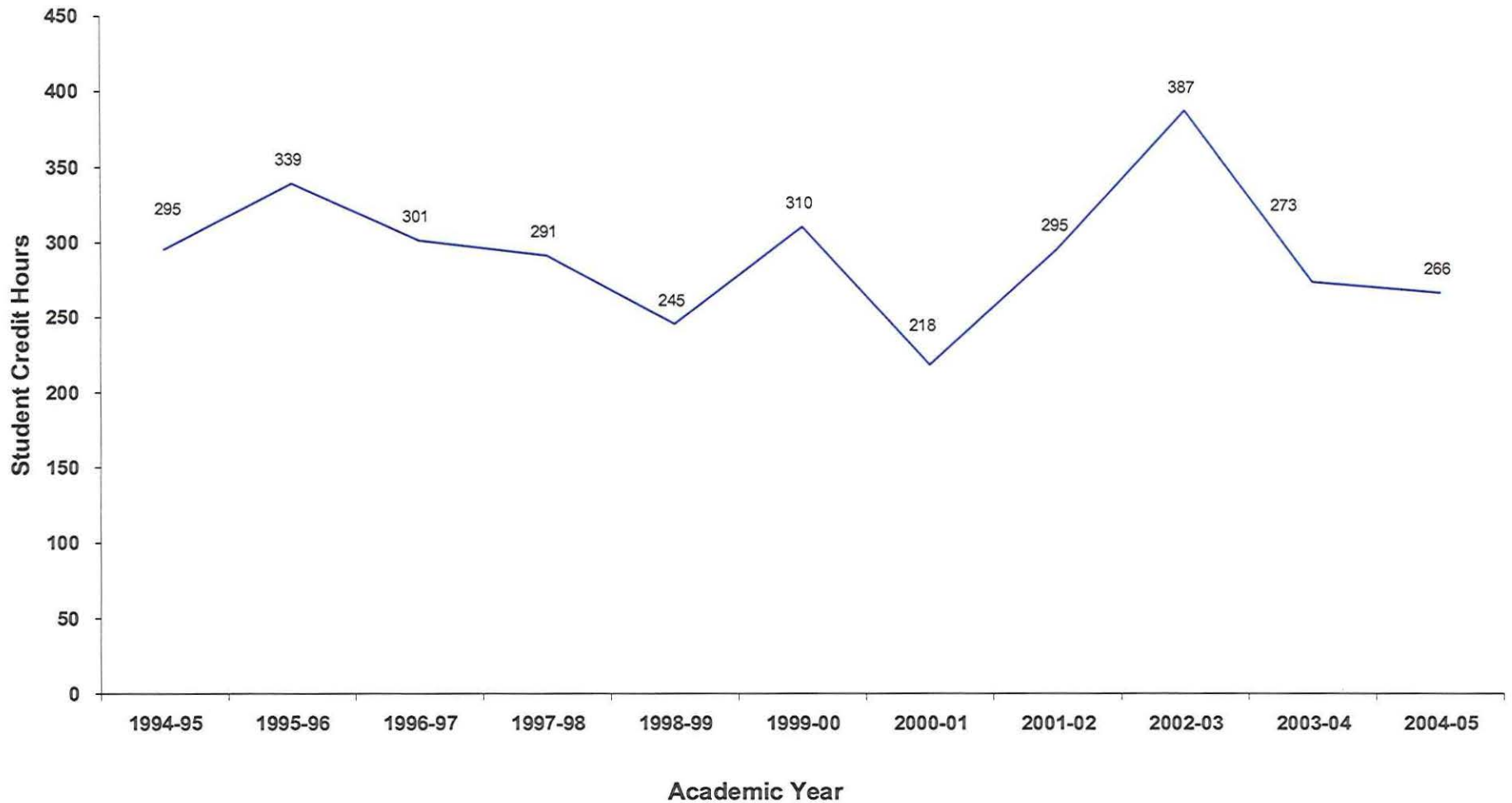
Trends over a specified period of time are illustrated by the following graphs for Library Tech.

- Graph depicting ten-year trend in student credit hours generated by Library Tech
- Graphs depicting three-year moving mean and rate of change in student credit hours for Library Tech.
- Ten-year trend in annual credit hours generated Collegewide.

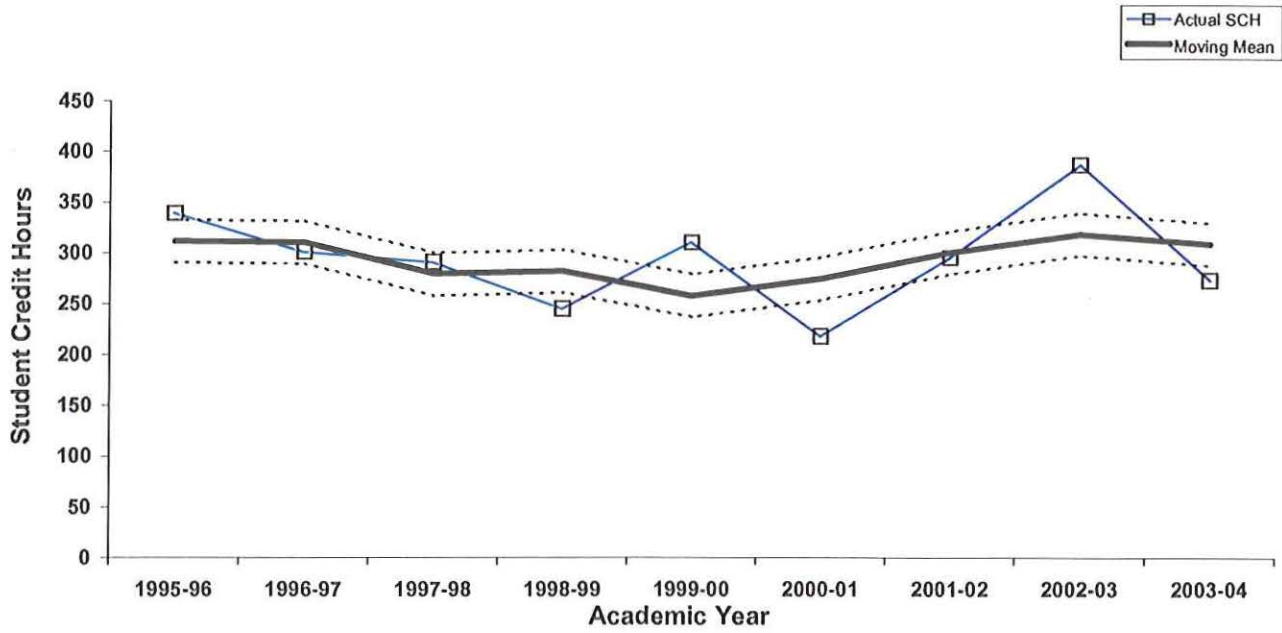
Questions regarding this report can be forwarded to the Office of Institutional Research at (248) 341-2123.

**Oakland Community College
Ten-Year Trend in Student Credit Hours
Library Tech
1994-95 through 2004-05**

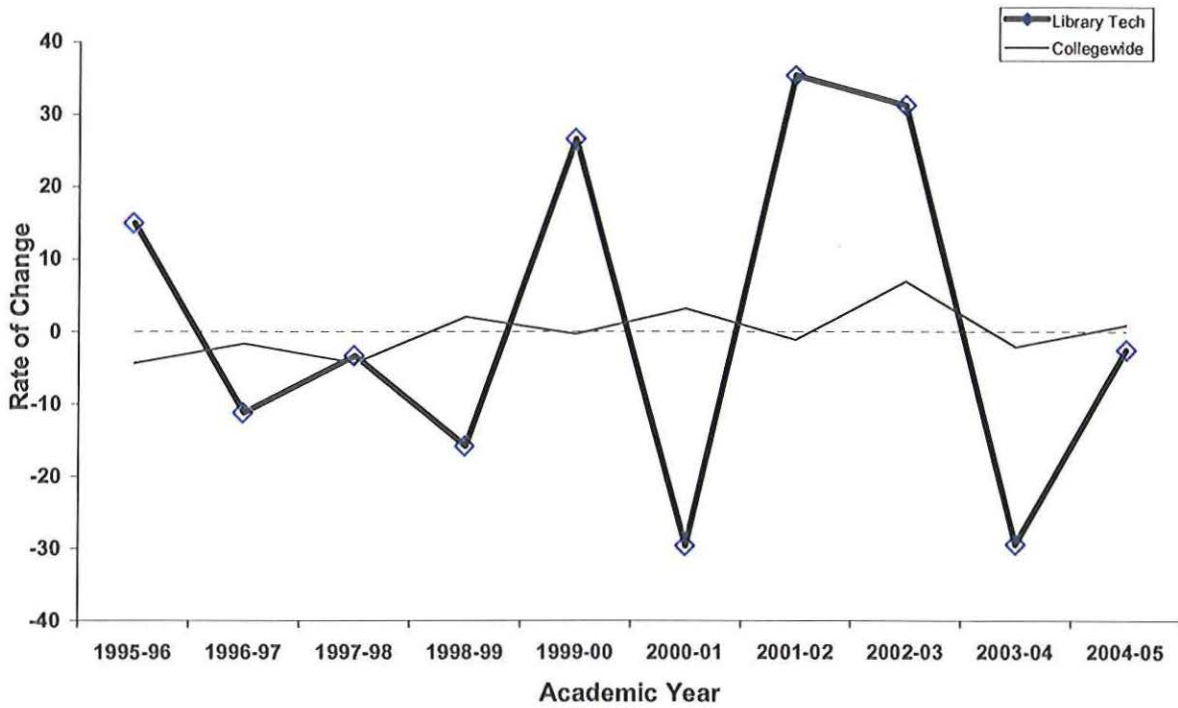
| | 1994-95 SCH | 1995-96 SCH | 1996-97 SCH | 1997-98 SCH | 1998-99 SCH | 1999-00 SCH | 2000-01 SCH | 2001-02 SCH | 2002-03 SCH | 2003-04 SCH | 2004-05 SCH | 5-Year % Change | 10-Year % Change |
|---------------------|----------------|----------------|----------------|----------------|----------------|----------------|----------------|----------------|----------------|----------------|----------------|--------------------|---------------------|
| Library Tech | 295 | 339 | 301 | 291 | 245 | 310 | 218 | 295 | 387 | 273 | 266 | -14.2 | -9.8 |
| College Wide Totals | 471,593 | 451,159 | 443,471 | 431,521 | 440,448 | 438,997 | 453,054 | 447,928 | 478,827 | 468,777 | 472,892 | 7.7 | 0.3 |



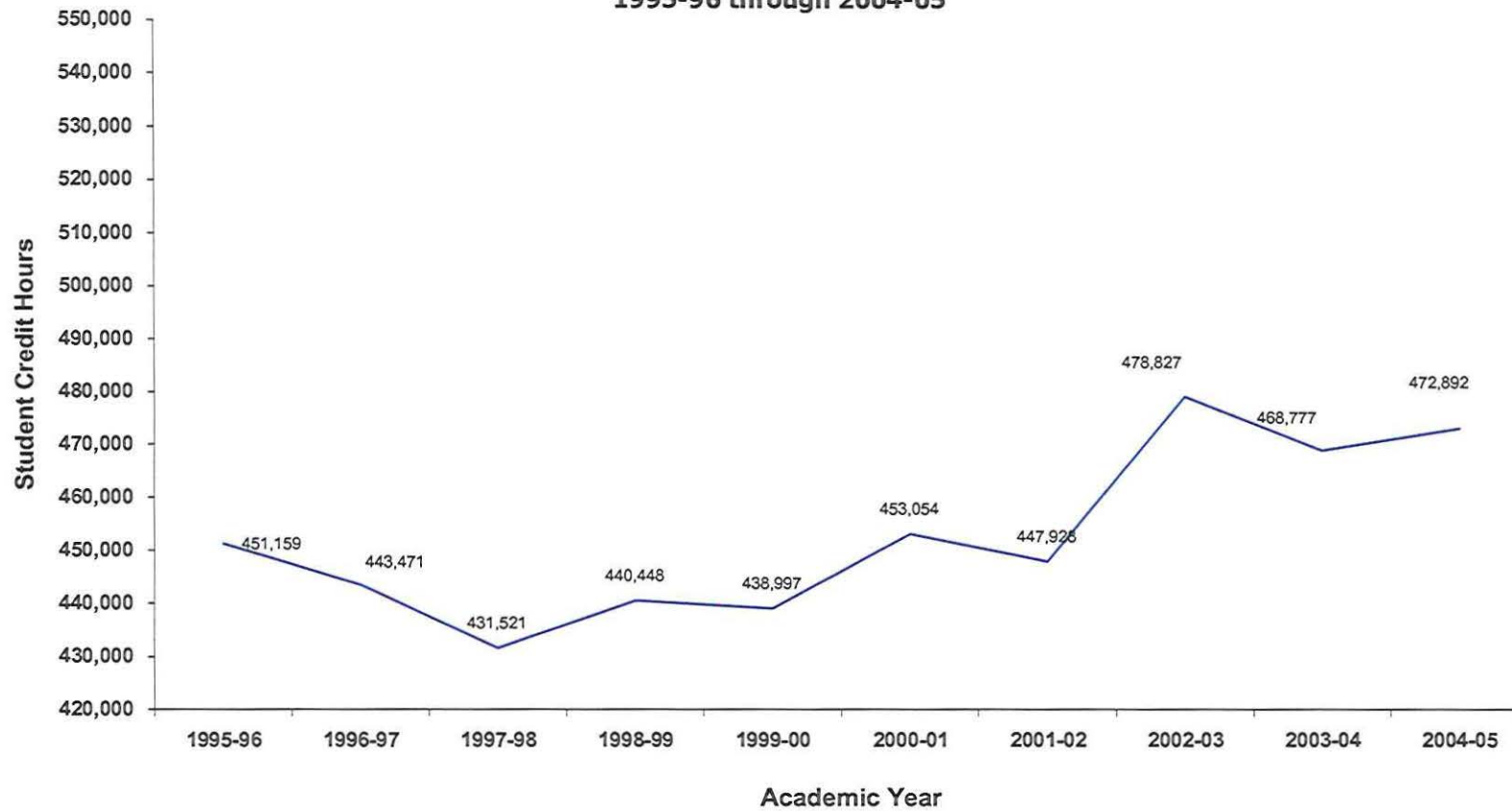
Oakland Community College
 Three-Year Moving Mean
 Library Tech
 1995-96 through 2003-04



Rate of Change in Student Credit Hours 1995-96 through 2004-05



**Oakland Community College
Ten-Year Trend in Student Credit Hours
College-Wide
1995-96 through 2004-05**



| | | | | | | | | | |
|---------|---------|---------|---------|---------|---------|---------|---------|---------|---------|
| 1995-96 | 1996-97 | 1997-98 | 1998-99 | 1999-00 | 2000-01 | 2001-02 | 2002-03 | 2003-04 | 2004-05 |
| 451,159 | 443,471 | 431,521 | 440,448 | 438,997 | 453,054 | 447,928 | 478,827 | 468,777 | 472,892 |