

Thurston, Kristy L

From: Thurston, Kristy L
Sent: Tuesday, November 16, 2004 4:17 PM
To: Oneill-nacy, Caroline E
Cc: Showers, Nancy C; Foster, Gail M
Subject: Curriculum Review

Hello!

As requested, we completed a Degree and Credit Hour Trends report for Health Care Administration. I will attach the report and I hope that it will be beneficial for the Curriculum Review meeting. Please let me know if you have any questions.

Thank you!



HEA_HCA Health
Care Administra...

*Kristy Thurston
Oakland Community College
Institutional Research
Phone (248) 232-4866*



Degree and Credit Hour Trends Report Worksheet

Requestor: Curriculum Review Committee	Curriculum to be Reviewed: Health Care Administration	Due: 11/5/04
Coordinator: Caroline O'Neill-Nacy		

Report to consist of the following:				
<i>Degree Prefixes:</i>	HEA	HCA.AAS		
<i>Course Codes:</i>	HCA			

Bookmarks:		
<i>Intro Section:</i>	<i>Program Title</i> Report for CRC	100%
	<i>Program Prefix</i> Table of Contents	100%
<i>Degree Trends Section:</i>	<i>Program Title</i> Degree Trends Report	100%
	<i>Program Prefix</i> Degree Trends Summary	100%
	<i>Program Prefix</i> Ten-Year Trend	100%
	<i>Program Prefix</i> Rate of Change	100%
	<i>Program Prefix</i> Three-Year Moving Mean	100%
	College-Wide Ten-Year Trend	100%
<i>Credit Hour Trends Section:</i>	<i>Course Title</i> Credit Hour Trends Report	100%
	<i>Course Code</i> Credit Hour Trends Summary	100%
	<i>Course Code</i> Ten-Year Trend	100%
	<i>Course Code</i> Three-Year Moving Mean	158%
	<i>Course Code</i> Rate of Change	158%
	College-Wide Ten-Year Trend	100%

Institutional Research Report

**Health Care Administration
Degree and Credit Hour Trends Reports
for
Curriculum Review Committee**



**OAKLAND
COMMUNITY
COLLEGE**

TABLE OF CONTENTS

Health Care Administration Degree Trends Report

HEA/HCA Degree Trends Summary

HEA/HCA Ten-Year Trend

HEA/HCA Rate of Change

HEA/HCA Three-Year Moving Mean

College-Wide Ten-Year Trend

Health Care Administration Credit Hour Trends Report

HCA Credit Hour Trends Summary

HCA Ten-Year Trend

HCA Three-Year Moving Mean

HCA Rate of Change

College-Wide Ten-Year Trend



OAKLAND
COMMUNITY
COLLEGE

Degree Trends Report
Health Care Administration
HEA
2002-03

Prepared by:
Oakland Community College
Office of Institutional Research
October 13, 2004

**Oakland Community College
Degree Trends Report
Health Care Administration (HEA)
1993-94 through 2002-03**

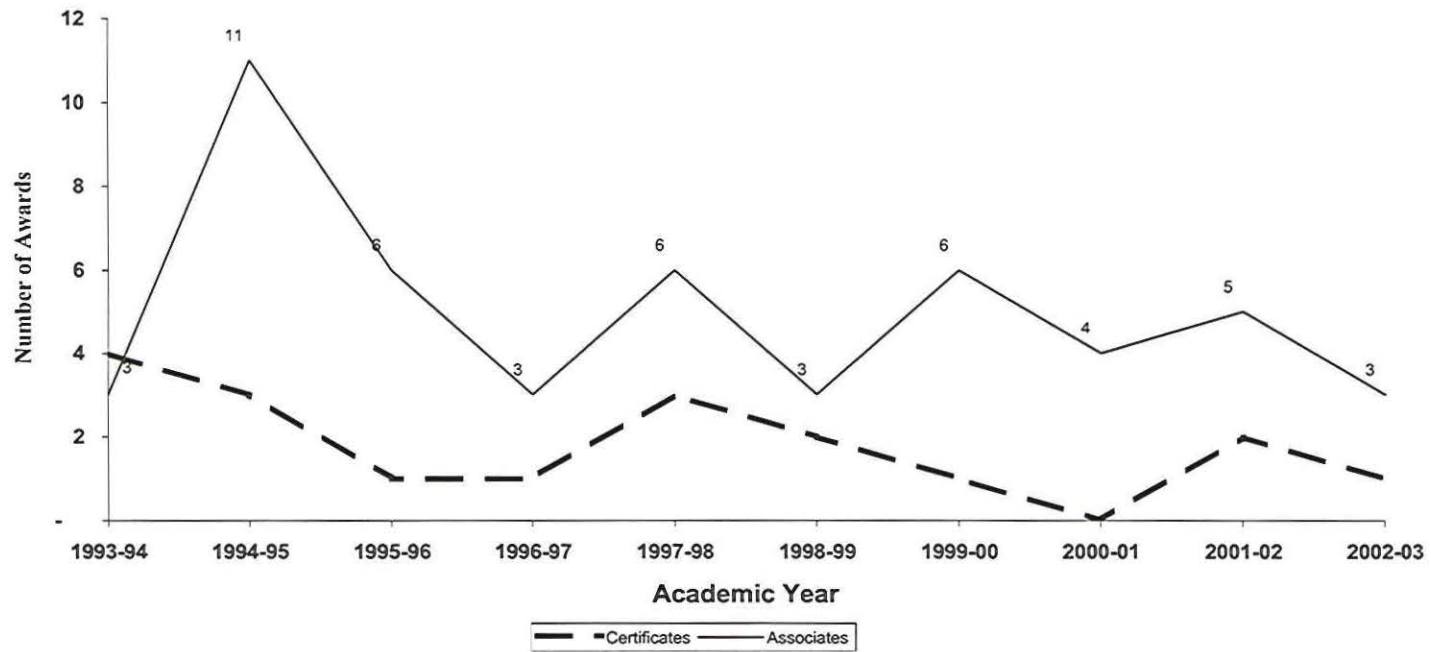
The Degree Trends Report is developed by the Office of Institutional Research based on data compiled from official college records which are submitted to the State of Michigan for the IPEDS (Integrated Post-Secondary Education System) Annual Degrees Conferred Report. The Degree Trends Report examines trends of OCC degrees, based on specific programs. The standard format offers information about certificates and associate degrees awarded. In the event that a given program offers only a certificate or an associate degree, information describing the other type of award will not be shown.

Trends over a specified period of time are illustrated by the following graphs for Health Care Administration (HEA)

- Ten-year trend showing the annual awards conferred in Health Care Administration
- Rate of change in annual awards conferred in Health Care Administration
- The three-year Moving Mean for annual awards conferred in Health Care Administration
- Ten-year trend in awards conferred collegewide.

Questions regarding this report can be forwarded to the Office of Institutional Research at (248) 341-2123.

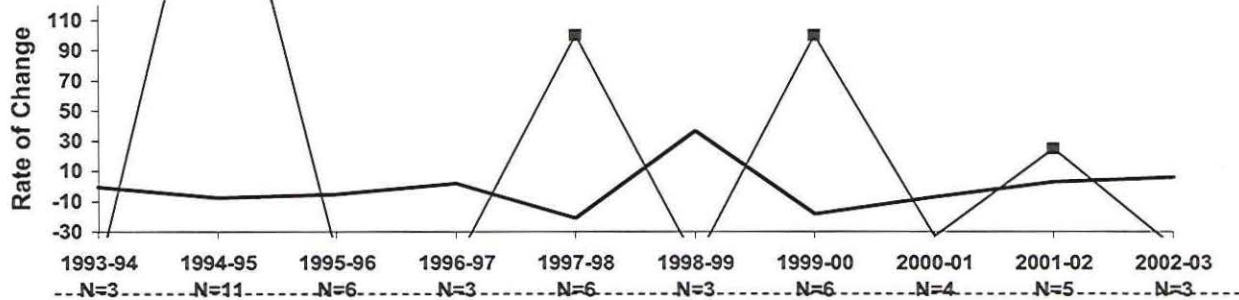
**Oakland Community College
Associate Degrees and Certificates Awarded
Health Care Administration
1993-94 through 2002-03**



<u>Academic Yr.</u>	<u>Certificates</u>	<u>Associates</u>
1993-94	4	3
1994-95	3	11
1995-96	1	6
1996-97	1	3
1997-98	3	6
1998-99	2	3
1999-00	1	6
2000-01	0	4
2001-02	2	5
2002-03	1	3

**Oakland Community College
Rate of Change in Annual Awards
College-Wide
1993-94 through 2002-03**

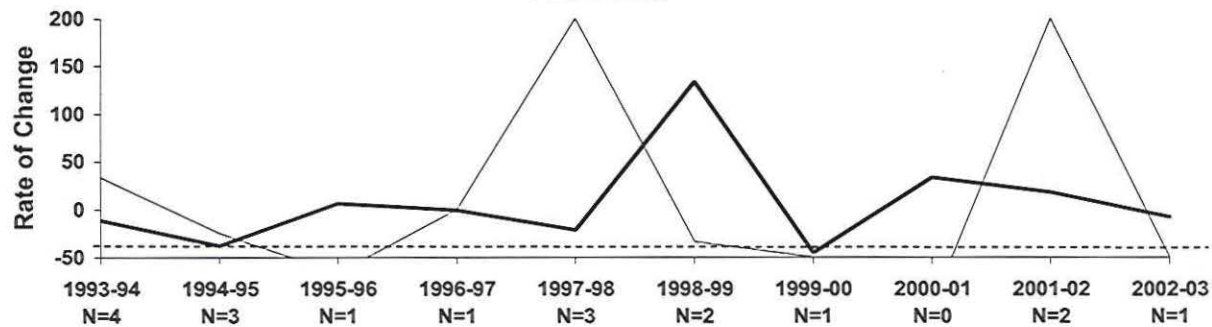
Associate Degrees



Academic Year, N = Number of Program Degrees

— Collegewide —■— Program Rate of Change

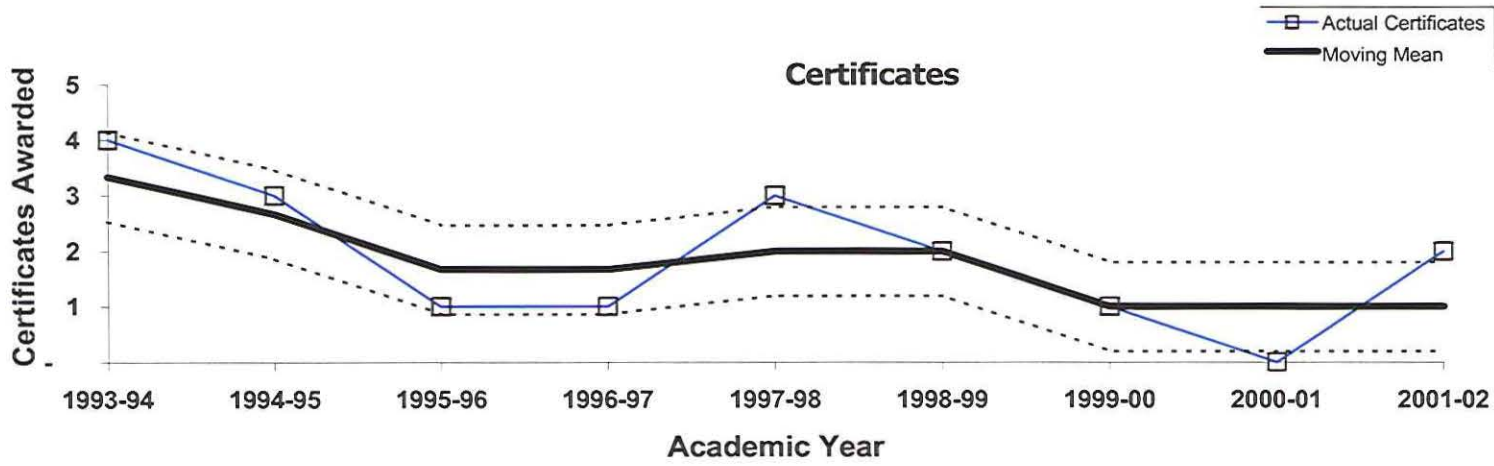
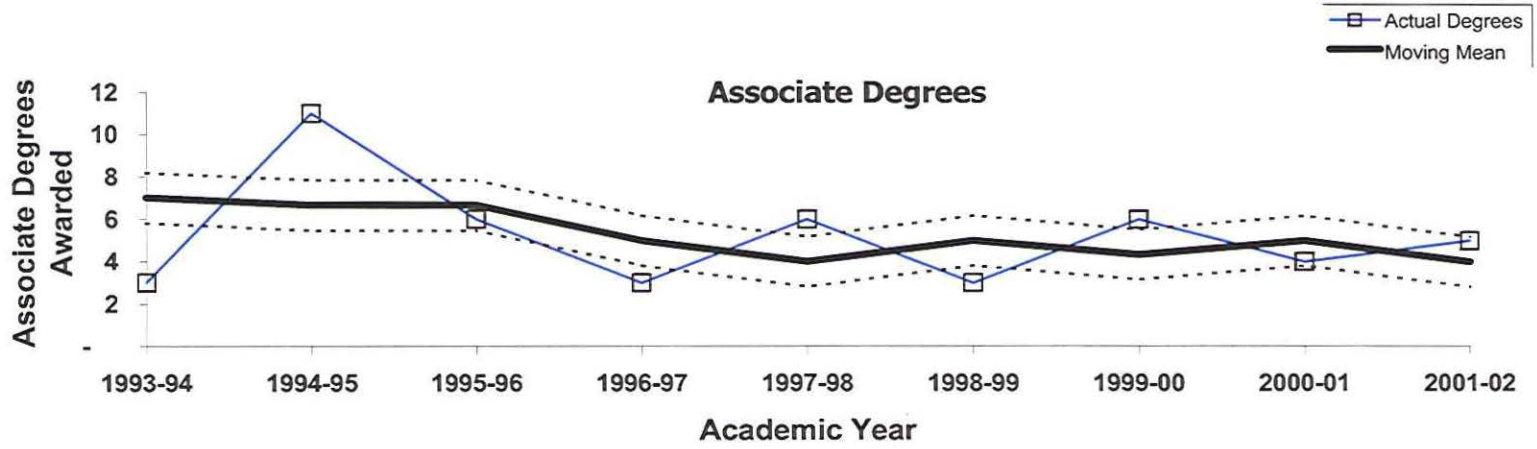
Certificates



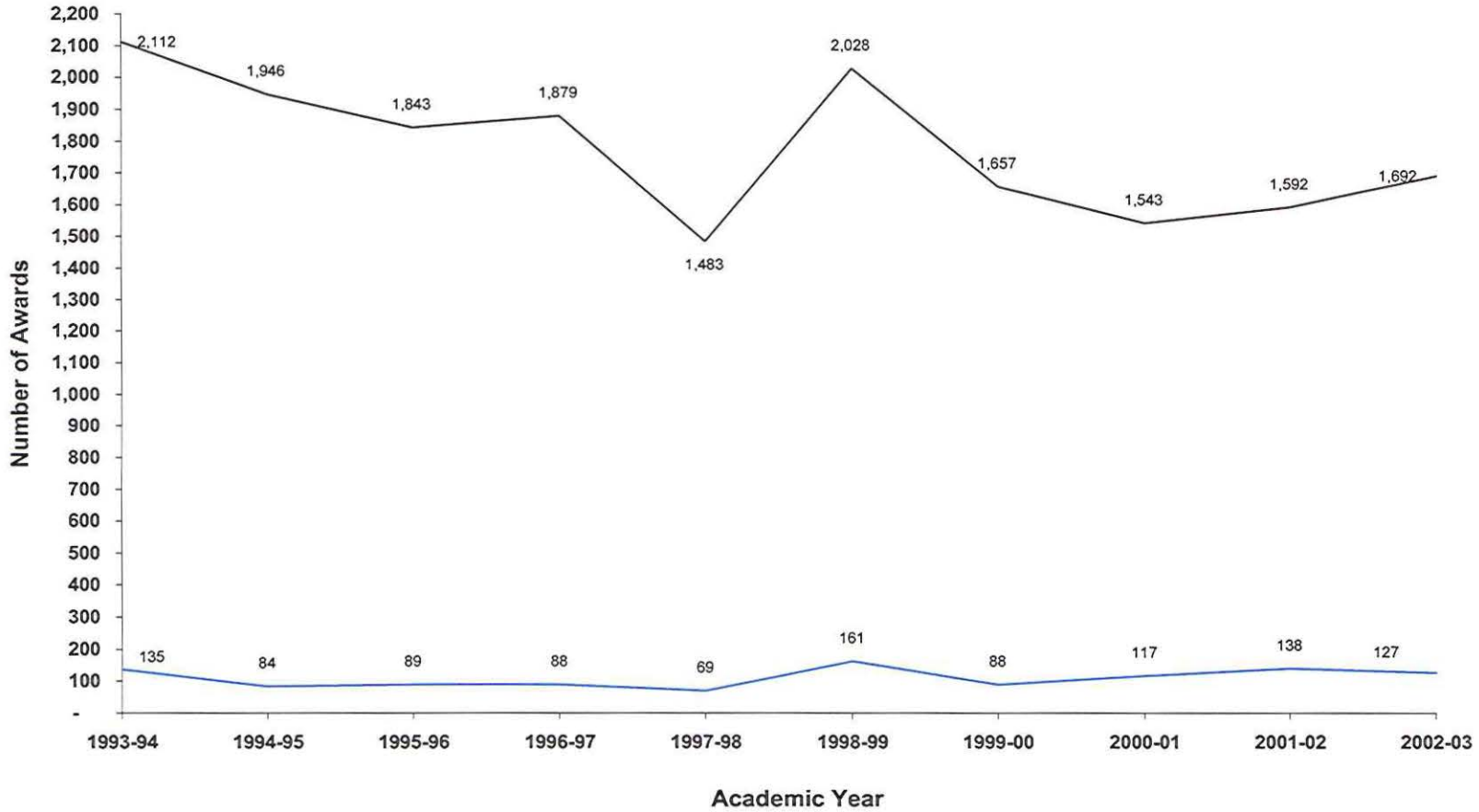
Academic Year, N = Number of Program Certificates

— College-wide —■— Program Rate of Change

**Oakland Community College
Three Year Moving Mean in Annual Awards
Health Care Administration
1993-94 through 2001-02**



**Oakland Community College
Associate Degrees and Certificates Awarded
College-Wide
1993-94 through 2002-03**





OAKLAND
COMMUNITY
COLLEGE

**Credit Hour Trends Report
Health Care Admin.
HCA
2002-03**

**Prepared by:
Oakland Community College
Office of Institutional Research
October 13, 2004**

**Oakland Community College
Credit Hour Trends Report
Health Care Admin.
1993-94 through 2002-03**

Each year the Office of Institutional Research prepares the Credit Hour Trends Report, based on data submitted to the State of Michigan in the annual ACS-6 (Activities Classification Structure) process. This report is based on each course section's official count date (1/10th Day). The Credit Hour Trends Report examines annual (July 1 - June 30) enrollment trends of OCC disciplines, based on course prefix codes.

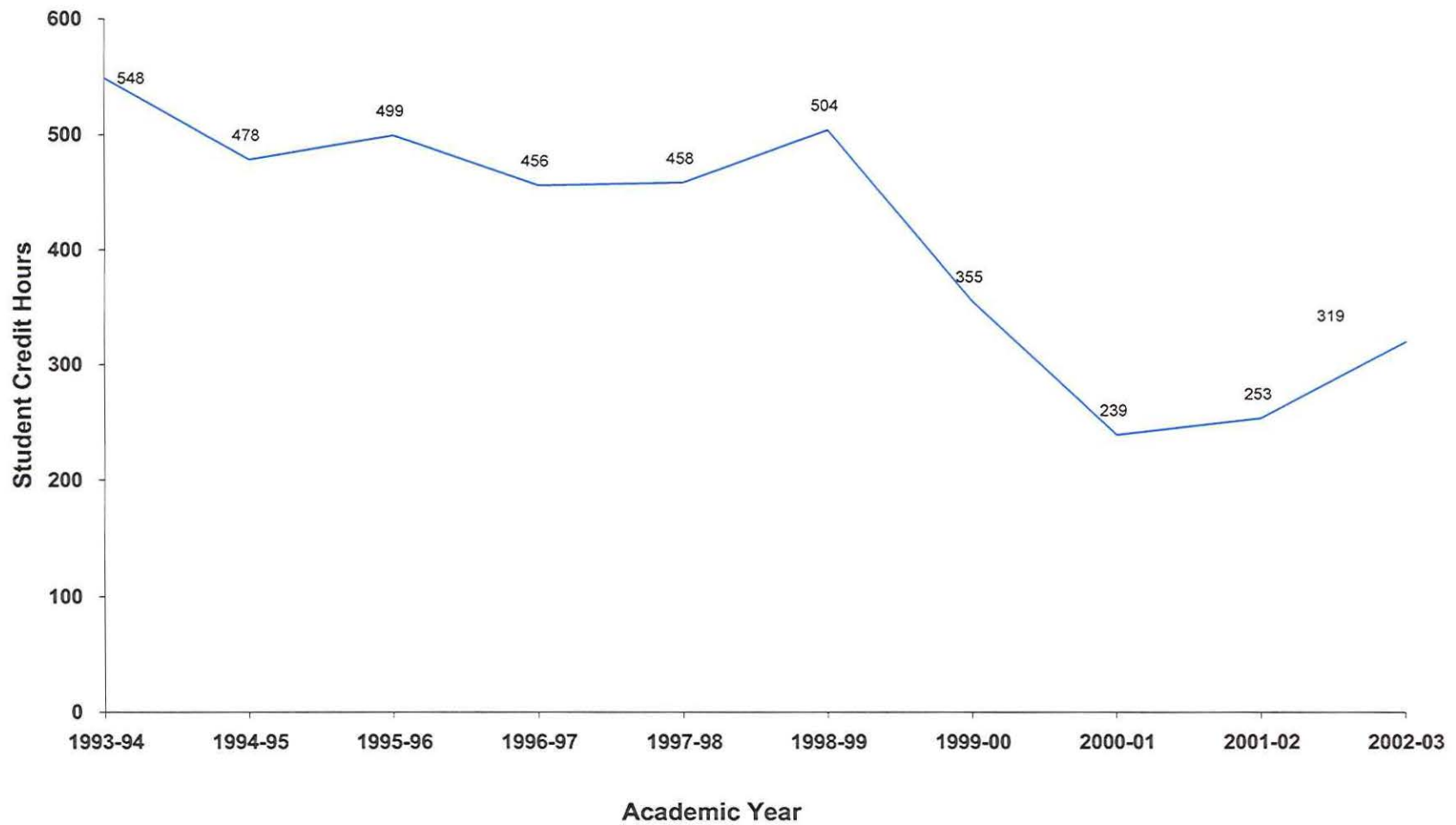
Trends over a specified period of time are illustrated by the following graphs for Health Care Admin..

- Graph depicting ten-year trend in student credit hours generated by Health Care Admin.
- Graphs depicting three-year moving mean and rate of change in student credit hours for Health Care Admin..
- Ten-year trend in annual credit hours generated Collegewide.

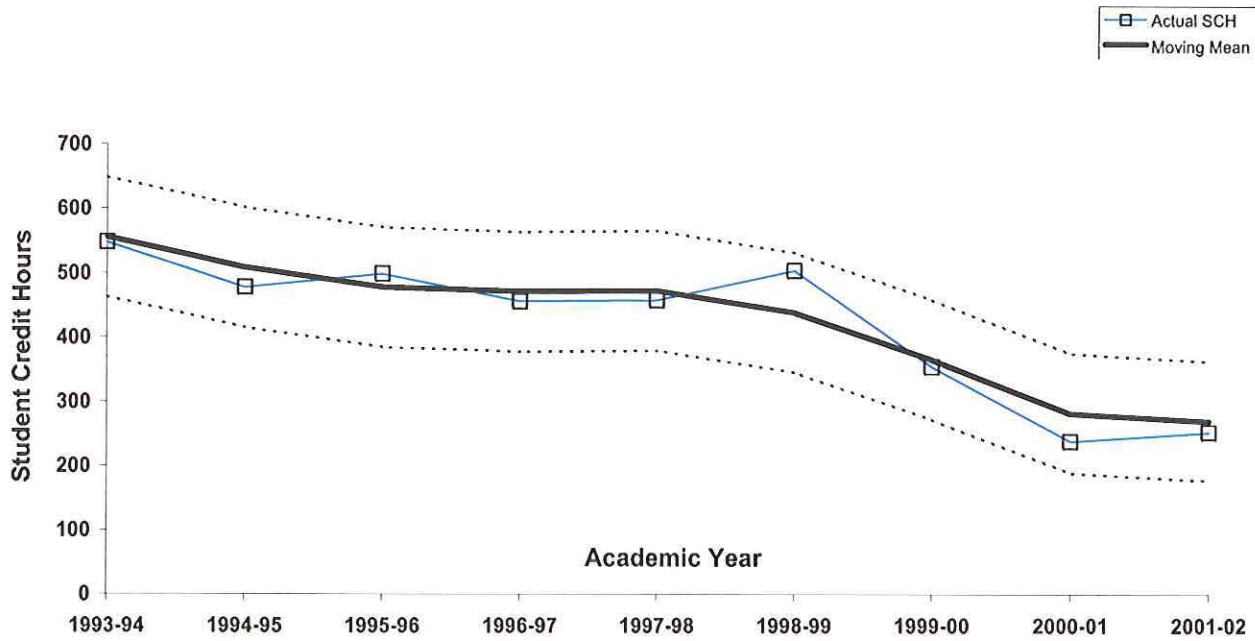
Questions regarding this report can be forwarded to the Office of Institutional Research at (248) 341-2123.

**Oakland Community College
Ten-Year Trend in Student Credit Hours
Health Care Admin.
1993-94 through 2002-03**

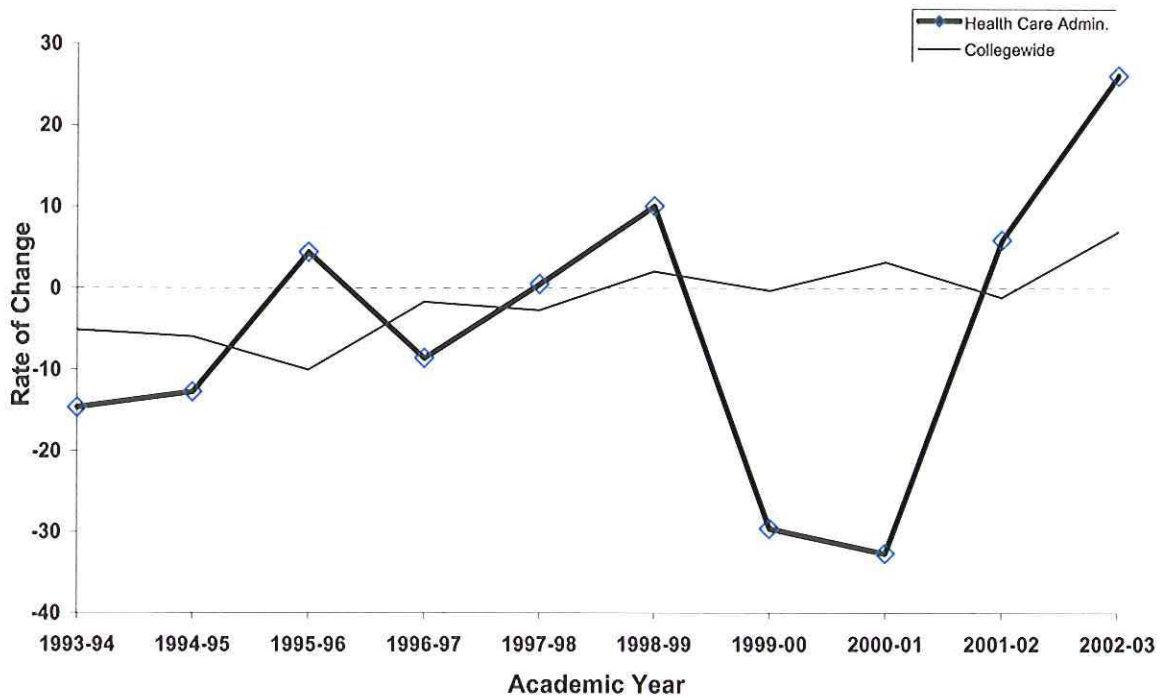
	1993-94 SCH	1994-95 SCH	1995-96 SCH	1996-97 SCH	1997-98 SCH	1998-99 SCH	1999-00 SCH	2000-01 SCH	2001-02 SCH	2002-03 SCH	5-Year % Change	10-Year % Change
Health Care Admin.	548	478	499	456	458	504	355	239	253	319	-36.7	-41.8
College Wide Totals	501,553	471,593	451,159	443,471	431,521	440,448	438,997	453,054	447,928	478,827	8.7	-4.5



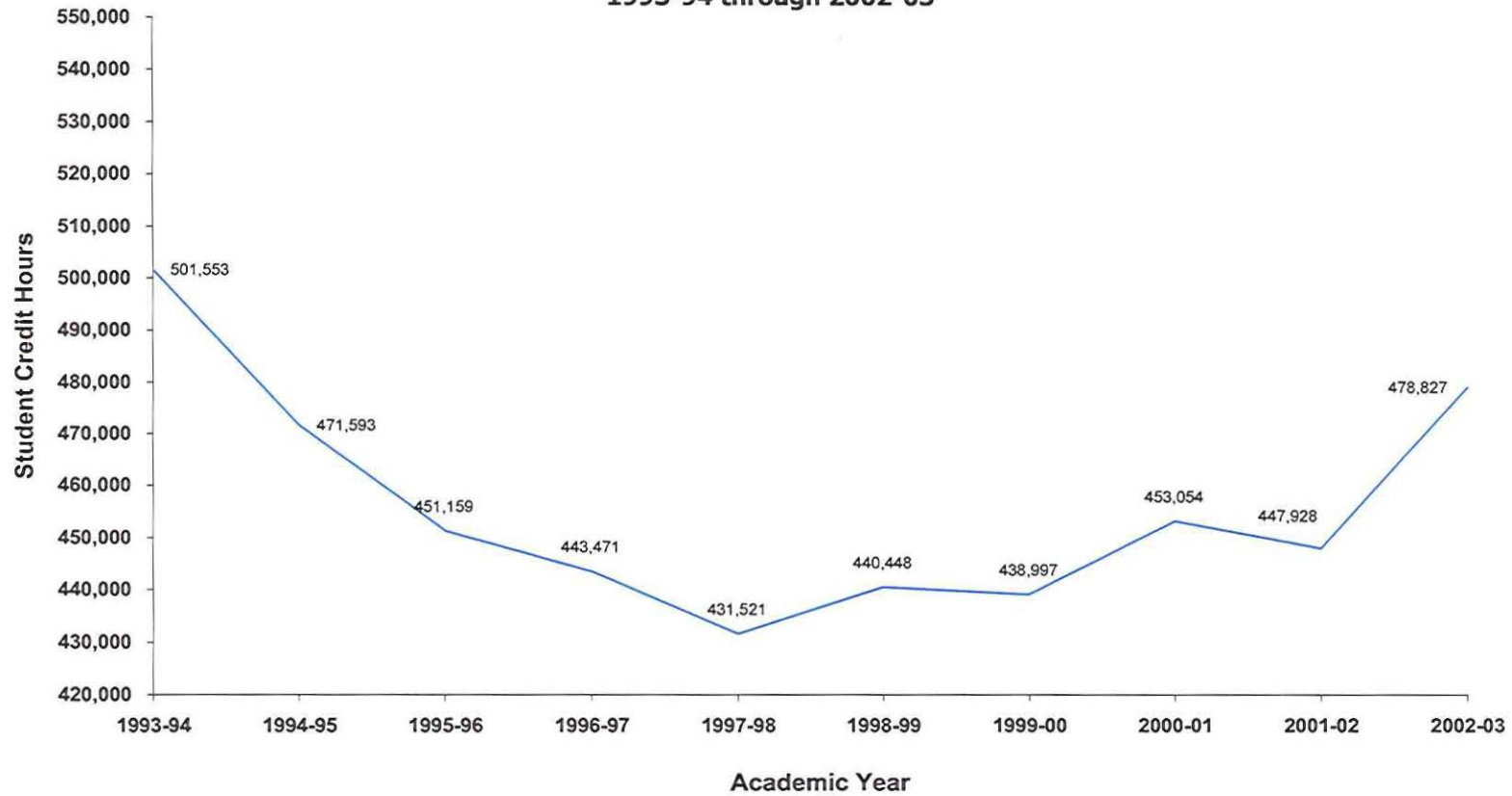
Oakland Community College
 Three-Year Moving Mean
 Health Care Admin.
 1993-94 through 2001-02



Rate of Change in Student Credit Hours 1993-94 through 2002-03



**Oakland Community College
Ten-Year Trend in Student Credit Hours
College-Wide
1993-94 through 2002-03**



1993-94	1994-95	1995-96	1996-97	1997-98	1998-99	1999-00	2000-01	2001-02	2002-03
501,553	471,593	451,159	443,471	431,521	440,448	438,997	453,054	447,928	478,827