

1998-99
Credit Hour Trends Report
Bus Info Sys

Prepared by:
Oakland Community College
Office of Institutional Research
November 1999

Oakland Community College
Credit Hour Trends Report
Bus Info Sys (BIS)
1989-90 through 1998-99

Each year the Office of Institutional Research prepares the Credit Hour Trends report, based on data submitted to the Michigan Department of Education in the ACS-6 report (Activities Classification Structure). This report is based on each course section's official count date (1/10th Day). The Credit Hour Trends report examines annual (July 1 - June 30) enrollment trends of OCC disciplines, based on course prefix codes and curriculum clusters.

In an attempt to show trends over time, this report includes the following graphs for Bus Info Sys (BIS):

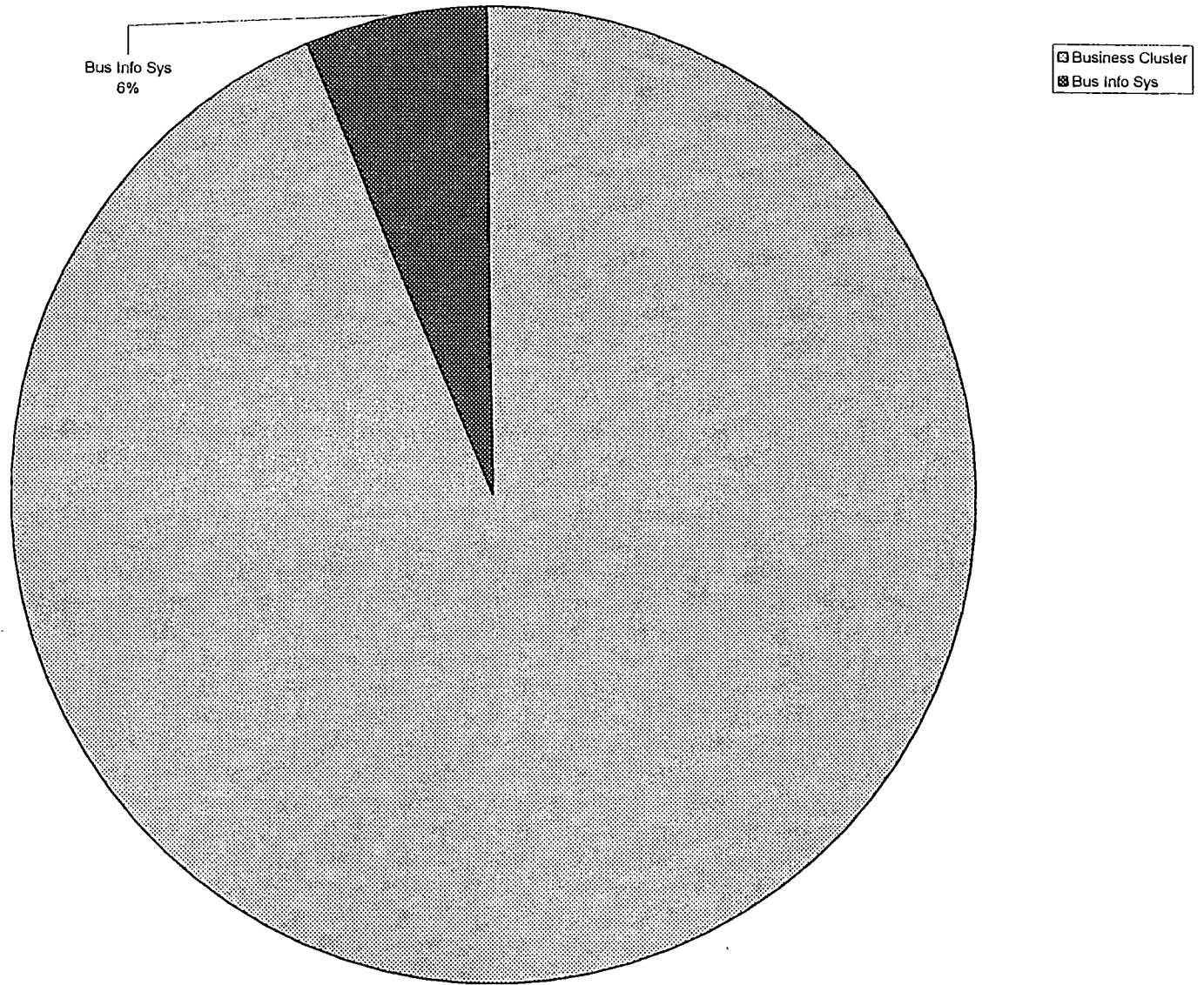
- ◆ A pie chart showing Bus Info Sys as a percentage of the Business cluster.
- ◆ A ten year trend line showing the annual credit hours generated by Bus Info Sys.
- ◆ Graphs showing the rate of change in annual credit hours generated by Bus Info Sys compared to the college-wide rate of change.
- ◆ The three year moving mean for annual credit hours generated by Bus Info Sys.
- ◆ A ten year trend line showing the total annual credit hours generated by the Business cluster.
- ◆ The final trend line shows the ten year trend in annual credit hours generated college-wide.

If you have any questions regarding this report, please contact the Office of Institutional Research at (248)471-7746.

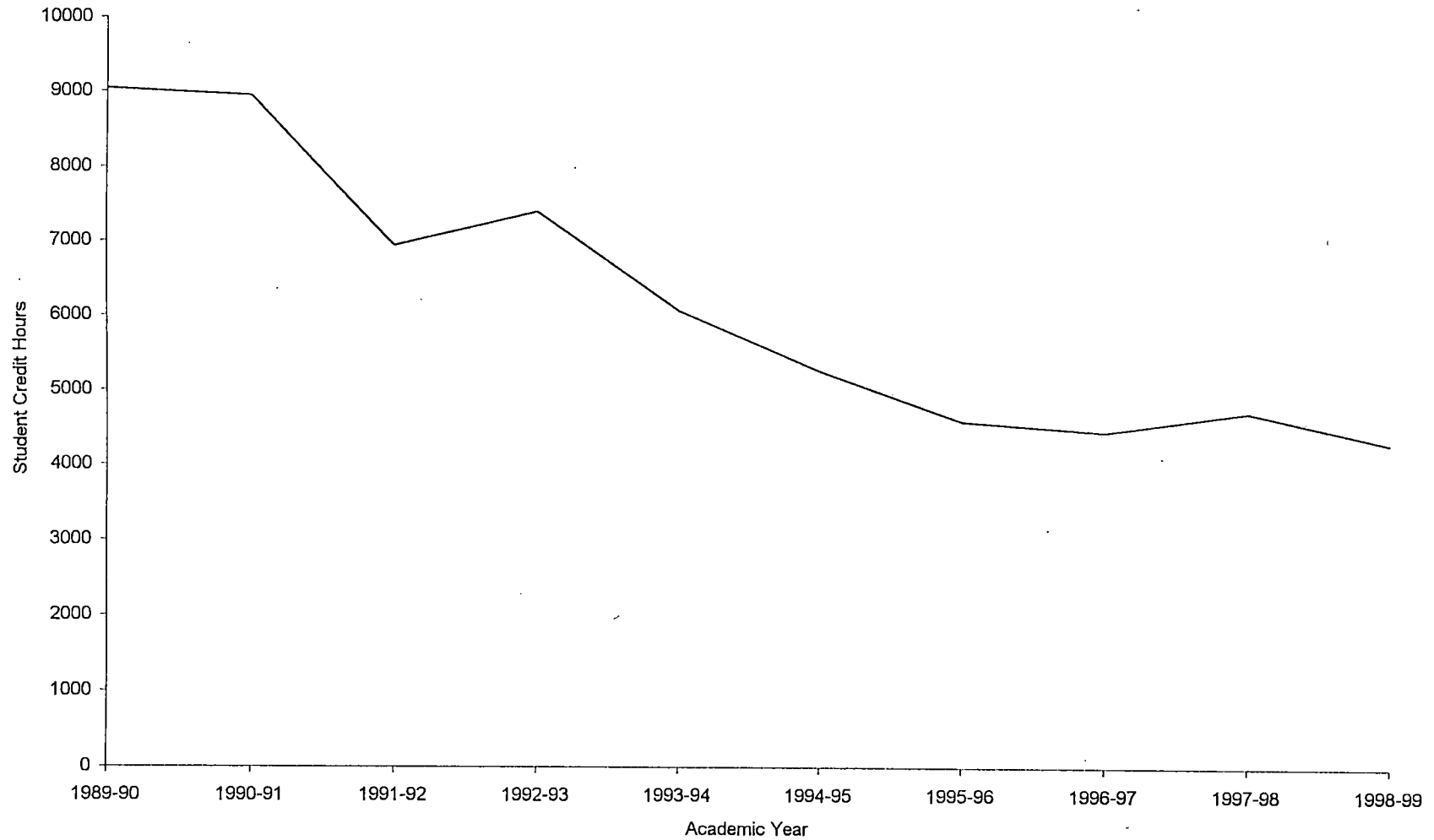
Oakland Community College
Ten Year Trend in Student Credit Hours
1989-90 through 1998-99

	1989-90 SCH	1990-91 SCH	1991-92 SCH	1992-93 SCH	1993-94 SCH	1994-95 SCH	1995-96 SCH	1996-97 SCH	1997-98 SCH	1998-99 SCH	5-Year % Change	10-Year % Change
Bus Info Sys	9,042	8,952	6,942	7,404	6,074	5,271	4,602	4,464	4,730	4,312	-18.2	-52.3
Business (Cluster)	83,669	83,836	86,387	81,808	75,194	68,563	67,922	68,193	72,273	71,751	4.6	-14.2
College Wide Totals	493,815	508,276	532,100	528,686	501,553	471,593	451,159	443,471	431,521	440,448	-6.6	-10.8

Oakland Community College
Bus Info Sys as a Percentage of Business Cluster
1998-99

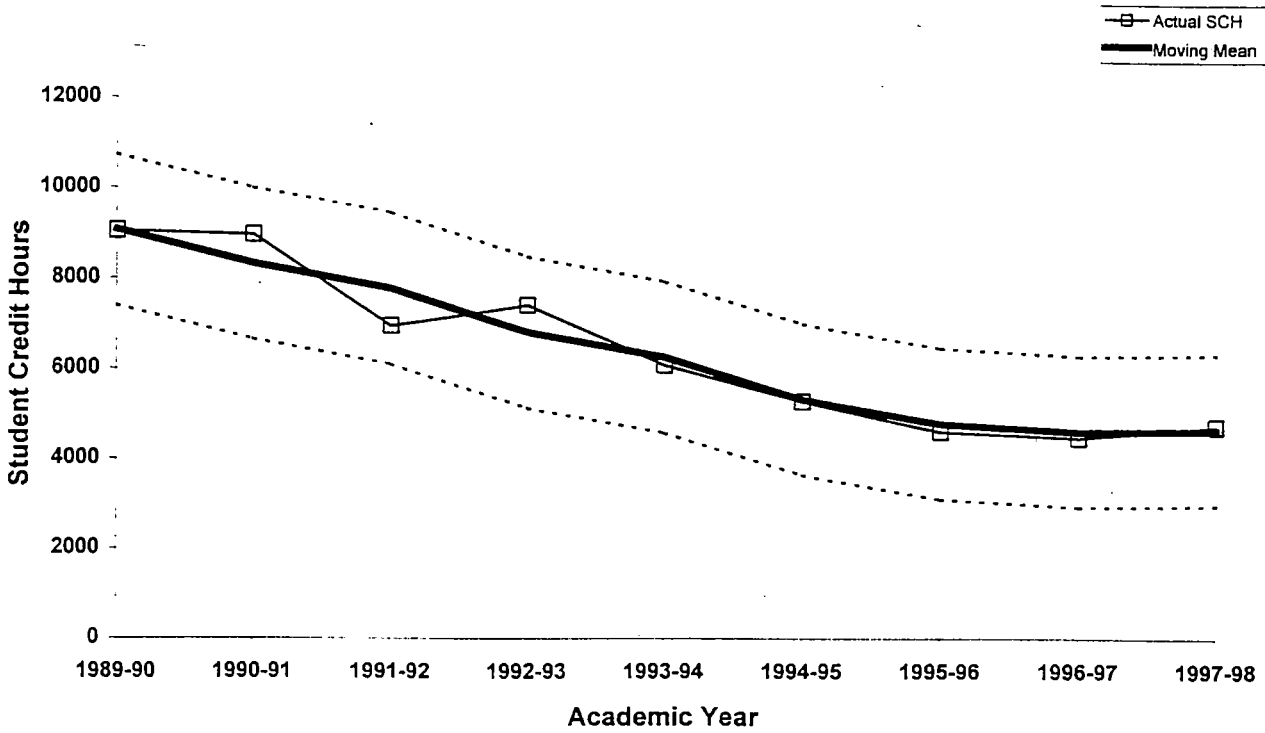


Oakland Community College
Ten Year Trend in Student Credit Hours
Discipline: Bus Info Sys
1989-90 through 1998-99

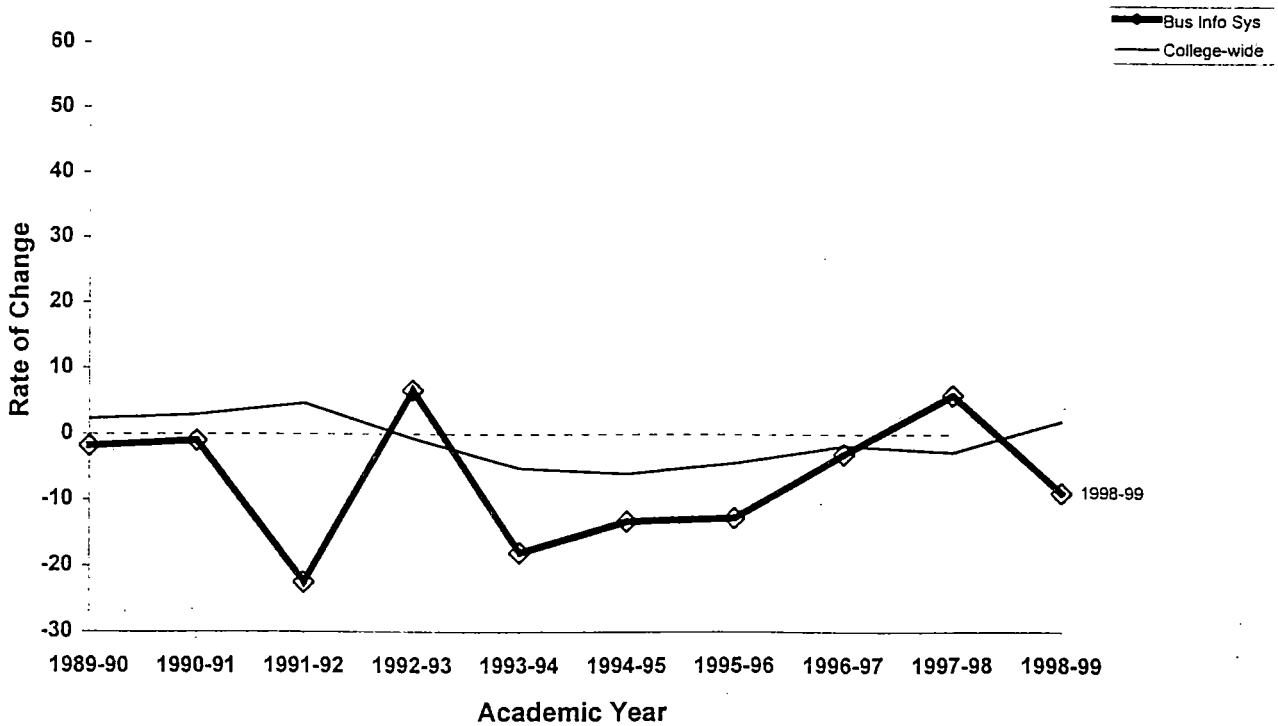


Oakland Community College
 Discipline: Bus Info Sys
 1989-90 through 1997-98

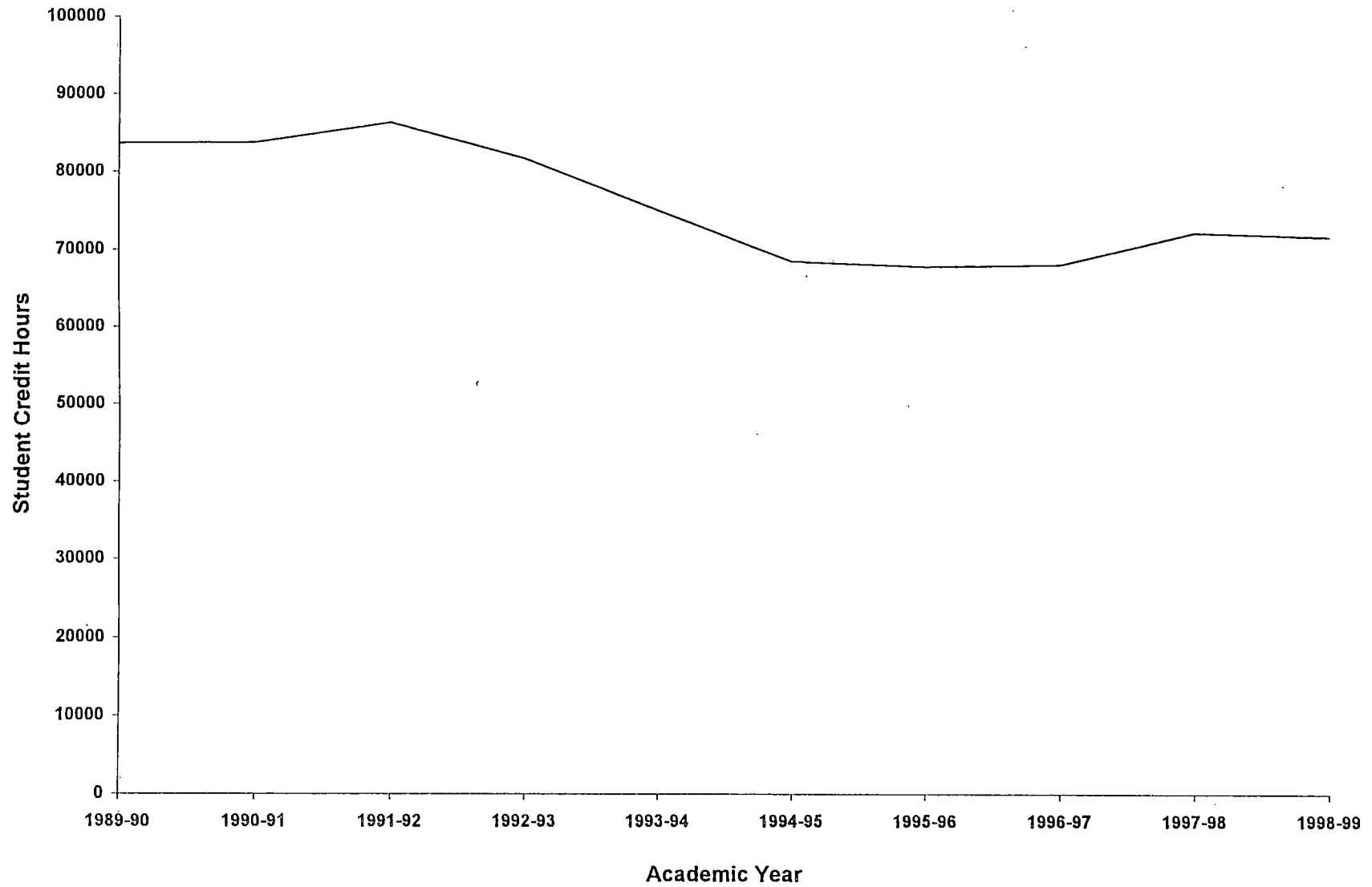
3-Year Moving Mean



Rate of Change in Student Credit Hours



Oakland Community College
Ten Year Trend in Student Credit Hours
Cluster: Business
1989-90 through 1998-99



Oakland Community College
Ten Year Trend in Student Credit Hours
College-wide Totals
1989-90 through 1998-99

