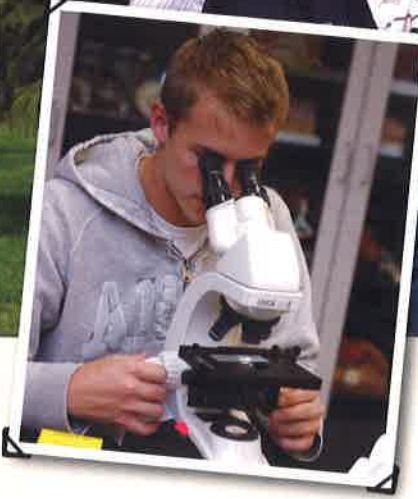




Dawn Morningstar is a junior Mass Communication major from Valparaiso, Indiana

Challenging Academics. Christian Community.



Rochester College announces remodel of academic programming

In one of the boldest moves in RC history, a new academic structure is set to launch this fall

Beginning this fall, Rochester College will start living in an exciting new academic model called a **Christian Integrated Learning Community** or ILC. What is an ILC? It's an approach to education which recognizes that learning happens most effectively when it takes place in small communities, when it focuses on all of life, and when it is offered in creative formats. In other words, an education should not merely be a series of classes strung together on paper for a degree plan. A true education "integrates" classroom experiences with the rest of life. It is a journey that students take together as part of a community. As students live together, study together, eat together, play together, travel together, serve together, and pray together, they do not just obtain knowledge of certain subjects—they gain the experience and wisdom that make knowledge valuable. That is what an Integrated Learning Community is all about. So how do we pull it off? By being *small, old, and incomplete...*

Small is Huge

Rochester College does not apologize for being small. In fact, we believe it is one of our key advantages. By virtue of its small size, Rochester College can offer this kind of integrated experience in an atmosphere that cannot be matched at larger, more expansive institutions. RC boasts impressive academic programs and a highly credentialed faculty, while also offering small classroom size and family-like intimacy. That is the perfect combination for quality academics and personal development.

New Academic Structure

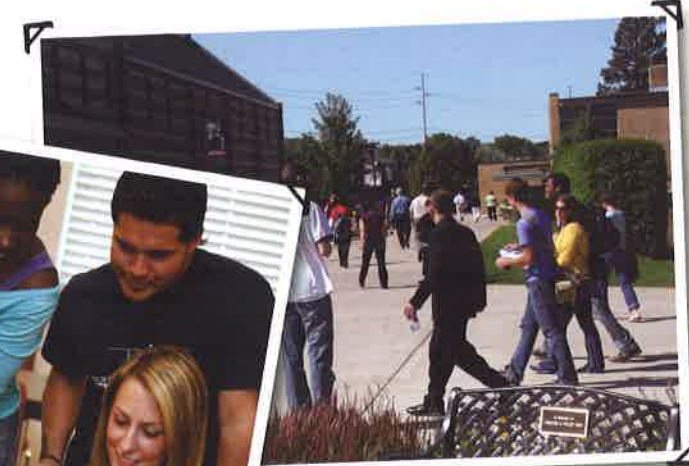
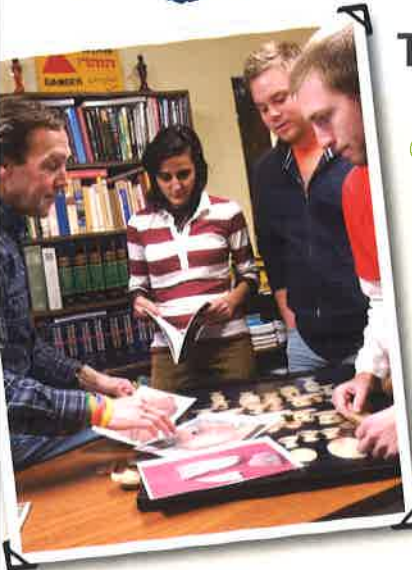
True education is a journey. Come journey with us.

Old is New

By formally embracing an integrated model, RC launches into the future by reviving and updating some classic, even ancient, approaches to learning. Left behind is the common method of doing education in segments where you take a math class here, a history class there, and throw an extra-curricular activity in on the side. The ILC model seeks to educate by integrating all of life into the learning process. Through creative combinations of classes, team teaching, service learning, out-of-classroom experiences, and residential life, RC does education the old-fashioned, yet forward-looking, way. Education is not merely listening to lectures; it is a guided life experience.

The End is Just the Beginning

The kind of education we are describing here does not merely earn a diploma; it will change lives and transform people. It is not something you "finish" after four years of study. It is a set of tools and gifts that you receive to launch into a lifetime of learning, growing and personal development. By virtue of our size, faith environment and innovative integrated model, an education at Rochester College is an invitation to a great adventure.





Bachelor's degree in Health Science APPROVED!

The Academic Cabinet recently approved a new major that falls in line with the emphasis in Health Care which continues to grow in our region. The proposal, submitted by Rochester College's science and mathematics department, adds to the growing package of health care-related offerings. The degree is designed to provide excellent pre-professional program preparation for students interested in going on to pharmacy school or a physical therapy program.

The degree consists of a core of classes that are common requirements to both types of programs. Students electing the B.S. in Health Science will also select a track in either Pre-Pharmacy or Pre-Physical Therapy.

The Science and Mathematics department is excited to offer this degree, since it's sure to draw excellent students into the RC community and will help ensure the department remains vibrant and growing. The department also believes that preparing students interested in providing health care fits the mission of the college beautifully. Dr. David Brackney, chair of the science and mathematics department, notes, "Whether serving as nurses, doctors, pharmacists, physical therapists, or physician assistants, our alumni will be able to carry out the mission of the college in extremely tangible ways through lives of study and service."

Physician Assistant concentration just added

A group of Rochester College pre-med students traveled this spring to the University of Michigan in Ann Arbor to participate in a medical school fair. Over 40 medical schools from around the country were represented. Our students were able to obtain information and begin making good impressions on representatives from the medical schools to which they are interested in applying. Our pre-med concentration, as part of an Interdisciplinary Studies major, is ideally suited to provide not only the necessary science background that future medical students require, but also a strong liberal arts foundation essential to well-rounded individuals—which medical schools seek out for their programs.

Building off of this model, Rochester College recently added to its offerings a pre-physician assistant concentration. While many prerequisites for PA programs are similar to the courses in the pre-med concentration, certain significant differences justified the creation of this new track. The program is tailored to meet the academic requirements of most physician assistant programs and is flexible enough to be tweaked to match the specific requirements of any particular program. We are excited to offer a well-planned track of study to students wishing to enter a PA program.

For more details, contact Dr. David Brackney at 248.218.2116 or dbrackney@rc.edu.

Alumni Excelling

Former students make RC proud in the workplace



Phil Travis, 2007

Campus Minister for the Elmwood Church of Christ at Purdue University

Phil grew up in western Michigan and contemplated ministry work from a young age. After enrolling at Rochester College in 2003, Phil became involved in many of the opportunities offered on campus. Over the course of four years Phil participated in the A Cappella Chorus, Autumn, as a spiritual director of social club TAU, and the campus ministry intern and RA programs. After graduating in 2007, Phil moved to Lafayette, Indiana to work as Campus Minister for the Elmwood Church

of Christ, where he'd previously done a summer internship. "Rochester College not only gave me the education I desired," says Phil, "but also the experience necessary to find a great job in ministry. The relationships I made at RC provide excellent contacts necessary for my work, as well as long-lasting friendships."

Julianna Blankenship, 2006

Marketing and Graphics Specialist for Cornerstone Community Financial

Julianna grew up in Troy, Michigan, not far from the Rochester College campus. In 2006 she graduated with a degree in business communication and went to work as the Assistant Marketing Director of the Village of Rochester Hills, where she remained until taking a job in financial marketing and campaign development for Cornerstone Community Financial in the summer of 2008. This fall, she will begin pursuit of a Master's degree in Integrated Marketing Communication at Eastern Michigan University. Last year, Julianna wrote

and published a children's book featuring characters based on her RC roommates.

The book is called *Sally Lumpkin's Party*, and it's available online at Amazon and Barnes and Noble. "Rochester College offers so much more than just a degree—my education made me adaptable, well-rounded and ambitious," Julianna says.

