

Institutional Research Report

**Medical Transcription
Degree and Credit Hour Trends Reports
for
Curriculum Review Committee**



**OAKLAND
COMMUNITY
COLLEGE**

TABLE OF CONTENTS

Medical Transcription Degree Trends Report

MET Degree Trends Summary

MET Ten-Year Trend

MET Rate of Change

MET Three-Year Moving Mean

College-Wide Ten-Year Trend

Business Information Systems Credit Hour Trends Report

BIS Credit Hour Trends Summary

BIS Ten-Year Trend

BIS Three-Year Moving Mean

BIS Rate of Change

College-Wide Ten-Year Trend

Medical Technology Credit Hour Trends Report

MED Credit Hour Trends Summary

MED Ten-Year Trend

MED Three-Year Moving Mean

MED Rate of Change

College-Wide Ten-Year Trend



OAKLAND
COMMUNITY
COLLEGE

Degree Trends Report
Medical Records Transcription
MET
2004-05

Prepared by:
Oakland Community College
Office of Institutional Research
March 29, 2006

**Oakland Community College
Degree Trends Report
Medical Records Transcription (MET)
1995-96 through 2004-05**

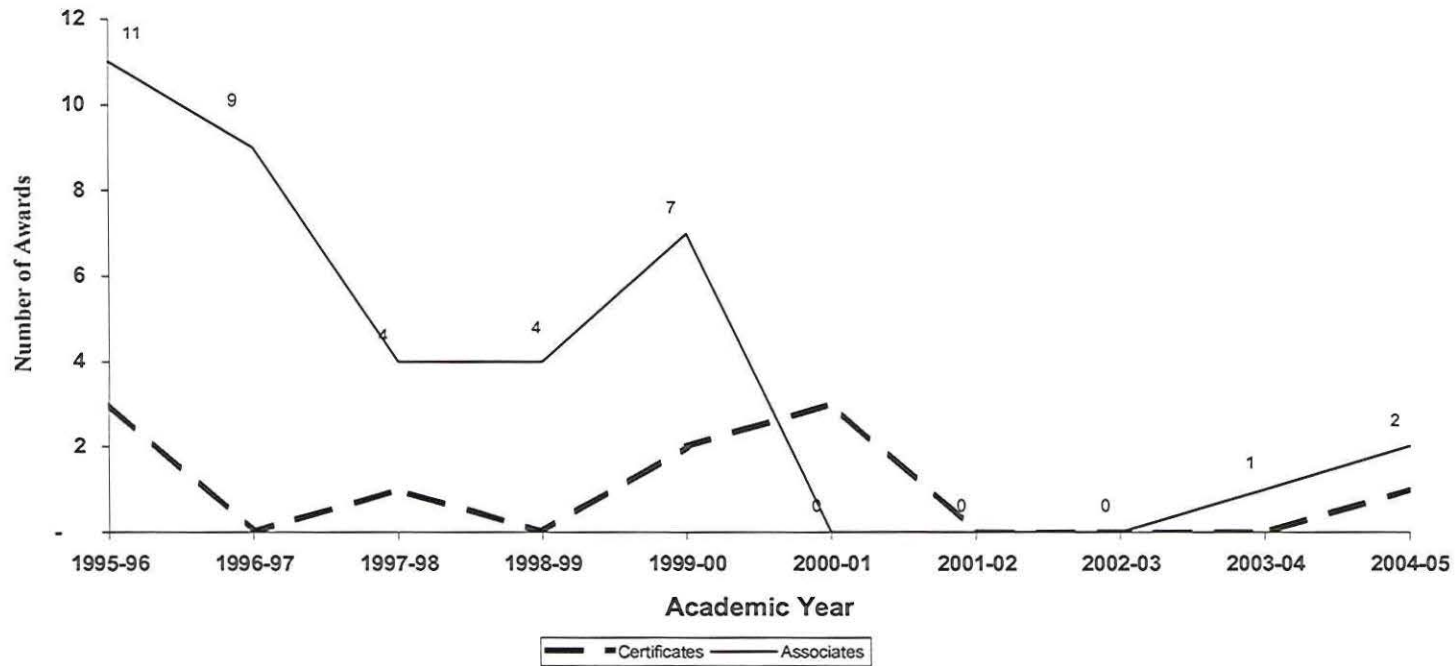
The Degree Trends Report is developed by the Office of Institutional Research based on data compiled from official college records which are submitted to the State of Michigan for the IPEDS (Integrated Post-Secondary Education System) Annual Degrees Conferred Report. The Degree Trends Report examines trends of OCC degrees, based on specific programs. The standard format offers information about certificates and associate degrees awarded. In the event that a given program offers only a certificate or an associate degree, information describing the other type of award will not be shown.

Trends over a specified period of time are illustrated by the following graphs for Medical Records Transcription (MET)

- Ten-year trend showing the annual awards conferred in Medical Records Transcription
- Rate of change in annual awards conferred in Medical Records Transcription
- The three-year Moving Mean for annual awards conferred in Medical Records Transcription
- Ten-year trend in awards conferred collegewide.

Questions regarding this report can be forwarded to the Office of Institutional Research at (248) 341-2123.

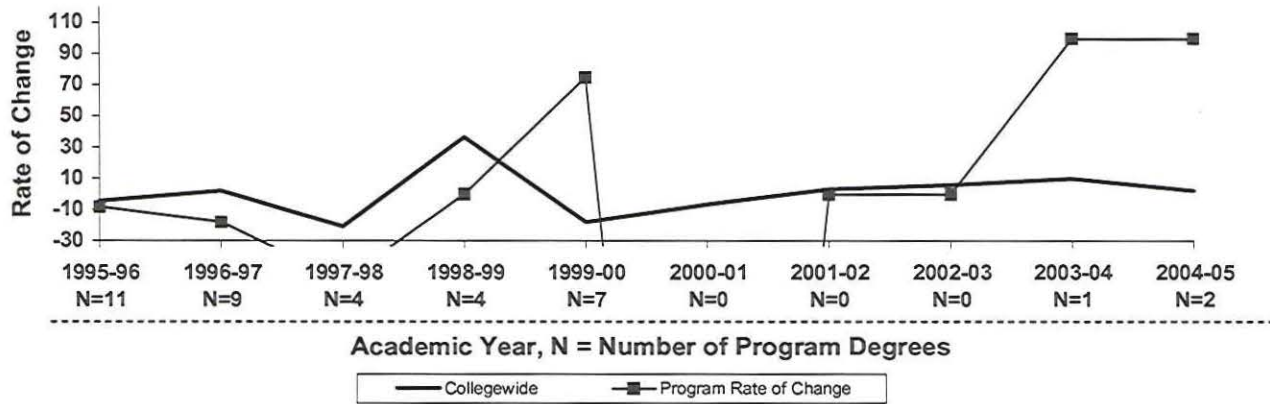
**Oakland Community College
Associate Degrees and Certificates Awarded
Medical Records Transcription
1995-96 through 2004-05**



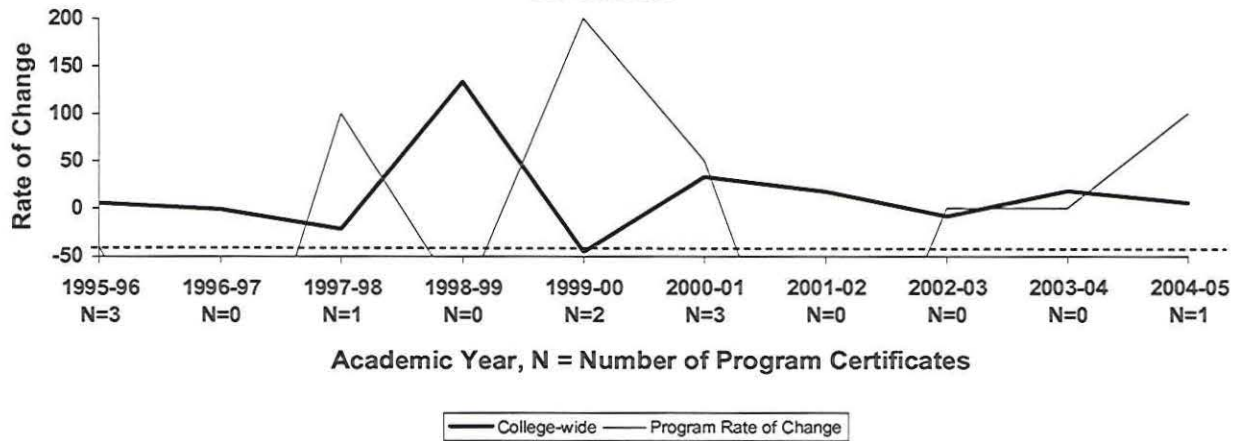
<u>Academic Yr.</u>	<u>Certificates</u>	<u>Associates</u>
1995-96	3	11
1996-97	0	9
1997-98	1	4
1998-99	0	4
1999-00	2	7
2000-01	3	0
2001-02	0	0
2002-03	0	0
2003-04	0	1
2004-05	1	2

**Oakland Community College
Rate of Change in Annual Awards
College-Wide
1995-96 through 2004-05**

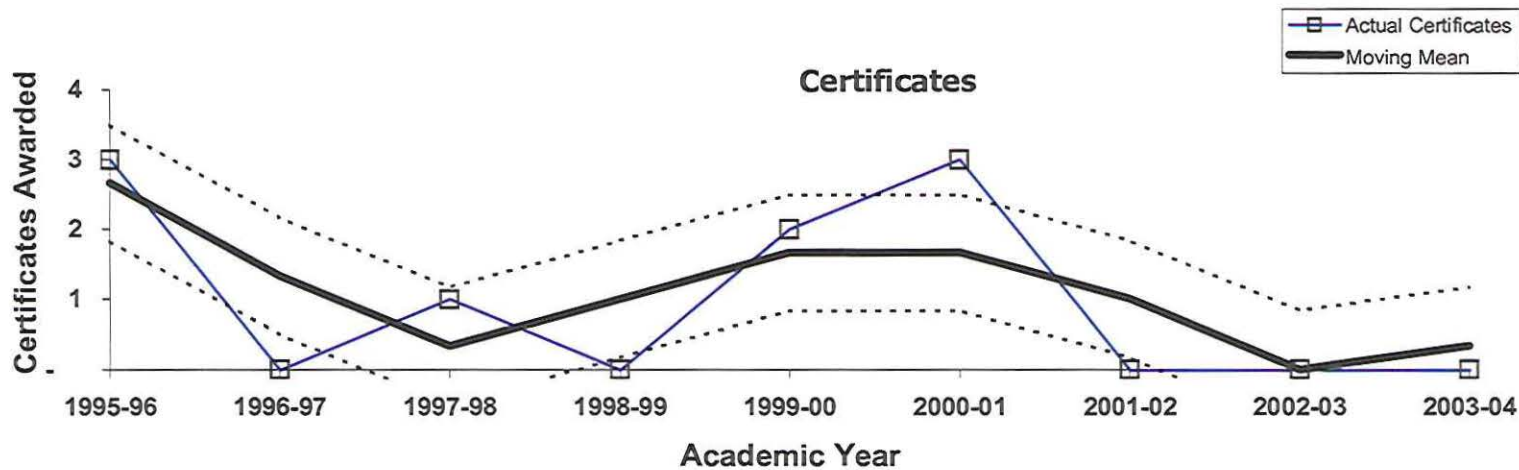
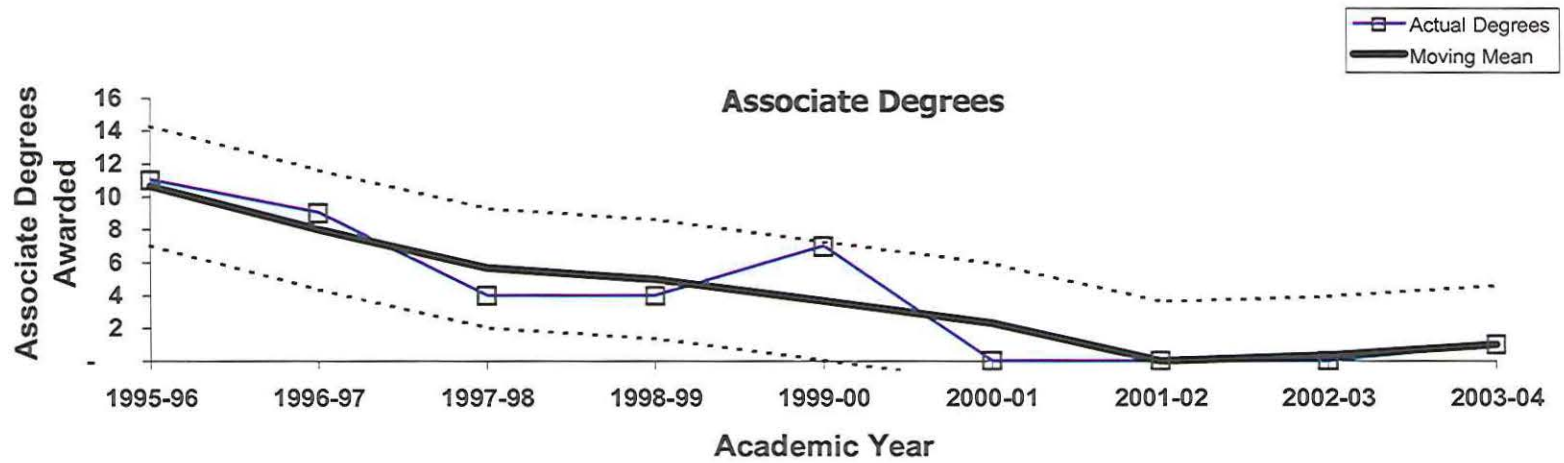
Associate Degrees



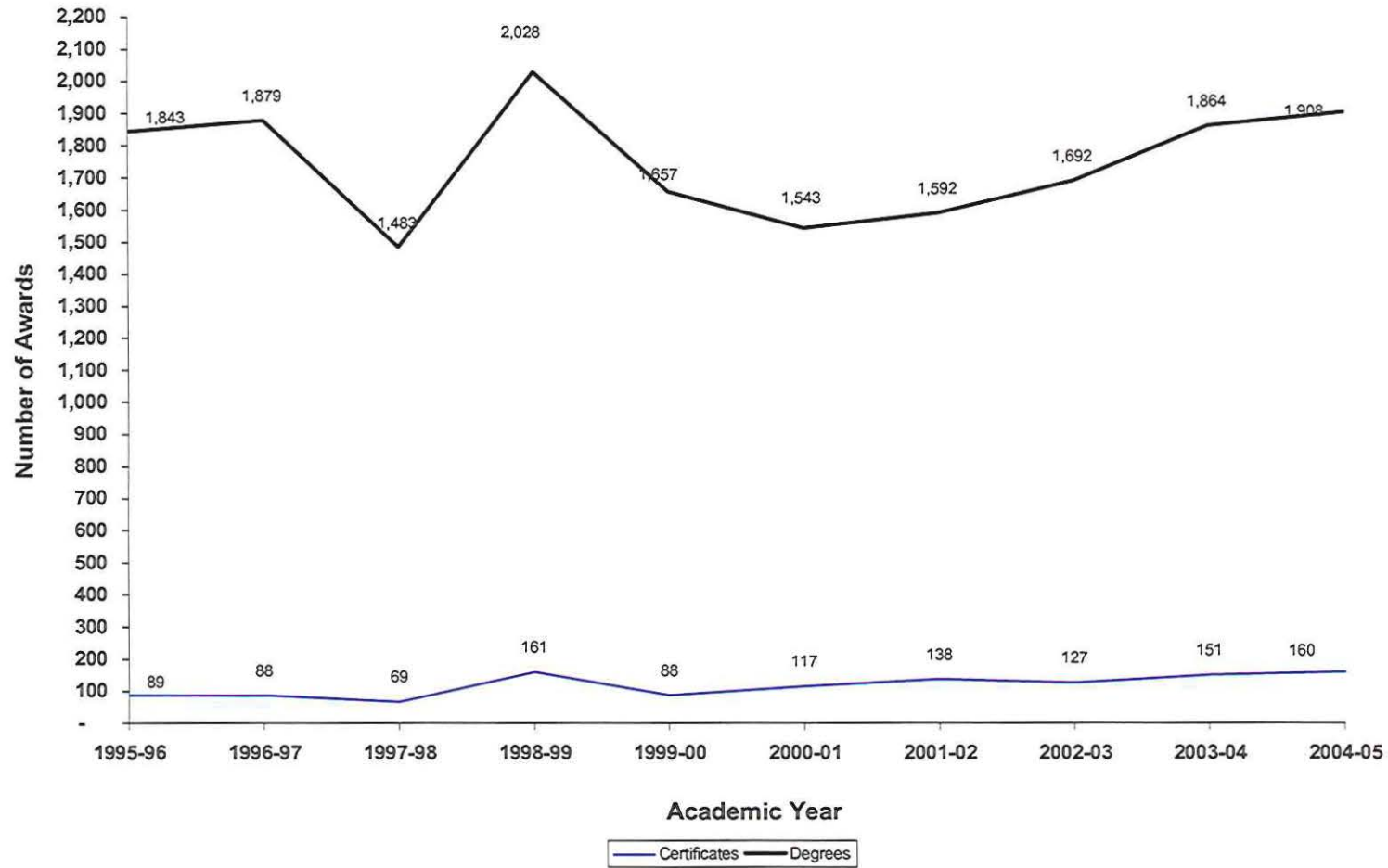
Certificates



**Oakland Community College
Three Year Moving Mean in Annual Awards
Medical Records Transcription
1995-96 through 2003-04**



**Oakland Community College
Associate Degrees and Certificates Awarded
College-Wide
1995-96 through 2004-05**





OAKLAND
COMMUNITY
COLLEGE

Credit Hour Trends Report
Bus Info Sys
BIS
2004-05

Prepared by:
Oakland Community College
Office of Institutional Research
February 16, 2006

**Oakland Community College
Credit Hour Trends Report
Bus Info Sys
1994-95 through 2004-05**

Each year the Office of Institutional Research prepares the Credit Hour Trends Report, based on data submitted to the State of Michigan in the annual ACS-6 (Activities Classification Structure) process. This report is based on each course section's official count date (1/10th Day). The Credit Hour Trends Report examines annual (July 1 - June 30) enrollment trends of OCC disciplines, based on course prefix codes.

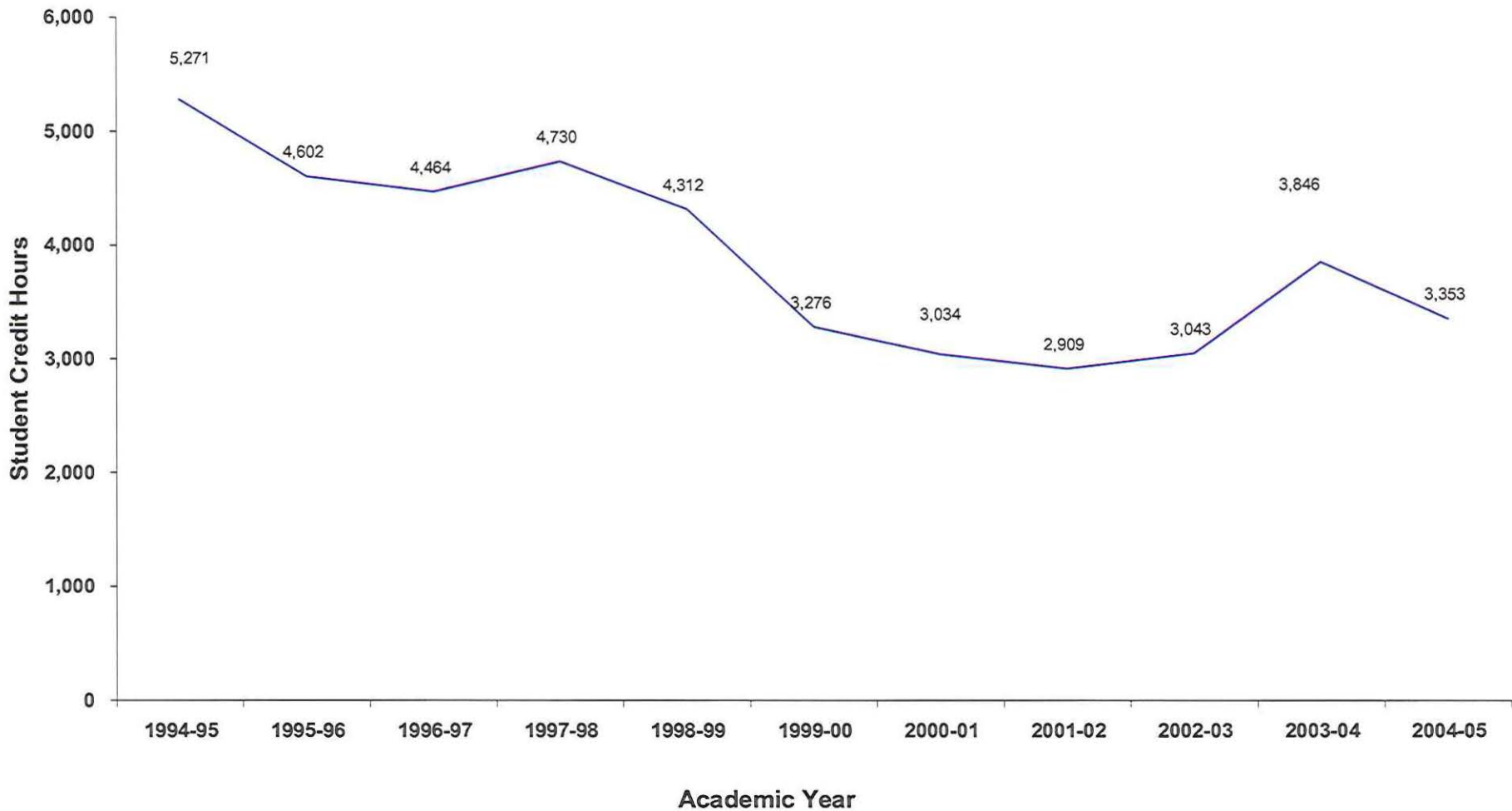
Trends over a specified period of time are illustrated by the following graphs for Bus Info Sys.

- Graph depicting ten-year trend in student credit hours generated by Bus Info Sys
- Graphs depicting three-year moving mean and rate of change in student credit hours for Bus Info Sys.
- Ten-year trend in annual credit hours generated Collegewide.

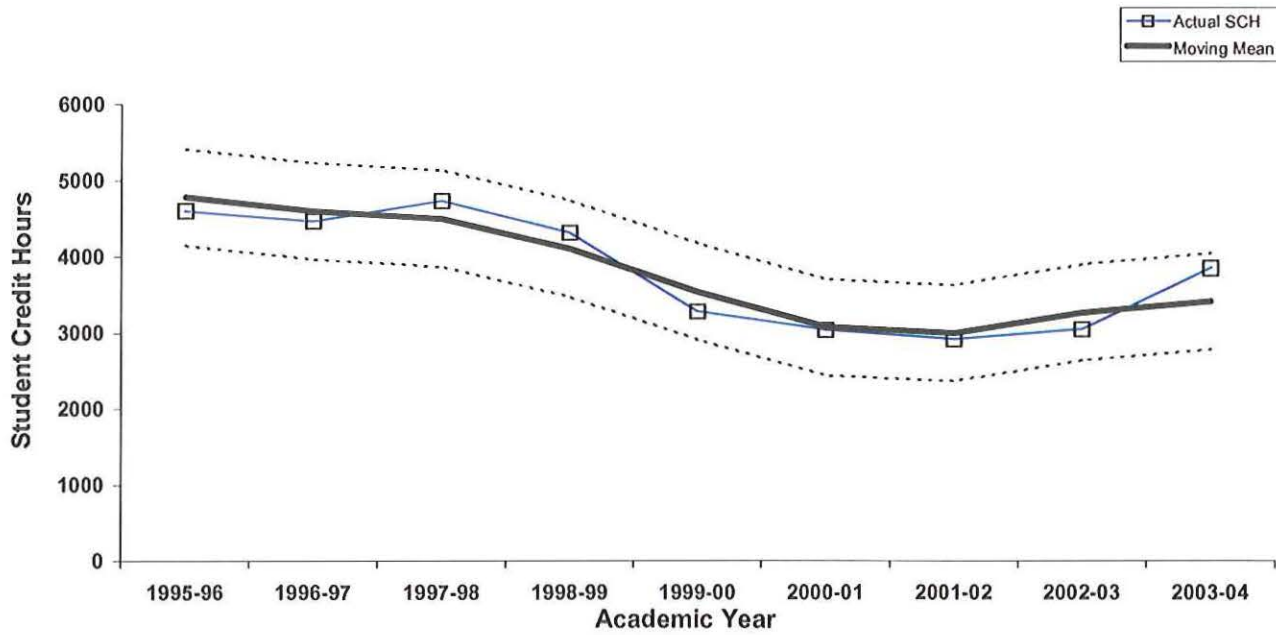
Questions regarding this report can be forwarded to the Office of Institutional Research at (248) 341-2123.

**Oakland Community College
Ten-Year Trend in Student Credit Hours
Bus Info Sys
1994-95 through 2004-05**

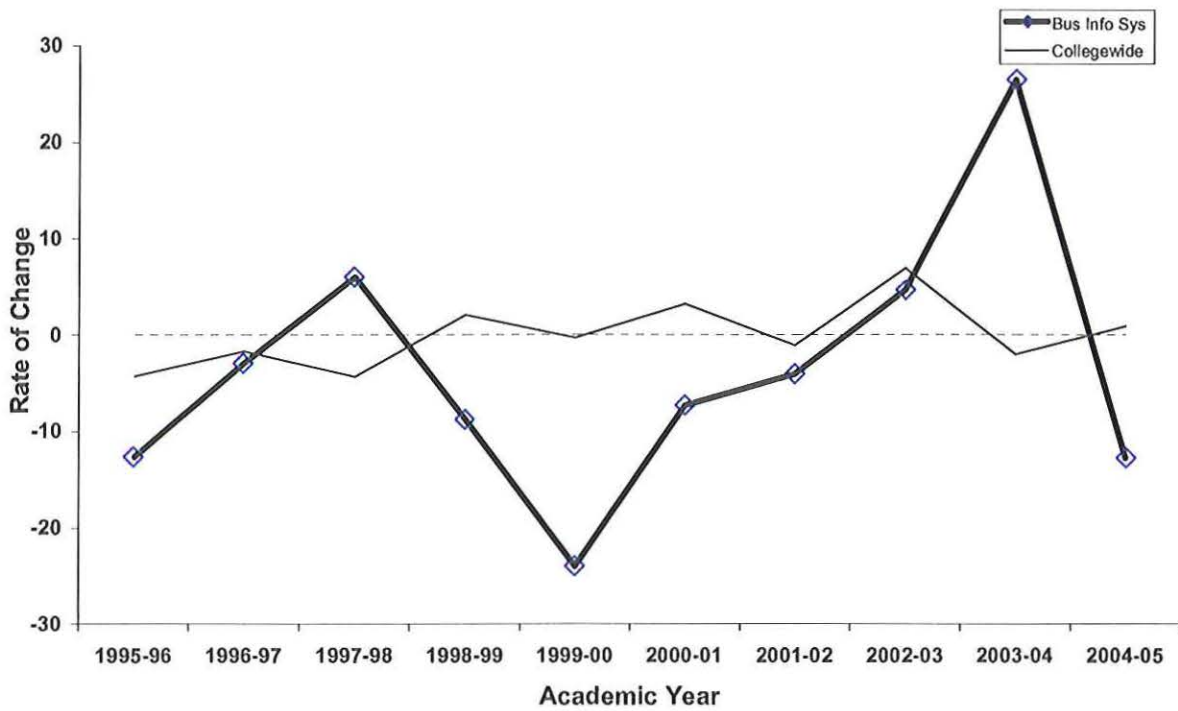
	1994-95 SCH	1995-96 SCH	1996-97 SCH	1997-98 SCH	1998-99 SCH	1999-00 SCH	2000-01 SCH	2001-02 SCH	2002-03 SCH	2003-04 SCH	2004-05 SCH	5-Year % Change	10-Year % Change
Bus Info Sys	5,271	4,602	4,464	4,730	4,312	3,276	3,034	2,909	3,043	3,846	3,353	2.4	-36.4
College Wide Totals	471,593	451,159	443,471	431,521	440,448	438,997	453,054	447,928	478,827	468,777	472,892	7.7	0.3



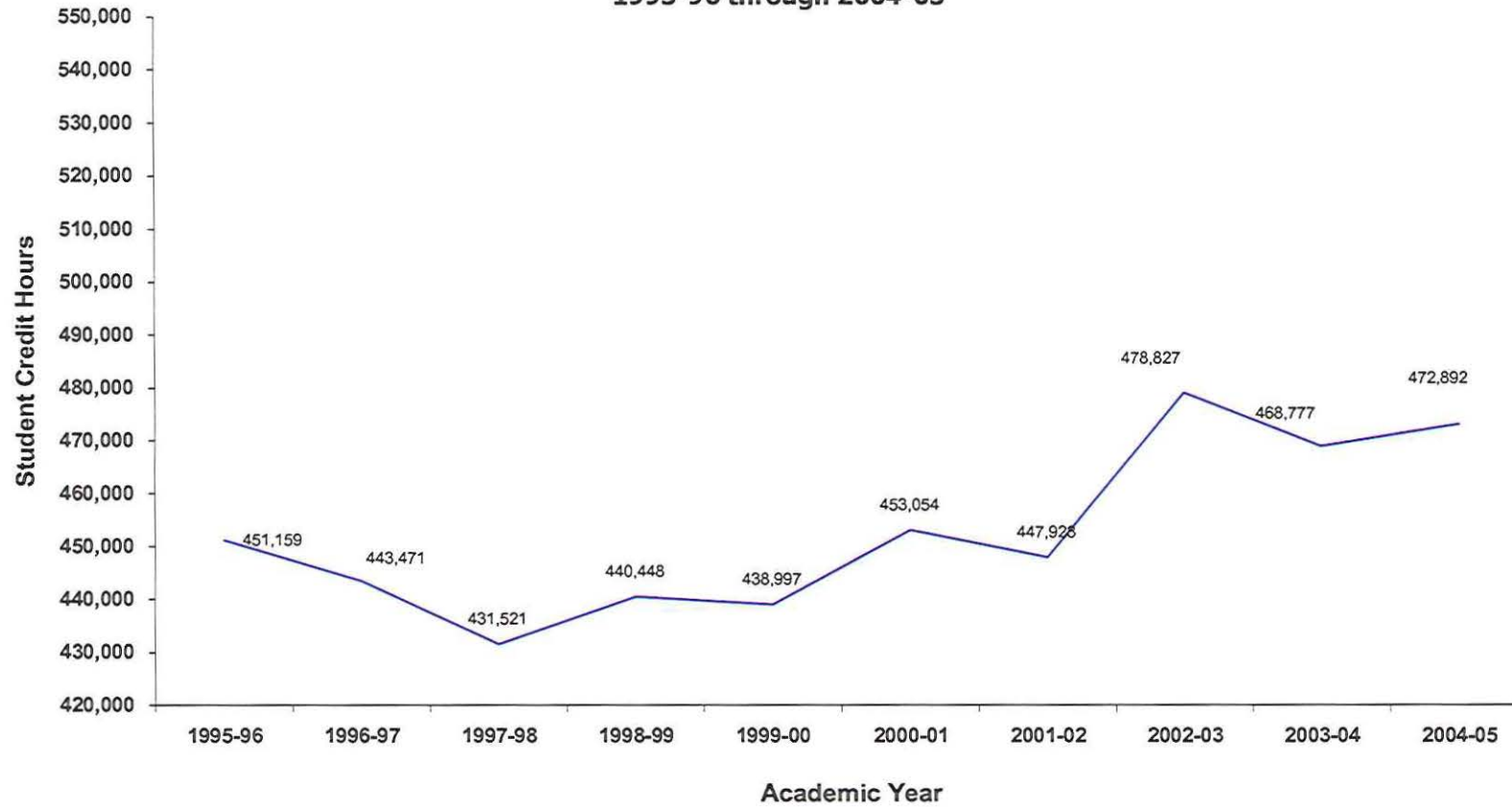
Oakland Community College
 Three-Year Moving Mean
 Bus Info Sys
 1995-96 through 2003-04



Rate of Change in Student Credit Hours 1995-96 through 2004-05



**Oakland Community College
Ten-Year Trend in Student Credit Hours
College-Wide
1995-96 through 2004-05**



1995-96	1996-97	1997-98	1998-99	1999-00	2000-01	2001-02	2002-03	2003-04	2004-05
451,159	443,471	431,521	440,448	438,997	453,054	447,928	478,827	468,777	472,892



OAKLAND
COMMUNITY
COLLEGE

**Credit Hour Trends Report
Medical Technology
MED
2004-05**

**Prepared by:
Oakland Community College
Office of Institutional Research
March 29, 2006**

**Oakland Community College
Credit Hour Trends Report
Medical Technology
1994-95 through 2004-05**

Each year the Office of Institutional Research prepares the Credit Hour Trends Report, based on data submitted to the State of Michigan in the annual ACS-6 (Activities Classification Structure) process. This report is based on each course section's official count date (1/10th Day). The Credit Hour Trends Report examines annual (July 1 - June 30) enrollment trends of OCC disciplines, based on course prefix codes.

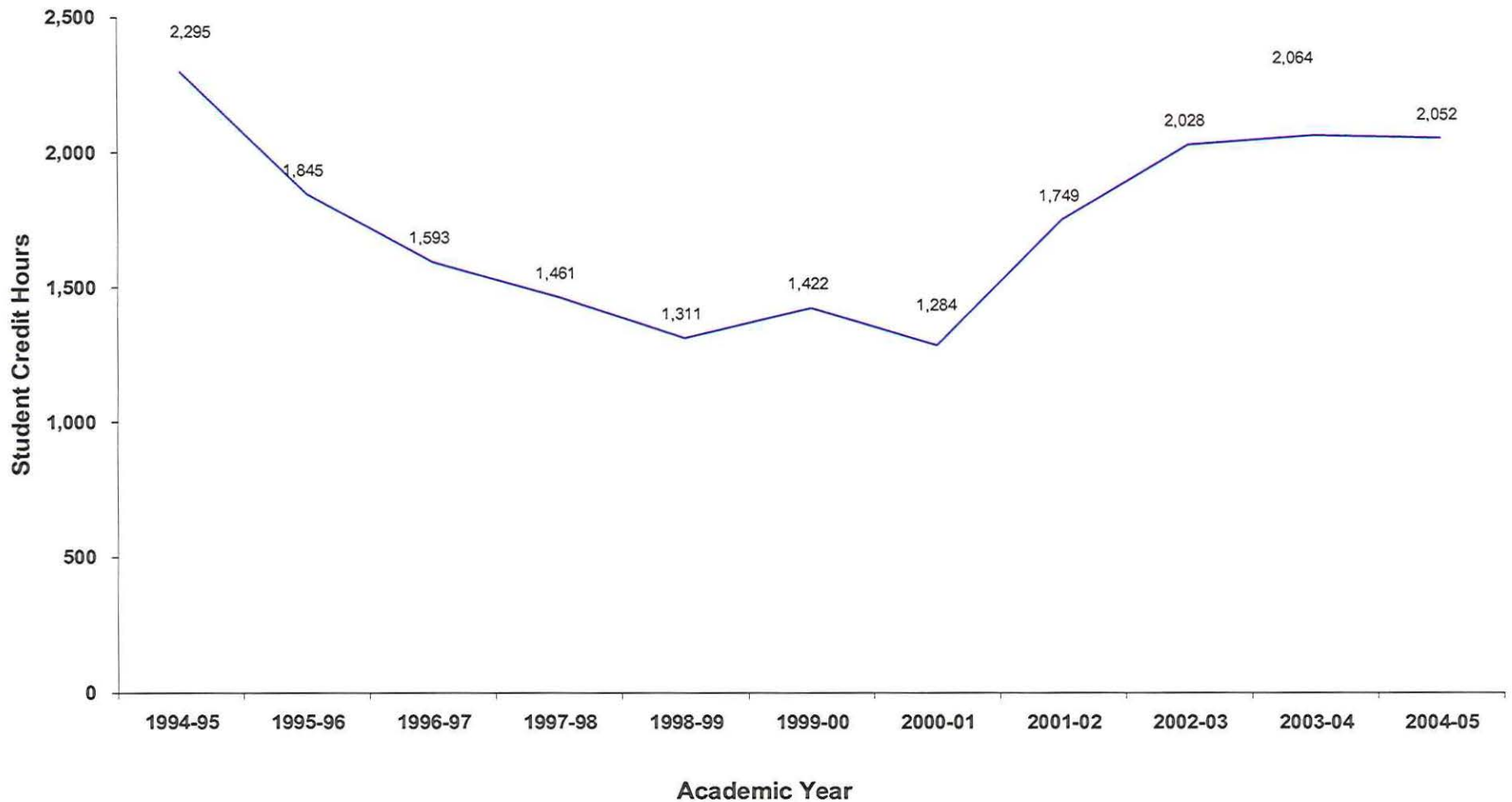
Trends over a specified period of time are illustrated by the following graphs for Medical Technology.

- Graph depicting ten-year trend in student credit hours generated by Medical Technology
- Graphs depicting three-year moving mean and rate of change in student credit hours for Medical Technology.
- Ten-year trend in annual credit hours generated Collegewide.

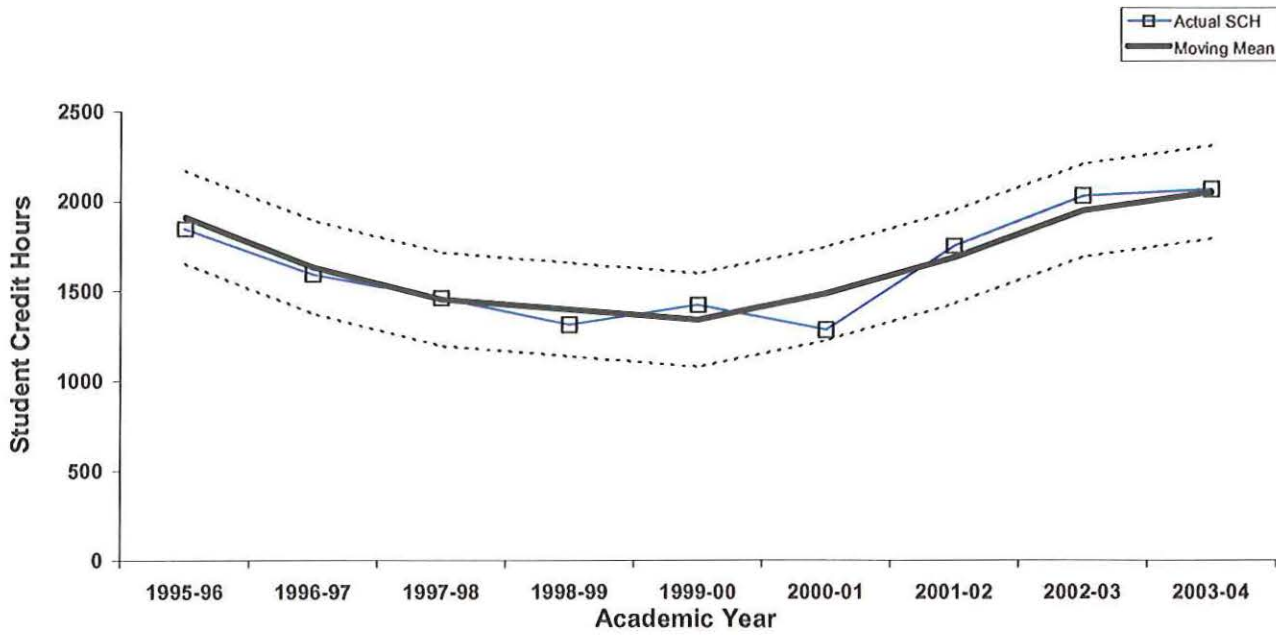
Questions regarding this report can be forwarded to the Office of Institutional Research at (248) 341-2123.

**Oakland Community College
Ten-Year Trend in Student Credit Hours
Medical Technology
1994-95 through 2004-05**

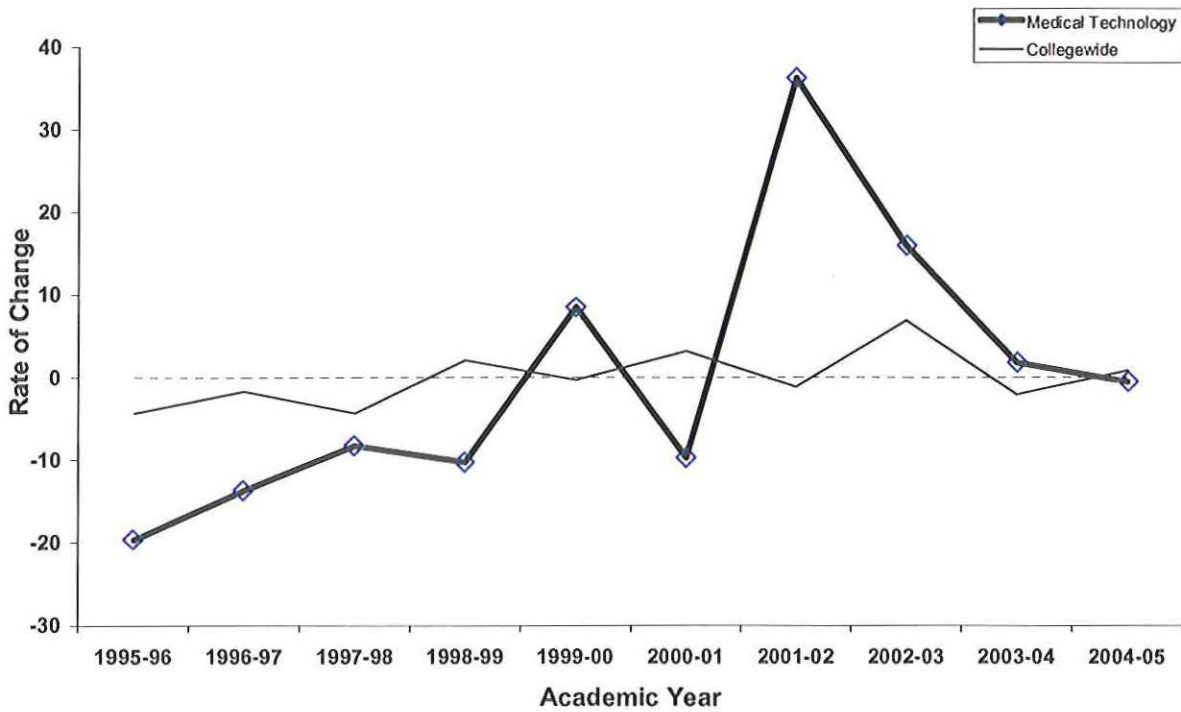
	1994-95 SCH	1995-96 SCH	1996-97 SCH	1997-98 SCH	1998-99 SCH	1999-00 SCH	2000-01 SCH	2001-02 SCH	2002-03 SCH	2003-04 SCH	2004-05 SCH	5-Year % Change	10-Year % Change
Medical Technology	2,295	1,845	1,593	1,461	1,311	1,422	1,284	1,749	2,028	2,064	2,052	44.3	-10.6
College Wide Totals	471,593	451,159	443,471	431,521	440,448	438,997	453,054	447,928	478,827	468,777	472,892	7.7	0.3



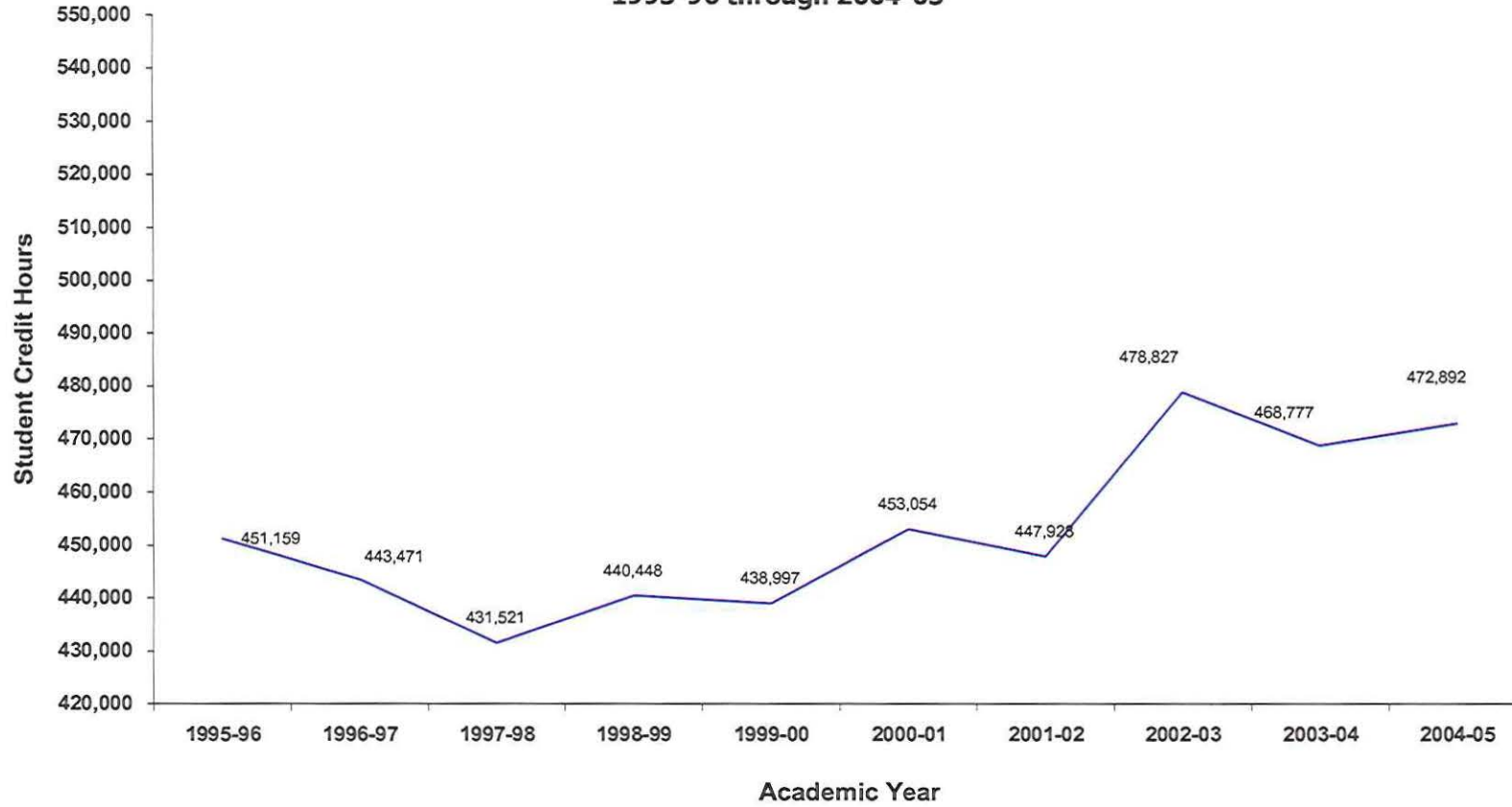
Oakland Community College
 Three-Year Moving Mean
 Medical Technology
 1995-96 through 2003-04



Rate of Change in Student Credit Hours 1995-96 through 2004-05



**Oakland Community College
Ten-Year Trend in Student Credit Hours
College-Wide
1995-96 through 2004-05**



1995-96	1996-97	1997-98	1998-99	1999-00	2000-01	2001-02	2002-03	2003-04	2004-05
451,159	443,471	431,521	440,448	438,997	453,054	447,928	478,827	468,777	472,892